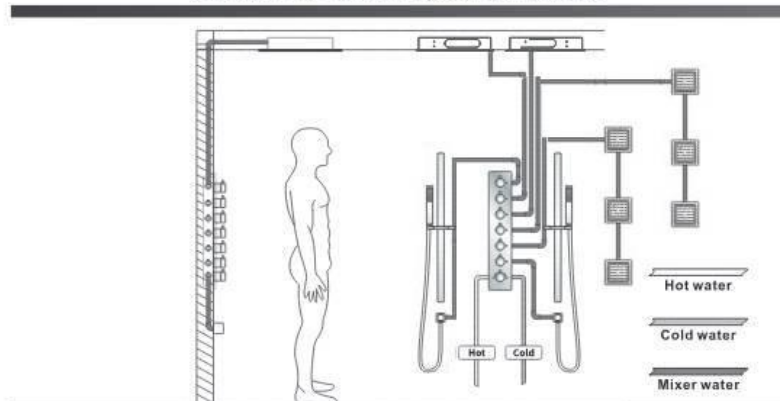
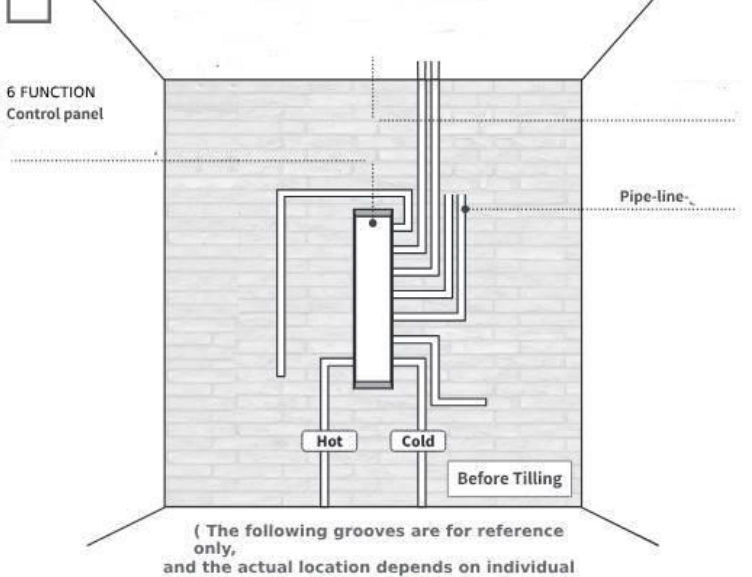


❖ Power / water pipe - layout

Before installation, well plan the pipe groove in the required position for the product

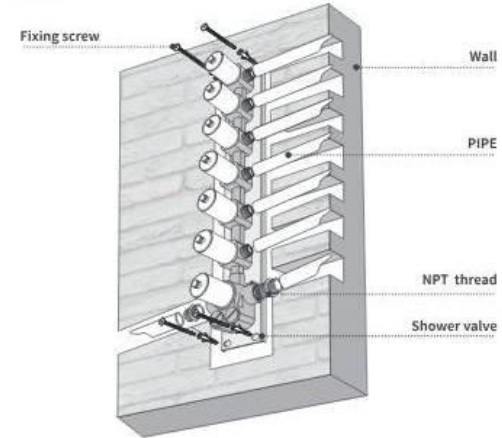
according to the actual installation location of the wall and ceiling.



Schematic diagram of waterway installation

❖ Installation method

9-1 6 Function thermostatic control shower valve



Before Tiling

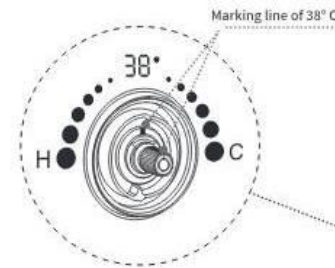
Please grooved and install the shower valve according to the size drawing, the depth of the groove is about 75-110mm



After the installation is complete, turn on the water source and try to see if the water is

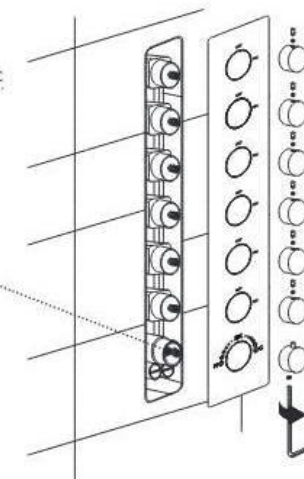
10-1 6 Function thermostatic control shower valve

Install the handles



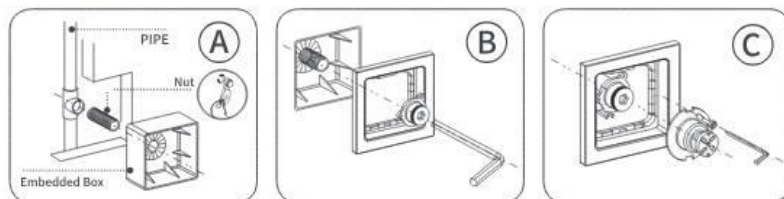
Thermostatic handle installation: Remove the handle and check whether the 38° C line of the thermostatic valve core is aligned as bellow picture. (This is the marking line for testing the water temperature of 38° C.)

After Tiling



Installation method

11 Body jets * 3



Before Tiling

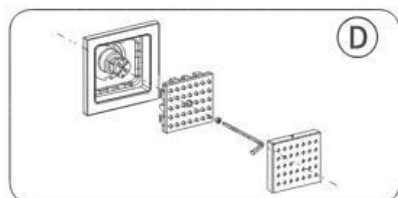
1. Please groove 110*100mm according to the embedded box size.
2. Wrap with the appropriate raw material and connect to the water inlet pipe.
3. Put the embedded box to the groove and fix the crews from back side.

After Tiling

1. Install the cover.
2. Fix the screws by using H10 hexagonal screw.

After Tiling

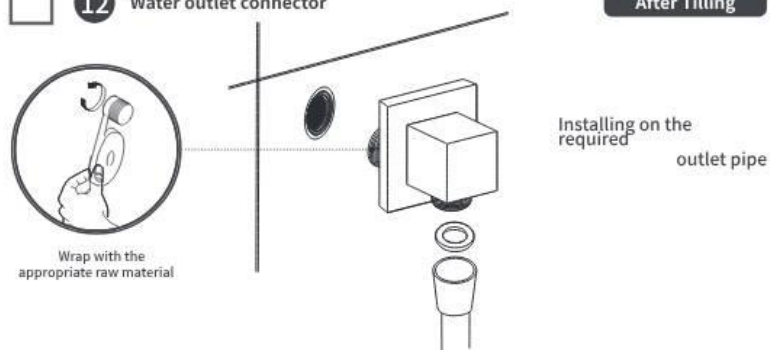
1. Line up the Card slot and the outside double-steel-bars and then push in completely.
2. Using the M4*20 hexagon-socket screw to tighten the component and the connector. Make sure the cover component is not loose.



After Tiling

1. Install the components, make sure the 'components' steel-bars clip into the main body 'component's card slot. Then using the M4*12 hexagon socket screw to tighten them. Pay attention to prevent deformation of the cover when you tighten them.
2. Install the cover.

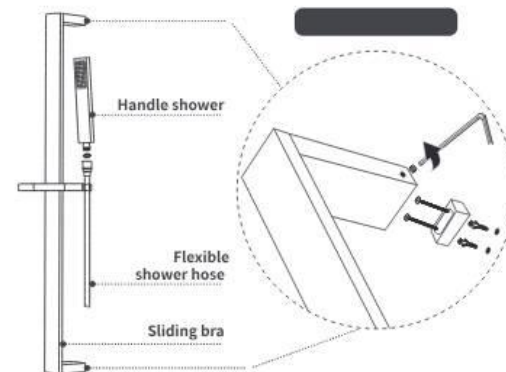
12 Water outlet connector



After Tiling

Installation method

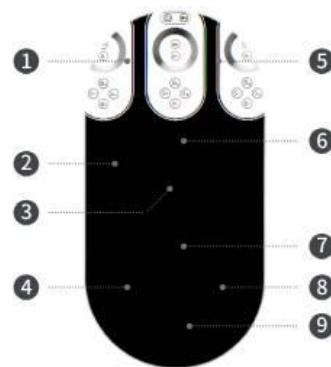
13 Sliding Bra



USER MANUAL

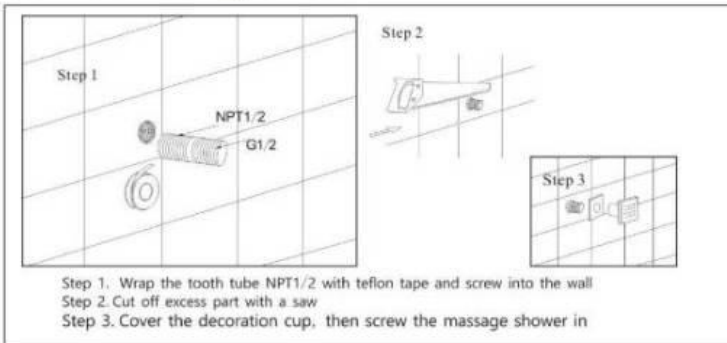
Main parameter:
 Panel controller:
 Working Temp.: -20~60
 Supply Voltage: DC12-24V
 Size: L50*W35*H23mm
 Output: 3Channel
 Output Current: <2A(each channel)
 Connection mode: common anode

Touch Remote:
 Working voltage: 1.5V*3V
 Emission current: 10mA
 Working Current: 300uA
 Standby Current: 3uA
 Standby time: 6 mouths
 Control distance: 20M
 Color pulley point: 60

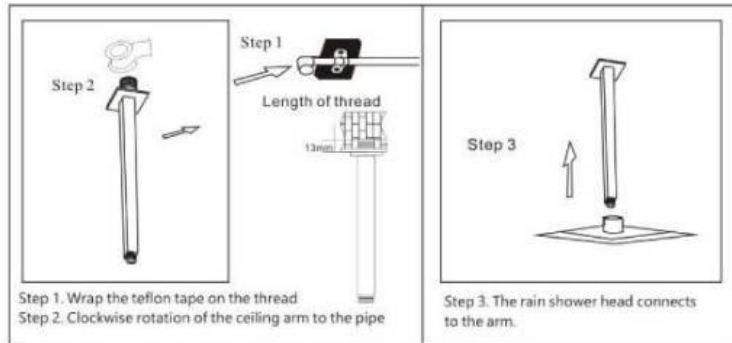


1. Turn ON/OFF
2. Color Touch Ring
- 3/6. Color Temperature adjusting
- 4/8. Dynamic Speed adjusting
5. Mode Switch
- 7/9. Dynamic Brightness adjusting

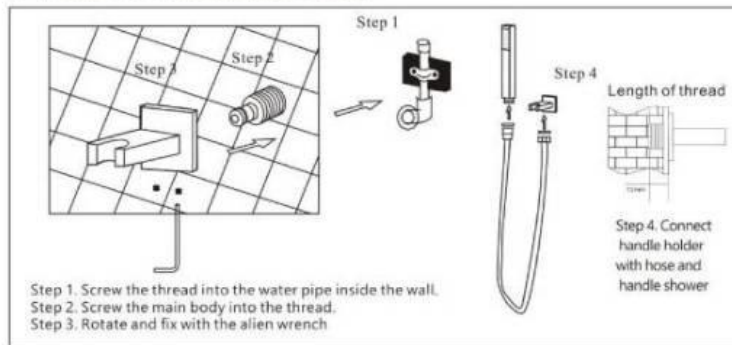
◆ Install the massage shower



◆ Install the rain shower head



◆ Install the handheld shower head



You need to purchase this accessory to install

