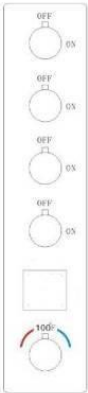
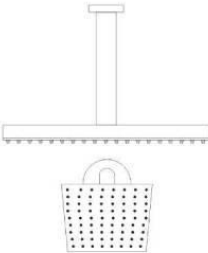


THERMOSTATIC SHOWER MANUAL



Installation Step



Multi-function Thermostatic Concealed Shower

INSTALLATION Tools You Will Need :



Adjustable wrench



Hexagon wrench



Philips Screwdriver



Pipe Tape



Glue

Notes before installation :

1. Please check that all components are available.
2. Before installation ensure that all feed lines are clear of debris and on/off valve is available.
3. Ensure water pressure is between 20-125 PSI (includes combination of hot and cold feed lines).
4. Pictures in the manual are general in content and may not represent exactly your purchased faucet. If you are having difficulties please contact a professional plumber.
5. If you will be away from home for an extended period you should shut off the main water supply.

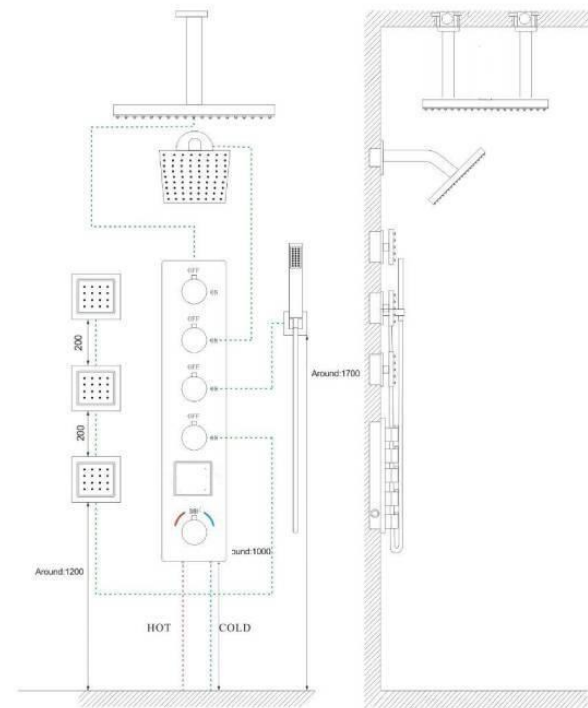
Daily maintenance

1. Use a soft cloth and vinegar to remove hard-water spots.
2. Check aerator (if present) regularly for calcium build up as when water stream is not optimum.
3. DO NOT use caustic cleaning products as the use will break down finish and will void the product warranty.
4. Acceptable cleaners include vinegar or mild non-abrasive liquid detergents.
5. If the water pressure appears to be less than optimum remove, inspect, clean or replace aerator

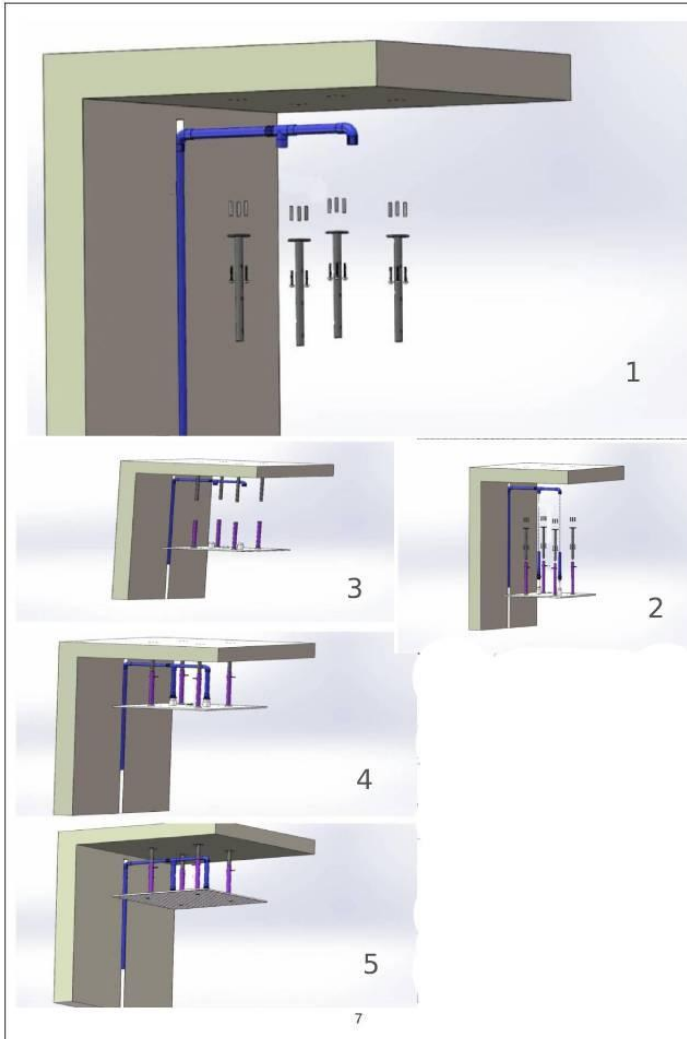
You need to purchase this accessory to install



3/4 inch inlets 4-way thermostatic shower faucet



INSTALLATION 20" OR 24" rain shower head (non-flushed mounted)



Before the Installation

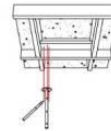
1. Check the package and confirm all parts are included. If any part is missing or damaged, please contact us.
2. Do not disassemble the main body, as it has been installed & commissioned correctly & precisely before leaving the factory.
3. Shut off the main water supply prior to beginning installation.
4. Do flush the water supply lines to remove any dirt and debris before installation (**IMPORTANT**).
5. Make sure to connect the hot/cold inlet pipe correctly. If standing in front, connect hot water pipe to the left and cold water pipe to the right.
6. After the installation, check for leaks and make sure every joint is safely sealed.

Cleaning and Maintenance

1. Rinse with clean water and dry with a soft cloth.
2. Do not use any detergent, acid, polisher, abrasives, or harsh cleaners.
3. Do not use cloth with a coarse surface.

Flushed mounted style

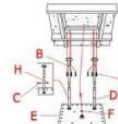
Installation Guide



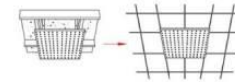
1. Make the fixing positions to ceiling.



2. Drill holes to suit the anchors.



3. Add the screen washer (F). Screw shower hose (G) (not included) to the water inlet on the shower head (A) and then to the water outlet in the ceiling. Install the anchors (A) and fix the mounting bar (B) to ceiling with screws (C). Screw shower bars (D) into the shower head (A) tightly. Attach the shower bar (D) to the mounting bar (B) and fix screws (C) and nut (H) to lock shower bars (D) with mounting bar (B) at the desired height.



4. Finish the ceiling as shown.

8

◆ Installation step — 3/4 inch inlets 4-way thermostatic shower faucet

| | | |
|---|--|---|
| | | |
| <p>1. Confirm the installed place of the pressure balance valve and fixed on the wood block .</p> | <p>2. Connect the hot&cold inlet tube and outlet tube,then make sure the tube fix stable on the wooden wall.</p> | <p>3. Please cut the size of the tile hole according to the size and shape of the protected cover (about 5mm bigger than the protected cover from each side).And please put the tile outside the wooden wall (please noted that we keep the same central point for the tile hole with the protected cover).</p> |
| | | <p>Length of thread</p> |

◆ Install the massage shower

| | | |
|--|--|--|
| | | |
| <p>Step 1. Wrap the tooth tube NPT1/2 with teflon tape and screw into the wall Step 2. Cut off excess part with a saw Step 3. Cover the decoration cup, then screw the massage shower in</p> | | |

◆ Install the rain shower head (12" or 16")

| | | |
|---|--|--|
| | | |
| <p>Step 1. Wrap the teflon tape on the thread Step 2. Clockwise rotation of the ceiling arm to the pipe Step 3. The rain shower head connects to the arm.</p> | | |

◆ Install the handheld shower head

| | |
|--|--|
| | |
| <p>Step 1. Screw the thread into the water pipe inside the wall. Step 2. Screw the main body into the thread. Step 3. Rotate and fix with the alien wrench. Step 4. Connect handle holder with hose and handle shower</p> | |