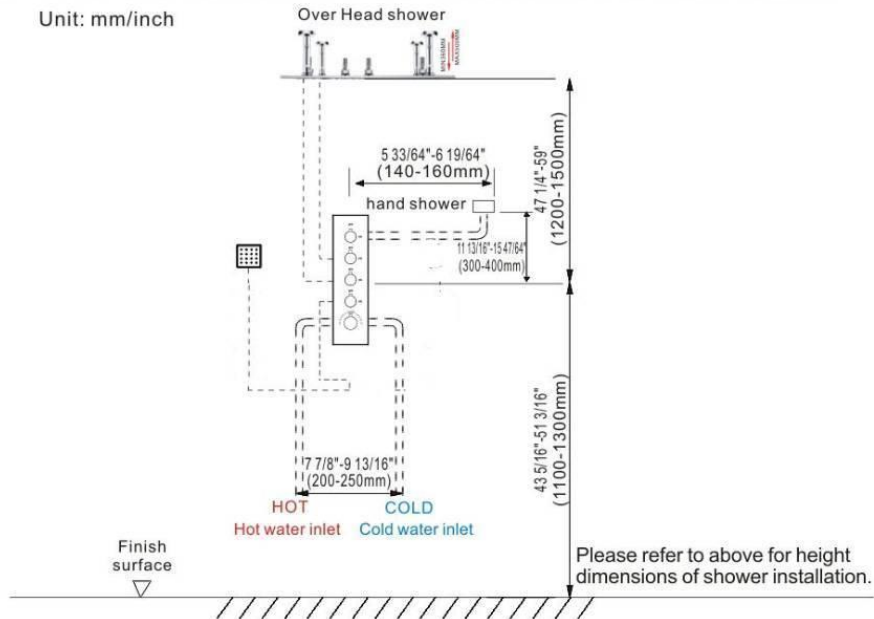


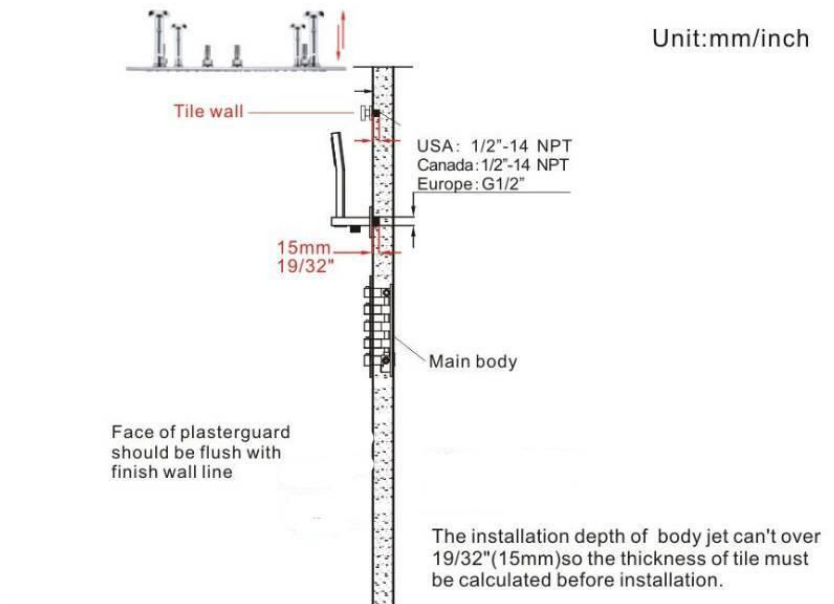
INSTALLATION SHOWER SET SIZE & WATER PIPE LINE REFERENCE

Unit: mm/inch



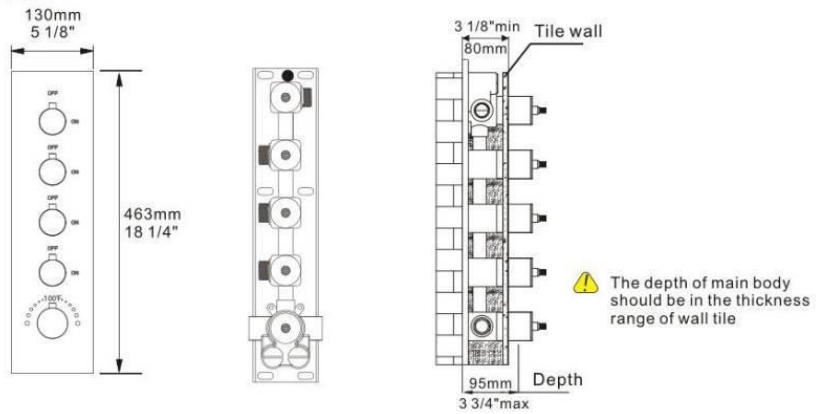
INSTALLATION DEPTH OF SHOWER HOLDER & BODY JET

Unit: mm/inch



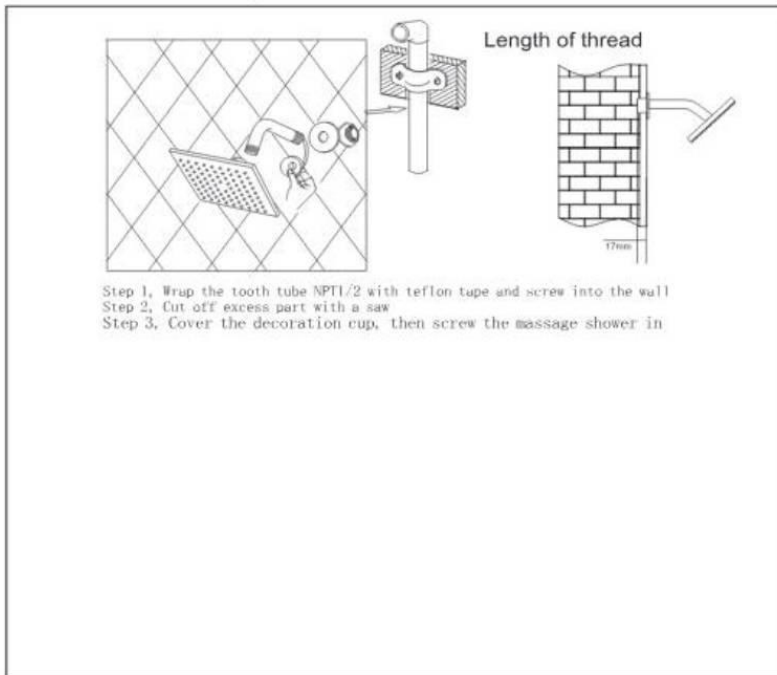
INSTALLATION DEPTH OF MAIN BODY

Unit: mm/inch



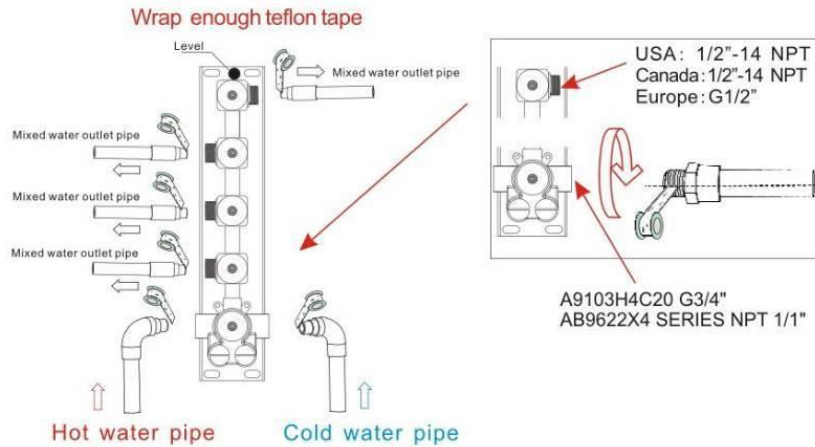
Notice: The thickness of tile must be calculated before installation. The installation depth of main body should be no less than 3 1/8" (80mm) min and no more than 3 3/4" (95mm) max, including the thickness of ceramic tile. Otherwise, the panel cannot be installed.

◆ Install the massage shower



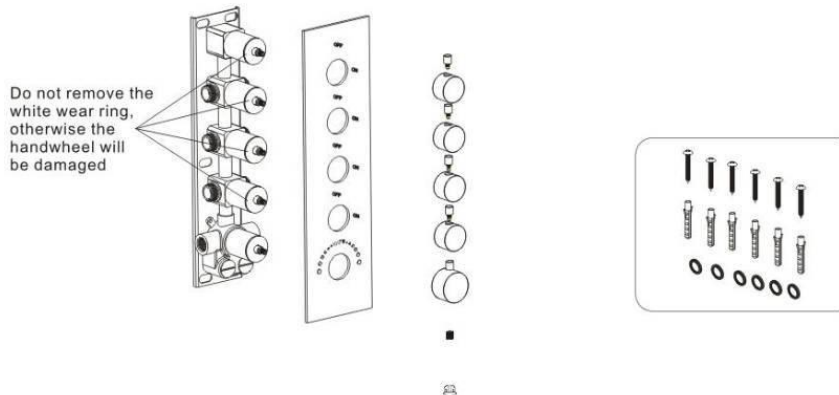
MAIN BODY CONNECTING PIPE SCHEMATIC DIAGRAM

 Warning: must install hot water and cold water inlet strictly as instructions.



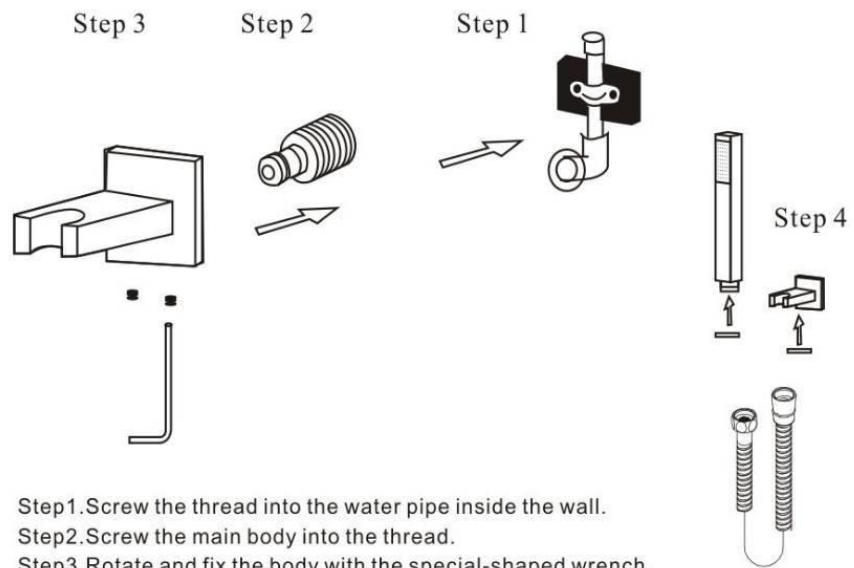
1. As shown in the figure, the inlet and outlet pipes are pre-buried. Please pay attention to the correct direction of installing the pre-buried main body, and make sure that the mark level on the top of the installation box is facing upward.
2. Install the hot and cold water inlet pipes and three mixed water outlet pipes connected to shower head, hand shower holder and body jet pipes separately.
3. Before tiling, turn on the water to test whether the left and right inlet pipes are tightly connected without leakage. Then, adjust the flow switch to be on to check the mixed outlet pipes for leakges.

MAIN BODY VALVE INSTALLATION



Use body box fittings to fix main body on the wall and then install panel, water diverters, water diverter rods and handle step by step.

Install the hand shower holder



- Step1.Screw the thread into the water pipe inside the wall.
Step2.Screw the main body into the thread.
Step3.Rotate and fix the body with the special-shaped wrench.
Step4.Connect hand shower and the hose.

◆ MODEL:A9103H4C20

SHOWER HEAD INSTALLATION

1 Showerhead X 1
 Hose X 2
 Fixed rod X 4
 Flange plate X 4
 Screw X 4
 Setscrew X 12

2 Mixed water
 $1\frac{1}{16}''$ 284mm
 $1\frac{1}{16}''$ 284mm
 X12

3 Mixed water
 $1\frac{1}{16}''$ 284mm
 $1\frac{1}{16}''$ 284mm
 $\phi 8\text{mm}$

4 X 4

5

6

Mark the installation position of the showerhead.

Position drilling.

Sleeve the **4** flange plate into the **3** Fixed rod..

Hammer into the setting screw.

Fix the showerarm as above figure.