

Use And Care Instructions:



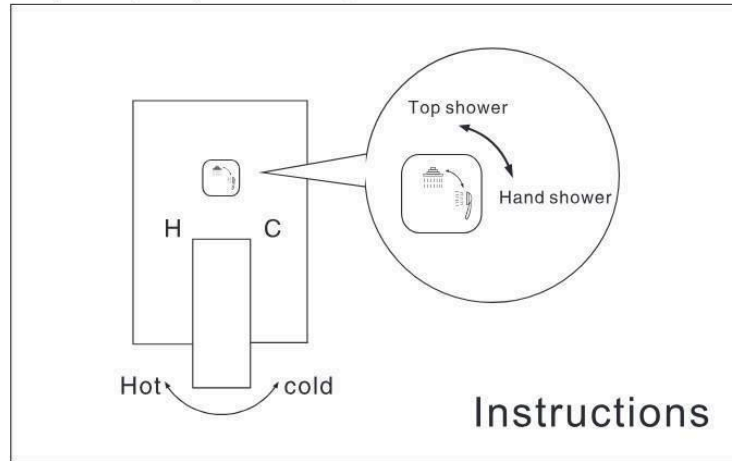
◆ Rain shower/ Handheld Shower Switch

Turn the switch to the "Top shower logo" and it will be the rain shower mode.

Turn the switch to the "Hand shower logo" and it will be handheld shower mode.

◆ Temperature Switch

The Logo "H" stands for Hot Water, "C" Stands for Cold Water, you can manually adjust the temperature by turning the handle to the H/C side



In order to keep your shower system look perfectly, we suggest cleaning the shower system regularly.

Please obey the following procedure when you clean the mixer.

1. Use clear water and the soft cloth to clean the dirt.

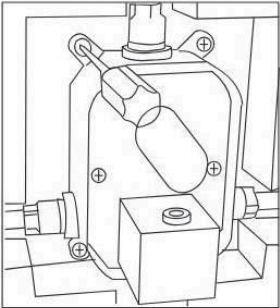
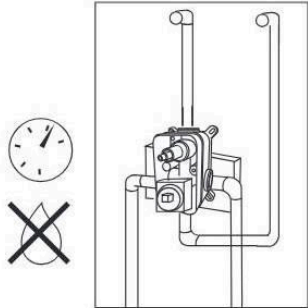
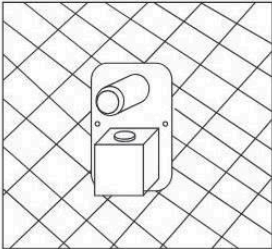
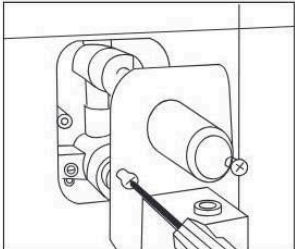
2. Use the any following cleanser to remove the dirt.

- Gentle liquid detergent.
- Colorless cleanser.

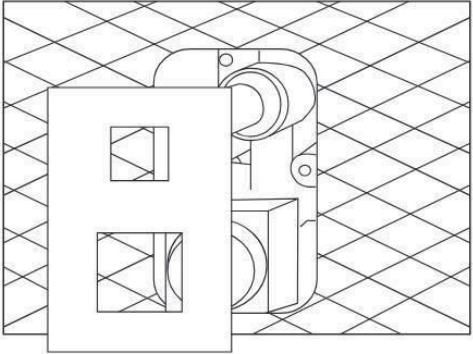
3. Please clean and remove all the cleanser after finish the cleaning, and dry with the soft cotton cloth.

- ◆ Avoid using polishing powder or cleaning powders including coarse particles for cleaning
- ◆ Avoid using acidic detergent for cleaning

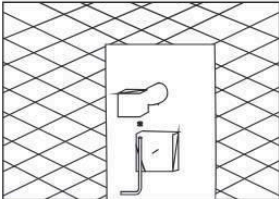
Rain Shower System Instruction Manual

 <p>Step 5: Fix the embedded box on the wall with four screws 15.</p>	 <p>Step 6: Remove the embedded box cover 9 from the valve control, then with the handle help, each inlet and outlet pipe shall be pressure tested to ensure no leakage.</p>
 <p>Step 7: The embedded box cover 9 can protect the box from dust. Cover the embedded box and wait for the wall to be tiled.</p>	 <p>Step 8: After the wall tiled, remove the cover of the embedded box</p>

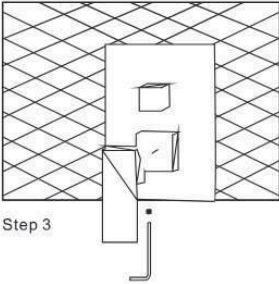
◆ Install the panel



Step 1



Step 2



Step 3

Step1. Cover the panel ⑦ .
Step2. Fix the Rain Mixer Valve Control ② with a hexagonal screw ⑩ and a small cover ⑪ .
Step3. Fix the Single Level Handle ⑫ with a hexagonal screw ⑩ and a small cover ⑪ .

Before Installation:

Thank you for choosing our Rain Shower System. Hope that you'll enjoy a comfortable smooth bathing experience with this product. Before installation, please read this installation manual carefully and keep it properly in case you need it. This manual is about the installation and use of this Rain Shower System.

Technique Requirement

1. Proper Water pressure should be between 0.1Mpa-1.0Mpa, if water supply pressure exceeds 1.0 Mpa, a pressure reducing valve must be fitted.
2. Clean the impurity and sludge in the hose before assembling to avoid leaking and blockage
3. This shower system needs to be installed inside the wall. Please read this manual carefully to confirm the dimensions of products and keep the proper position on the wall.
4. The intake/outlet pipes need to be wrapped with Teflon tape. Use a Teflon tape to wrap a few turns in the clockwise direction on the thread of the pipes. (This is very important. The direction of the Teflon tape must be tangled clockwise. If not, it will leak.)
5. Turn off the water supply before installation

Installation Tools To Be Needed



Adjustable wrench



Hexagon wrench
(included)



Phillips Screwdriver



Pipe Tape



Glue

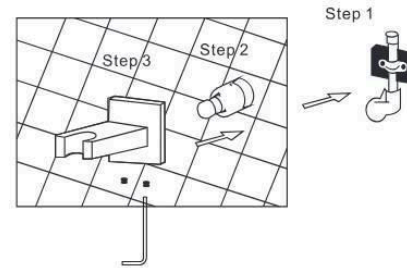


Electric drill

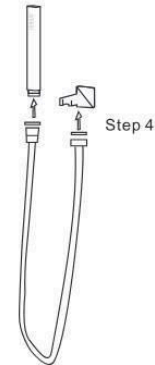
Inventory Accessories

Please check carefully to make sure all the accessories are included in the package, if there is something missing, please contact the seller immediately.

◆ Install The handheld shower Head



- Step 1. Use the Teflon Tape ⑳ to wrap the screw ⑬.
- Step 2. Use the "L" Shape Tool ⑬ to screw the screw ⑬ into the water pipe inside the wall.
- Step 3. Connect the Bracket Holder ⑥ with the screw ⑬. Use the "L" Shape Tool ⑬ to screw two small Hexagonal Screws ⑯ inside the Bracket Holder.

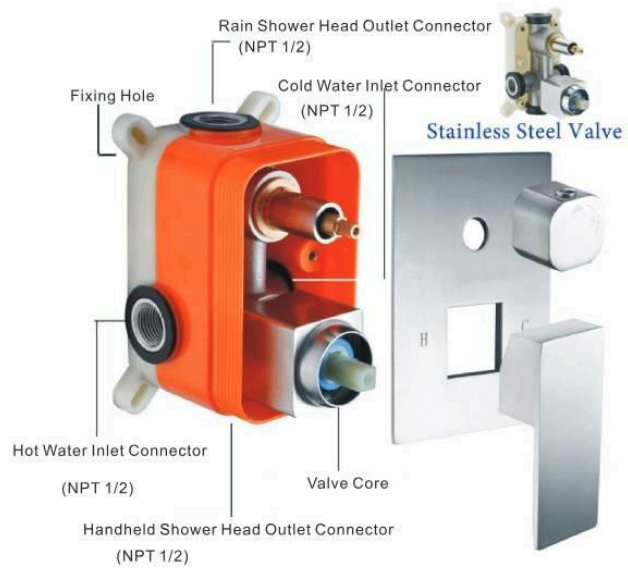


- Step 4. Connect the Handheld Shower Head ③ and Bracket Holder ⑥ with the Hose ④. Make sure the Rubber Gaskets ⑱ inside the Hose.

Installation Of Rain Shower System

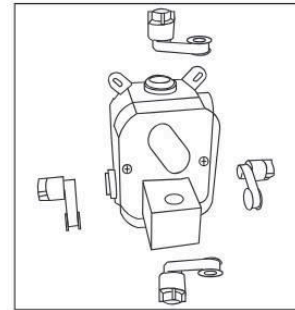
◆ Install The Shower Mixer Valve Control

Make sure the Shower Mixer Valve is connected to the correct Hot/Cold Water side

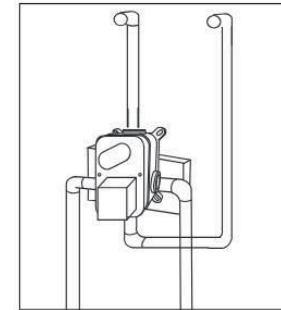


05

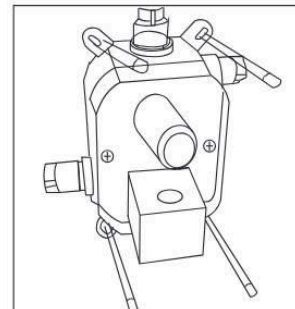
◆ Installation Steps



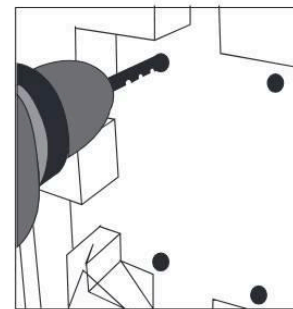
Step 1:
The intake/outlet pipes need to be wrapped with Teflon tape. Use a Teflon tape to wrap a few turns in the clockwise direction on the thread of the pipes.



Step 2:
Connect the water pipe with the embedded box ⑩.



Step 3:
Confirm the location of the embedded box and the pipes. Then mark them.



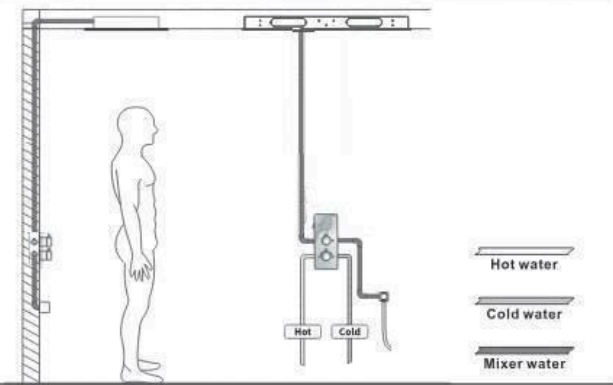
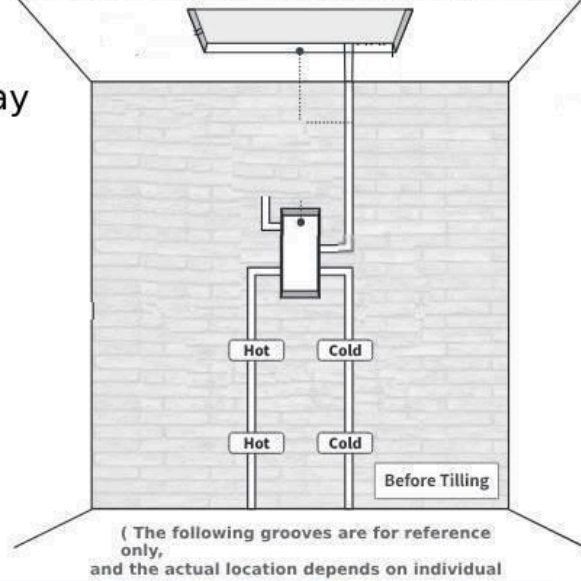
Step 4:
After confirm the location, dig out the routes of the pipes. And remove the embedded box and drill the hole. Then use the electric drill to drill white screws ⑬ into the wall.

06

❖ Power / water pipe - layout

Before installation, well plan the pipe groove in the required position for the product according to the actual installation location of the wall and ceiling.

2 way

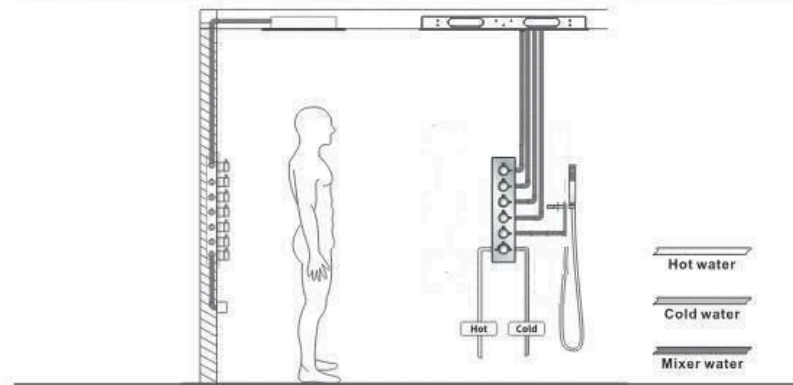
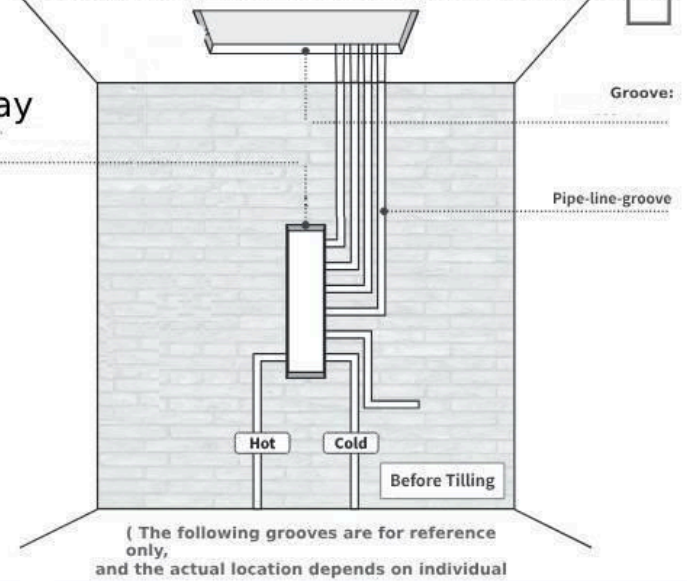


Schematic diagram of waterway installation

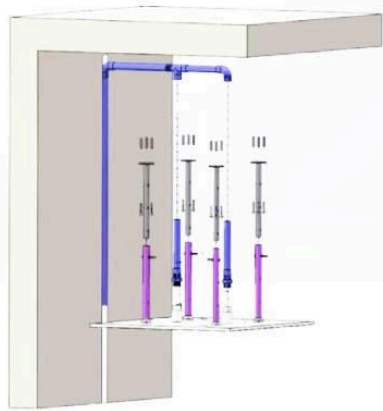
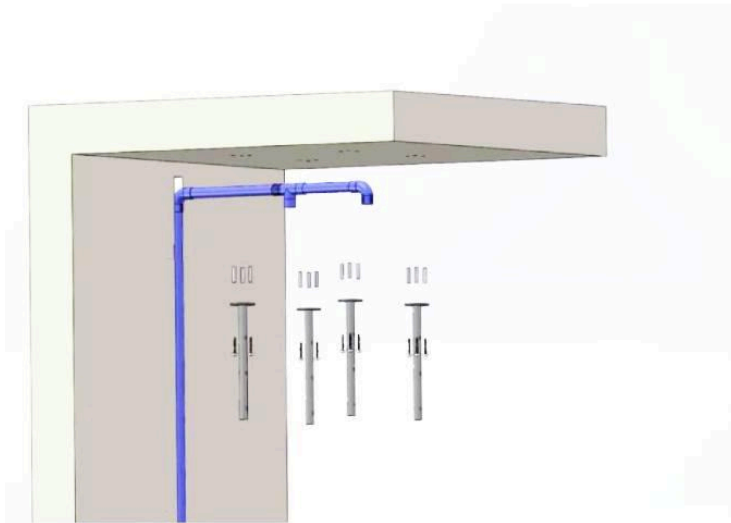
❖ Power / water pipe - layout

Before installation, well plan the pipe groove in the required position for the product according to the actual installation location of the wall and ceiling.

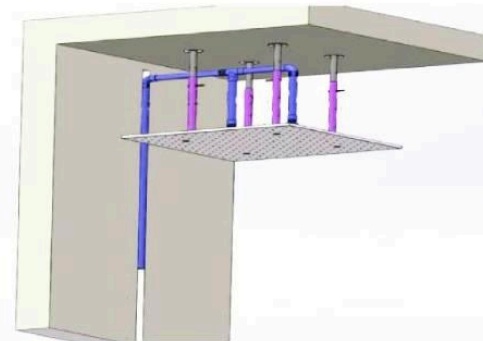
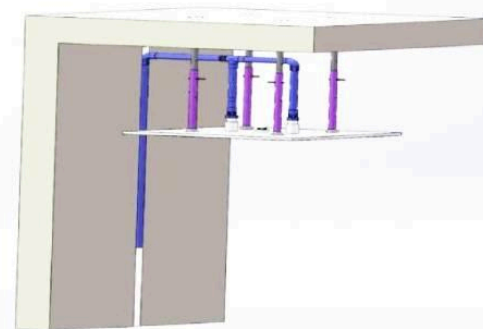
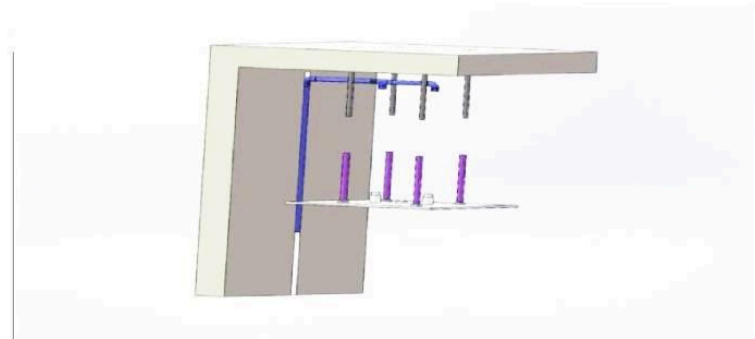
5 way



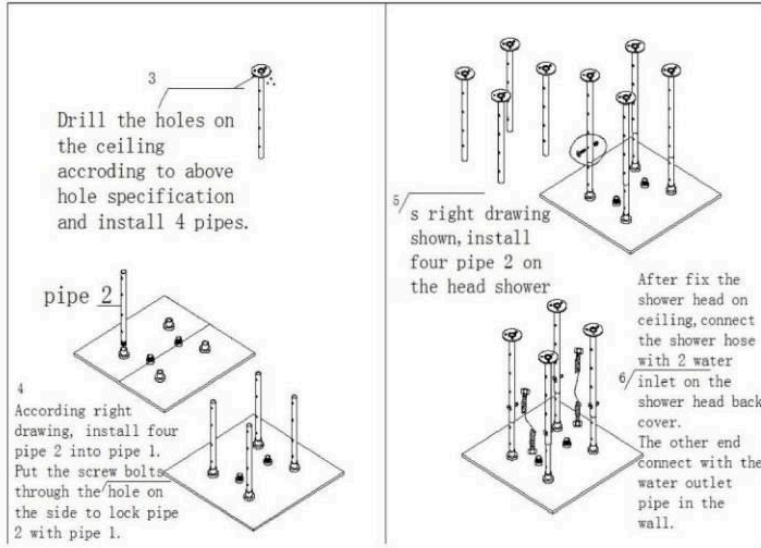
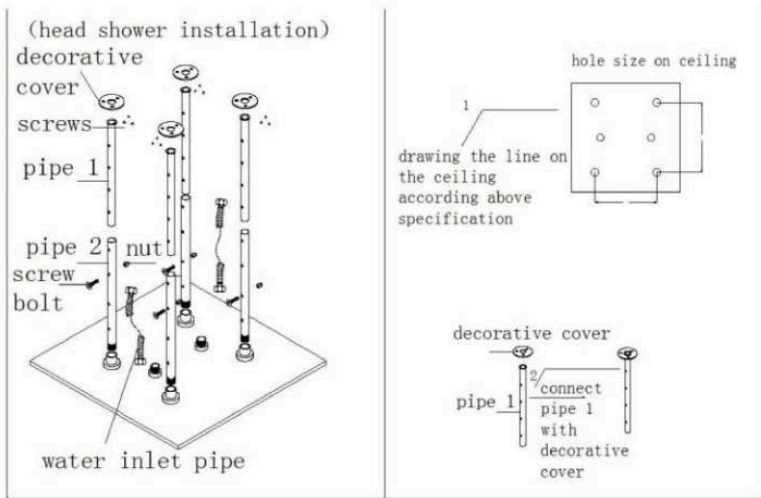
Schematic diagram of waterway installation



03



08



Showerhead Installation

INSTALLATION MANUAL Tools You Will Need:



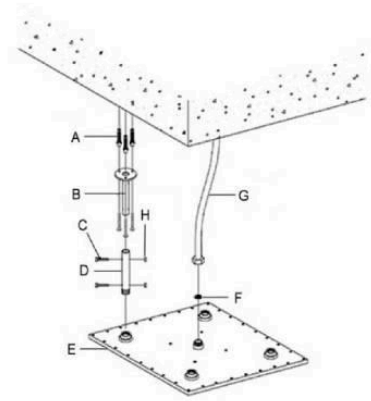
Before the Installation

1. Check the package and confirm all parts are included. If any part is missing or damaged, please contact us.
2. Do not disassemble the main body, as it has been installed & commissioned correctly & precisely before leaving the factory.
3. Shut off the main water supply prior to beginning installation.
4. Do flush the water supply lines to remove any dirt and debris before installation (**IMPORTANT**).
5. Make sure to connect the hot/cold inlet pipe correctly. If standing in front, connect hot water pipe to the left and cold water pipe to the right.
6. After the installation, check for leaks and make sure every joint is safely sealed.

Cleaning and Maintenance

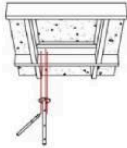
1. Rinse with clean water and dry with a soft cloth.
2. Do not use any detergent, acid, polisher, abrasives, or harsh cleaners.
3. Do not use cloth with a coarse surface.

Parts List

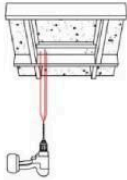


Part	Name	Quantity
A	anchors	16
B	mounting bar	4
C	screws	24
D	shower bar	4
E	shower head	1
F	screen washer	1
G	shower hose	1
H	nut	8

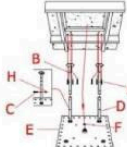
Installation Guide



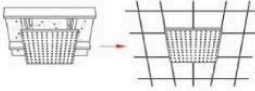
1. Make the fixing positions to ceiling.



2. Drill holes to suit the anchors.



3. Add the screen washer (F). Screw shower hose (G) (not included) to the water inlet on the shower head (E) and then to the water outlet in the ceiling. Install the anchors (A) and fix the mounting bar (B) to ceiling with screws (C). Screw shower bars (D) into the shower head (E) tightly. Attach the shower bar (D) to the mounting bar (B) and fix screws (C) and nut (H) to lock shower bars (D) with mounting bar (B) at the desired height.




4. Finish the ceiling as shown.

Troubleshooting


Problem	Possible Cause	Corrective Action
Water does not shut off completely.	1. O-ring is not seated correctly or worn. 2. Cartridge may be defective.	1. Reseat or replace O-ring. 2. Replace cartridge.
Leaks at waterline connection.	1. Worn or broken washer. 2. Faucet body may be defective.	1. Replace washer. 2. Replace faucet (contact us for the replacement).
Leaks from handle.	1. Cartridge may come loose. 2. Cartridge may be defective.	1. Reseat cartridge tight. 2. Replace cartridge.
Leaks at hose connection.	1. Hose connection is loose.	1. Tighten hose. 2. Replace hose.
Leaks at shower valve connection.	1. Connection may come loose or not sealed completely. 2. Defective shower valve inlet or outlet connector.	1. Check connections. 2. Replace valve body.
Diverter knob does not work.	1. Diverter cartridge may be defective.	1. Replace cartridge.
LED light does not Light or noisy LED showerhead.	1. Defective LED generator.	1. Replace LED spray head (for kitchen faucet). 2. Replace LED threaded pipe (for separate faucet spout). 3. Replace LED generator (for others).
Low flow.	1. Check for water pressure problems. 2. Aerator may be dirty or clogged.	1. Clean or replace the aerator. 2. Remove waterflow restrictor if available. 3. Install booster or pump (if applicable).

Showerhead Installation


INSTALLATION MANUAL Tools You Will Need:



Adjustable Wrench



Hexagon wrench



Phillips Screwdriver

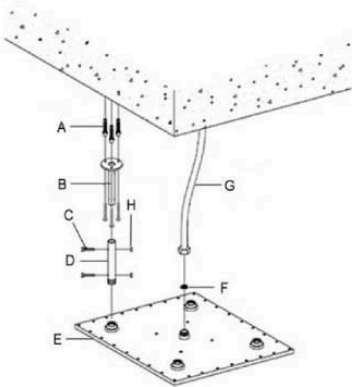
Before the Installation

1. Check the package and confirm all parts are included. If any part is missing or damaged, please contact us.
2. Do not disassemble the main body, as it has been installed & commissioned correctly & precisely before leaving the factory.
3. Shut off the main water supply prior to beginning installation.
4. Do flush the water supply lines to remove any dirt and debris before installation (**IMPORTANT**).
5. Make sure to connect the hot/cold inlet pipe correctly. If standing in front, connect hot water pipe to the left and cold water pipe to the right.
6. After the installation, check for leaks and make sure every joint is safely sealed.

Cleaning and Maintenance

1. Rinse with clean water and dry with a soft cloth.
2. Do not use any detergent, acid, polisher, abrasives, or harsh cleaners.
3. Do not use cloth with a coarse surface.

Parts List



Part	Name	Quantity
A	anchors	16
B	mounting bar	4
C	screws	24
D	shower bar	4
E	shower head	1
F	screen washer	1
G	shower hose	1
H	nut	8