



# Shaker Mask®

## Cherry

POWDER  
MASKS

PROFESSIONAL  
& RETAIL

### The + Benefit

**T**he **SHAKER MASK®** is our range of **instantaneous** and powder masks. In few seconds, thanks to the **cocktail** shaker, the powder and the water unite in a **mixed-flavour** mask of fruits, plants or sweets.

### The + Product

**T**he **Product** Just like a fresh cream, the Creamy surprises by its **fondant** and **unctuous** texture which easily spreads on the skin giving a feeling of **instant softness**. The pale rose powder of natural origin & preservative free is transformed in a magic fuchsia mask when mixed with water.

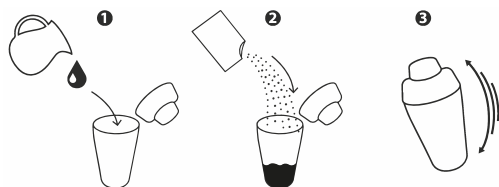


### Properties & Ingredients

Cherry	Concentrated in anti-oxidant phenol compounds such as polyphenols and flavonoids precious to fight the skin aging. In addition, the beta-carotene, a provitamin-A carotenoid helps to protect and revitalized the skin. Ideal to boost and revitalize delicate, tired or mature skins.
--------	--

Please note: *based on natural raw materials, without any pigment, the powder is rich in dry extract; colors changes may be possible from one product to another.*

### Ritual of Beauty



Pour 60mL of water at 20°C in the shaker. Add the 15g powder sachet. Shake **VIGOROUSLY** for few seconds until the mixture is «silent». Immediately apply the paste on the face avoiding the eyes' contour. Leave it for about 10 minutes, then peel it off in one piece.

