



Sensitive mask

Peel-off
Masks

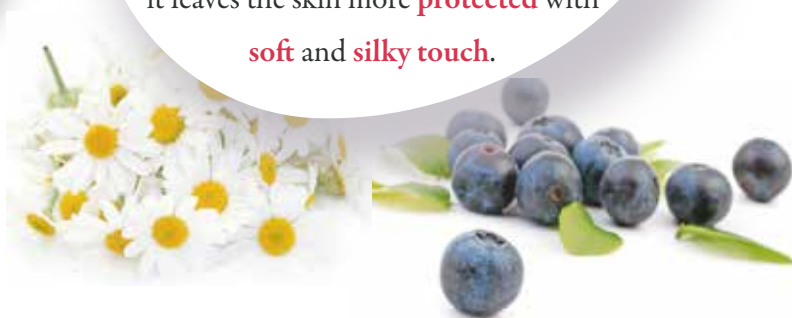
PROFESSIONAL
& RETAIL

The + Innovation

Rich in alginates, this Peel-off mask perfectly fits the contours of the face like a **"second skin"**, facilitating the dissemination of assets; alginate is a natural substance extracted from brown seaweed. This mask has a perfect « skin-hugging » effect and can be easily peeled off in one piece. With its **hypo-allergenic** properties, it is suitable for all types of skins even the most sensitive ones.

The + Product

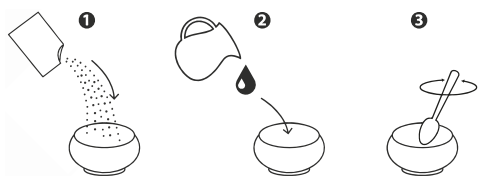
This Peel-off mask is recommended for **very sensitive skins**. Designed with sweet ingredients such as **blueberry** extract combined with azulene, it leaves the skin more **protected** with **soft** and **silky touch**.



Properties & Ingredients

Blueberry	The anthocyanins contained in blueberry extract are known for their stimulating effect on the peripheral circulation. They also reinforce the structure of capillaries.
Azulene	Azulene is an anti-inflammatory and soothing essential oil extracted from chamomile. As agent soothing and softening , azulene has a protective effect and a slightly refreshing .

Ritual of Beauty



Pour 90ml of water at 20°C on the 30g of powder. Stir quickly and vigorously during one minute to get an homogeneous paste.

Immediately apply the paste on the face.

Leave it for at least 15 minutes, then remove it by peeling off in one whole piece.

Use before : 36 months