

— PROTOCOL —

PiNK Plus Prestained Protein Ladder

Catalog Number	Unit Size	Reactions
PM005-0500	500 ul	

- Broad range: 10-175 kDa
 - Ready-to-use: supplied in a loading buffer for direct loading on gels
 - Easy to identify: includes the ~10, ~40 and ~90 kDa reference bands coupled with a blue dye
- Sharp bands

Storage : Stable for up to 2 weeks at 25°C.

Stable for up to 3 months at 4°C.

For long term storage, store at -20°C.

Description

The PiNK Plus Prestained Protein Ladder contains 11 proteins that resolve into sharp, tight bands in the range of 10-175 kDa. The PiNK Plus Prestained Protein Ladder allows you to monitor molecular weight separation during electrophoresis, estimate molecular weights of proteins of interest, and evaluate western transfer efficiency.

Contents

Approximately 0.2~0.4 mg/ml of each protein in the buffer (20 mM Tris-phosphate, pH 7.5 at 25°C), 2 % SDS, 1 mM Dithiothreitol, 4.8 M Urea, and 12 % (v/v) Glycerol).

Applications

- Monitoring of protein migration during SDS-polyacrylamide gel electrophoresis.
- Monitoring of protein transfer onto membranes during Western blotting.
- Sizing of proteins on SDS-polyacrylamide gels and Western blots.

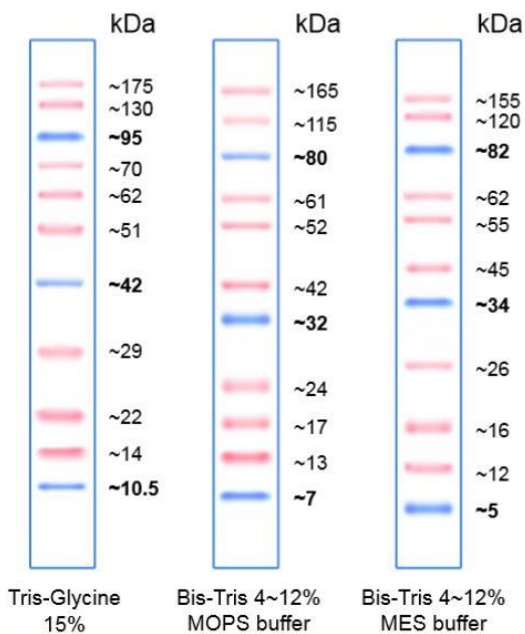
Quality Control

Tested in SDS-polyacrylamide gel electrophoresis and Western blotting

— PROTOCOL —

Recommendations for Loading

1. Thaw the ladder either at room temperature or at 37-40°C for a few minutes to dissolve precipitated solids. Do not boil.
2. Mix thoroughly to ensure the solution is homogeneous.
3. Load the following volumes of the ladder on SDS-polyacrylamide gel:
 - 5 ul per well for mini-gels, 2.5 ul per well for blots
 - 10 ul per well for large gels, 5 ul per well for blots



% of migration	Tris Glycine Gel					4-12% Bis Tris Gel		3-8% Tris Acetate
	8 %	10 %	12 %	15 %	4-20 %	MOPS	MES	TA
0 %			175	175	175			
10 %		175	130	130	130			
20 %	175	130	95	95	95			
30 %	130	95	70	70	70	165	155	160
40 %	95	70	62	62	62	115	120	115
50 %	70	62	51	51	51	80	82	85
60 %	62	51	42	42	42	61	62	65
70 %	51	42	29	29	29	52	45	55
80 %	42	29	22	22	22	42	34	45
90 %	29	22	14	14	14	32	26	40
100 %			10.5	10.5	10.5	24	12	27
						17	5	18
						14		15
						7		