



version 1.0

Innovative Life Sciences Tools

 major
science

2019-2020 BROCHURE

Dry Bath Incubator



Dry Bath Incubator



Mini Cooler, MC-0203

- Molded aluminum alloy chamber with PTFE coating resists stains and water marks
- PID temp. control helps maintain temperature accuracy: no more temperature overshooting
- Safety device: over-heating protection & SSR failure detection (selected model only)
- Outstanding heating rate
- Temperature uniformity at $\pm 0.2^{\circ}\text{C}$
- User temperature calibration available for all units



MD-MINI-LID

MD-MINI-CAR-ADAPTER

Mini Dry Bath, MD-MINI

Cat. No.	MD-MINI
Display	LED
Temperature control range	5°C above ambient to 100°C
Temperature increment	0.1°C
Temperature accuracy	$\pm 0.25^{\circ}\text{C}$ at 37°C
Timer	9999 (min) / Continuous
Dimension (mm)(WxLxH)	153x125x97

FC CE



CE

Cat. No.	MC-0203
Display	LCD
Power	max. 60W
Dimension (mm)(WxLxH)	135x152x185 (excluding lid)
Controller	High performance 32 bits microprocessor
Heating /Cooling chamber	Molded waterproof aluminum alloy coated with PTFE
Temperature control range	30°C below ambient temperature (minimum -10°C) to 100°C
Temperature increment	0.1°C
Temperature calibration	Yes
Heating rate	Max. 5°C per min
Cooling rate	Max. 4°C per min
Programmable	Yes (Quick start, Constant, Programmable, Annealing program)
Timer	9999 (min)
Safety	Leak proof heating chamber
Block type	Standard and customized type are available
PC Connection	USB

Ultimate Dry Bath Incubator, MC-01

Cat. No.	MC-01N
Chamber dimension (mm) (WxLxH)	130x90x50
Display	2.6" LCD
Dimension (mm)(WxLxH)	200x295x140
Temperature control range	30°C below ambient temperature (minimum -10°C) to 100°C
Temperature increment	0.1°C
Temperature accuracy at 37°C	$\pm 0.2^{\circ}\text{C}$
Operation mode	Constant operation: constant temperature (-10°C to 100°C); Timer: 9999 (min)
	Program operation: 1-4 steps and up to 9 cycles; Timer: 9999 (min)
	Annealing program

Elite Dry Bath Incubator, EL series

EL-02



FC CE

EL-01

- External temp probe available for function control.
- data logging software (MD-01N/02N only, optional with RS232)

Cat. No.	EL-01	EL-02	MD-01N	MD-02N
Display	LCD		LED	
Temperature control range	5°C above ambient to 150°C			
Temperature increment	0.1°C			
Temperature accuracy at 37°C	$\pm 0.2^{\circ}\text{C}$			
Timer	99 (hr): 59 (min) / Continuous	999 (min) / Continuous		999 (min) / Continuous
Dimension (mm)(WxLxH)	152x150x135	152x230x135	200x298x88	

MD-01N / EL-01

- Temp. set value: 100°C
- Initial temp. value: 25°C
- Block model: MD-B1.5
- Process time: Approx. 25mins

MD-02N / EL-02

- Temp. set value: 100°C
- Initial temp. value: 30°C
- Block model: MD-B1.5
- Process time: Approx. 31mins

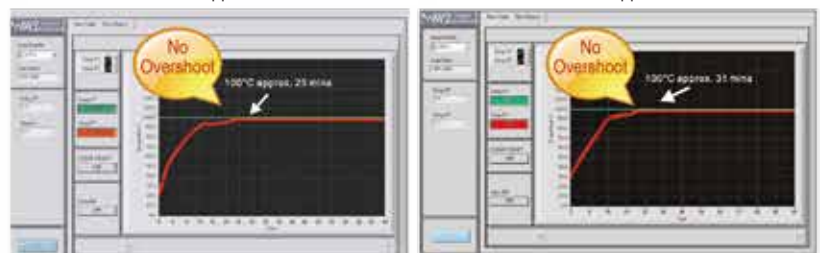
Genius Dry Bath Incubator, MD series



FC CE

MD-01N

MD-02N



*All technical specifications are subject to change without notice.

*Please visit our website at www.majorsci.com for more product selection and detailed information.

Dry Bath Block / Beads

The precisely machined aluminum alloy blocks deliver efficient heat transfer and are suitable for microplate and various test tubes ranging from 0.2ml to 50ml centrifuge tubes.



Mini Dry Bath Block, MD-MINI series



Dry Bath Block, MD series



Ultimate Dry Bath Block, MC series

Dry Bath Block Specifications

*Customized blocks available.

Cat. No.	Mini Dry Bath Blocks	Dry Bath Blocks	Ultimate Dry Bath Blocks
Block material	Aluminum alloy		
Dimension (mm) (WxLxH)	47x71x32 (MD-MINI-B01/02/05/06/07) 47x71x75(MD-MINI-B03/04)	87x128x62.3(MD-MP01-S) 104x158x50 (MD-MP01-D/ MD-MP02-D) 87x128x69.5(MD-MP02-S) 79x104x50(standard blocks)	89x129x46(standard blocks) 64.5x89x46 (MC-B0.2H/0.5H/1.5H) 89x129x30 (MC-BS0.2+0.5/0.5+1.5)

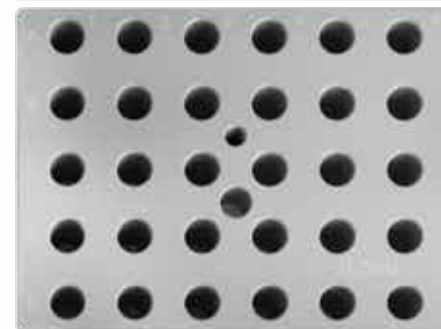
Flow chart for customization process:



Metallic Thermal Beads Specifications

Cat. No.	Metallic Thermal Beads
Properties	Metal composition
	Moisture and gas impermeable
	High thermal conductivity
	Smooth, rounded surface
Working temperature range	-80°C to 180°C
Size	Diameter 5-8mm, Height 1-2mm

Metallic thermal beads as an alternative to the dry bath aluminum blocks. The beads are dry metallic thermal alloy designed to replace water in a water bath and ice in an ice bucket.



Laser marked on the selected blocks

Mini Dry Bath Blocks



MD-MINI-B01	For 0.2ml tube (PCR strip tube), 32 wells, Ø6.35mm, depth 17mm, (WxLxH) 47x71x32mm
MD-MINI-B02	For 1.5ml tube, 12 wells, Ø10.88mm, depth 30mm, (WxLxH) 47x71x32mm
MD-MINI-B03	For 15ml tube, 6 wells, Ø17.3mm, depth 70mm, (WxLxH) 47x71x75mm
MD-MINI-B04	For 50ml tube, 2 wells, Ø29.0mm, depth 70mm, (WxLxH) 47x71x75mm
MD-MINI-B05	For 0.5ml tube, 12 wells, Ø7.9mm, depth 25mm, (WxLxH) 47x71x32mm
MD-MINI-B06	For 2.0ml or 1.5ml tube, 12 wells, Ø11.0mm, depth 30mm, (WxLxH) 47x71x32mm
MD-MINI-B07	For 2.0ml or 1.5ml tube, 12 wells, Ø11.0mm, depth 30mm, (WxLxH) 47x71x32mm
MS-BL95-E	Block Lifter, 95mm length with E-type retaining rings



MS-BL95-E

Dry Bath Blocks



MD-MP01-S	For microplate; titerplate (Plain Block for Single Block unit only)	MD-B0.5/1.5	One side for 1.5 or 2.0ml tube, 20 wells and another side for 0.5ml tube, 30 wells (on the opposite side)
MD-MP01-D	For microplate; titerplate (Dual Block unit only)	MD-B13	Well size 13mm, 20 wells
MD-MP02-S	For 96 wells deep microplate or PCR plate (for Single Block unit only)	MD-B17	For 15ml centrifuge tube, 12 wells
MD-MP02-D	For 96 wells deep microplate or PCR plate (for Dual Block unit only)	MD-B20	Well size 20mm, 12 wells
MD-B0.2	For 0.2ml tube, 64 wells (or 0.2ml PCR strip tube for 8 wells x 8)	MD-B25	Well size 25mm, 6 wells
MD-B0.5	For 0.5ml tube, 20 wells	MD-B29	For 50ml centrifuge tube, 4 wells
MD-B1.5	For 1.5ml or 2.0ml tube, 20 wells	MD-BD01	Single bead MD dry bath block, (WxLxH) 79 x104x76mm
MD-B1.5V	For 1.5ml or 2.0ml V-shaped tube, 20 wells	MD-BD02	Dual bead MD dry bath block, (WxLxH) 104 x158x76mm
MD-B0.5+1.5	Combination: for 0.5ml tube, 12 wells; and for 1.5ml tube, 12 wells (on the same side)	MS-BL95-E	Block Lifter, 95mm length with E-type retaining rings

*All technical specifications are subject to change without notice.

*Please visit our website at www.majorsci.com for more product selection and detailed information.



MC-MP01	For Microplate; titerplate (Plain Block)
MC-MP02	For 96 wells deep microplate or PCR plate
MC-B0.5	For 0.5ml, 30 wells
MC-B1.5	For 1.5 or 2.0ml, 30 wells
MC-B0.5+1.5	Combination: for 1.5ml or 2.0ml tube, 15 wells and 0.5ml tube, 15 wells (on the same side)
MC-B0.2+0.5+1.5	Combination: 0.2ml tube (or strip tube for 8 wells), 24 wells; 1.5ml or 2.0ml tube, 10 wells and 0.5ml tube, 10 wells (on the same side)
MC-B13	Well size 13mm, 30 wells
MC-B17	For 15ml centrifuge tube, 15 wells
MC-B20	Well size 20mm, 15 wells
MC-B25	Well size 25mm, 6 wells

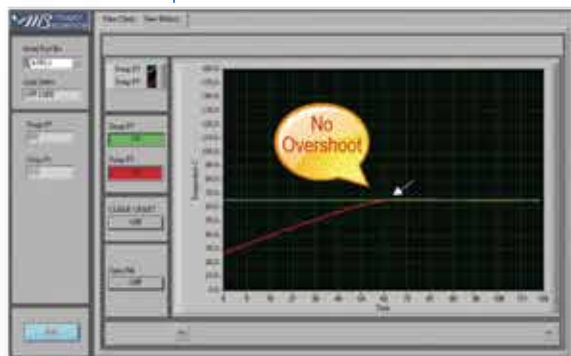
MC-B29	For 50ml centrifuge tube, 6 wells
MC-B0.2H	(1/2) half block for 0.2ml tube, 40 wells (or 0.2ml PCR strip tube for 8 wells x 5) One Ultimate Dry Bath Incubator can insert 2ea of half block
MC-B0.5H	(1/2) half block for 0.5ml tube, 15 wells One Ultimate Dry Bath Incubator can insert 2ea of half block
MC-B1.5H	(1/2) half block for 1.5 or 2ml tube, 15 wells One Ultimate Dry Bath Incubator can insert 2ea of half block
MC-BS0.2+0.5	Combination: 0.2ml tube, 36 wells; 0.5ml, 20 wells
MC-BS0.5+1.5	Combination: 0.5ml tube, 18 wells; 1.5ml, 14 wells
MC-BD	Ultimate bead bath block, (WxLxH) 90 x127x76mm
MS-BL95-E	Block Lifter, 95mm length with E-type retaining rings

Stirring Water Bath

SWB series

Cat. No.	SWB-10L-1	SWB-10L-2	SWB-20L-1	SWB-20L-3
Number of stirring mechanisms	1	2	1	3
Stirring speed	400-1500rpm (measured by percentage)			
Bath capacity	Approx. 10L		Approx. 20L	
Water circulation function	Yes			
Display	LCD			
Heating power	600W		800W	
Controller	Digital microprocessor controller			
Bath temperature	5 °C above ambient to 99 °C			
Temperature increment	0.1°C			
Temperature accuracy	± 0.2 °C at 37 °C			
Timer	99 (hr): 59 (min) / Continuous			
Safety device	Warning indication on screen with alarm and automatic shut down			
Bath Inner dimension (mm)(WxLxH)	240x300x150		300x500x150	
Dimension (mm)(WxLxH)	255x355x240 (without lid)		330x540x240 (without lid)	

As little as 34/60 mins required to reach 65°C in 10L/20L bathes.



SWB-20L Series

- Temp. set value: 65°C
- Initial temp. value: 27°C
- Water volume: 12 liters
- Process time: Approx. 60mins

SWB-10L Series

- Temp. set value: 65°C
- Initial temp. value: 17°C
- Water volume: 5 liters
- Process time: Approx. 34mins



- Built-in magnetic stirring mechanism ensures outstanding temperature uniformity
- Polycarbonate lid for better observation
- User temperature calibration
- Data logging software available upon ordering

Max. capacity:
15 sets of 250ml flasks
8 sets of 500ml flasks



Illustrates max. chamber capacity only.

Max. capacity:
6 sets of 250ml flasks
4 sets of 500ml flasks



Built-in magnetic stirring mechanism ensures outstanding temperature uniformity



Water circulation function

- Magnetic agitator
- Stir bar



Side opening of the lid to allow minimum evaporation while maintaining water bath temperature.



Concave lid design allows condensation flow back to the tank.



www.majorsci.com

info@majorsci.com



US Office

19959 Sea Gull Way
Saratoga, CA 95070
U.S.A.
T/ +1-408-366-9866
F/ +1-408-446-1107



Taiwan Office

Head Office:

No. 156, Sec. 1, Guoji Rd., Taoyuan Dist.,
Taoyuan City 33061, Taiwan
T/+886-3-3762878
F/+886-3-3761310

Factory:

No.19, Ln. 207, Huakang St. Bade Dist.,
Taoyuan City 33464 Taiwan
T/ +886-3-3623319
F/ +886-3-3623133



Shanghai Office

Room 612, International business exhibition center,
9300 Hunan Road, Pudong, Shanghai, China
National toll-free No.:400-823-9177
T/ +86-21-50795277
F/ +86-21-50795277

India Office

D. No. 12-13-99, Satguru Apts. Extn.
Street. No. 3, Lane No.1, Tarnaka
Secunderabad – 500 017. India
T/ +91-40-27001515
T/ +91-40-27001586