

— PROTOCOL —

## 50bp DNA Ladder RTU (Ready-to-Use)

| Catalog Number | Unit Size      |
|----------------|----------------|
| DM012-R500     | 56 µg / 500 µl |

**Storage** : Stable for up to 6 months at 4°C.

Stable for up to 24 months at -20°C.

### Description

A unique combination of PCR products and a number of proprietary plasmids digested with appropriate restriction enzymes to yield 17 fragments, suitable for use as molecular weight standards for agarose gel electrophoresis. The DNA includes fragments ranging from 50-1,500 base pairs. The 200, 500 and 1200 base pair bands have increased intensity to serve as reference points. The approximate mass of DNA in each band is provided (0.56 µg a load) for approximating the mass of DNA in comparably intense samples of similar size.

### Source

PCR products and double-stranded DNA digested with appropriate restriction enzymes, are phenol extracted and equilibrated to 10 mM Tris-HCl (pH 8.0) and 10 mM EDTA.

**Range:** 50-1,500 bp

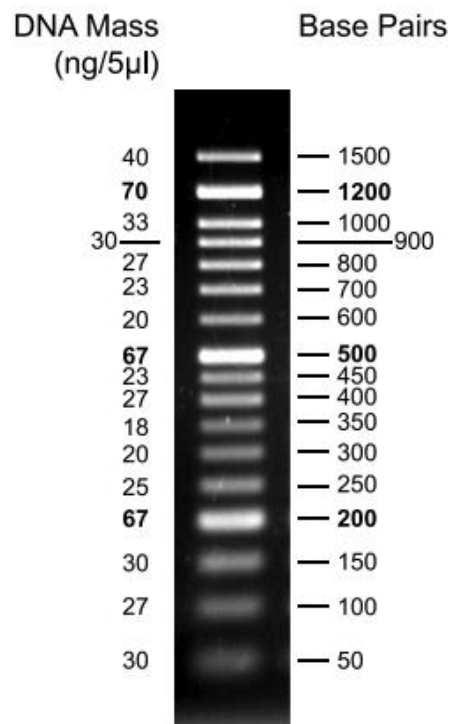
**Number of bands:** 17

**Concentration:** 112 µg / ml

**Package:** 56 µg / 500 µl

**Recommended Load:** 5 µl / well

Containing orange G as tracking dye.



2% TAE agarose gel