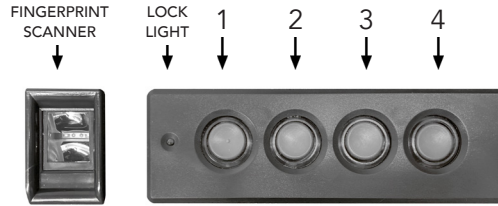


TOP VAULT BIOMETRIC PISTOL SAFE LOCK INSTRUCTIONS



The Electronic Keypad 6-digit code is set to the **Factory Default Code: 1-2-3-4-1-2**

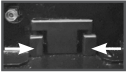
1. OPENING THE SAFE:



Twist key **RIGHT** (clockwise) to open door of the safe for the first time.

THE KEYS WILL BE LOCATED IN FOAM CUTOUT IN THE SAFES PACKAGING. BE SURE TO CHECK ALL SIDES OF THE FOAM PACKAGING FOR THE KEYS.

2. INSERT BATTERY OR POWER CABLE:



Pinch tabs on battery tray and slide out from the battery compartment.



Insert Brand New Duracell Battery into tray and slide back into compartment with new battery



ONLY USE A BRAND NEW DURACELL COPPERTOP 9 VOLT BATTERY EXPIRING 5 YEARS IN THE FUTURE. THIS BATTERY HAS THE AMPERAGE OUTPUT NEEDED TO OPEN THE SAFE DOOR.



Or simply plug in the included power cable to the safe's port. Both power cable and battery can be inserted at the same time.

3. CHANGE / SET YOUR 6-DIGIT CODE:



**DEFAULT COMBINATION:
1-2-3-4-1-2**

STEP 1: Hold down **BUTTON 1** until the lock beeps 3 times and light flashes green - Green light will remain on

STEP 2: Enter your current **6-Digit Code** (or Default Code)
- Lock will beep and flash 3 times.

IF THIS IS THE FIRST TIME YOU'RE SETTING A 6-DIGIT CODE, YOU WILL USE THE DEFAULT COMBINATION (SHOWN ABOVE) INSTEAD OF THE 'CURRENT' 6-DIGIT CODE FOR THIS STEP.

STEP 3: Enter your **NEW 6-DIGIT CODE**
- Lock will beep and flash 3 times.

STEP 4: **RE-ENTER** that New 6-Digit Code (Lock will chime)

The chime indicates the new 6-digit code was successfully set!

NOTE: IF THE LOCK BEEPS 5 TIMES & FLASHES RED, THIS MEANS THE NEW CODE WAS NOT SUCCESSFULLY SET. IF THIS HAPPENS, SIMPLY START AGAIN FROM STEP 1.

IMPORTANT: TEST THE NEW CODE SEVERAL TIMES WITH THE DOOR OPEN TO ENSURE IT HAS BEEN PROPERLY SETUP BEFORE YOU CLOSE THE DOOR.

RECORD NEW 6-DIGIT CODE HERE:

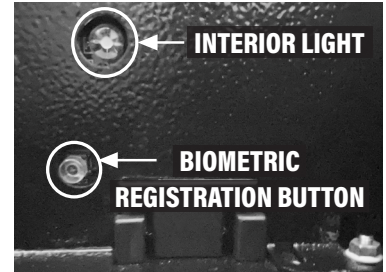
□ - □ - □ - □ - □ - □

4. REGISTER FINGERPRINT

THE SAFE WILL OPEN ON ANY FINGERPRINT UNTIL

YOU SUCCESSFULLY REGISTER THE FIRST FINGERPRINT. (You can register up to 31 different fingerprints)

If you tried registering a fingerprint but it still opens on any fingerprint, you did NOT successfully register that fingerprint and you will need to try again using the steps listed below.



STEP 5: Press Biometric Registration Button **ONCE** (DO NOT HOLD) Green light will flash, you will hear a beep and the scanner will illuminate green.

STEP 6: Place finger fully on Scanner
- HOLD on scanner until lock Chimes



The chime indicates your fingerprint was successfully registered!

NOTE: IF LOCK BEEPS 5 TIMES & LIGHT FLASHES RED, THE FINGERPRINT WAS NOT SUCCESSFULLY REGISTERED. IF THIS HAPPENS, SIMPLY START AGAIN FROM STEP 5.

ADDING MORE FINGERPRINTS: Simply repeat the steps 5-6 listed above for each new fingerprint.

SILENT MODE:

Press and HOLD Button 4 for 5 seconds until lock light flashes this means the safe is now in silent mode. To turn the sound back on, simply HOLD Button 4 for 5 seconds until you hear a beep.

TROUBLESHOOTING:

CONTINUOUS RED LIGHT ON - You need to replace the battery with a Brand New Duracell Coppertop 9-Volt that expires after 5 years.

WON'T STOP BEEPING/FLASHING - You are in Lockout mode, which is caused by 4 wrong entry attempts in a row using either the keypad, biometrics or a combination of both. Lockout mode will end after 5 minutes (with power). Unplugging the power cable / taking out the battery will pause the 5 minute lockout period only to resume when power is added back to safe.

RESETTING THE LOCK:

HOLD Biometric Registration Button for about 5 seconds until you hear the chime. Safe will revert back to default settings (see below)

DEFAULT SETTINGS: Lock will open on Default Code [1-2-3-4-1-2], any registered fingerprints will be erased & default to open on any fingerprint - until first fingerprint is successfully registered.

STEALTH TOP VAULT SECURITY CABLE INSTRUCTIONS

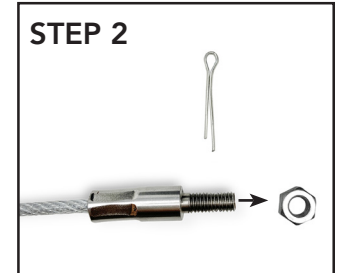
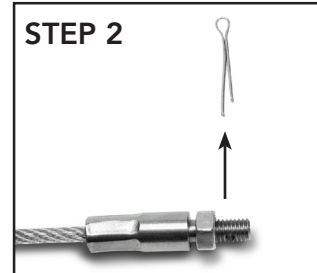
STEP 1

- Wrap cable around a secure object
- Insert end with pin and screw through the loop on the other end of the cable



STEP 2

- Remove pin from end of security cable
- Unscrew metal nut from screw



STEP 3

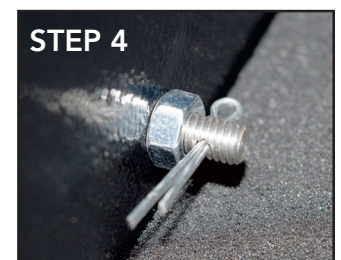
- Insert the end of the screw into the hole from the outside of the Top Vault



***IMPORTANT:** MAKE SURE THE SIDE WITH THE CABLE IS ON THE OUTSIDE OF THE SAFE WHEN INSERTED - AS SHOWN IN IMAGES ABOVE

STEP 4

- Tightly thread nut back onto end of screw (*inside safe*)
- Insert pin back into hole on end of screw



Your security cable is now installed!



Questions/Need Help? Contact Us at:
info@stealthsafes.com

View Product Instructions Online at:
www.StealthSafes.com/Instructions