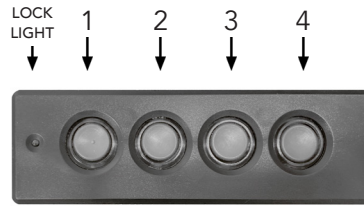




BIOMETRIC SWIFTVault 2.0 LOCK INSTRUCTIONS



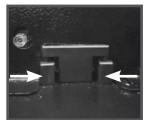
Your Electronic Lock is currently set with the Default Combination of:
1-2-3-4-1-2

OPEN:

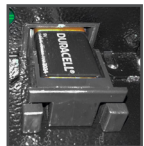


STEP 1: Twist key **RIGHT** (clockwise) to open door for the first time.

INSERT BATTERY OR POWER CABLE:



STEP 2: Pinch tabs together and slide out the battery compartment.

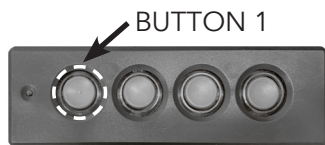


STEP 3: Insert a 9V battery into battery compartment & slide battery compartment back into place.



OR simply insert cord into the power cable hole and plug into an outlet.

CHANGE YOUR COMBINATION:



DEFAULT COMBINATION:
1-2-3-4-1-2

STEP 4: Hold down **BUTTON 1** until green light turns on - lock will beep twice.

STEP 5: Enter your **current 6-digit combination** - lock will beep twice.

*When opening the safe for the first time, use the factory **DEFAULT COMBINATION: 1-2-3-4-1-2**

STEP 6: Enter your **NEW 6-digit combination** - lock will beep 3 times.

STEP 7: Re-enter your **NEW 6-digit combination** - lock will chime.

Your new combination is now installed.

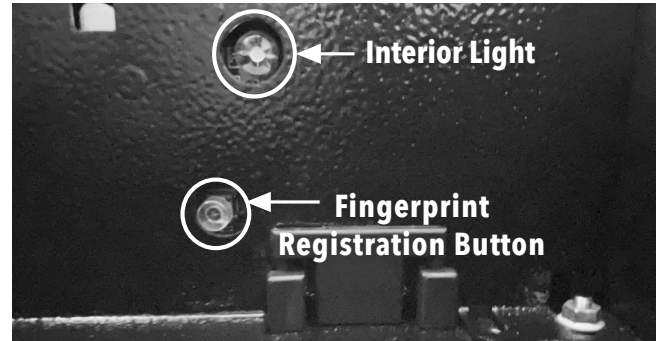
*If lock beeps 5 times, combination was not installed successfully. Restart from STEP 4.

IMPORTANT! Test your new combination several times with the door open to ensure new combination is properly set before closing and locking safe.

RECORD NEW COMBINATION HERE:

□-□-□-□-□-□

BIOMETRIC FINGERPRINT SCANNER:



NOTE: THIS SAFE WILL OPEN WITH ANY FINGERPRINT UNTIL THE FIRST FINGERPRINT IS REGISTERED. If it's still opening with every fingerprint you have NOT yet successfully registered your fingerprint. You can register up to 31 different fingerprints by following the steps below. Button cover needs to be removed to press fingerprint registration button.

STEP 8: Remove Button Cover and Press (do **NOT** hold) Fingerprint Registration Button **ONCE** - lock will beep twice and finger scanner will illuminate green.

STEP 9: Position finger fully on biometric scanner - hold until lock chimes.



Your Fingerprint is Now Installed Successfully.

*If lock beeps 5 times, lock light flashes red, and fingerprint scanner stays green, fingerprint was not installed successfully. Restart from Step 8.

SILENT MODE:

To turn ON Silent Mode press and hold Button 4 for about 5 Seconds until you see a light flash. To turn OFF Silent Mode Hold Button 4 again until light flashes and you hear a beep.

BATTERY LIFE:

If you see a continuous red light on - replace battery.

OPERATING INFORMATION:

- Lock will go into standby after 10 seconds of inactivity.
- Lock will go into lockout mode for 5 minutes after 4 wrong combination attempts.

RESET LOCK:

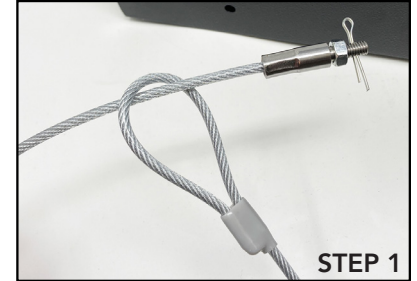
- Hold down Fingerprint Registration button until lock beeps 5 times.

NOTE: Lock will reset to the default code: 1-2-3-4-1-2 and erase all registered fingerprints. Safe will default to open on ANY Fingerprint.

SWIFTVAULT 2.0 SECURITY CABLE INSTRUCTIONS

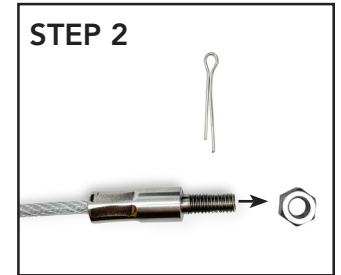
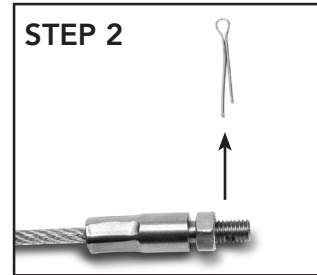
STEP 1:

- Wrap cable around a secure object
- Insert end with pin and screw through the loop on the other end of the cable



STEP 2:

- Remove pin from end of security cable
- Unscrew metal bolt from screw



STEP 3:

- Insert the end of the screw into the hole on the side of the SwiftVault

NOTE: Make sure the cable is on the outside of the safe as shown in step 3 images.



STEP 4:

- Tightly screw bolt back onto end of screw on the inside of the safe
- Insert pin back into hole on end of screw



WATCH OUR INSTRUCTIONAL VIDEO ON SETTING UP YOUR SWIFVAULT



← **SCAN HERE**

USING THE CAMERA ON YOUR SMARTPHONE OR A QR CODE SCANNER TO LEARN ALL ABOUT HOW TO SET YOUR COMBINATION & REGISTER A FINGERPRINT

OR TYPE IN THE URL tinyurl.com/StealthSwiftVault INTO YOUR BROWSER