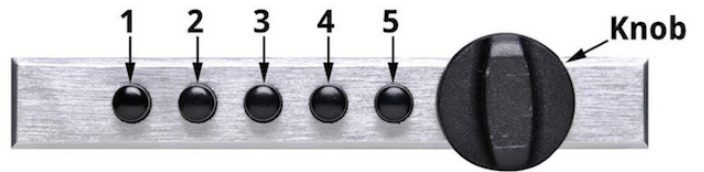




Simplex® Lock Quick Reference

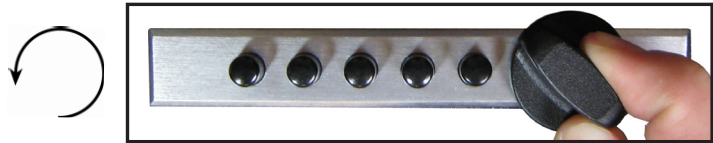
Step by Step Instructions

Your Simplex Lock is currently set with the default combination of 2-4, and then 3.

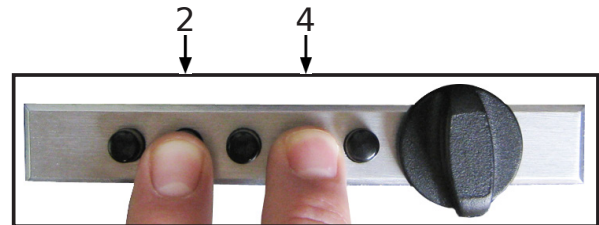


TO OPEN:

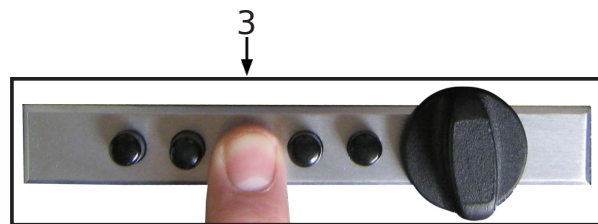
Step 1: Twist knob LEFT (counter-clockwise) to clear all buttons.



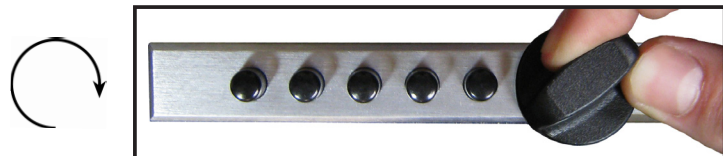
Step 2: Push down buttons 2 and 4 at the same time.



Step 3: Push down button number 3.



Step 4: Twist knob RIGHT (clockwise).

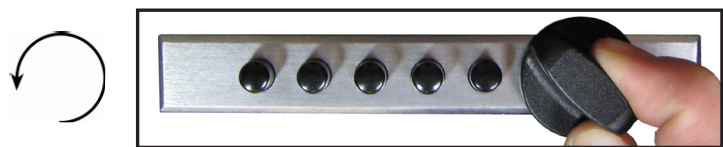


Step 5: Knob should twist 90° and be parallel to lock. Open Safe.



TO LOCK:

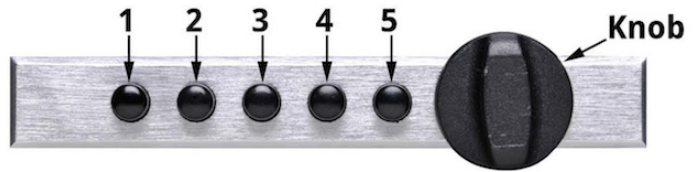
Step 1: Twist knob LEFT (counter-clockwise).



Step 2: Knob should lock in place.



Simplex® Lock Quick Reference



NOTE BEFORE CHANGING YOUR COMBINATION:

- Your Simplex Lock can be changed to any combination.
- Use anywhere from button 1 to all 5 buttons for your combination.
- Two or more buttons may be pushed at one time as part of your new combination.
- Simple two and three button combinations are easy to remember and still provide top security.
- Do NOT force knob to turn. As a safety feature, it will break.
- **Please Note:** Each button may only be pushed once in your new combination.

HOW TO CHANGE YOUR COMBINATION:

Step 1: Unlock safe & lift up safe door.

Step 2: Turn knob LEFT (counter-clockwise) to relock lock while safe is still open.

Step 3: Enter lock's current combination ONLY. Do NOT turn knob.

Note: Default combination is 2-4, and then 3 (see other side)

Step 4: On the inside of the safe, pull back protective foam (as shown in the photo to the right) to find the Combo Change Button.

Step 5: Push Button.

Step 6: Turn knob LEFT (counter-clockwise) to clear lock's existing combination.

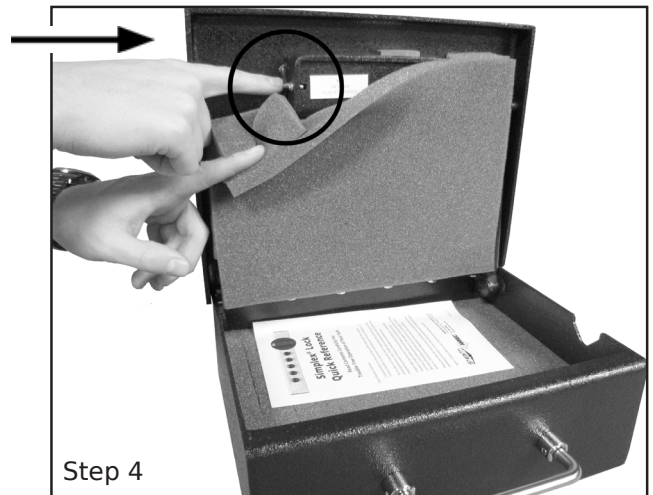
Step 7: Enter NEW customized combination.

Step 8: Turn knob RIGHT (clockwise) to install new combination.

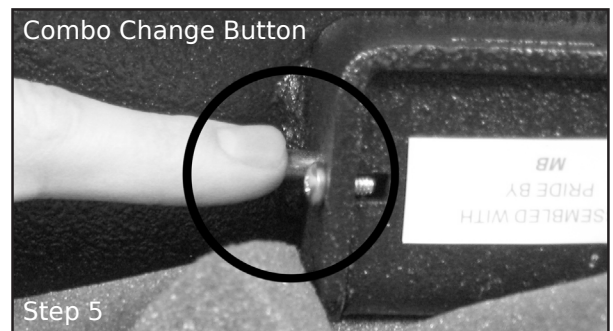
Step 9: Turn knob LEFT (counter-clockwise) to lock the lock.

Your new combination is now installed.

Combo Change Button



Combo Change Button



RECORD NEW COMBINATION HERE:

IMPORTANT

Test your new combination several times with the door open to ensure new combination is properly set before closing and locking safe.