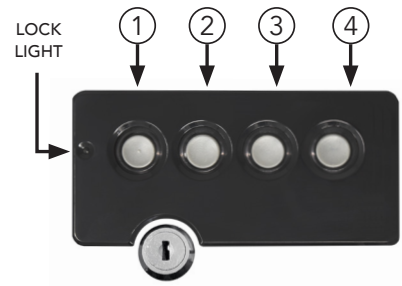


# HANDGUN HANGER SAFE

---

# LOCK INSTRUCTIONS



## 1. OPENING THE SAFE FOR THE FIRST TIME



Twist key **LEFT** ↻ (counter-clockwise) to open door

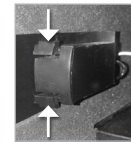
*Keys are Located in Foam Cutout in the safes Packaging. Make sure to check all sides of packaging for keys.*

## 2. INSERT BATTERY OR POWER CABLE:



Use a **Brand New Duracell Coppertop 9 Volt Battery** with an **expiration date 5 years** in the future. *This battery has the highest amperage output that is needed to open the safe door.*

- Pinch **Tabs** on Battery Tray & Slide out from the Battery Compartment.
- Insert **Battery into Tray** & Slide back into Battery Compartment.

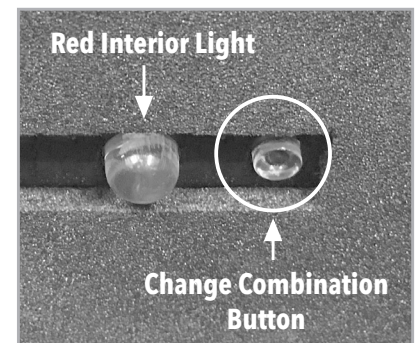


## 2. SETTING UP YOUR 6-DIGIT CODE

FACTORY DEFAULT CODE: **1-2-3-4-1-2**

Press (Do **NOT** Hold) **Change Combination Button** - Next to the Red Light  
Enter your **New 6-Digit Code** - Lock will Beep, Click & light will turn on  
**You Have Successfully Added your New Code.**

**IMPORTANT:** Test the new code several times with the door open to ensure it has been properly setup before you close the door.



**SILENT MODE** Hold Down **Button 4** for about 5 seconds until you see a green flash on the lock light. Hold down Button 4 again to turn sound back on.

## TROUBLESHOOTING

**CONTINUOUS RED LIGHT ON** - You need to replace the battery with a Brand New **Duracell Coppertop 9 Volt** that expires after 5 years.

**WON'T STOP BEEPING?** - You are in **Lockout mode**. Lockout mode is caused by **5 wrong code inputs** using the electronic keypad in a row. Lockout mode will **end after 5 minutes (with power)**. Unplugging the power cable or taking out the battery during lockout mode will only pause the 5 minute period to resume next time power is added back to safe.

## INSTRUCTIONAL VIDEO

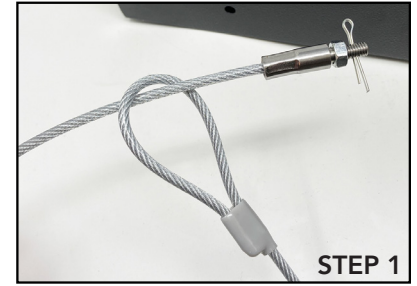
Scan the QR Code below to watch an instructional Video on setting up your Handgun Hanger Safe



# HANDGUN HANGER SAFE **SECURITY CABLE INSTRUCTIONS**

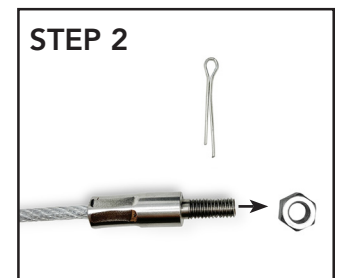
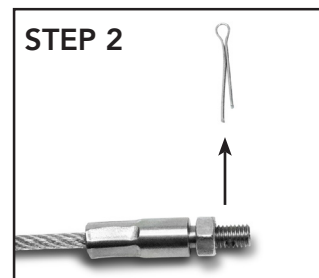
## **STEP 1:**

- Wrap Cable Around a Secure Object
- Insert End with Pin and Bolt through the Loop on the other end of the Cable



## **STEP 2:**

- Remove Pin from end of Bolt
- Unscrew Metal Nut from Bolt



## **STEP 3:**

- Insert the end of Bolt into the Hole on the Side of the Safe

NOTE: Make sure the cable is on the outside of the safe as shown in step 3 images.



## **STEP 4:**

- Tightly Screw Nut back onto end of Bolt on the inside of the Safe
- Insert Pin back into Hole on end of Bolt



TO SEE ALL INSTRUCTIONS, VISIT:  
[StealthSafes.com/Instructions](http://StealthSafes.com/Instructions)

