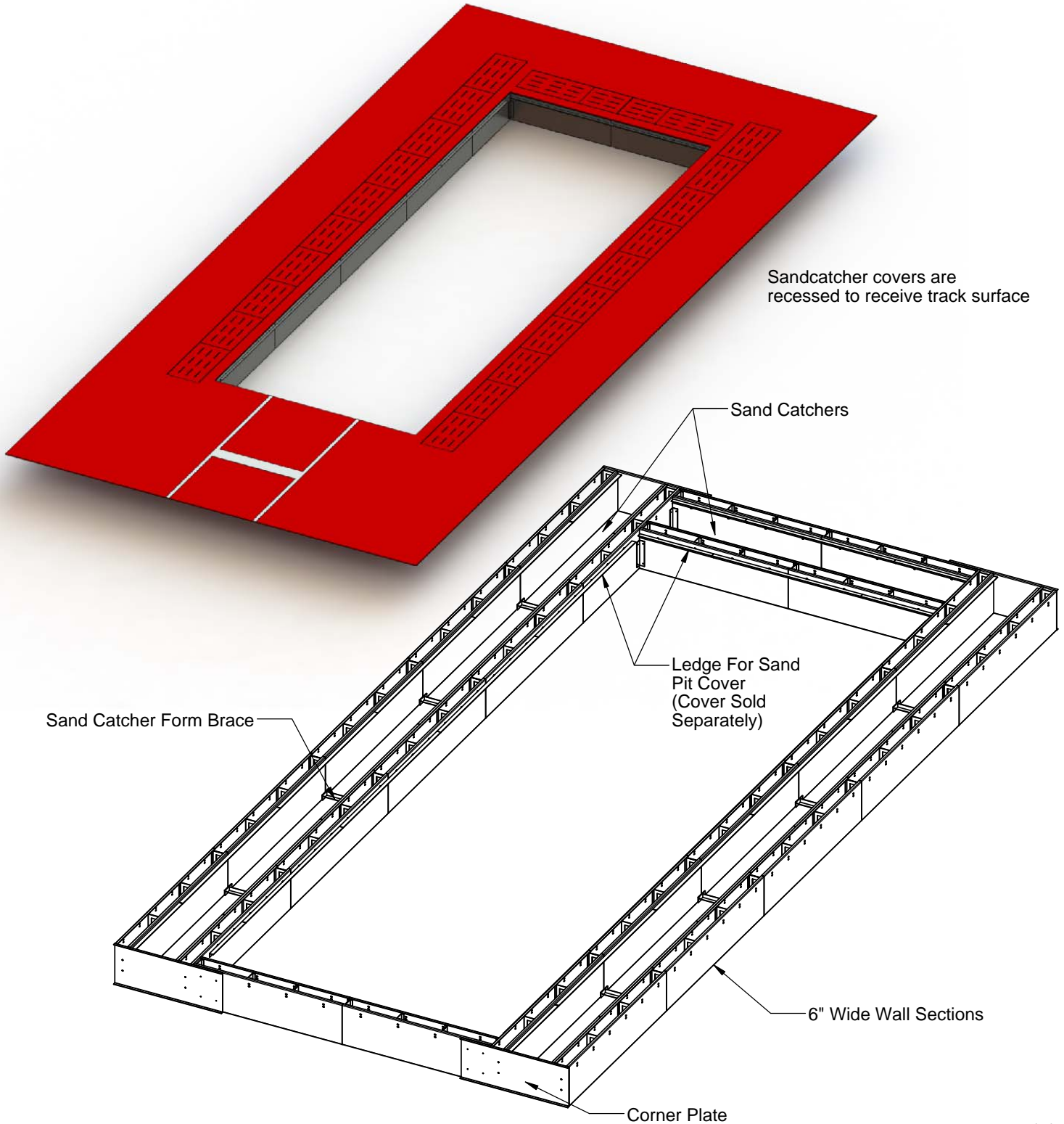




www.gillathletics.com
800-637-3090

F461 SERIES SAND PIT FORM WITH ADDITIONAL SAND CATCHERS SPECIFICATIONS

Prefabricated to meet NFHS, NCAA and IAAF specifications. Designed to facilitate easy set up and convenient concrete pour. Structure is made of specially folded 1/8" aluminum to maximize integrity and rigidity. Built in ledge to receive aluminum sand pit cover. The sandcatcher system with included sand catcher covers, allows sand to be conveniently stored when the pit is covered and quickly returned to the pit for competition. The additional sandcatcher on the back further reduces clean-up.



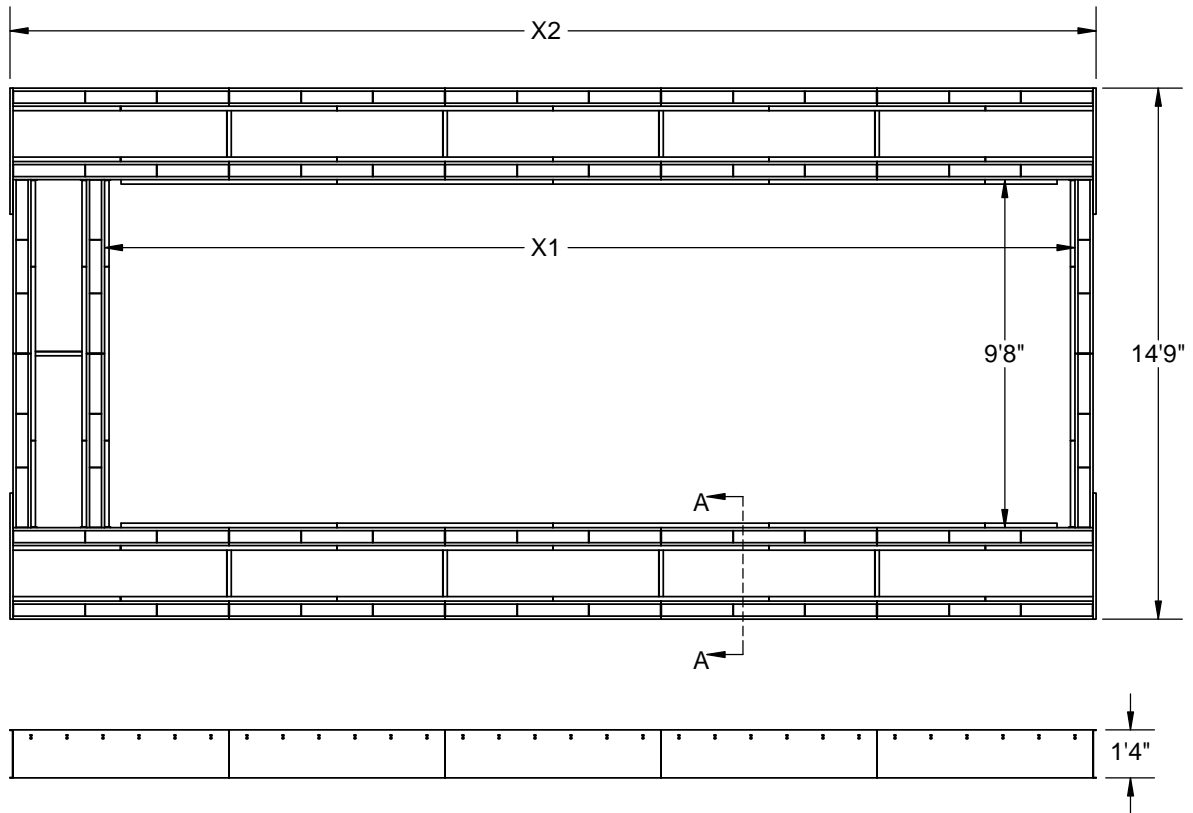


www.gillathletics.com
800-637-3090

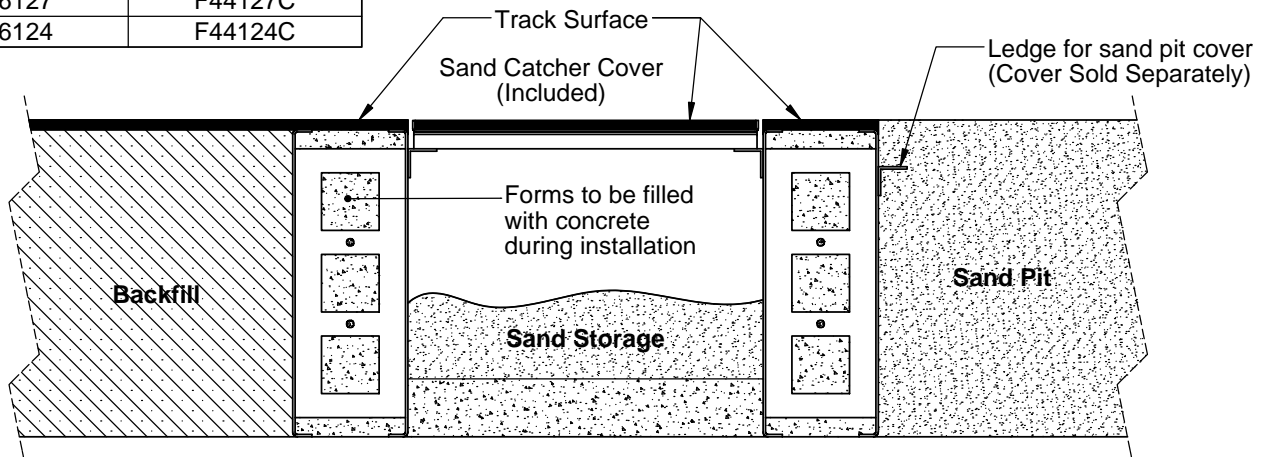
F461 SERIES SAND PIT FORM WITH ADDITIONAL SAND CATCHERS SPECIFICATIONS

| DIMENSIONS | | |
|------------|----------|--------|
| Model | X1 | X2 |
| F46130 | 29'-11½" | 33'-2" |
| F46127 | 26'-11½" | 30'-2" |
| F46124 | 23'-11½" | 27'-2" |

| | IAAF | NCAA | NFHS |
|--|--------|--------|--------|
| Minimum Pit Width | 2.75m | 9'-0" | 9'-0" |
| Maximum Pit Width | 3.00m | | |
| Minimum Pit Length | | | 15'-0" |
| Minimum Distance from Takeoff Board to Back of Pit | 10.00m | 10.00m | |



| STANDARD COVER GUIDE | |
|----------------------|----------------|
| Sand Pit Model | Standard Cover |
| F46130 | F44130C |
| F46127 | F44127C |
| F46124 | F44124C |



SECTION A-A
SCALE 1 : 10