

2U (EOS) EXPANSION OPTIMIZED SERVER



Step 1: Remove the Face Plate or Front Cover



Step 2: Pull the Drive Tray to mount the storage drive



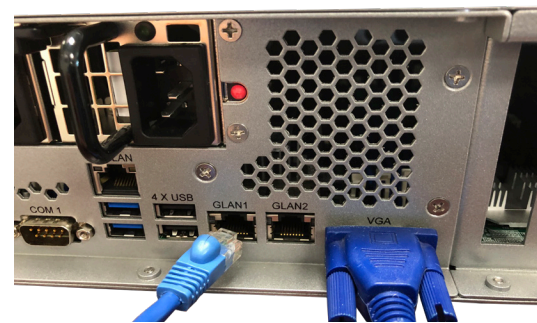
Step 3: Re-insert the Drive Tray Back



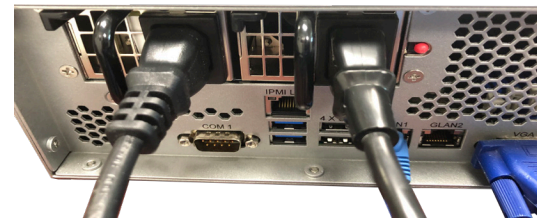
Step 4: Connect VGA



Step 5: Connect Ethernet



Step 6: Connect Power Cords



Step 7: Connect the Mouse and Keyboard

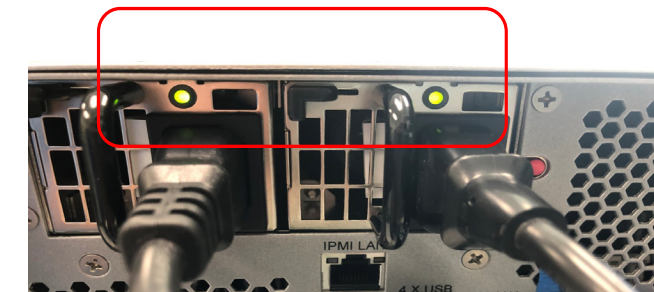


Step 8: Press the front "Power Button"

Orange LED should come ON immediately upon powering ON the system

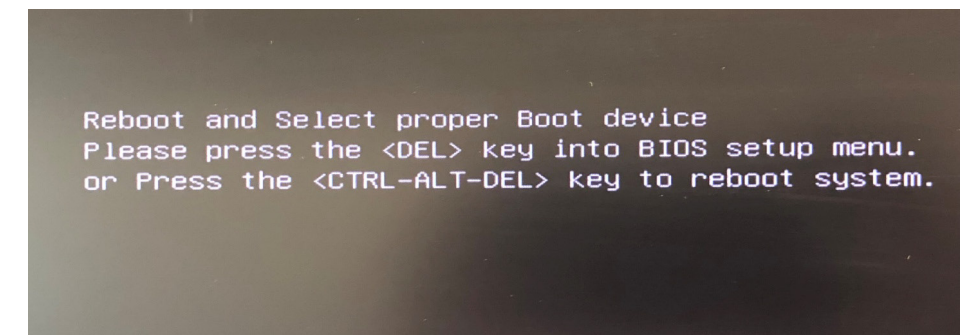


Power Supply LED indicator will come up as solid green



Step 9: Boot Device

During the boot up process, splash screen will prompt to select boot drive. Go to BIOS, select initial boot device, save settings and reboot. System will restart.



Need More Help?

Download the User Manual at www.onestopsystems.com
One Stop Systems Support: www.onestopsystems.com/support-0
Toll Free: +1 (877) 438-2724 Local: +1 (760) 745-9883



WARNING

Electrostatic Discharge (ESD) Warning

Electrostatic Discharge (ESD) is the enemy of semiconductor devices. You should always take precautions to eliminate any electrostatic charge from your body and clothing before touching any semiconductor device or card by using an electrostatic wrist strap and/or rubber mat.

FCC Statement

NOTE: This equipment has been tested and found to comply with the limits for a Class A digital device, pursuant to part 15 of the FCC Rules. These limits are designed to provide reasonable protection against harmful interference when the equipment is operated in a commercial environment. This equipment generates, uses, and can radiate radio frequency energy and, if not installed and used in accordance with the instruction manual, may cause harmful interference to radio communications. Operation of this equipment in a residential area is likely to cause harmful interference in which case the user will be required to correct the interference at his own expense. Changes or modifications not expressly approved by the party responsible for compliance could void the user's authority to operate the equipment.

This device complies with Part 15 of the FCC Rules. Operation is subject to the following two conditions: (1) this device may not cause harmful interference, and (2) this device must accept any interference received including interference that may cause undesired operation.

Industry Canada

This Class A digital apparatus complies with Canadian ICES-003.
Cet appareil numérique de la classe A est conforme à la norme NMB-003 du Canada

CE

The product(s) described in this manual complies with all applicable European Union (CE) directives. One Stop Systems will not retest or recertify systems or components that have been reconfigured by customers.

© 2019 ONE STOP SYSTEMS, INC.