

OLURA®

Eno™ Custom Facial Kit



USER GUIDE

CONTENTS

DEVICE INTRO	03	10	EXFOLIATION
CHARGING YOUR ENO™	04	12	INFUSION
OLURA PRODUCTS	05	13	SCULPTING & MOISTURE
QUICK START GUIDE	06	14	WARNINGS, CONTRAINDICATIONS & MISC
CUSTOMIZE YOUR PRODUCTS	08	15	WARRANTY & FCC STATEMENT
PROTOCOLS	09		



INSTRUCTIONAL
VIDEOS. Scan the
QR code to watch
instructional videos
on performing the
Olura Facial.

READ ALL INSTRUCTIONS,
WARNINGS AND
CONTRAINDICATIONS
BEFORE USING THE ENO™

INTRODUCTION

Included in the Box

- Eno™ Device
- Charging Cable
- Power Adaptor
- User Guide
- Refreshing Essence
- Moisturizing Lotion & Moisture Enhancer
- Treatment Serum & 2X Concentrated Boosters



POWER BUTTON

The Eno™ has separate power buttons for controlling the Disc and Exfoliation applicators that will illuminate when pressed. You may toggle between applicators by pressing the other power button. To turn the device off, hold the power button for two seconds, the unit will beep once and the light will turn off.

AUTO OFF

The device will turn off automatically after 8 minutes of use.

Eno™ Multi-Function Overview



Eno™ Disc

INFUSION

The Eno™ Disc delivers 350,000 micro-vibrations per second to optimize the delivery of your Olura Treatment Serum.

SCULPTING

The Eno™ Disc's ultrasonic vibrations are used in a lifting massage that gives your face a more toned and lifted appearance.



Eno™ Exfoliator

EXFOLIATOR

The Eno™ Exfoliator vibrates at 25,000 times per second to provide a safe, gentle, and effective means to cleanse, exfoliate, and create a more radiant skin tone.

WIRELESS CHARGING

Charging the Eno™

- Charge the device completely (6-8 hours) before first use and store the Eno™ in the charging cradle between uses.
- Insert the power adaptor into the socket located on the underside of the charging cradle and plug the cord into a power source.
- Place the Eno™ into the touchless charging cradle. The device will seat into the base via the magnetic alignment system and the round power button will illuminate.

Battery Light Indicators

- When the battery is low, the LED's in the two power buttons will blink, notifying you that charging is required.
- When the battery is charging, the LED light in the small round Infusion / Disc power button will blink.
- Once the device is completely charged the LED light in the small round Disc button will stop blinking and glow steady.
- The LED lights will turn off when the device is not on the charging cradle and not in use.

Adaptor

Your Eno™ adaptor works for 100-240V ~ 50/60Hz 0.2A.

Warming During Charging

The Eno™ utilizes a touchless induction charging system, which may cause the device to feel warm when you remove it from the charger. Do not use the device if it feels too hot, unplug the charging cradle and contact customer service at customerservice@olura.us.



Battery Light Indicators

Warning

Use only the provided adaptor with the Eno™. Do not charge your device in or around any water. Doing so could increase your chances of electric shock, serious injury or device malfunction.



Connect the adaptor to the port on the underside of the charging cradle.

OLURA PRODUCTS

All Olura® products are “Clean” and free of toxic ingredients like sulfates, mineral oils, and formaldehydes



REFRESHING ESSENCE

STEP 1. PREPARE

A three-in-one hydrating essence with Trehalose that deeply moisturizes, protects the skin barrier, and battles free radicals. The water-light texture delivers a burst of powerful moisture that penetrates without adding weight to leave the skin looking healthy, soft and supple.

Use while exfoliating with your Eno™ device, as a base layer under your products, and as a hydrating pick-me-up during the day.



SERUM & BOOSTERS

STEP 2. TREAT

A light serum that's powered by our own Niapeptin Complex™, which combines Niacinamide with multiple peptides to fight numerous signs of premature aging. Customized with two Concentrated Boosters selected to deliver exactly what your skin needs. Specially formulated for infusion with the Eno™ Disc.

Before your first treatment: Squeeze the entire contents of both Concentrated Booster tubes into the Treatment Serum bottle and shake for 10 seconds to mix.



LOTION & ENHANCER

STEP 3. MOISTURIZE

A silky lotion engineered with Niacinamide (B3) to improve overall skin elasticity, firmness and texture while drenching the skin in lightweight hydration. Mix fresh with the included Moisture Enhancer to add a triple boost of antioxidant protection from Trehalose, Olive and Echium seed oils. Great for all skin types, even oily skin.

Before your first treatment: Squeeze the entire tube of Moisture Enhancer into the Moisturizing Lotion bottle and shake for 10 seconds to mix.

QUICK START

01

Make sure your Eno™ is fully charged.

Before your first use, remove the protective tape from the disc & exfoliator. Plug the charging cable into the underside of the charging base.



02

Mix your Olura products together.

Empty the two Boosters into the Treatment Serum and the Moisture Enhancer into the Moisturizing Lotion. Shake the bottles for 10 seconds.



03

Apply your Refreshing Essence liberally.

We mean liberally! Moisture is your friend during the next exfoliation step so make sure your face stays wet with essence - reapply as necessary.



04

Exfoliate with the Eno™

Press the long button to turn on the Exfoliator. Use gentle pressure and push the exfoliator across the skin in overlapping strokes. Treat the entire face and neck. Wipe your face with a damp cloth when finished.



QUICK START

05

Apply your Treatment Serum.

Dab the serum around your face using your fingertips. Leave the product sitting on the surface of the skin, resist the urge to rub it in!



06

Infuse your serum with the Eno™ Disc.

Turn the Infusion Disc on by pressing the small round button. Using circular motions, massage the serum into your skin until completely absorbed.



07

Facial Contouring with the Eno™ Disc

With the infusion disc still on, work around the face with a lifting motion concentrating on any areas that appear puffy or lack tone.



08

Apply your Moisturizing Lotion.

Turn off by holding down the small round power button for 2 seconds. Finish the treatment by applying a small amount of Moisturizing lotion to your face & neck.



CUSTOMIZE PRODUCTS

Mix your products together before your first treatment.



TREATMENT SERUM

Completely empty both boosters into your Olura Treatment Serum and shake for 10 seconds.



MOISTURIZING LOTION

Completely empty the Moisture Enhancer into your Olura Moisturizing Lotion and shake for 10 seconds.

PROTOCOLS



PRODUCTS

Use your Olura products every day as a part of your normal skincare routine.



EXFOLIATOR

Gentle enough to use every-other-day. If your skin is sensitive, start with 1-2 times per week.



SCULPT & INFUSE

Use whenever you apply your Treatment Serum- as often as 2X per day.

STEP ONE: EXFOLIATE

To start, exfoliate 1-2 times per week and increase up to three times per week as long as it's comfortable.

Note: A slight redness after treatment is normal and should completely dissipate within a few minutes.



01 CLEANSE

Cleanse your face. We also recommend removing any facial jewelry and earrings.

02 SPRAY

Spray Olura® Refreshing Essence liberally across your face so that your skin is wet. Keep the skin wet during the entire exfoliation treatment, reapplying essence as you go. Never exfoliate over dry skin.

03 REMOVE

Take device off charging cradle and remove cap from the Exfoliator end.

04 PRESS

Press the Exfoliator power button to turn on. The device will 'beep' and the LED light in the button will light up.

05 PUSH

Push (never pull) the Exfoliator gently across the skin. Wipe the Exfoliator off as you see debris collecting on its surface.

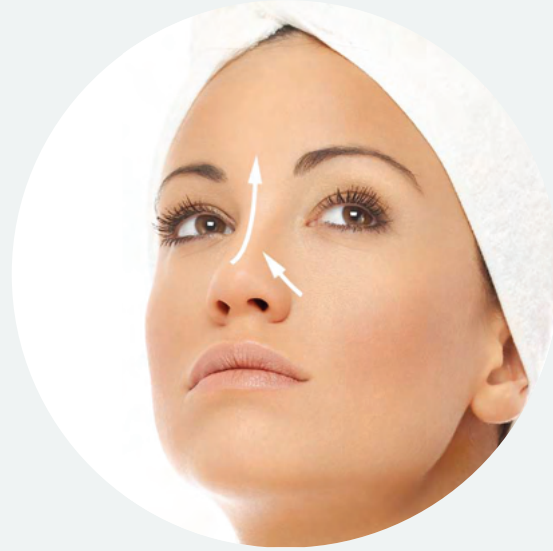
06 TURN OFF

Turn the Exfoliator off by pressing the long power button for two seconds. Wipe your face with a damp towel to remove any excess product. Wipe the exfoliator clean with a damp cloth or alcohol, and replace the protective cap.

STEP ONE: EXFOLIATE



Glide from outside of the face towards the center, overlapping your strokes.



Exfoliate the nose from the bottom towards the bridge and up the bridge towards the brows.

KEYS TO EXFOLIATION

- Always push the blade across the skin, don't pull
- Keep the skin wet at all times
- Use light pressure

STEP TWO: INFUSION

Infuse and Sculpt with the Eno™ Disc whenever you apply your Olura products - as often as twice per day.

01 APPLY

Apply the Olura® Treatment serum to your cleansed face with your fingertips. Leave the product sitting on top of the skin, do not rub in with fingers.

02 TURN ON

Turn on the Ultrasonic Disc by pressing the small round power button. You will hear a beep, see the light in the power button come on, and feel a slight vibration.

03 CIRCULAR MOTIONS

Holding the Eno™ comfortably in your hand, use circular motions to slowly and gently move the Disc across your face in circles. Start in the center of your face and move in an upward motion towards the ear. Treat your entire face, taking care to avoid going directly over the eye or eyelid.



Infuse with gentle overlapping circular motions, treating the entire face from the center out towards the ear.

STEPS THREE & FOUR: SCULPT & MOISTURIZE

STEP 3: SCULPT

01 REAPPLY

Reapply a small amount of Treatment Serum if the Disc doesn't glide across the skin.

02 CHEEKS

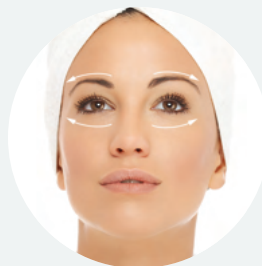
Starting at your chin, use a sweeping, lifting motion out towards your ear. Repeat in overlapping strokes up the face. Perform the same moves on the other side of your face.

03 EYES

Starting under the eye, move the Disc in a sweeping motion out to the temple. Next, start over the eyebrow and move out towards the hairline. Never treat directly over the eyeball. Repeat around the other eye.

04 FOREHEAD

Start at the eyebrow and lift up to the hairline, moving across the forehead until you've treated the entire area.



Note: A slight redness after treatment is normal and should completely dissipate within a few minutes.

STEP 4: MOISTURIZE

Apply a small amount of your Olura® Moisturizing Lotion by hand evenly across your face and neck.

MORE TIPS

TEST YOUR PRODUCTS

If you are unsure of how your face or skin will react to the Eno™ with Olura® products, test the product with the Eno™ on the inside of the forearm. Wait 24 hours to check for any sensitive skin reaction. If any reaction occurs, discontinue use.

CARING FOR ENO™

Keep your Eno™ stored in a dry place at a temperature between 50°F to 90°F. Avoid direct exposure to sunlight to protect the components.

TROUBLESHOOTING

If you experience any issues with your Eno™ device, first make sure that the unit is fully charged. If the issue persists, contact us at customerservice@olura.us for help.

CONTRAINDICATIONS

If you are pregnant, have a pacemaker or a skin condition, consult with your physician before using the Eno™.
FOR EXTERNAL USE ONLY

CLEANING

We recommend cleaning your Eno™ after each use with a clean soft damp cloth. Do not submerge the Eno™ in water at any time or clean it while it is charging. Dry thoroughly in a safe, dry area.

RETURN POLICY

To enjoy the full benefits of the Eno™, we recommend you use it exclusively for at least 21 days. This will allow you to find the most personalized and comfortable way to adapt the Eno™ into your skincare regimen. Clients not completely satisfied may return their purchased products to Olura, LLC for a full refund within 30 days from the purchase date. A signed and fully completed Product Return Form must accompany any return and can be requested at customerservice@olura.us. Shipping fees are non-refundable. Please allow four to six weeks for processing. Promotional products and gift items may not be available for replacement, and may, at Olura's discretion, be exchanged for an item of equal value. The product guarantee applies only to Clients who order directly from Olura, LLC.

CAUTION

1. Use the Eno™ only for its intended use, applying appropriate Olura® skincare products to your face, neck, and décolleté, as described in these directions. Do not use the Eno™ with attachments or products not recommended by Olura®.
2. Do not use the Eno™ directly on the eye or eyelids.
3. Do not use the Eno™ in combination with over-the-counter or prescription drugs, including but not limited to, acne medications such as accutane and benzoyl peroxide, or skincare products containing hydroquinone or tretinoin.
4. Do not use the Eno™ over open wounds, cuts, burns. The device is intended for use only on healthy skin that is intact.
5. The Eno™ is intended for household use only. It is not intended for use by children.

WARNING

- Do not submerge the Eno™ in water.
- Do not clean the Eno™ while it is charging.
- Do not use or store the Eno™ or charging cable near water, or where they can be dropped or pulled into water.
- Do not operate the Eno™ or charging cable if either component has been damaged, dropped, previously or currently immersed in water or if the cable is frayed or damaged.
- Keep charging cable away from heated surfaces and water.
- Do not attempt to disassemble the Eno™ as this can result in void of warranty.

LIMITED WARRANTY

1. WARRANTY COVERAGE

a) For the duration of the Warranty Period, Olura warrants the Product against defects in materials and workmanship arising from Normal Use of the Product.

b) If there is a defect in the Product which is covered by this Limited Warranty, Olura agrees to replace the Product with a new equivalent Product. This is the sole remedy available for breach of Warranty. Should you wish to return the Product for exchange, you must contact customer services at customerservice@olura.us

c) This Limited Warranty is exclusive of all other Warranties, whether oral or written, expressed or implied. There are no implied Warranties created by the manufacture, sale, or use of the Product. If Olura cannot lawfully disclaim implied Warranties under this Limited Warranty, all such Warranties, including Warranty of merchantability and fitness for a particular purpose, are limited in duration of this Limited Warranty. Some states and provinces do not allow limitations on how long an implied Warranty lasts, so this limitation may not apply to you.

2. HOW TO GET WARRANTY SERVICE

Subject to the limitations listed below you may obtain service under this Limited Warranty by contacting our customer service center at customerservice@olura.us.

3. LIMITATIONS

a) This Warranty is limited and may be relied upon only:(i) by the original end user of Olura's Product; and(ii) where the Product was manufactured by or for Olura and sold by an authorized distributor.

b) To obtain service under this Limited Warranty, you will be required to provide Olura with original proof of purchase date.

c) This Limited Warranty does not apply where the Product is subjected to use that does not constitute Normal Use, including but not limited to personal injury or property damage arising from misuse of the Product.

4. EXCLUSIONS

Olura is not responsible for any indirect, incidental, special or consequential damages arising out of the use of the Product, whether arising from an electrical issue or otherwise; except as determined by law. Some US States do not allow the exclusion or limitation of incidental or consequential damages, so the above limitation or exclusion may not apply to you.

This warranty does not cover:

- Accident, misuse, abuse, neglect or alterations
- Servicing by unauthorized persons
- Contact with any products other than Olura products
- Use with unauthorized accessories
- Normal wear and tear, including chips, scratches, abrasions, discoloration or fading
- Any other conditions beyond our control

DISCLAIMER

Olura, LLC doesn't assume any responsibility of liability for any damages, physical or otherwise, or injuries resulting, directly or indirectly, from the use of the Eno™ device or Olura product line. Users of the Eno™ and, included Olura products, do so at their own risk. Olura, LLC reserves the right to revise this publication from time to time without obligation of notifying any person of such updates or changes.

DISPOSAL INFORMATION

The Eno™ contains a lithium battery. Please do not dispose with other household waste when discarding. Recycle responsibly to promote the sustainable use of material resources. Avoid harming the environment or human health by ensuring that uncontrolled waste disposal does not occur. For details regarding environmentally safe recycling locations, users should contact their local government office.

FCC STATEMENT

NOTE: This device complies with Part 15 Subpart B of the FCC Rules. Operation is subject to the following two conditions: (1) this device may not cause harmful interference, and (2) this device must accept any interference received, including interference that may cause undesired operation. These limits are designed to provide reasonable protection against harmful interference in a residential installation. This equipment generates, uses and can radiate radio frequency energy and, if not installed and used in accordance with the instructions, may cause harmful interference to radio communications. However, there is no guarantee that interference will not occur in a particular installation. If this equipment does cause harmful interference to radio or television reception, which can be determined by turning the equipment off and on, the user is encouraged to try to correct the interference by one or more of the following measures:

Reorient or relocate the receiving antenna.

Increase the separation between the equipment and receiver. Connect the equipment into an outlet on a circuit different from that to which the receiver is connected. Consult the dealer or an experienced radio/TV technician for help.

US Patent D914,898
International Design Patents, China and EU
Eno™ - Designed and engineered in the USA, manufactured in China.
Olura® Products – Manufactured in the USA
© 2021 Olura LLC, All rights reserved.
Olura® and Eno™ are trademarks of Olura, LLC .