

# Hydrofera Blue CLASSIC

Polyvinyl Alcohol (PVA) Foam Dressings

# Hydrofera Blue READY and READY-Transfer

Polyurethane (PU) Foam Dressings

Antibacterial foam dressings that combine methylene blue and gentian violet to manage bioburden.

## Wound characteristics

- Deep, tunneling or shallow
- With or without devitalized tissue/slough & debris
- Moderate to heavy exudate
- Infected or at risk of infection

## Clinical benefits

- Continuous wicking, highly absorptive
- Safe, autolytic debridement
- Manages bioburden
- Safe, Non-cytotoxic
- Does not inhibit growth factors
- High tensile strength



## Wound characteristics

- Shallow wounds
- Moderate to heavy exudate

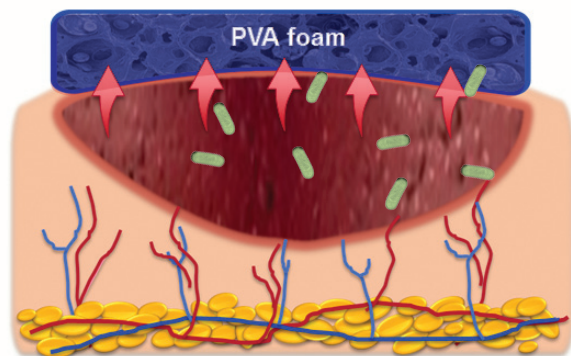
## Clinical benefits

- Up to 7-day wear time
- Safe, Non-cytotoxic
- Does not inhibit growth factors



## Powerful Wicking

- Wicks bacteria laden exudate into the foam and away from the wound surface with natural negative pressure through capillary flow.



## Debridement

- Example of devitalized tissue removed at dressing change.



## Edge Effect

- Multiple authors have noted resolution of epibole or flattening of wound edges with use of Hydrofera Blue CLASSIC dressings.<sup>1-4</sup>



Granulating wound bed with epithelial cells on the edge

## The Safe Non-Cytotoxic Choice

- Ideal for clinicians looking for an alternative to silver dressings
- Less expensive than many silver foam dressings<sup>5</sup>
- Compatible for use with Hyperbaric Oxygen Therapy (HBOT)
- Compatible with Growth factors and enzymatic debriders

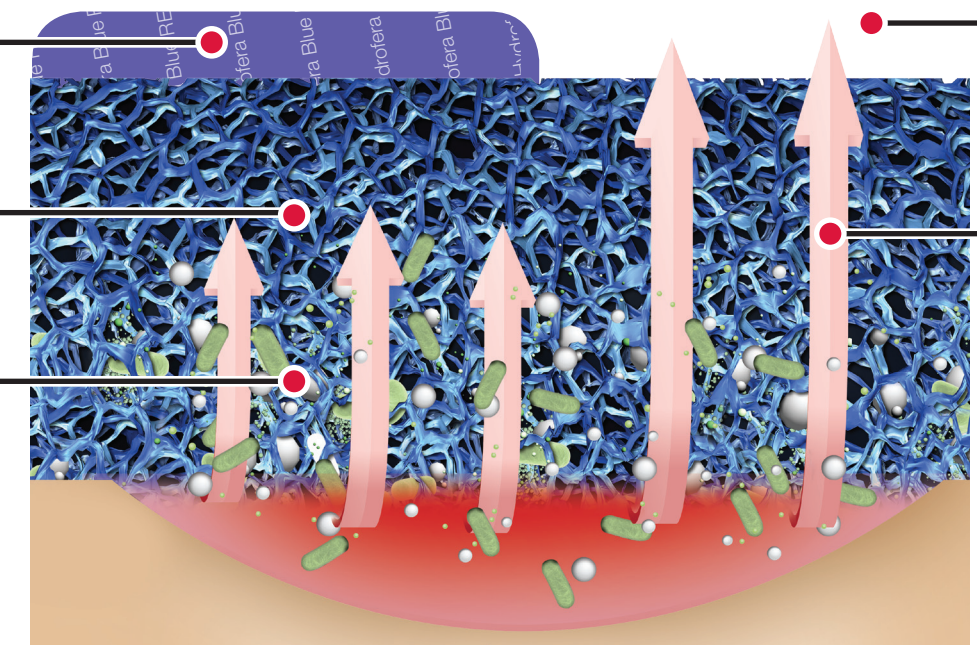
## READY dressing

- Waterproof and bacteria resistant semi-permeable backing

## Broad-spectrum antibacterial protection

## Absorption

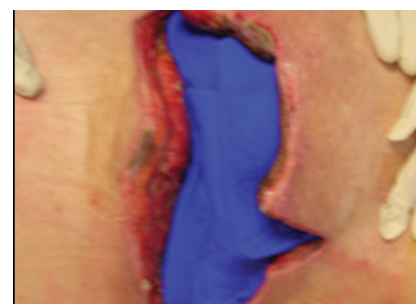
- Absorbs and retains bacteria-laden exudate



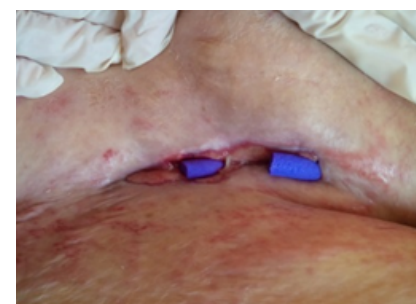
## READY-Transfer dressing

- No-film backing increases exudate management options

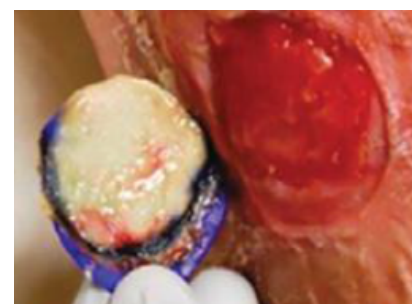
- Exudate is transferred into secondary absorbent dressing



Deep with Heavy Exudate



Tunneling



Removal of Devitalized Tissue



Shallow with Moderate Exudate



Skin Tear Before / After



With Compression / Total Contact Casting

Safe, Effective, Protection from Start to Finish