

P22 FINGERPRINT LOCK



Fingerprint



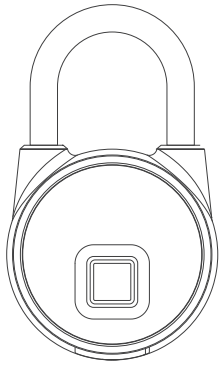
Stand-by Time
9 Months



Waterproof IP66



Security



I .USB Interface:

The product is charged by USB.
Please fully charge the product
for the first time.



Components:

1. Lock Beam
2. LED Light
3. Fingerprint Reader
4. USB Port

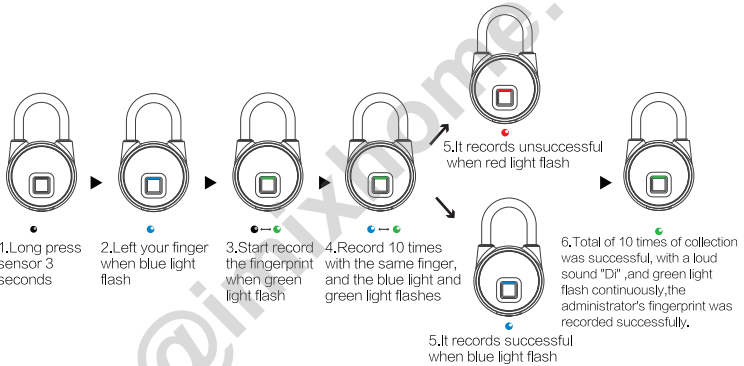
II .Indicator

Use 3-color indicator. Different indicator represents
different devices and status.

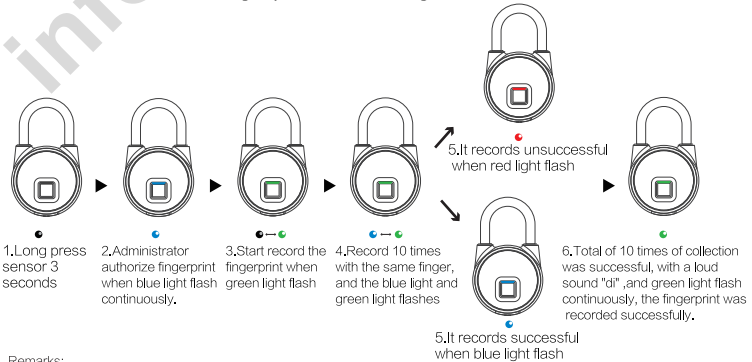
Please check the details as below chart:

Indicator status	Function
Low power	Red light flash
Charging	Red light always on
Full charged	Lights off
Green light flash	Fingerprint collection mode
Green light always on	Successful to collect fingerprint
Blue light always on	Administrator fingerprint authorization
Green light flashes fast	Unlocked successfully
Red light always on	Delete fingerprint mode
Red light flash	Failed to collect fingerprint

III .Description Of First Administrator' s Fingerprint Record



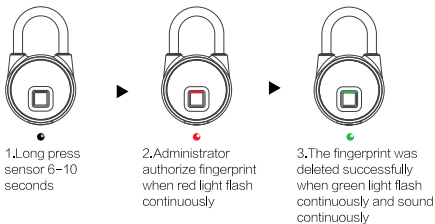
IV .Number 2 to 10 Fingerprint Recording Instructions



Remarks:

1. The first and second fingerprints are the administrator fingerprint by default.
2. Collecting the second to tenth fingerprints requires administrator fingerprint authorization.

V .Description Of Delete Fingerprint



Remarks:

Only the administrator can delete the fingerprint and delete all the fingerprints at once.

VII .Low voltage

When the voltage $\leq 3.5V$, the red indicator flash fast for 15s. If keep in the status of low batter, it will alarming per minute.

VI .Specifications

Support 360 degree angel fingerprint recognize
Resolution: 508DPI
ESD: +/-12kV air, +/-8kV contact
FRR: <1%
FAR: <0.002%
Recognize time: <300MS
Battery: 3.7V 180mAh
Charger: 5V 200MA