



UHF CB HANDHELD RADIO EXG200 USER GUIDE

INTRODUCTION

Thank you for choosing the ECOXGEAR EXG200
2 Watt IP67 Waterproof, Dustproof & Floating UHF CB handheld Radio.
Please read all instructions carefully before using the EXG200.

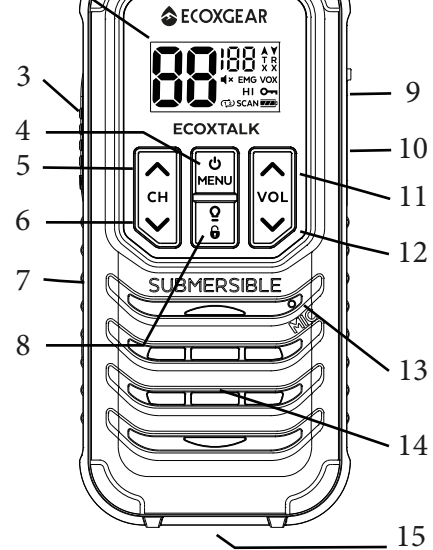
CHECK THE PACK CONTENTS

Please remove radio from its packaging carefully. Ensure that the box has the following items before disposing of the packaging. If any of the items are lost or damaged, contact your place of purchase immediately.

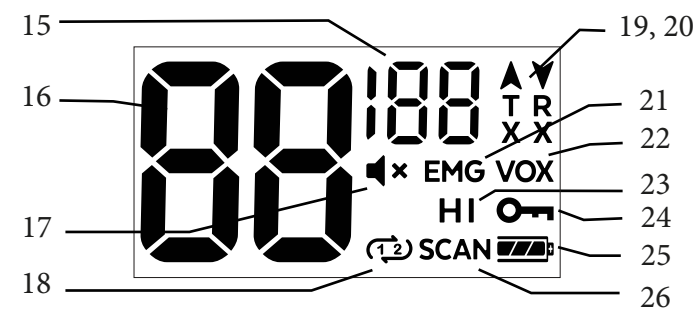
Item	Quantity
EXG200 Radio	Per Pack (1, 2, 3 or 4)
Belt Clip	1 per radio
Batteries (AA NiMH Rechargeable)	3 per radio
Twin Charge Dock	1
USB C Charge Dock Cable	1
USB C-AC Adaptor for Charge Dock	1
USB C-Cig-Lead Adaptor for Charge Dock	1
Earpiece Mic	1 per radio
Soft Carry Case	1
User Guide	1

CONTROLS & KEY FUNCTIONS

1. Antenna
2. LCD Display
3. PTT (Push To Talk)
4. MENU/Select key
Hold: Power ON/OFF
5. Channel/Select UP
6. Channel/Select DOWN
7. Emergency CH Key
Hold: Key Lock ON/OFF
8. Torch ON/OFF
Hold+: Call Alert Function
9. Accessory Jack
10. USB-C Charging Jack
11. Volume UP
Hold: Scan START/STOP
12. Volume DOWN
Hold: Initiate CALL Tone
13. Microphone
14. Speaker
15. LED Torch



LCD Display Description

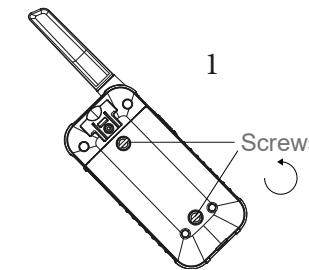


No.	Description
15	01 - 104 Channel silence code indicator 01-50 (CTCSS), 51-104 (DCS)
16	01 - 80 UHF-CB Channel
17	Volume is Muted
18	Dual Channel Mode is ON
19, 20	Transmitting / Receiving
21	VOX VOX Mode is ON
22	EMG Emergency Channel 05 / Channel 35
23	HI TX Power (Hi)
24	Keypad Lock is ON
25	Battery Level Indicator
26	SCAN Scanning is ON

GETTING STARTED

Installing the Battery

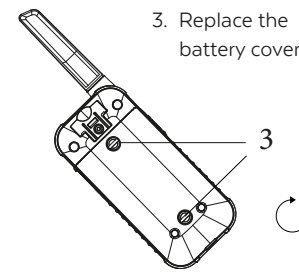
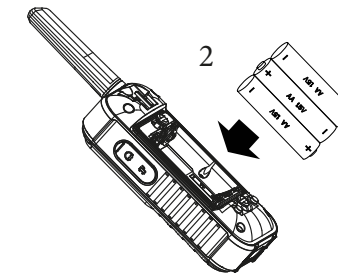
Your radio requires 3 AA Alkaline batteries or 3 AA NiMH Rechargeable batteries (supplied).



1. With the back of the radio facing you, unscrew the two screws of the battery cover to remove.

TIP! Use the screwdriver tip of the belt clip to fasten/unfasten the screws.

2. Install 3 AA Alkaline batteries or 3 AA NiMH rechargeable batteries as shown on the inside of the battery compartment.



3. Replace the battery cover.

Belt Clip

To attach: Slide the belt clip down into the catch until it snaps into place.
To remove: Pinch and hold belt clip latch and slide the belt clip up.

Radio Battery Meter

Battery bars indicate the battery level. When the battery meter shows 1 bar, the device goes into low battery mode and indicates low battery in the form of an alert tone.

- Note:**
1. Only charge NiMH rechargeable batteries.
 2. Do not mix and use old/new/alkaline/NiMH batteries.
 3. Charge only at room temperatures.
 4. Remove the batteries from the radio for storage.
 5. Batteries may corrode over time and cause permanent damage to your devices.
 6. Recharge the NiMH batteries once every 3 months when not in use.

Charging Rechargeable Batteries

You can charge each radio directly via the charge jack, or in the twin charge dock. Connect the USB-C end of the charge cable to the radio charge jack or the twin dock charge jack and the USB end to the USB-C AC adaptor (or USB Cig-lead Adaptor). Plug the AC adaptor into a wall outlet (or Cig-lead adaptor to a vehicle socket).

• Before operating the radio, charge the rechargeable batteries for 16 hours without interruption.

• Do not transmit when the radio is charging.

The changing battery icon on the display indicates the battery is charging.



Low Battery Alert

If the battery level becomes low, the radio will go into a Battery Low Mode. The Transmit Mode is disabled. 2 beeps will sound if PTT is pressed in this condition. Replace Alkaline batteries immediately, or recharge NiMH rechargeable batteries immediately to continue using the radio.

Power Save

Your radio has a unique circuit designed to dramatically extend the life of the batteries. If there is no transmission nor an incoming call within 5 seconds, your radio switches to the Power Save mode. The radio is still able to receive transmissions in this mode.

OPERATION

Power ON/OFF

Press and hold the (MENU) key to turn your radio ON/OFF. When turning on, the radio chirps and the display briefly shows all the display icons before showing the current standby mode of your radio.

Screen Saver

Your radio has an automatic display icon back light which remains on for 10 seconds after a key press (all keys except the PTT key). The back light will work even if the keypad is locked but will not work during low battery alert mode.

The EXG200 has backlit display segments on a black background. When the display backlight turns off, after 10 seconds inactivity, the display will appear off. To remind you that the radio is on, the battery icon will momentarily light up every 10 seconds.

Setting the Volume

Press the (VOL) UP key to increase the speaker volume.
Press the (VOL) DOWN key to decrease the speaker volume.
The speaker volume setting is indicated by 'L'. The volume level range is from 0 (mute) to 7 (maximum). When volume level is 0, the mute icon displays.

Note: Do not hold the radio close to your ear. If the volume is set to an uncomfortable level, it could affect your hearing.

Selecting a Channel

Press the (CH) UP or (CH) DOWN key to select the desired channel. If you press and hold (CH) UP or (CH) DOWN the channel numbers will scroll rapidly. The radio uses the UHF-CB channels (CH01-CH80). See UHF CHANNELS & FREQUENCIES guidelines for channel usage.

Note: For Australia, Channels 05 and 35 are reserved for Emergency Calls.

Talking and Listening

To communicate, all radios in your group must be set to the same Channel (and if it is set, the same CTCSS / DCS Code).

To talk, press and hold the PTT button.



Indicates transmission.

The transmit power can be selected from 2 Watt or 0.5 Watt in the menu. HI displays when the power setting is 2 Watt.

Hold the radio 5 to 7 cm away from your mouth when speaking. (Channels 22 and 23 are for telemetry and telecommand applications, channels 61, 62 and 63 are for future use. TX is inhibited on these channels.)
When you are finished speaking, release the PTT button to listen.

Checking the Channel Before Transmitting

For uninterrupted communication, do not talk on a channel if someone else is currently talking on it.



Indicates a signal is being received.

If a CTCSS or DCS silence code is set, check for activity on a channel before you talk - use the Monitor (ON/OFF) function in the MENU to turn Monitor Mode ON so you can hear the open channel. If you hear static, the channel is clear to use.

Push to Talk Timeout Timer

To prevent accidental transmissions and save battery life, the radio emits a continuous warning tone and stops transmitting if you press PTT for 3 continuous minutes.

MENU List | MENU Settings

Open the MENU - Press the (MENU) key
Step through the MENU - Press the (MENU) key again
Exit the MENU - Press the PTT key

1. CTCSS / DCS Code setting
2. Call Tone Setting
3. VOX setting
4. Dual Watch (2nd Channel) setting
5. Transmit Power Level (Hi/Lo)
6. Monitor ON/OFF setting
7. Duplex Mode (Repeater) setting

1. CTCSS (Continuous Tone Coded Squelch System) /DCS (Digital Coded Squelch)

CTCSS is a feature that allows a group to talk to each other without hearing other users on the same channel. There are 50 CTCSS Codes to choose from.

DCS is a digital extension of CTCSS. It provides 104 extra, digitally coded, squelch codes that follow the 50 CTCSS codes.

1. Set a desired channel to use CTCSS on (example CH 01).
2. Press the (MENU) key once. CTCSS/DCS Code setting flashes.
The code type is indicated as:
ct for CTCSS, **dc** for DCS and **of** for Off (00).
3. Press (CH) UP/DOWN or (VOL) UP/DOWN key to change the selection. 00 (Off), followed by CTCSS 01-50, followed by DCS 01-104.
4. Press the PTT key to save and exit.

Note:

Select 00 (of) to turn CTCSS / DCS off for the selected channel. Channels 05 and 35 are used for emergency channels. CTCSS and DCS will not operate on these two channels.

2. Setting and Transmitting Call Tones

You can transmit different call tones (wake-up tone) to other radios in your group so you can alert them that you want to talk. To set a call tone:

1. Press the **(MENU)** key two times. 'CA' appears on the display. The current call tone setting flashes.
2. Press **(CH)** UP/DOWN or **(VOL)** UP/DOWN key to change and hear the next call tone. There are 5 call tones to choose from (1-5). Set the call tone to 0 to disable the call tone feature.
3. Press the **PTT** key to set the new call tone.

To initiate a Call Tone:

Press and hold **(VOL)** DOWN key to transmit the call tone.

Note: Current regulations require calling tones to be restricted to one transmission per minute. If a second transmission is attempted within one minute, then an error tone will sound.

3. Voice Operated Transmission (VOX)

Transmission is initiated by speaking into the microphone of the radio instead of pushing the PTT key.

1. Press the **(MENU)** key three times. VOX icon will display. The current setting (1-3) will flash.
2. Press **(CH)** UP/DOWN or **(VOL)** UP/DOWN key to select the sensitivity level.
3. Press the **PTT** key to set the new setting.

Note: VOX levels - from 1 (low sensitivity) to 3 (high sensitivity) and 0(Off).

4. Dual (Channel) Watch

Monitor a second channel along with the current channel with this setting.

1. Press the **(MENU)** key four times. **(12)** icon will display. The second channel to be monitored will flash. (OF, 01 - 80) If the setting is OF, then Dual Watch is disabled.
2. Press **(CH)** UP/DOWN or **(VOL)** UP/DOWN key to set the 2nd channel to be monitored.
3. Press the **PTT** key to save the setting and dual watch will be enabled. The second channel will be monitored intermittently.

9

5. Transmit Power

This feature enables you to listen for weak signals on the current channel.

1. Press the **(MENU)** key five times. **Pr** icon will display. The current setting (Hi or Lo) will flash.
2. Press **(CH)** UP/DOWN or **(VOL)** UP/DOWN key to set the transmit power to HI (2 Watt) or LO (0.5 Watt). When transmit power is set to HI, the **HI** icon will show on the display.
3. Press the **PTT** key to save.

6. Monitor

This feature enables you to listen for weak signals on the current channel.

1. Press the **(MENU)** key six times. **M** icon will display. The current setting (ON or OFF) will flash.
2. Press **(CH)** UP/DOWN or **(VOL)** UP/DOWN key to set monitor ON for continuous listening and the receiver circuit will stay open, letting in both the noise & weak signals.
3. Press **(CH)** UP/DOWN or **(VOL)** UP/DOWN key to set monitor OFF and the radio will return to normal receive mode.

7. Duplex Mode (Repeater)

The Duplex function enables you to access local repeater stations. UHF CB Repeaters are used to retransmit or relay your signal. Repeaters will extend the range of your radio and overcome the shielding effect caused by solid obstructions.

Note: You can only activate Duplex on Channels 01-08 and 41-48. When Duplex is ON for a repeater channel, the display shows r1-r8 for Channels 01-08 and n1-n8 for Channels 41-48.

1. Press the **(MENU)** button seven times. 'rP' setting flashes.
2. Press **(CH)** UP/DOWN or **(VOL)** UP/DOWN key to change the change the setting ON or OFF.
3. Press the **PTT** key to save.

10

SPECIAL FUNCTIONS

Scanning Channels

Use scanning to monitor channels for transmissions or to find someone in your group who has accidentally changed channels. To start scanning:

1. Press and hold **(VOL)** UP key and scanning starts. The SCAN indicator displays.
2. Press and hold **(VOL)** UP key again to disable scanning. The SCAN indicator disappears.

When the radio detects channel activity, it stops scanning and you can hear the transmission. To respond to the transmission, press the **PTT** key within 5 seconds, the channel will be confirmed.

Scan Advance

1. If the radio stops scanning on a channel you do not want to listen to, briefly press and release **(CH)** UP or DOWN key to skip the active channel and scanning resumes
2. If the radio repeatedly stops on an undesired transmission, you may temporarily remove that channel from the scan list by pressing and holding **(CH)** UP or DOWN key for 3 seconds. You may remove more than one channel in this way.
3. Removed channels are restored when the radio is powered off then on again.

11

Key Lock ON/OFF

1. To lock the key pad:

Press and hold the Torch/Lock key for 2 seconds until the key lock indicator appears.

2. To unlock the key pad:

Press and hold the Torch/Lock key for 2 seconds until the key lock indicator disappears.

Key Beep ON/OFF

Press and hold the **(VOL)** DOWN key while turning the radio ON to switch the key beep tone ON or OFF.

Roger Beep ON/OFF

Roger Beep is a unique tone added to end a transmission.

Press and hold the **(VOL)** UP key while turning the radio ON to turn Roger Beep ON or OFF.

LED Torch

To use the built-in LED flashlight;

Press the Torch/Lock key to turn the LED Torch ON or OFF.

Note: The torch function will work when radio power is OFF.

Water Activated Torch

The LED torch will activate automatically when the radio is submersed in water.

12

Emergency Call Function (EMG)

(Emergency Channel Call Tone and Radio Alert)

The Emergency Call function will enable automatic visual and audible alerts on the radio and also enable a one-time Call tone on the Emergency channel 05.

To start the Emergency Call function;

Press and hold the EMG key for at least 3 seconds.

1. The Torch light will begin flashing (strobe).
2. The radio will output Call tone 5 through the radio's speaker every 20 seconds.
3. The channel will change to CH05.
4. The radio will transmit Call tone 5 on CH05 one-time only.
5. The radio stays on CH05 listening for any response.

To cancel the Emergency Call Function;

The Emergency Call function's radio alerts,

- the flashing Torch light and

- the Call tone through the radio speaker every 20 seconds,

are cancelled once **EMG** is pressed for 3 seconds.

RESET to Factory Settings

The radio can be reset back to factory settings as follows. Ensure the radio is first turned OFF.

Press and hold the **(CH)** UP while turning the radio ON. The display will temporarily show the software version and then start as normal with the default factory settings restored.

13

UHF CB CHANNEL USAGE

Usage Notice

In Australia, except in an emergency, a CB transmitter shall not be operated on UHF emergency channels 5 and 35 and no voice transmissions are permitted on data (telemetry/telecommand) channels 22 and 23. To meet the Standard voice operation on channels 22 and 23 is inhibited. In the event that additional telemetry/telecommand channels are approved by the ACMA, these channels shall be added to those currently listed where voice transmission is inhibited.

In Australia, channel 11 is the customary calling channel for establishing communication and channel 40 is the customary road vehicle channel.

UHF channels and frequencies

IMPORTANT NOTE: The operation of your UHF radio in Australia and New Zealand is subject to conditions in the following licenses:

In Australia the ACMA Radio communications (Citizen Band Radio Stations) and in New Zealand by MED the General User Radio License for Citizen Band Radio.

Water resistant level.

Note: The radio, with battery cover and accessory/charging jack cover fully sealed, will resist water to the watterproof/submersible IP67 level.

The radio will float with supplied batteries installed and with the battery cover and accessory/charging jack cover fully sealed.



14

WARRANTY

ECOXGEAR EXG200

IMPORTANT:

Satisfactory evidence of the original purchase is required for warranty service.

Please refer to our Enfinity website for any details of warranty durations offered in addition to those contained below.

Warrantor:

The warrantor is Enfinity Pty Limited ABN 80 633 367 987 ("Enfinity").

Terms of Warranty:

Enfinity warrants to the original retail purchaser only that the ECOXGEAR EXG200 ("the Product"), will be free from defects in materials and craftsmanship for the duration of the warranty period, subject to the limitations and exclusions set out below.

Warranty Period:

This warranty to the original retail purchaser is only valid in the country of purchase for a Product first purchased either in Australia or New Zealand and will expire, as indicated below, from the date of original sale.

Product	1 Year without registration. Additional 2 Years with registration.
Accessories	90 Days

If a warranty claim is made, this warranty will not apply if the Product is found by Enfinity to be:

- A. Damaged or not maintained in a reasonable manner or as recommended in the relevant Owner's Manual;
- B. Modified, altered or used as part of any conversion kits, subassemblies or any configurations not sold by Enfinity;
- C. Improperly installed contrary to instructions contained in the relevant User Guide
- D. Repaired by someone other than an authorized Enfinity Repair Agent in relation to a defect or malfunction covered by this warranty; or
- E. Used in conjunction with any equipment, parts or a system not manufactured by Enfinity.

Parts Covered:

This warranty covers the Product and included accessories.

User-generated Data:

This warranty does not cover any claimed loss of or damage to user-generated data (including but without limitation phone numbers, addresses and images) that may be stored on your Product.

15

Statement of Remedy:

If the Product is found not to conform to this warranty as stated above, the Warrantor, at its discretion, will either repair the defect or replace the Product without any charge for parts or service. This warranty does not include any reimbursement or payment of any consequential damages claimed to arise from a Product's failure to comply with the warranty.

Our goods come with guarantees that cannot be excluded under the Australian Consumer Law. You are entitled to a replacement or refund for a major failure and for compensation for any other reasonably foreseeable loss or damage. You are also entitled to have the goods repaired or replaced if the goods fail to be of acceptable quality and the failure does not amount to a major failure.

This warranty is in addition to and sits alongside your rights under either the COMPETITION AND CONSUMER ACT 2010 (Australia) or the CONSUMER GUARANTEES ACT (New Zealand) as the case may be, none of which can be excluded.

Procedure for Obtaining Warranty Service:

Depending on the country in which the Product was first purchased, if you believe that your Product does not conform with this warranty, you should deliver the Product, together with satisfactory evidence of your original purchase (such as a legible copy of the sales docket) to Enfinity. Please refer to the Enfinity website for address details. You should contact Enfinity regarding any compensation that may be payable for your expenses incurred in making a warranty claim. Prior to delivery, we recommend that you make a backup copy of any phone numbers, images or other data stored on your Product, in case it is lost or damaged during warranty service.

ECOXGEAR AUSTRALIA
ENFINITY PTY LTD
Unit 206/27 Mars Rd Lane Cove NSW 2066
Phone number: 1300 883 085
Email address: support@ecoxgear.com.au
Website: ecoxgear.com.au



(C) 2022

16

16