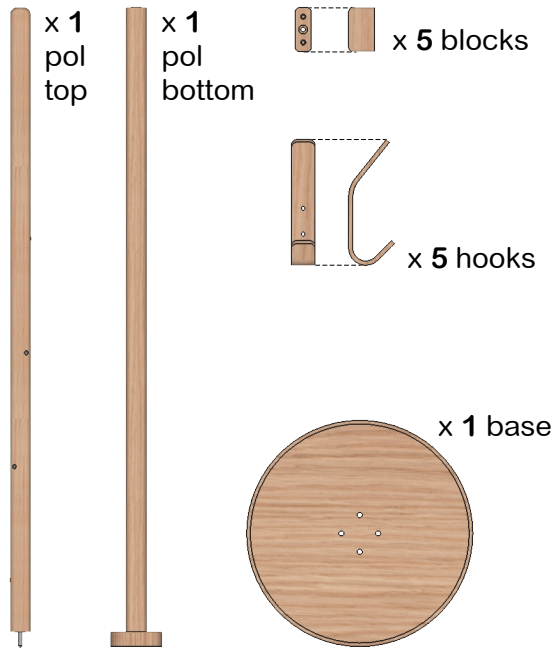


# Thank you for buying 'Right hook - coat stand' Assembly instructions.

## Parts:



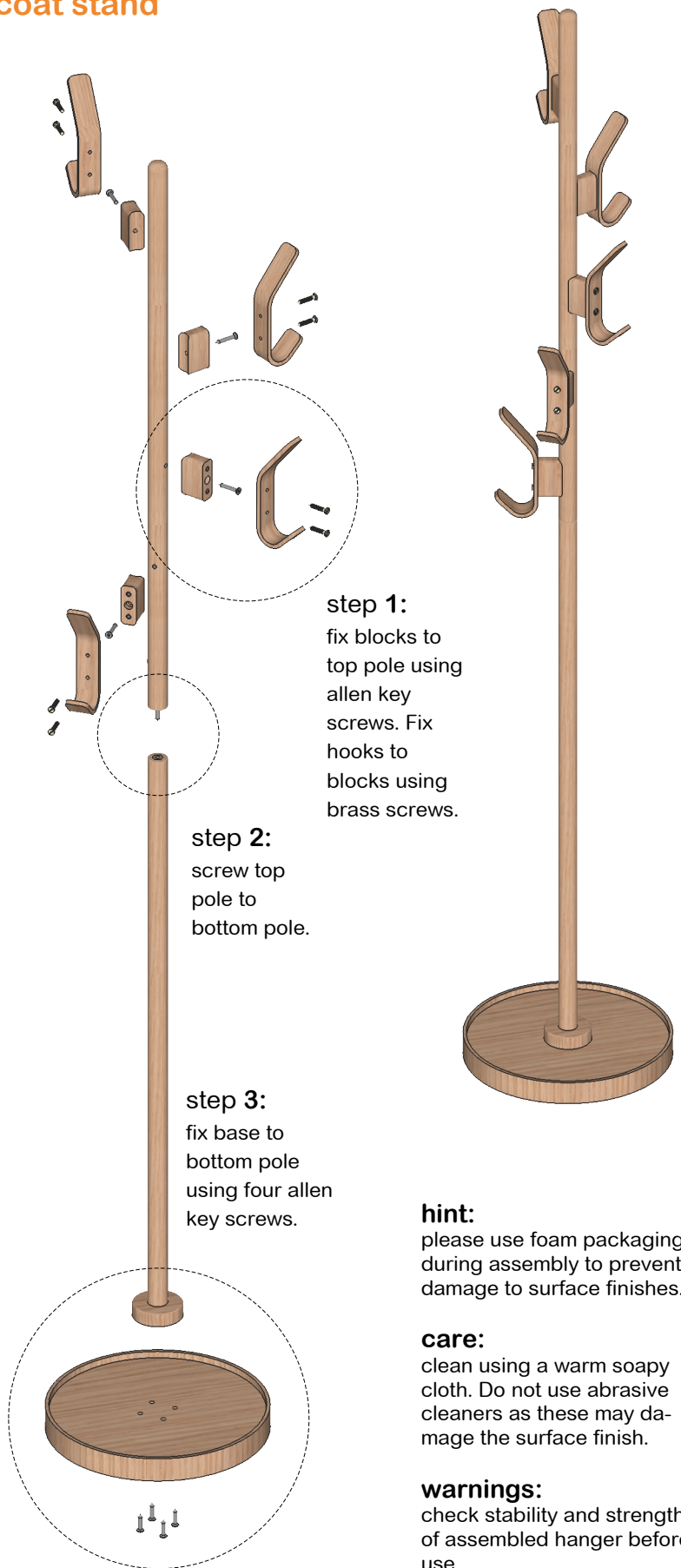
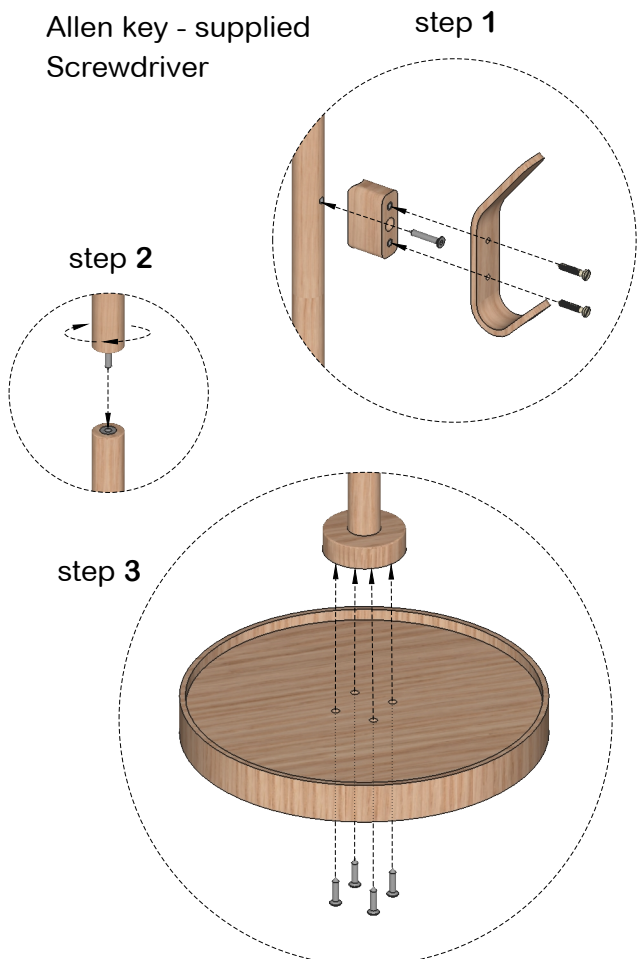
## Fixings:

Allen key screw - x9

Brass screw - x10

## Tools:

Allen key - supplied  
Screwdriver



**hint:**  
please use foam packaging during assembly to prevent damage to surface finishes.

**care:**  
clean using a warm soapy cloth. Do not use abrasive cleaners as these may damage the surface finish.

**warnings:**  
check stability and strength of assembled hanger before use.

do not overtighten screws during assembly.

maximum total load 4kg.  
distribute the load evenly to prevent tipping.

**.wireworks**  
london