



2007-2019 TOYOTA TUNDRA ADAPTER KIT

MODEL #48607

CAREFULLY READ THE FOLLOWING INSTALLATION INFORMATION.

Item no	Description	Included
1	Frame Bracket – Driver Front	1
2	Conical Washer, 1/2"	4
3	Hex Nut, 1/2"-13 UNC, Grade C	4
4	Flat Washer, 5/8"	2
5	Hex Head Bolt, 5/8"-11 x 2", Grade 8	2
6	Frame Bracket – Driver Rear	1
7	Lock Washer, 9/16"	4
8	Hex Bolt, HD, M14-1.5" x 40, Class 10.9	4
9	Conical Washer, 5/8"	2
10	S-Bracket	1
11	Hex Nut, 5/8"-11 UNC, Grade C	2
12	Flat Washer, 1/2"	2
13	Hex Head Screw, 1/2"-13 x 5-1/2", Grade 5	2
14	Strap Bracket	2
15	Carriage Bolt, 1/2"-13 x 5-1/2", Grade 8	4
16	Frame Bracket – Passenger Front	1
17	Frame Bracket – Passenger Rear	1

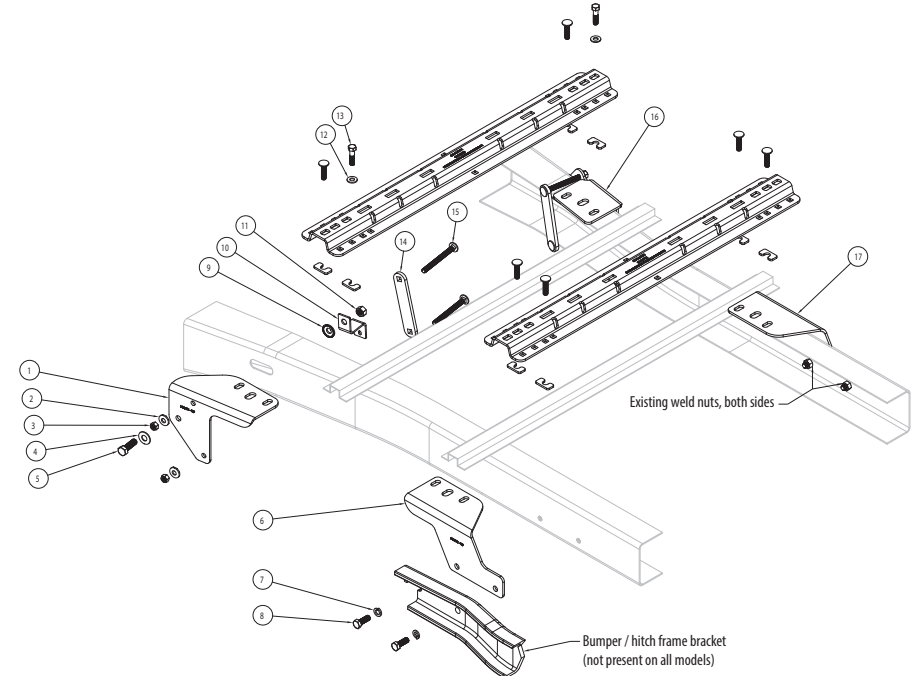
BASE RAILS AND ALL OTHER HARDWARE SHOWN INCLUDED IN PART #48630

Tools Needed

1/8" Drill Bit	12mm Socket/Wrench	3/4" Socket/Wrench	Torque Wrench
9/16" Drill Bit	9mm Socket/Wrench	15/16" Socket/Wrench	

⚠ WARNING ⚠

- Do not install mounting rails over plastic bed liners. Plastic liners must be trimmed away to allow base rails to contact bed directly. Spray in bed liners are acceptable.
- These instructions are guidelines only. Actual installation is the responsibility of the installer and the owner.
- Use only supplied hardware for installation.
- Before beginning installation of mounting rails, brackets, and hitch measure to make sure adequate clearance between the truck and trailer exists to allow for turns.



*WHEN DRILLING HOLES BE AWARE OF RISK TO VEHICLE COMPONENTS.

Installation Instructions

- Lower and remove the spare tire if extra room is required. Remove plastic wheel well liners to allow access to frame.
- To position the driver side front bracket remove existing nut on outside of frame supporting electrical box. Electrical box will be repositioned later using the S bracket.
- If present, pivot the bumper/hitch bracket by loosening the upper rear most bolt and removing the other 5.

CAMCO MFG., INC.

121 LANDMARK DRIVE / GREENSBORO, NC 27409 / USA
1-800-334-2004
WWW.CAMCO.NET

LIMITED WARRANTY: Camco warrants this product to be free from defects in material and workmanship under normal use and service conditions for 12 months from the date of first purchase. Camco's liability is limited solely to the replacement of any defective product returned to us. To the extent allowable by law, Camco makes no other warranty, either expressed or implied, nor assumes any liability for incidental or consequential damages resulting from the use of this product or for breach of warranty of merchantability or fitness for a particular purpose. Submit warranty claims to Camco Manufacturing, 121 Landmark Drive, Greensboro, NC 27409.

CONTINUED ON PAGE 2

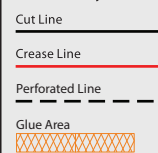
895323 1020504R1 #1119



PRINTING INFORMATION (Do not Print)

Item Name: OEM 5th Wheel Adapter Instructions - Toyota Tundra
New RM#: 895323
Old RM#: na
Drawing #: 1020504
Colors: 1/1 Black
Coating: na
Size: 8.5" x 11"
Stock: 60# or 80# Text
UPC: na
Notes: na
Rev #: 1
Date Released: 1119

ESKO Dieline Key



PSL CutContour

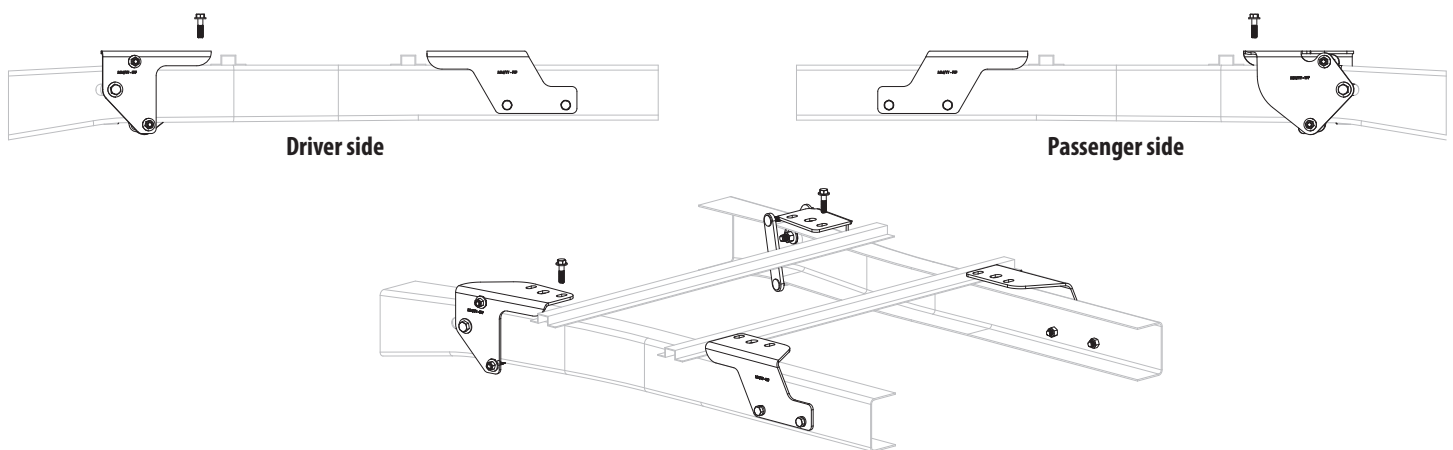
No intentional introduction of Lead (Pb), Cadmium (Cd), Hexavalent Chrome and Mercury (Hg) allowed in manufacture of this packaging material. The sum of the concentration levels incidentally introduced not to exceed 100 PPM by weight.



2007-2019 TOYOTA TUNDRA ADAPTER KIT

MODEL #48607

4. Position rear mounting brackets #6 and #17 along truck frame and pivot bumper/hitch bracket outside the rear frame bracket, loosely install M 14 bolt #8 and lock washer 9/16" #7. Center punch the bed from below through the outer most mounting slots on the rear mounting brackets (2 per bracket).
5. Place the rear mounting rail in the bed of the truck and align with the center punch marks (third hole from each end of the mounting rail). Adjust center punch marks side to side as needed to center the mounting rail in the truck bed. Move the mounting rail out of the way and drill 1/8" * holes through the bed at the center punch locations. From underneath be sure the 1/8" holes line up with the rear frame brackets.
6. Remove rear frame brackets and enlarge the 1/8" holes to 9/16"*. Reinstall Frame brackets.
7. Reposition the mounting rail over the holes and install the mounting rail using the 1/2" x 2" carriage bolts with the U shaped spacer located in the corrugation between the box and the mounting rail or the box and the rear frame bracket to ensure metal to metal contact and to prevent crushing the bed corrugation. Attach with washers and hex nuts and tighten snug to keep the mounting rail from moving.
8. Place the unassembled 5th wheel legs into the already installed mounting rail. Position the front mounting rail with the 5th wheel legs by inserting the tabs into the mounting rail. Push the front mounting rail towards the rear mounting rail to ensure that the 5th wheel will have a snug fit to the mounting rails.
9. Mark and center punch the holes (2nd from each end of mounting rail). Move the mounting rail out of the way and drill 1/8" * holes at the center punch marks.
10. Align the driver side #1 and passenger side #16 front brackets into place along the outside of the truck frame and along the bottom of the truck bed. Align outer most mounting slots with the 1/8" holes and ensure upper and lower hole on the front bracket have clearance below and above the truck frame and the center hole is aligned with the frame slot.
11. Enlarge 1/8" holes with a 9/16" * drill.
12. Attach each front mounting bracket using the bracket strap # 14 and 2 each of the 1/2" X 5/2" carriage bolts #15 and 1/2" conical washer #2 and 1/2" nut #3. Install the 5/8" x 1 3/4" bolt # 5 with flat washer #4 through the front bracket, install the 5/8" conical washer #9, S bracket # 10 (driver side only) and 5/8" nut #11. Hand tighten only.
13. Reposition the mounting rail over the holes and install the mounting rail using (2) 1/2" x 2" carriage bolts and (2) hex screw #13 and washer #12 in the rear side of the mounting rail with the U shaped spacer located in the corrugation between the box and the mounting rail or the box and the rear frame bracket to ensure metal to metal contact and to prevent crushing the bed corrugation. Attach with washers and hex nuts and tighten snug to keep the mounting rail from moving.
14. Reattach the electrical box with existing hardware.
15. Reinstall the bumper /hitch bolts that were removed.
16. Torque all 1/2" hardware to 75ft. lb., 5/8" hardware to 212 ft. lb. and 14M to 122 ft. lb.



CAMCO MFG., INC.
121 LANDMARK DRIVE / GREENSBORO, NC 27409 / USA
1-800-334-2004
WWW.CAMCO.NET

LIMITED WARRANTY: Camco warrants this product to be free from defects in material and workmanship under normal use and service conditions for 12 months from the date of first purchase. Camco's liability is limited solely to the replacement of any defective product returned to us. To the extent allowable by law, Camco makes no other warranty, either expressed or implied, nor assumes any liability for incidental or consequential damages resulting from the use of this product or for breach of warranty of merchantability or fitness for a particular purpose. Submit warranty claims to Camco Manufacturing, 121 Landmark Drive, Greensboro, NC 27409.

