

2011-2017 CHEVY/GMC 2500/3500 ADAPTER KIT

MODEL #48599

CAREFULLY READ THE FOLLOWING INSTALLATION INFORMATION.

Item no	Description	Included
1	Frame Bracket – Driver Side	1
2	Frame Bracket – Passenger Side	1
3	Hex Bolt, M16 x 50mm lg	4
4	Conical Washer, 5/8"	4
5	Hex Bolt w/ Plate, 5/8" x 2"	4
6	Hex Nut, 5/8"	4
7	Wire Leaders, 5/8"	4

BASE RAILS AND ALL OTHER HARDWARE SHOWN INCLUDED IN PART #48630

Tools Needed

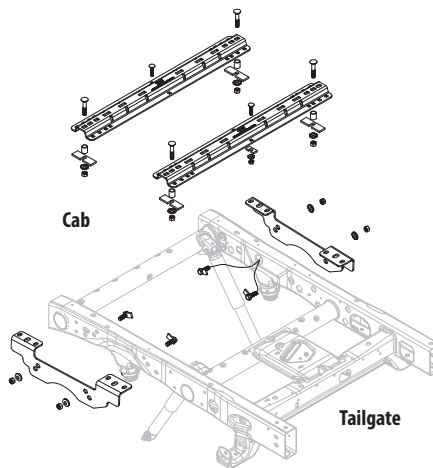
1/8" Drill Bit	11/16" Drill Bit	15/16" Socket/Wrench
9/16" Drill Bit	3/4" Socket/Wrench	24mm Socket/Wrench



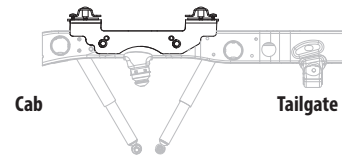
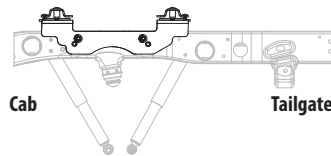
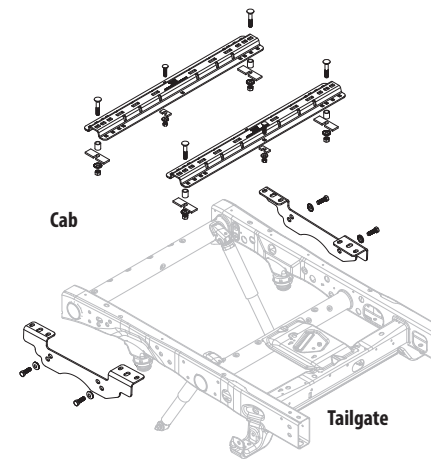
WARNING

- Do not install mounting rails over plastic bed liners. Plastic liners must be trimmed away to allow base rails to contact bed directly. Spray in bed liners are acceptable.
- These instructions are guidelines only. Actual installation is the responsibility of the installer and the owner.
- Use only supplied hardware for installation.
- Before beginning installation of mounting rails, brackets, and hitch measure to make sure adequate clearance between the truck and trailer exists to allow for turns.

2011-2015 Installation



2016-2017 Installation



Installation Instructions

- Lower and remove the spare tire if extra room is required. Remove plastic wheel well liners for access to the frame. Move any electrical or brake components that may interfere with the mounting of the frame brackets.
- 2016 and newer models:** Temporarily install both frame brackets [1 & 2] to the outside surface of the frame using M16 bolts [3] and 5/8" Conical Washers [4] into the existing frame nuts shown. Push both brackets forward toward the cab of the truck as far as they will go. This will help ensure the mounting rail is installed perpendicular to the frame. Center punch the bed from underneath through the center bed rail mounting slot.

2015 and older models: Temporarily install both frame brackets [1 & 2] to the outside surface of the frame using 5/8" Bolt w/ Plate [5], 5/8" Conical Washer [4], and 5/8" Nuts [6]. Thread the wire leaders [7] onto the 5/8" bolts and fish them through the access hole on the inside of the frame rail and out the existing frame holes shown. Attach the conical washers and hex nut to the bolts on the outside of the frame bracket. Push both brackets forward toward the cab of the truck as far as they will go. This will help ensure the mounting rail is installed perpendicular to the frame. Center punch the bed from underneath through the forward center bed rail mounting slot.
- Place the forward mounting rail in the bed of the truck and align with the center punches. Punch marks should align with the outer most 4-bolt rail mounting location. Adjust center punch marks side to side as needed to center base rail in the truck bed. Move the base rail out of the way and drill 1/8" holes through the bed at the center punch locations. From underneath check to make sure the 1/8" holes line up with the frame brackets.

CONTINUED ON PAGE 2

CAMCO MFG., INC.

121 LANDMARK DRIVE / GREENSBORO, NC 27409 / USA

1-800-334-2004

WWW.CAMCO.NET

LIMITED WARRANTY: Camco warrants this product to be free from defects in material and workmanship under normal use and service conditions for 12 months from the date of first purchase. Camco's liability is limited solely to the replacement of any defective product returned to us. To the extent allowable by law, Camco makes no other warranty, either expressed or implied, nor assumes any liability for incidental or consequential damages resulting from the use of this product or for breach of warranty of merchantability or fitness for a particular purpose. Submit warranty claims to Camco Manufacturing, 121 Landmark Drive, Greensboro, NC 27409.

CD895092 1015286R1 #517

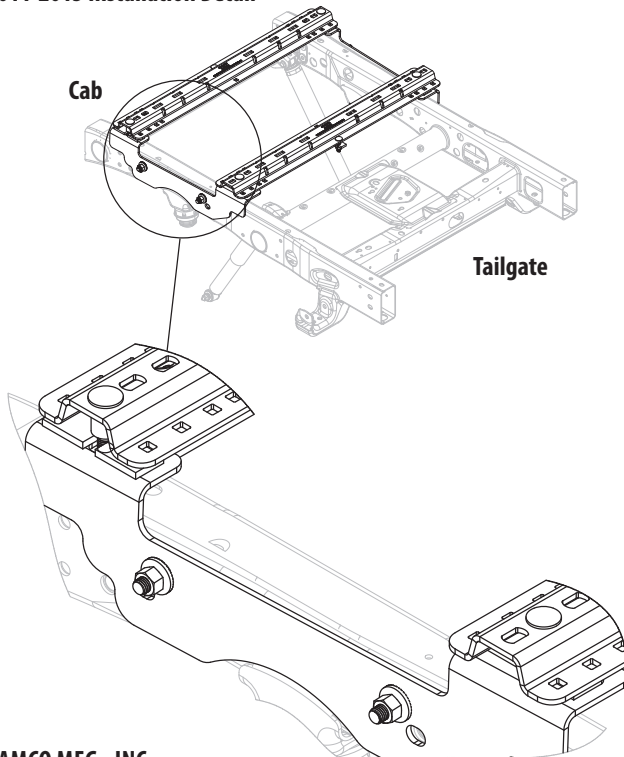
CAMCO

2011-2017 CHEVY/GMC 2500/3500 ADAPTER KIT

MODEL #48599

4. Remove the frame brackets and enlarge 1/8" holes to 11/16". Reinstall the frame brackets and mount forward base rail using 5/8" x 3.5" long carriage bolts, tube spacers, and fill shims, 5/8" conical washers and 5/8" nuts (all hardware supplied in base rail kit). Tube spacer to be installed between base rail and truck bed. Fill shims to be installed in the truck bed corrugation either between frame bracket and truck bed or between base rail and truck bed. Loosely tighten 5/8" nuts at this time.
5. Place the unassembled fifth wheel legs, slider, or gooseneck in the forward base rail. Position the rear base rail by aligning with the fifth wheel legs, slider, or gooseneck. Push the rear base rail toward the forward rail to ensure a tight fit. If the fifth wheel or gooseneck to be used with the truck is not available set up the rear rail 22" on center from the forward rail. Be sure the rear rail is centered between the bed box sides. Center punch in the center of the middle 4-bolt mounting hole on each side of the rear bed rail.
6. Check to make sure the center punch in the bed aligns with the middle rear slot in the frame brackets. Drill 1/8" holes through bed at the center punch locations.
7. Enlarge 1/8" holes to 11/16" being careful not to drill through the mounted frame brackets below. Mount rear base rail using 5/8" x 3.5" long carriage bolts, tube spacers, and fill shims, 5/8" conical washers and 5/8" nuts (all hardware supplied in base rail kit). Tube spacer to be installed between base rail and truck bed. Fill shims to be installed in the truck bed corrugation either between frame bracket and truck bed or between base rail and truck bed. Loosely tighten 5/8" nuts at this time.
8. Install fifth wheel or gooseneck into base rails to ensure proper fit and spacing. Keep fifth wheel or gooseneck installed and final torque all bolts.
 - a. 1/2" hardware to 75 ft-lbs [102 N*M]
 - b. M16 hardware to 150 ft-lbs [204 N*M]
 - c. 5/8" hardware to 150 ft-lbs [204 N*M]
9. 1/2" carriage bolts required in outer most square holes in center of both base rails for all installations. Refer to 48630 instructions for specifics.
10. Replace plastic wheel well liners and spare tires removed at beginning.

2011-2015 Installation Detail



2016-2017 Installation Detail

