



# Z5615-BWL-AM

HET Elongated Wall Hung EcoVantage® Flush Valve  
Toilet with Antimicrobial Glaze

TAG \_\_\_\_\_



## Z5615-BWL-AM Series Elongated

### Option:

- RF Retro-Fit Nut Kit** for extending carrier studs from existing wall.

### Recommended Trim:

- Z5955SS-EL** Elongated, standard white, open front toilet seat less cover with stainless steel check hinge.

### Recommended Carrier:

- Z1201 or Z1202 EZCarry™** 500 lbs load rated High Efficiency Carrier

Note: To ensure system performance:  
Minimum Running Water Pressure = 25 psi



This product should be used with a WaterSense labeled counterpart with a compatible flush volume to ensure that the entire system meets the requirements for water efficiency and performance.

These dimensions and specifications are subject to change without notice.  
Fixture dimensions meet ANSI/ASME standard A112.19.2 and CAN/CSA B45 requirements.  
Meets the American Disabilities Guidelines and ANSI A117.1 requirements when installed per code.

ZURN INDUSTRIES, LLC. ♦ COMMERCIAL BRASS OPERATION  
5900 ELWIN BUCHANAN DRIVE ♦ SANFORD NC 27330  
PHONE: 1-800-997-3876 ♦ FAX: 919-775-3541  
WWW.ZURN.COM  
IN CANADA: ZURN INDUSTRIES LIMITED  
7900 GOREWAY DRIVE UNIT 10 ♦ BRAMPTON, ONTARIO L6T5W6  
PHONE: 905-405-8272 FAX: 905-405-1292



## Z5615 HET Series

- Zurn High Efficiency Toilets and paired performance flush valve systems are designed to exceed industry standards, while using as little as 1.1 gallons of water per flush.
- Universal high efficiency toilet can be specified with 1.1 gpf [4.2Lpf], 1.28gpf [4.8Lpf], 1.6 gpf [6.0 Lpf] or dual flush valves.
- Vitreous china
- Antimicrobial ceramic glaze utilizing SmartSilver™ nanotechnology to create a permanent surface that inhibits the growth of stain and odor causing mold, mildew and bacteria, thus minimizing the need for cleaning chemicals and water to cleanse the bowl.
- Elongated front rim
- 2-1/8" fully glazed trapway
- High efficiency siphon jet flush action
- Shipping Weight: 40 lbs.
- System MaP score of 1,000 grams at 1.28 gpf with Zurn Flush Valve
- Static weight load of 1,000 lbs\*

## Engineering Specification

### Z5615-BWL-AM

**EcoVantage High Efficiency Toilet System**  
Vitreous China, 1.1 gpf [4.2 Lpf] or greater high efficiency wall hung toilet with siphon jet flushing action, antimicrobial ceramic glaze and elongated front rim with 1-1/2" top spud. Universal high efficiency toilet is designed to exceed industry standards with flush volumes of 1.1 gallons per flush or higher.

### Z5616-BWL

**EcoVantage High Efficiency Toilet System**  
Vitreous China, 1.1 gpf [4.2 Lpf] or greater high efficiency wall hung toilet with siphon jet flushing action, antimicrobial ceramic glaze and elongated front rim with integral bedpan lugs and 1-1/2" top spud. Universal high efficiency toilet is designed to exceed industry standards with flush volumes of 1.1 gallons per flush or higher.

\*Not intended for bariatric use

See Zurn One Systems for suggested packages.

Architectural/Engineering Approval



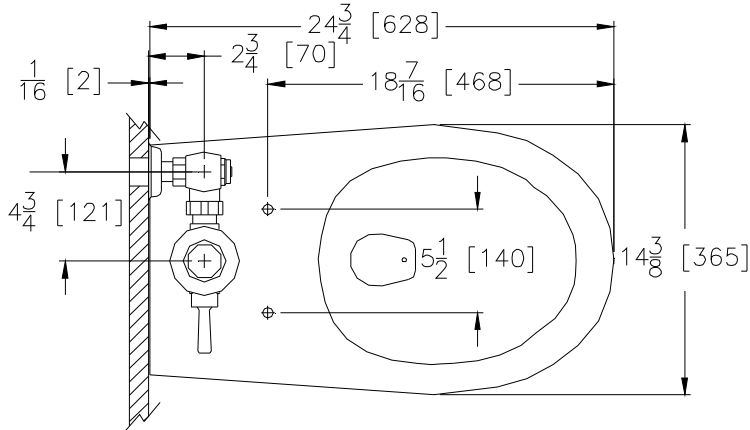
# Z5615-BWL-AM

HET Elongated Wall Hung EcoVantage® Flush Valve  
Toilet with Antimicrobial Glaze

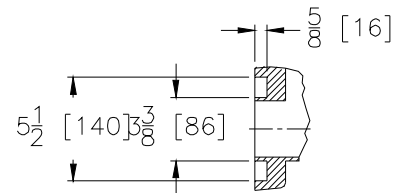
TAG \_\_\_\_\_

## Rough-in dimensions for Z5665 Series

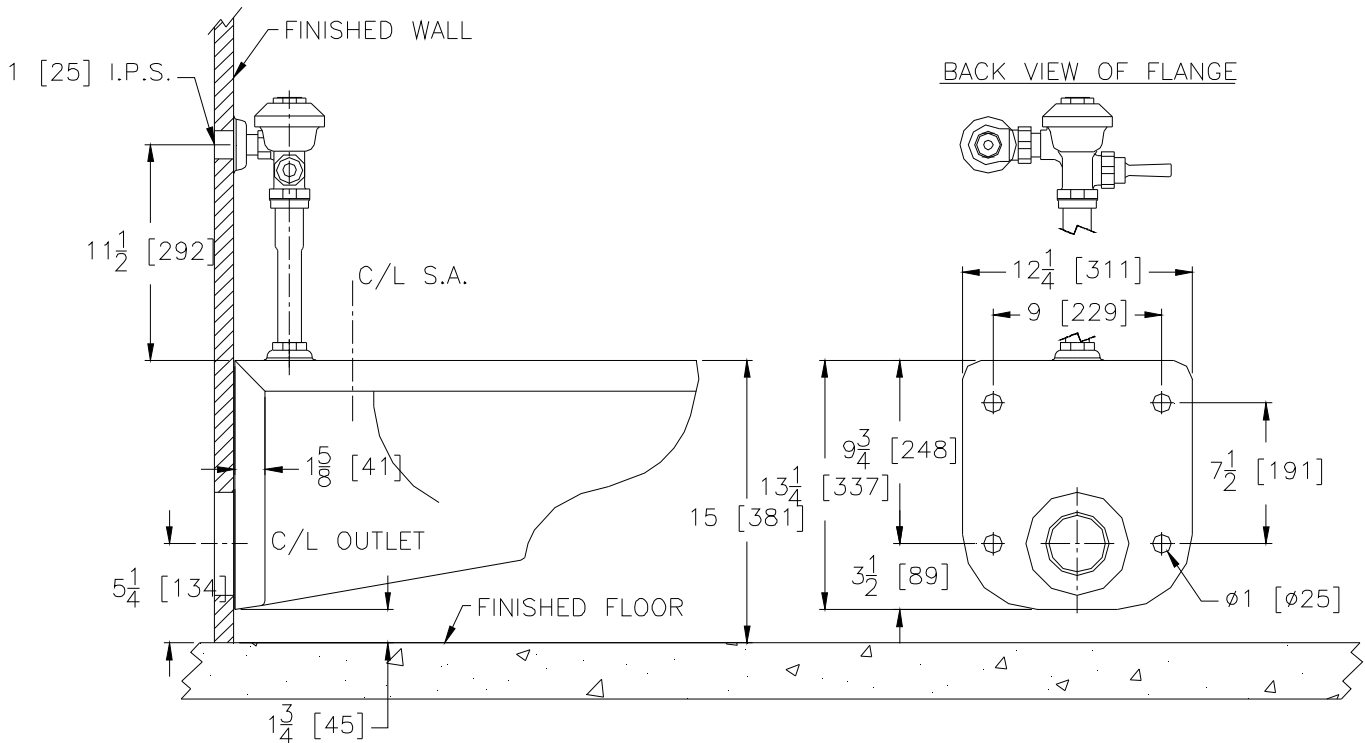
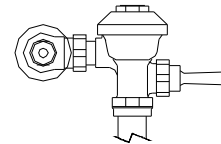
- Z5615-BWL-AM with top spud, shown with Z6000AV-HET valve



SECTION THRU. OUTLET



BACK VIEW OF FLANGE



These dimensions and specifications are subject to change without notice.

Fixture dimensions meet ANSI/ASME standard A112.19.2 and CAN/CSA B45 requirements.

Meets the American Disabilities Guidelines and ANSI A117.1 requirements when installed per code.



ZURN INDUSTRIES, LLC. ♦ COMMERCIAL BRASS OPERATION  
5900 ELWIN BUCHANAN DRIVE ♦ SANFORD NC 27330  
PHONE: 1-800-997-3876 ♦ FAX: 919-775-3541  
WWW.ZURN.COM

IN CANADA: ZURN INDUSTRIES LIMITED  
7900 GOREWAY DRIVE UNIT 10 ♦ BRAMPTON, ONTARIO L6T5W6  
PHONE: 905-405-8272 FAX: 905-405-1292

AquaVantage® is a registered trademark of Zurn Industries, LLC.

Rev. C  
Dwg. No. 310239

Date: 4/20/2017  
Product No. Z5615-BWL-AM