



# PORTABLE OUTDOOR SINK

WITH HOSE ADAPTER AND FOOT PUMP

HCCHH7701C

Thank you for purchasing the Hike Crew™ Portable Outdoor Sink with Hose Adapter and Foot Pump. This User Guide is intended to provide you with guidelines to ensure that operation of this product is safe and does not pose risk to the user. Any use that does not conform to the guidelines described in this User Guide may void the limited warranty.

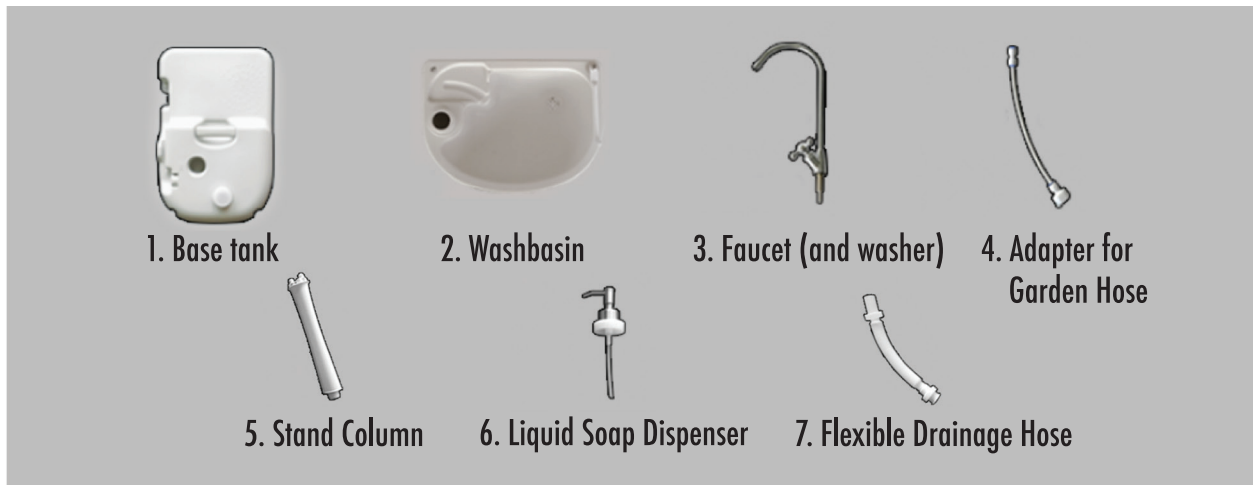
Please read all directions before using the product and retain this guide for reference. This product is intended for household use only.

This product is covered by a limited one-year warranty. Coverage is subject to limits and exclusions. See warranty for details.

## Safety Precautions

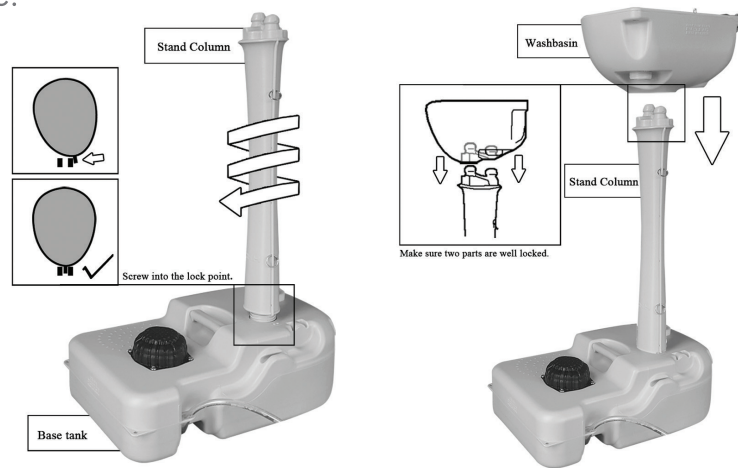
- Please always make sure to assemble this sink according to the instructions contained herein. Do not attempt to modify this unit.
- The base tank can be anchored to the ground if you put ground stakes through the four holes at each corner. Stakes are not included.
- Do not attempt to set up this unit in an area prone to heavy vibrations if you are not anchoring it to the ground with stakes. Otherwise, it may fall over.
- The water from this sink is intended for handwashing or dishwashing only. Please don't drink the water.

# Product Overview

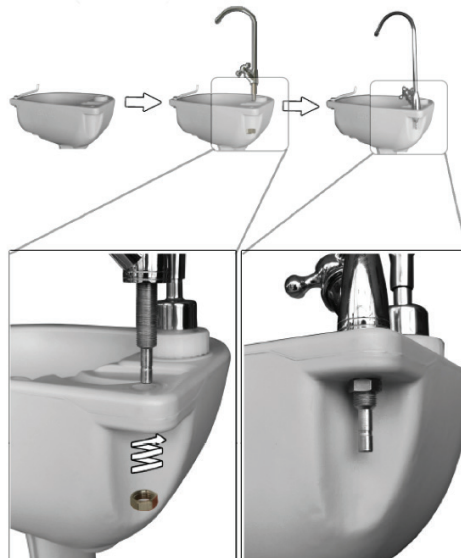


## Assembly Instructions

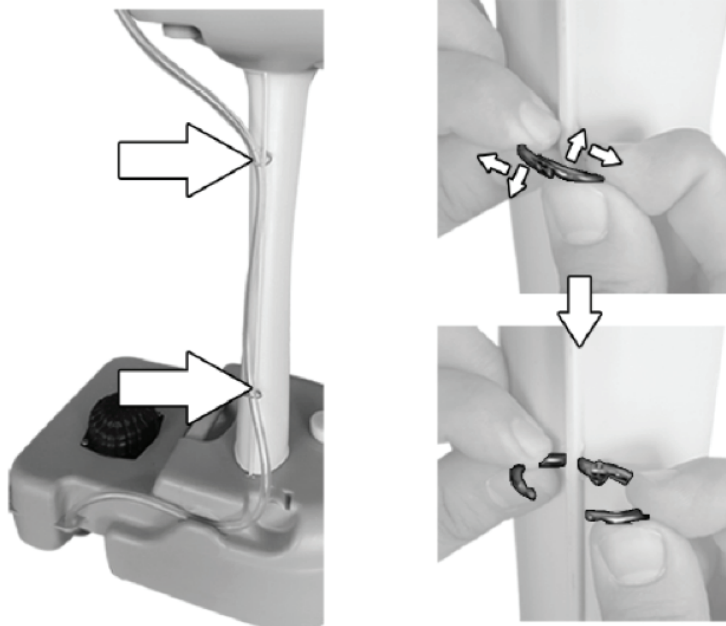
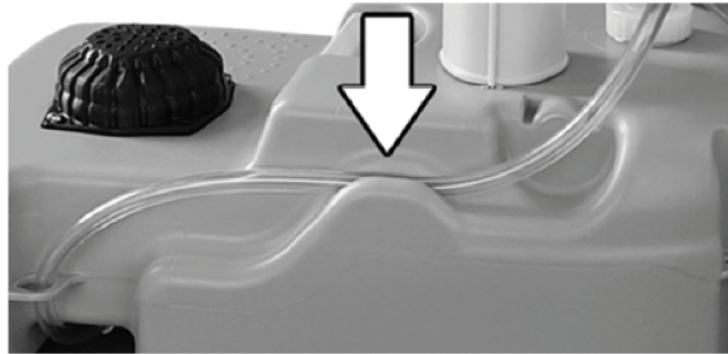
1. Screw the stand column into the base tank.
2. Seat the washbasin on top of the stand column, making sure both connections are firmly locked and secured in place.



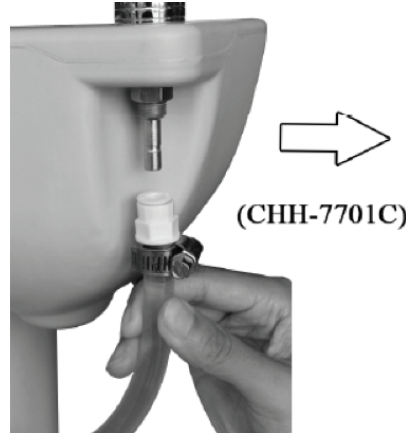
3. Install the faucet on the washbasin by placing it into the designated slot. Fasten the included washer underneath the faucet so that it locks securely into place.



4. Affix the tube for the base tank to the stand column using the included clips and the designated tube slot on the side of the base tank as shown.



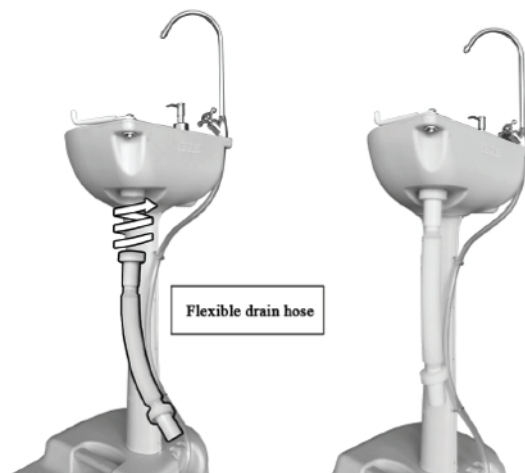
5. Connect the faucet to the adapter for your garden hose via the threading underneath the washer, or to the tube leading from the base tank if you'll be using the water from there.



6. Pour up to 3.2 qt. (3L) of liquid soap (not included) into the tank next to the faucet, then screw the dispenser pump into place.



7. Attach the flexible drain hose to the washbasin at the top, and into a portable water tank or outdoor toilet for used water collection (not included).



## Using Your Portable Outdoor Sink

1. Follow the assembly instructions to set up your outdoor sink, using stakes to secure it in place if necessary.
2. Once the hose is attached to the faucet and the drainage hose is connected, make sure the water supply to the hose is turned on. If you'll be using the base tank as the water supply unit, make sure that it has been filled with water as shown. The tank holds up to 5 gal. (19 L) of water. Do not overfill the tank.
3. Use the knob on the faucet to control the flow of water. If you're using the base tank to supply the water, you'll need to step on the black pump in the center to push water to the faucet. You can now use the liquid soap dispenser to wash hands or dishes in the sink.



4. If connected via the hose adapter, the faucet will provide a continuous flow of water until you turn the knob back or shut off the water supply to the hose. If using the base tank, you'll need to step on the foot pump when you need more water.

## Specifications

Base Tank Capacity: 5 gal. (19L)

Liquid Soap Dispenser Capacity: 3.2 qt. (3L)

## Questions? Concerns? Contact Hike Crew™

Should you experience any problems with your product, please contact us before returning the item to the place of purchase. We're here to help!

[info@supportcbp.com](mailto:info@supportcbp.com)

1 833-855-1816

Hike Crew is a trademark of C&A IP Holdings, LLC, in the U.S.

All other products, brand names, company names, and logos are trademarks of their respective owners, used merely to identify their respective products, and are not meant to connote any sponsorship, endorsement or approval

Distributed by: C&A Marketing Inc. 114 Tived Lane East Edison, NJ 08837 USA. Made in China.

© 2018. C&A IP Holdings, LLC. All Rights Reserved.