



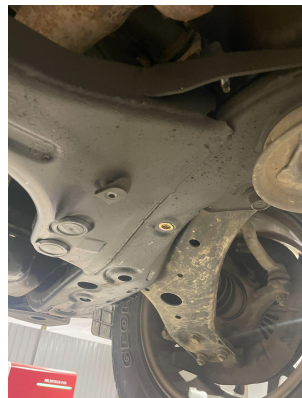
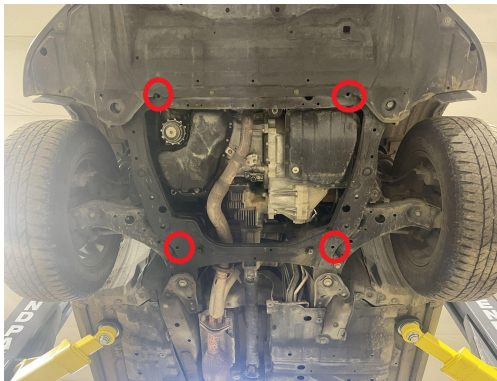
ANDERSON DESIGN & FABRICATION

2008-2013 Toyota Highlander Skid Plate Install

Tools Required

1. 10mm Socket and Ratchet
2. ½" Socket
3. Threaded Insert Tool ⅜"

1. Remove Factory Skid plate 10mm socket
2. There are 4 points where we will be installing threaded insert into the frame to mount the new skid plate to circled in RED. Depending on size of holes, they may need to be enlarged to meet the diameter of the threaded insert. On the front 2, you may need to trim a little plastic out of the way to clear the new spacers when installed.



- 3.
4. Install Skid plate with 1.25" aluminum spacer in the front, 1" in the rear. Corresponding hardware Longer hardware with washer in the front, smaller hardware with washer in the rear.

Any questions during insall let us know,

Anderson Design & Fabrication
5035750034