

## IMPORTANT SAFETY INSTRUCTIONS

When using electrical appliances, especially when children are present, basic safety precautions should always be followed, including the following:

### FOR HOUSEHOLD USE ONLY

**READ ALL INSTRUCTIONS BEFORE USING—SAVE THESE INSTRUCTIONS**

#### **WARNINGS: KEEP AWAY FROM WATER.**

#### **CAUTION: POSSIBLE SHARP SURFACES**

**DANGER** — As with most electrical appliances, electrical parts are electrically live even when the switch is off.

#### **⚠️WARNING**

To reduce the risk of death by electric shock:

1. Always unplug the unit immediately after using.
2. Do not use while bathing.
3. Do not place or store appliance where it can fall or be pulled into a tub or sink.
4. Do not place in or drop into water or other liquid.
5. If an appliance falls into water, unplug the unit immediately. Do not reach into the water.

#### **⚠️WARNING**

To reduce the risk of burns, electrocution, fire, or injury to persons:

1. An appliance should never be left unattended when plugged in. When the appliance is used in a bathroom, unplug it after use since the proximity of water presents a hazard even when the appliance is switched off.
2. If the supply cord is damaged, it must be replaced by the manufacturer, its service agent or similarly qualified persons in order to avoid a hazard.
3. This appliance is not intended for use by persons (including children) with reduced physical, sensory or mental capabilities, or lack of experience and knowledge, unless they have

been given supervision or instruction concerning use of the appliance by a person responsible for their safety.

4. Children should be supervised to ensure that they do not play with the appliance.
5. Use this appliance only for its intended use as described in this manual.
6. Never operate this appliance if it has a damaged cord or plug, if it is not working properly, or if it has been dropped, damaged, or dropped into water.
7. Keep the cord away from heated surfaces.
8. Do not wrap the cord around the appliance.
9. Never block the air openings of the appliance or place it on a soft surface, such as a bed or sofa, where the air openings may be blocked. Keep the air openings free of lint, hair, and the like.
10. Never use on someone who is sleeping.
11. Never drop or insert any object into any opening.
12. Do not use outdoors or operate where aerosol (spray) products are being used or where oxygen is being administered.
13. Do not use an extension cord with this appliance.
14. Do not direct hot air toward eyes or other heat-sensitive areas.
15. Do not place appliance on any surface while it is operating.
16. While using the appliance, keep your hair away from the air inlets.

17. Do not operate with a voltage converter.
18. Only use the appliance with the voltage, frequency and power shown on the rating label on the product.
19. Do not use this appliance on hair extensions or wigs unless recommended by the hair extension or wig manufacturer.
20. If hair styling product is being used in conjunction with this appliance please read and follow all of the hair styling product safety warnings and instructions before use.
21. Do not use if appliance is dropped. Dropping the unit can expose or damage heated metal plates that may result in the risk of burns from contact with hot surfaces or laceration from contact with broken sharp surfaces/edges.
22. Do not use if damaged. Inspect the appliance for exposed heated metal plates or sharp edges before use. Using a damaged unit may result in the risk of burns from contact with hot surfaces or laceration from contact with broken sharp surfaces/edges.
23. This appliance has hot areas. Use caution when using this appliance to avoid injury.
24. For additional protection, the installation of a residual current device (RCD) having a rated residual operating current not exceeding 30 mA is advisable in the electrical circuit supplying the bathroom. Ask your installer for advice.

## SAVE THESE INSTRUCTIONS

**SCAN QR CODE FOR FULL INSTRUCTIONS, GUARANTEE INFORMATION, AND HOW-TOS**

For accessories and replacement parts, visit [sharkclean.com.au](http://sharkclean.com.au) or [sharkclean.co.nz](http://sharkclean.co.nz)



**DO NOT USE THIS DEVICE IN A BATHTUB, SHOWER, OR WATER-FILLED RESERVOIR.**



## TWO (2) YEAR LIMITED GUARANTEE

---

The warranty commences on the date of purchase and expires at the end of the two-year period. In the unlikely event of a defect due to faulty materials or workmanship within the guarantee period we will replace the defective/faulty part with a new product, free of charge, or if the unit is deemed defective/faulty we replace the unit with an equivalent or upgraded model, at our discretion.

For warranty claims, you will need to submit a proof of purchase in the form of a valid receipt that displays date and place of purchase.

### **Your warranty is subject to the following conditions**

- DO NOT operate the appliance with a damaged plug or cord, or if the unit has been dropped, damaged or dropped in water.
- To avoid the risk of electric shock, do not disassemble or attempt to repair the appliance on your own. If the supply cord is damaged, it must be replaced by a qualified electrician to avoid a hazard. Incorrect re-assembly or repair can cause a risk of electric shock or injury to persons when the appliance is used.
- The item has not been misused, abused, neglected, altered, modified or repaired by anyone.
- The item has been subjected to fair wear and tear.
- The item has not been used for trade, professional or hire purposes.
- The item has not sustained damage through foreign objects, substances or accident

### **Customer costs within warranty**

The customer is responsible for any inwards freight charge to return a product for warranty if requested, and outward freight charge for warranty parts and/or replacement unit.

### **Who is covered?**

This warranty applies only to the original purchaser, who bought the product from an authorised retailer and may not be transferred. Proof of purchase is required.

### **What is not covered?**

- Filters and brush rolls
- Accessories supplied with the item.
- Components that are subject to natural wear and tear caused by normal use in accordance with operating instructions.
- Unauthorised/improper maintenance/handling or overload is excluded from this warranty.
- Accidental damage
- Damage as a result of use not in accordance with the rating plate
- Removal of blockages. If a blockage does occur please refer to the trouble shooting guide within your Shark Operating manual
- Use of parts and accessories that are not genuine Shark components

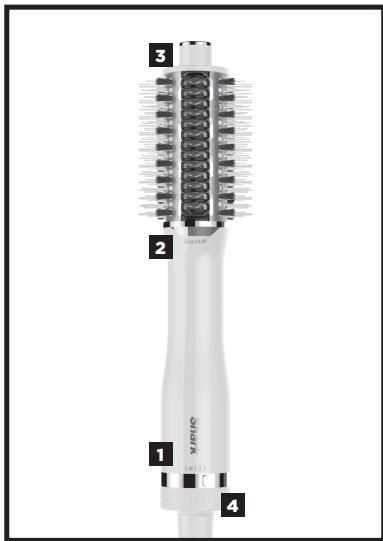
## OPERATING INSTRUCTIONS

1. Adjust the settings by sliding the ring at the bottom of the unit. Choose from off, low air temperature, medium air temperature, high air temperature and smoothing mode. Only use smoothing mode on dry hair.
2. When in smoothing mode, the heated smoothing combs heat indicator light is yellow while the heated smoothing combs are heating up, and green when they are hot and ready to use.
3. Hold onto the cool-touch tip for more control during styling.
4. Do not cover or block the inlet air filter during use.

**For further operating instructions, please consult the Styling Guide or scan the QR code.**

### **Storage, Cord Safety, and Maintenance/Cleaning:**

- Ensure the cord is not knotted, twisted, or wrapped around any nearby objects when in use.
- Store the unit in a dry location away from water and other heat sources. To help prevent bristle damage, store the unit so the bristles are not touching any surfaces. Ensure the heated smoothing combs have completely cooled before storing the unit.
- Clean the inlet air filter at the bottom of the unit monthly. To clean the filter, make sure the unit is off and unplugged, then use a new toothbrush to brush off any dust or debris on the filter.
- To help maintain performance, remove any hair from the brush after every use.



# TROUBLESHOOTING & ERROR CODES

---

## MAINTENANCE/CLEANING

### Reduction in airflow.

Make sure you are not covering the filter cover with your hand when operating the unit. This will block the air inlet, which could cause a reduction in airflow. A change in airflow or air power, airflow blockages, and/or visible buildup on the inlet at the bottom of the unit could also indicate your unit needs to be cleaned. To maintain performance, a new clean and dry toothbrush can be used and stored for cleaning the filter at the bottom of the unit every month.

Please **scan the QR code** for additional troubleshooting or contact Customer Service at **AUS: +61 2 8801 7666 I**  
**NZ: +64 800 112 660.**



## Mann&Noble Pty Ltd

Building D, 33 Quarry Road  
Erskine Park, NSW, Australia, 2759  
AUS: +61 2 8801 7666  
NZ: +64 800 112 660  
[www.sharkbeauty.com.au](http://www.sharkbeauty.com.au)  
[www.sharkbeauty.co.nz](http://www.sharkbeauty.co.nz)

