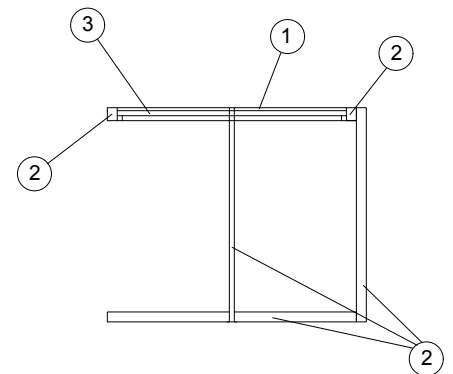


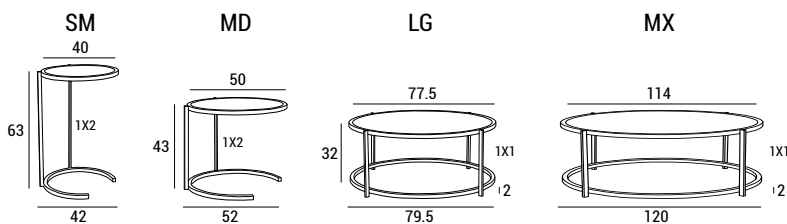


Teti, la collezione di tavoli è composta di tre eleganti elementi, da usare singolarmente o combinati. Piani in ceramica o marmo riflettente, struttura in metallo con finiture verniciate o galvaniche.

- 1 - piano in ceramica, spessore 6 mm;
- 2 - base in metallo verniciato;
- 3 - piana di sostegno in legno.



DIMENSIONI

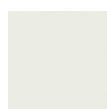


FINITURE STRUTTURA METALLO

Di serie / Standard



RAL 9003



RAL 9016



RAL 9010



RAL 7035



RAL 9006



RAL 9005

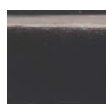
CROMATO LUCIDO



OTTONATO LUCIDO



CANNA DI FUCILE LUCIDO



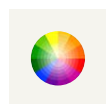
OTTONATO BRUNITO SATINATO



CROMATO SATINATO



RAL COLORE A SCELTA



Optional

FINITURE CERAMICHE



BRECCIA



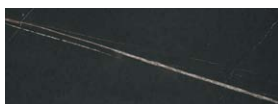
GRIS



NOISETTE



EMPERADOR



SAHARA NOIR

FINITURE MARMO



BIANCO CARRARA



BIANCO CALACATTA



CAPPUCCINO



MORESCO IMPERIALE





NOIR SAINT LAURENT



NERO MARQUINA

INFORMAZIONI TECNICHE

		
TETI SM	21	0.12
TETI MD	24	0.12
TETI LG	34	0.21
TETI 120	47	0.48