



# INSTALLATION INSTRUCTIONS

Product: Max Tire Clearance Kit

Part Number: JKS8300

Applications: Ford Bronco, 2021

517-278-1226 • jkstech@ridefox.com • www.jksmfg.com  
491 W. Garfield Avenue, Coldwater, MI 49036

## Welcome

CONGRATULATIONS on purchasing a Max Tire Clearance Kit from JKS Manufacturing. We are committed to providing you with the best products available and your satisfaction is our first priority.

PLEASE READ these Installation Instructions carefully, and save them for future reference, as they contain important installation and maintenance information.

## Important

**REPLACE BODY MOUNTS ONE SIDE AT A TIME, one of the brackets that is removed during this installation supports the intercooler, if both sides are removed, the intercooler is no longer supported and is more susceptible to damage during installation.**

**FRONT OF THE BODY MUST BE SUPPORTED WHILE BODY MOUNT IS REMOVED, this product requires the front most body mounts to be removed and replaced, to avoid damage to the body, the front section of the body must be supported with a jack during installation.**

**REFER TO FACTORY SERVICE MANUAL for information and procedures not covered in these instructions.**

## Tools Required

- Hydraulic Floor Jack and Jack Stands
- Metric Socket Wrench Set
- Metric Combination Wrench set
- #2 Phillips Screwdriver
- Pliers
- Trim Removal Tool
- Utility knife or scissors
- Reciprocating Saw or Cut Off Wheel & Grinder
- Torque Wrench

## Parts

Part	Description	QTY
<b>05165</b>	High Clearance Body Mount - DRV	1
<b>05166</b>	High Clearance Body Mount - Pass	1
<b>05191</b>	Intercooler Spacer Ring	2
<b>05193</b>	High Clearance Liner Brkt - Drv	1
<b>05194</b>	High Clearance Liner Brkt - Pass	1
<b>05195</b>	Outer Fender Liner Clip Tab - Drv	1
<b>05196</b>	Outer Fender Liner Clip Tab - Pass	1
<b>BP1030</b>	Fender Liner Clips	2

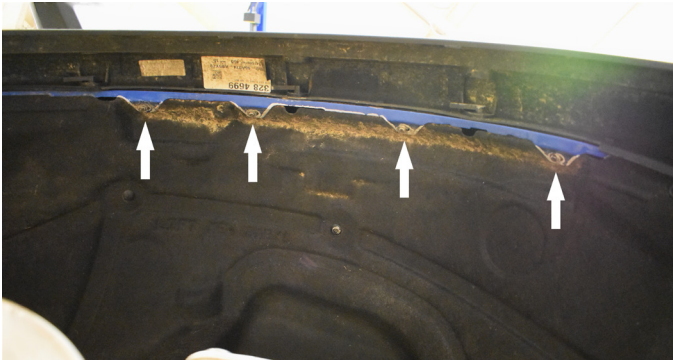


**High Clearance Body Mount - Installed**

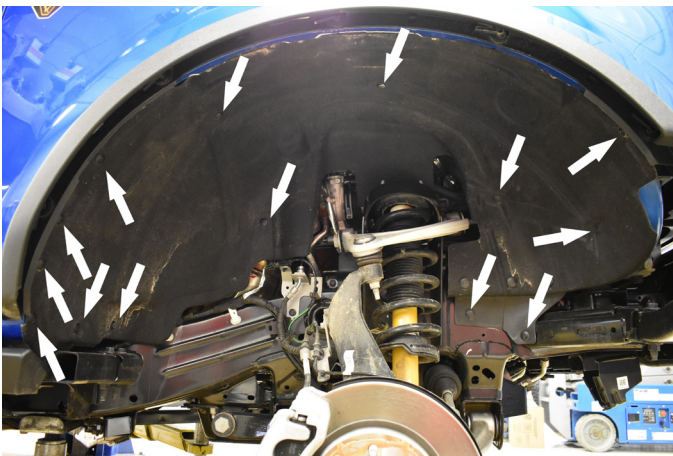
## Installation

### ❑ 1. REMOVE FRONT TIRES AND INNER FENDER LINER

- Park vehicle on a clean, flat surface and block the rear wheels for safety.
- Raise and support the front of the vehicle chassis with jack stands positioned on the frame rails to allow suspension to fully droop.
- Remove both front wheels from the vehicle.
- Using a 7mm socket remove the 4 bolts that mount the fender liner to the fender.



- Using a #2 phillips screwdriver and the trim tool, carefully remove all the trim clips that hold the inner fender liner in place.



- The rubber flap on the front bottom of the fender liner can be trimmed along the dashed line as shown below.



- Once all bolts and clips are removed, carefully remove the inner fender liner from the vehicle, save all hardware and liners as these will be reinstalled later.

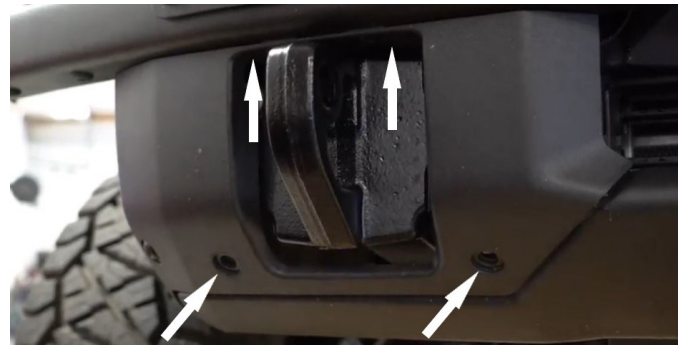
### ❑ 3. FRONT BUMPER AND SKID PLATE REMOVAL

#### ❑ Models with the Modular Steel Bumper

- IF your bumper has parking sensors you will need to unplug the bumper harness from the vehicle. This plug is located at the driver side front corner as shown below.



- Using a trim removal tool, remove all 8 of the retainer clips from the plastic trim surrounding the recovery hooks.



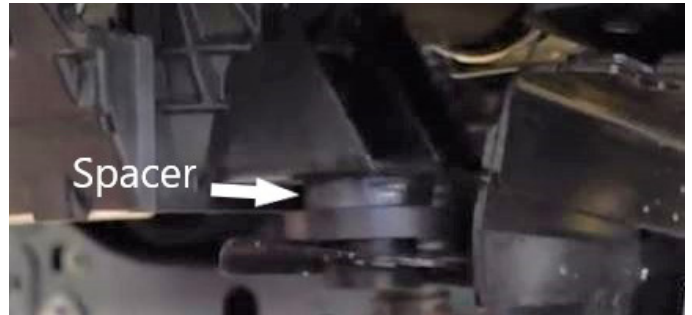
- Once all clips have been removed, carefully remove the trim piece on both sides to reveal the bumper mounting bolts.
- With the help of an assistant, support the bumper while removing bumper mount bolts from each side as shown below, retain all hardware and bumper assembly.



- Once the bumper is removed, using a 15mm socket remove the 4 bolts mounting the steel skid plate as shown below. Retain factory hardware and skid plate.



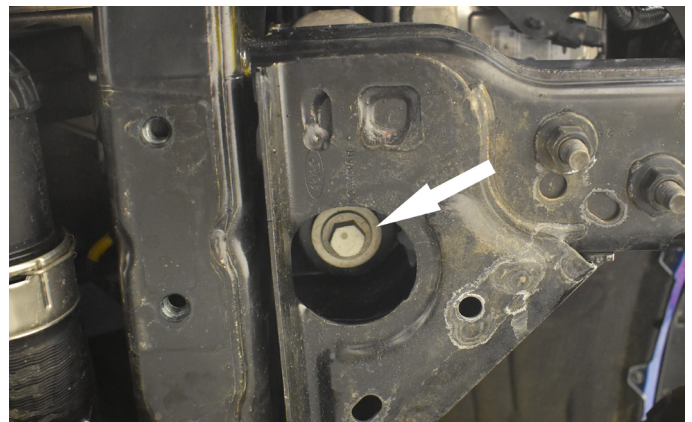
- Carefully remove the bracket from the intercooler.
- Once the metal bracket is off, carefully remove the bushing from the mounting post on the intercooler.
- Install the intercooler spacer ring (05191) on top of the bushing, then re-install the bushing onto the intercooler as shown below.



#### □ Models with the Plastic Bumper

- IF your bumper has parking sensors you will need to unplug the bumper harness from the vehicle. This plug is located at the driver side front corner.
- Using a trim tool, release and remove the 12 trim clips from the trim panels.
- Once all clips have been removed, carefully remove the trim piece on both sides, models with parking sensors will require the sensors in the trim piece to be disconnected to completely remove the trim panel from the vehicle to reveal the bumper mounting bolts.
- With the help of an assistant, support the bumper while removing bumper mount bolts from each side, retain all hardware and bumper assembly.
- Once the bumper is removed, using a 15mm socket remove the 6 bolts mounting the plastic undershield on. Retain factory hardware and plastic undershield.

- Locate the front most body mount bolt as shown below, and use an 18mm socket to remove it and the lower body mount bushing. Retain hardware and bushing to be re-installed later.

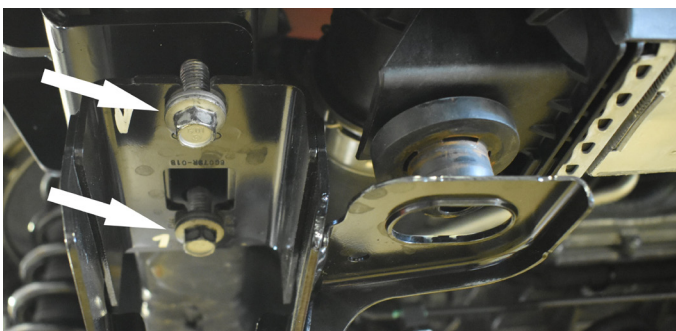


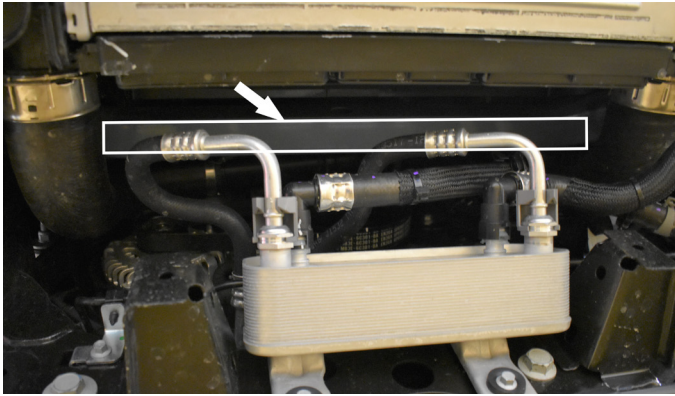
- After the body mount bolt has been removed, use a jack to support the body by lifting on the lower radiator support between the frame rails as shown below. Place the jack closer to the side you are working on and not in the center of the support. Lift until the weight of the body is completely off of the body mount.

**NOTE:** The radiator support will be the same color as the exterior of your Bronco. Be extremely careful when lifting the front of the body to not lift more than necessary and ensure that your lifting apparatus is not contacting any other components like the radiator, intercooler or auxiliary transmission cooler.

#### □ 4. HIGH CLEARANCE BODY MOUNT INSTALLATION

- Working on one side at a time, using a 15mm socket, remove the intercooler bracket to the frame as shown below. Retain factory hardware and bracket.





- Locate where the body mount bracket is connected to the frame at the front of the bracket as shown with the dashed line below.



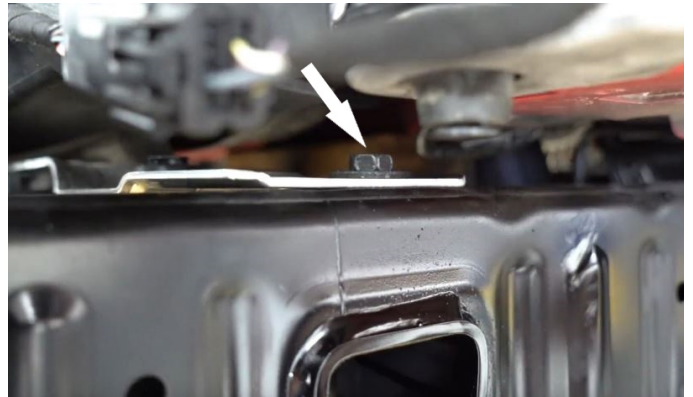
- Using your reciprocating saw or other cutting tool of choice, carefully cut through the square tube parallel to the frame rail and as close to the frame/weld as possible as shown below. Retain the upper body mount bushing and sleeve, discard body mount bracket.

**NOTE:** When cutting the body mount bracket off be careful not to cut into the frame rail.



- Once the body mount is removed, additional grinding may be required to ensure the remaining tube sticking out of the frame does not protrude more than 1/4" from the frame.
- Paint exposed metal to prevent corrosion

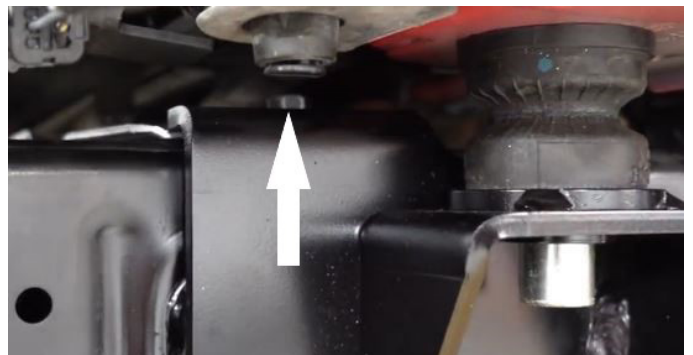
- Locate the bolt holding the upper intercooler mount on top of the frame as shown, using a 15mm wrench, remove this bolt and leave the aluminum intercooler mount in place.



- Install the upper body mount bushing into the new body mount (DRV-05165, Pass-05166).
- Install the new body mount assembly over the frame with the top tab on top of the aluminum intercooler support and the lower tab aligned with the bolt holes for the lower intercooler mount as shown.



- Install the upper intercooler mount bolt through the new body mount bracket and intercooler support as shown below, hand tighten all the way until the bolt makes contact with the bracket. Do not tighten at this time.



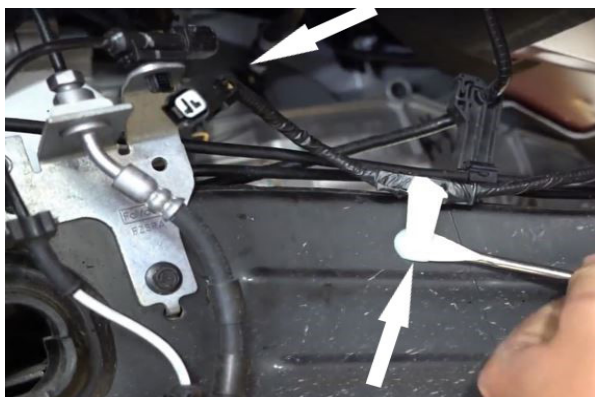
- Locate the lower intercooler bracket and factory bolts, carefully push bracket onto intercooler isolator until fully seated, then install the 2 factory bolts, torque to 59ft-lbs.
- Once lower bolts are tight, torque upper bolt to 35ft-lbs.
- Once the body mount assembly is tightened onto the frame, the body can now be lowered onto the body mount bushing.
- After the weight of the body is back on the bushing, sleeve and body mount bolt can be reinstalled and torqued to 59ft-lbs.
- Repeat process on other side of vehicle.

#### □ 5. HIGH CLEARANCE FENDER LINER BRACKET INSTALLATION\

- Locate the plastic structure on the rear of the fender well. Remove the 3 bolts shown below carefully remove the plastic structure by lifting up and pulling simultaneously. Retain factory hardware and discard plastic structure.



- Once the plastic structure is removed the passenger side is ready for cutting of the frame bracket. On the driver's side, disconnect the ABS sensor from the plug on top of the frame rail.
- Using a trim tool unclip the trim clips from the frame rail as shown below to release the ABS wire and harness from the frame and around the body mount to clear space around the frame bracket.



- Using a 15mm wrench or socket remove the 2 bolts holding in the frame bracket extender as shown below. Discard the tube and hardware.



- Carefully cut the frame bracket off as close to the frame rail as possible as shown below



- Clean up burs on the cut portion and paint to prevent corrosion.
- Once cutting and painting is completed, reinstall the electrical harness to its original location with all the clips and reconnect the ABS sensor.
- Using the factory bolts, mount the new high clearance fender liner brackets (Driver: 05193 &

05195, Pass: 05194 & 05196) as shown below.  
Torque bolts to 15ft-lbs



- Once the fender liner brackets are installed, carefully put the inner fender liner back in place. Begin fastening it with the 4 factory top screws on the fender, leave screws loose.
- Install all of the plastic trim clip starting at the front and work towards the back installing the clips into the high clearance bracket last through the factory holes in the liner.
- Once all the OE clips are in carefully punch another 1/4" hole through the fender liner using a sharp hole punch or a hot bolt to line up with the outer liner clip bracket as shown below. Use provided trim clip to fasten fender liner to new bracket.



- Once all plastic clips are installed, tighten the 4 screws that connect the liner to the fender. Torque to 15in-lbs.

## ❑ 6. BUMPER AND SKID PLATE INSTALLATION

### ❑ Models with Modular Bumper and Steel Skid Plate:

- With the help of an assistant, hold the bumper in place and install the factory mounting hardware Torque bolts to 81ft-lbs.

- Models with parking sensors will need to reconnect the bumper harness at the front left corner of the vehicle.
- Locate the 2 trim panels and snap them into place
- Once snapped into place push all 8 trim clips back into place.
- Locate the front skid plate, install using factory hardware. Torque hardware to 22ft-lbs.

**NOTE:** With the rear bolts partially installed the skid plate can be slid over them to support it while installing the front two bolts.

### ❑ Models with Plastic Bumper and Plastic Undershield

- With the help of an assistant, hold the bumper in place and install the factory mounting hardware Torque bolts to 81ft-lbs.
- Models with parking sensors will need to reconnect the bumper harness at the front left corner of the vehicle.
- Locate the 2 trim panels, models with parking sensor will need to reconnect the sensors at this time, carefully snap the trim panels into place
- Once snapped into place, push all 12 trim clips back into place.
- Locate the plastic undershield, install using the 6 factory bolts, torque hardware to 124in-lbs (10 ft-lbs)

## ❑ 7. POST INSTALLATION

- Double check all fasteners for proper torque
- Check all fasteners after 500 miles

---

©2019 JKS Manufacturing, Inc & Aftermarketing, LLC  
Revision Date 1/27/2022