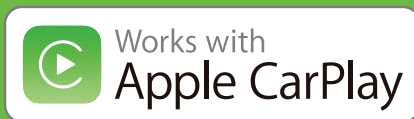


GRUNDIG

GX-3800 User Manual

6.8"

Multimedia
Receiver



android
auto

Initial Setup



Select your Language then press the **Finish** button.

TIPS

This step only needs to be performed with initial setup.

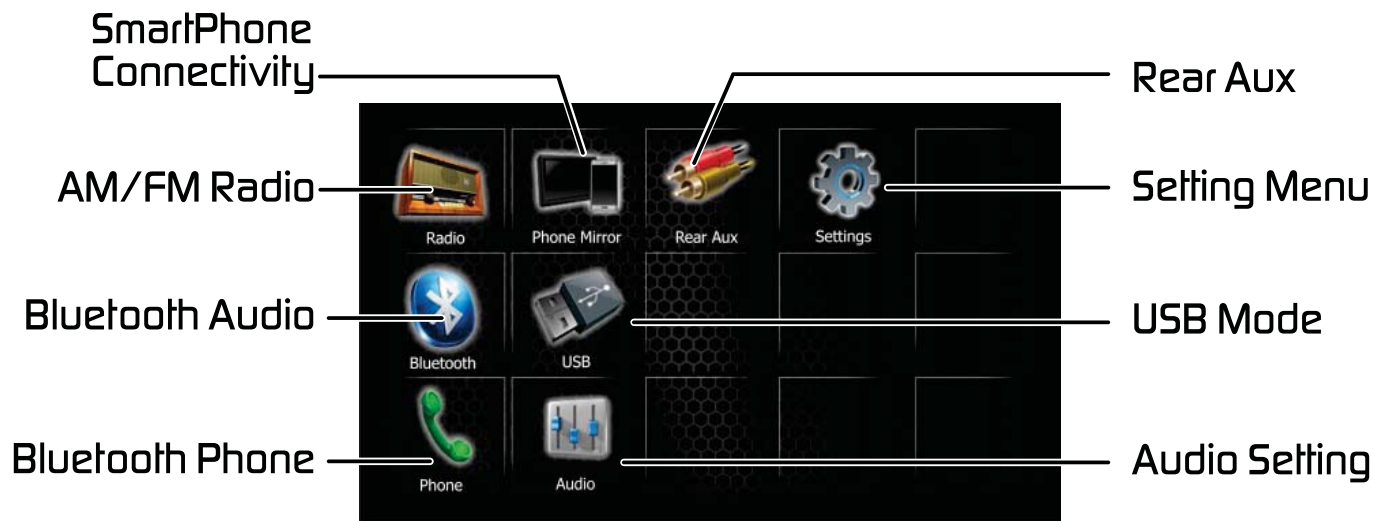
Unit Overview

◆ Button Functions

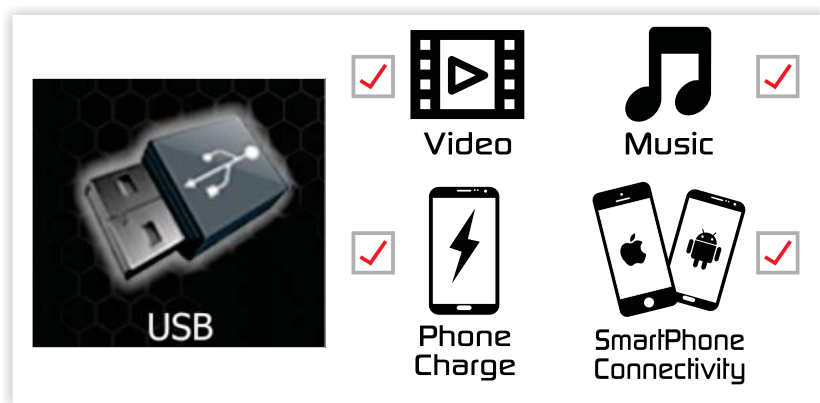


Unit Overview

◆ Home Screen

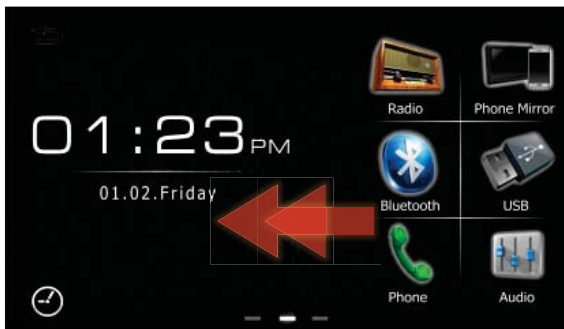


◆ USB Supported Modes



Unit Overview Cont.

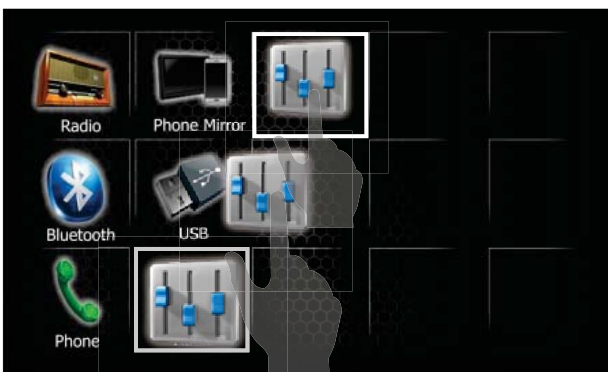
◆ All Sources



Swipe left to display All Sources



◆ Favorite Sources



Tap and hold the icon and drag it to the priority area



Swipe left/right to display/hide

◆ Widget



Swipe right to display widget



Tap  or  return to Now Playing mode

Radio Operation

Station Information

Hold: Auto Seek
Press: Manual Seek

Station Presets

Change Band (AM/FM)

Radio Setup

- Radio Setup
- Auto Store
- Local Seek
- RDS

The screenshot shows a radio interface with a yellow box highlighting the station information area (FM1 87.50 MHz, P 01). Below the screen, a control bar contains icons for Station Presets, Previous, FM1, Next, and Radio Setup. A circular inset shows the Radio Setup menu with options: Radio Setup, Auto Store, Local Seek, and RDS.

Radio Presets

Tap and hold to store station Presets

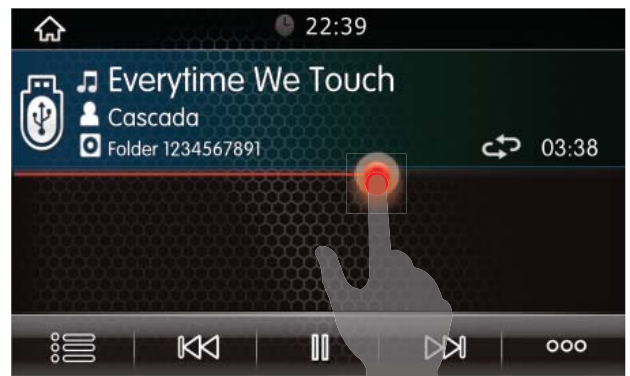
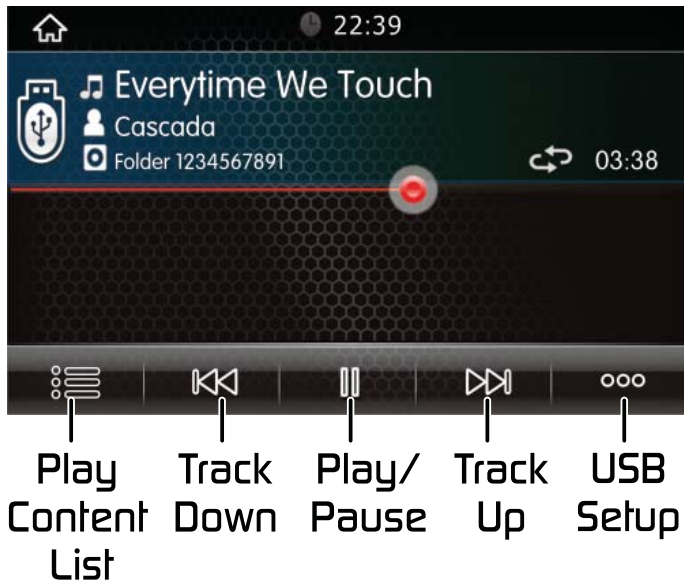
The screenshot shows the radio interface with a yellow box highlighting the preset list. A hand icon is shown tapping and holding the first preset (1 87.50). The preset list contains the following frequencies:

1 87.50	2 89.50	3 96.10	4 102.10
5 108.00	6 87.50	7 89.50	8 98.50
9 106.50	10 88.50	11 107.30	12 107.80

TIPS

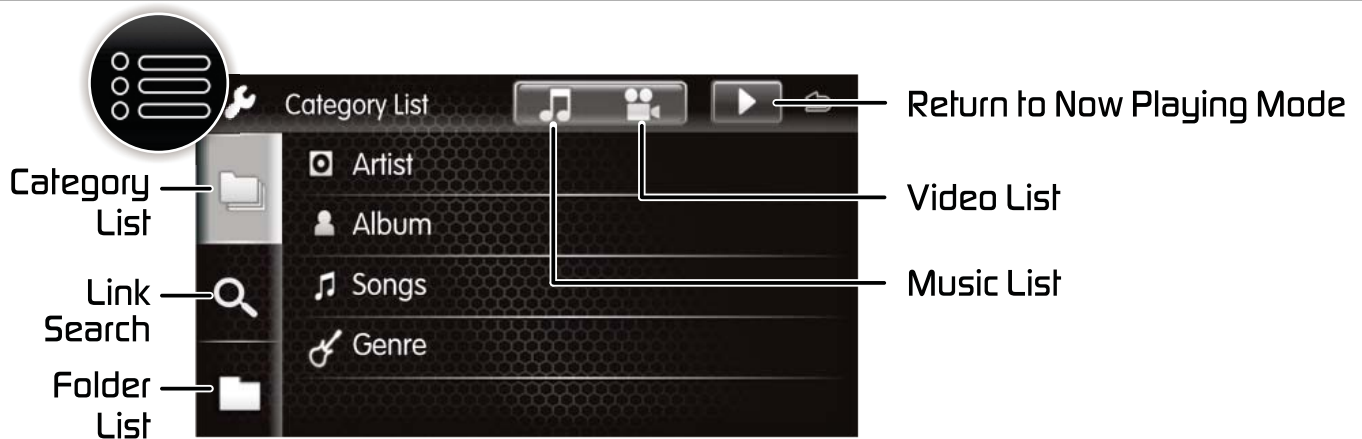
Tap  to display the Preset list, tap again to hide.

USB Media Operation

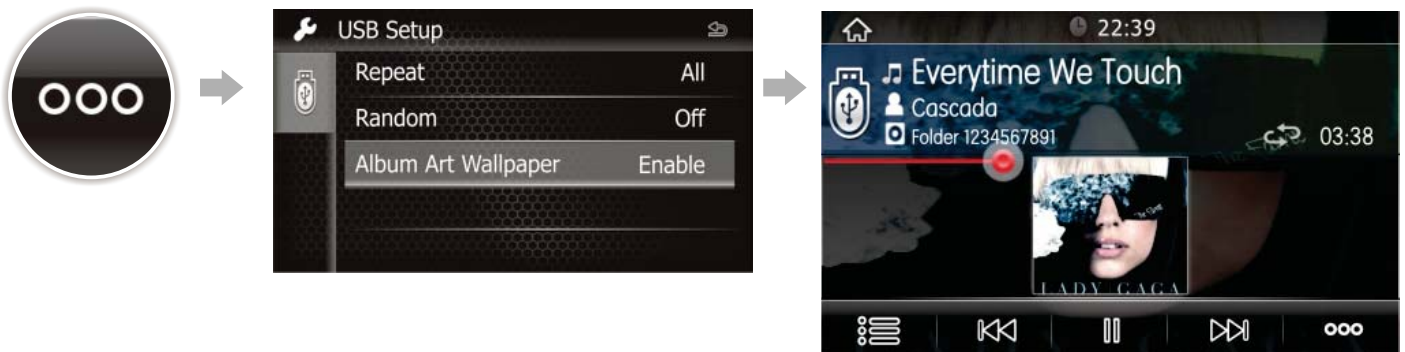


Drag to Fast Forward/Backward

USB Media Content List



USB Album Art Wallpaper



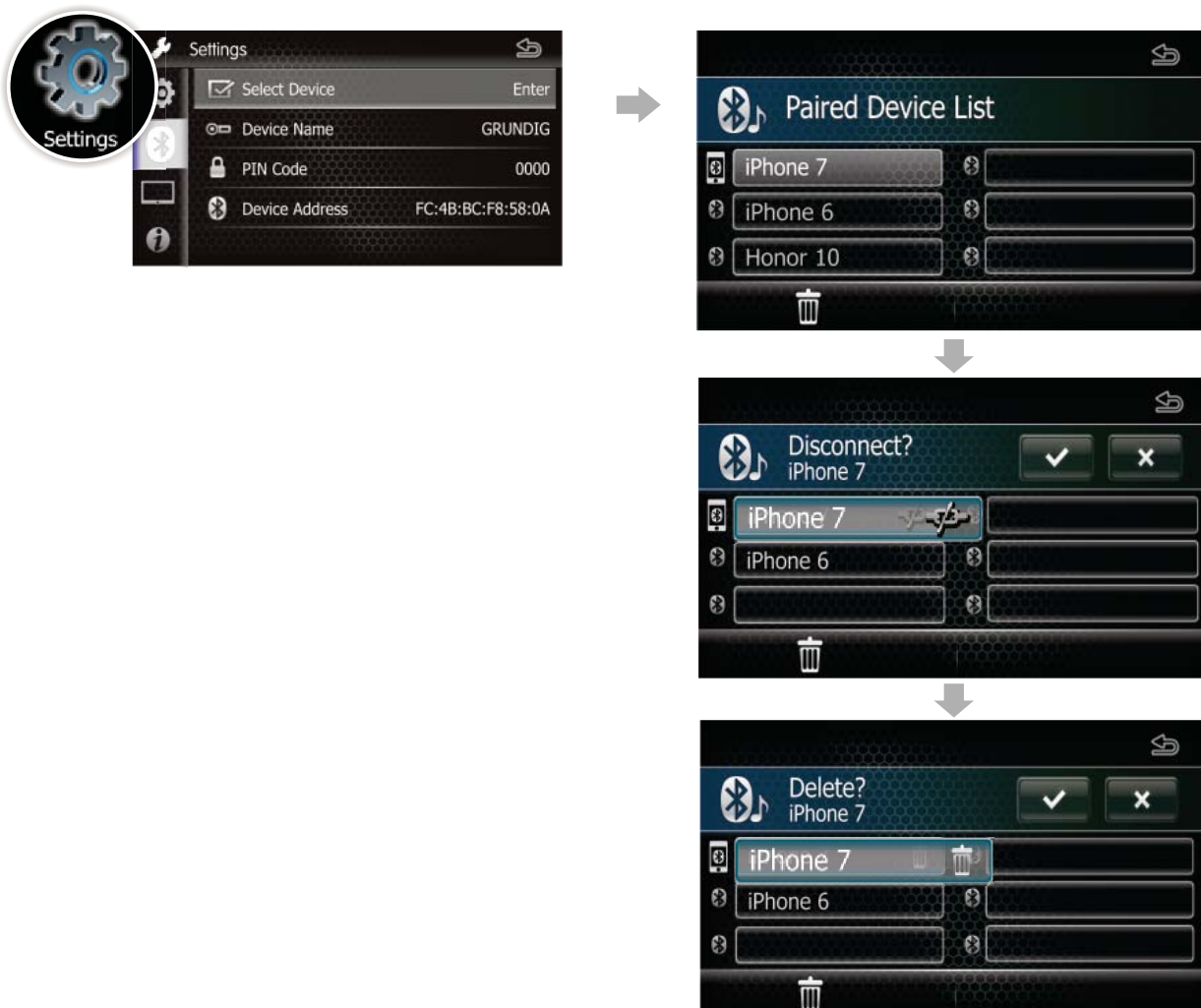
You can set the Album Art to the background image.
 Tap **Enable** / **Disable** to enable/disable this function.

Pairing a Device



Select Settings from the Phone's main menu to go to Bluetooth Device Settings. Look for the name GRUNDIG and select connect under Bluetooth options.

Connect/Delete Bluetooth Device



1. Tap  **Select Device** in the bluetooth setup menu.
2. Tap the device name you want to connect/delete.

Phone Call



TIPS

To Download the Phonebook, select Authorize from the request on your phone

Voice Assistant

You can access the voice recognition function of the phone connected to this Multimedia System.



TIPS

- This function is only available when a Bluetooth device is connected
- You can use the voice command function by pressing and holding  on the front panel.
- Tap  to exit the Voice Command function.

Smart phone connectivity gives phone users an incredibly intuitive way to make calls, use maps, listen to music and access messages with just a word or a touch.

- ◆ Please select the phone connectivity method from the menu setting



CarPlay



Android Auto



Android Mirror



iPhone Mirror

◆ **Getting Started**

1. Connect your phone to the Multimedia System using your phone's USB cable. After connected press ok, on the smart phone. Once connected the corresponding icon will be illuminated.

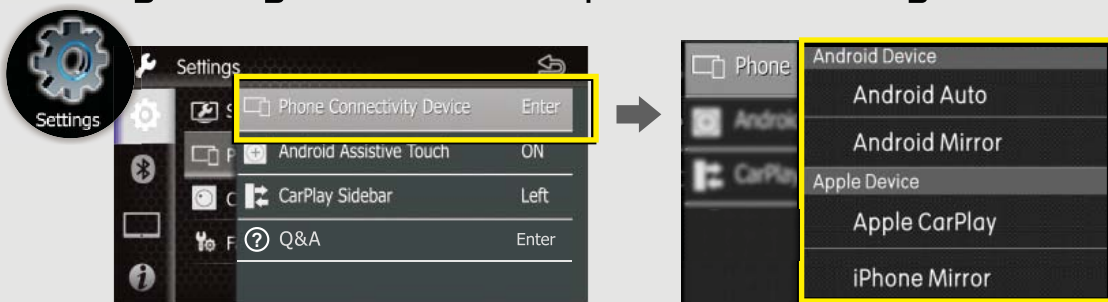


2. Tap the icon to start the desired source.



TIPS

Before using the smart phone connectivity, please go to phone mirroring settings to select smart phone connectivity method.



Android Mirroring

Android Mirroring is an easy way to mirror your phone onto the Multimedia System.

◆ Connect the Android Phone



TIPS

- If the smart phone connection to the Multimedia System is not successful, unplug and insert USB cable and try again.
- Compatible Android devices: Android Version 5.0 or later.

◆ Install Autolink App

- Autolink App is not installed.

After connecting the phone to the Multimedia system wait for the advisory message. Follow the instructions on your phone.



TIPS

The Autolink App must be installed on your phone before you can use the Android Mirroring function.

◆ Authorization

Please follow the pop up authorization prompt on your phone and complete the authorization



TIPS

If the authorization message does not appear on your phone, try unplugging the USB cable and re-insert again.

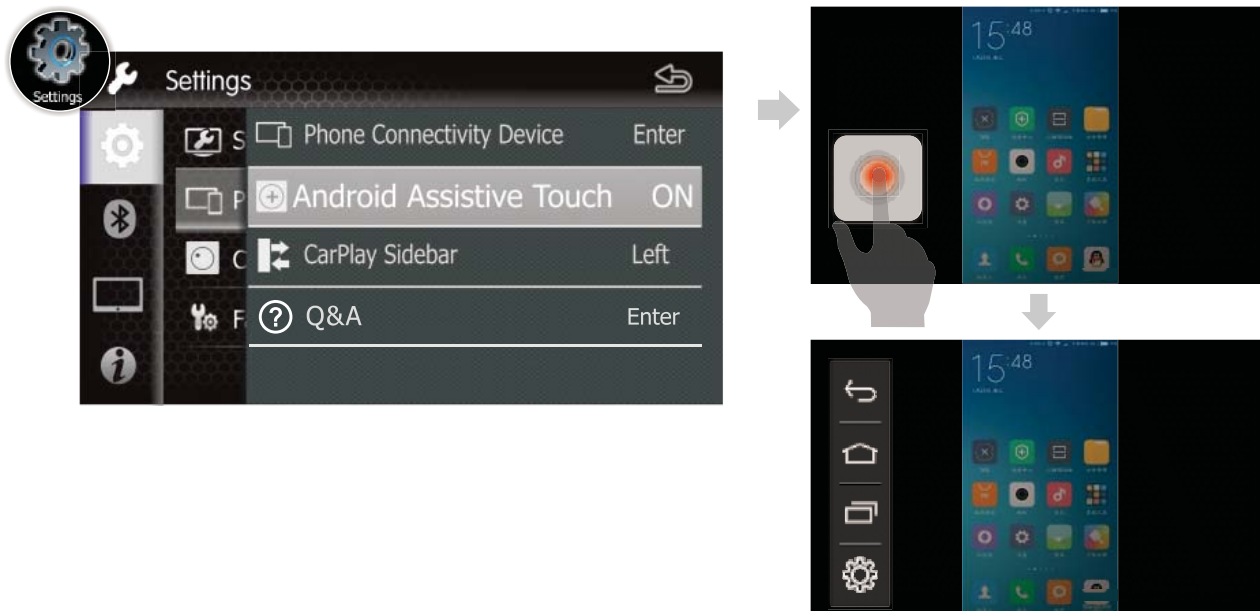
How to setup Android Mirroring two way control?

◆ Bluetooth connect


Connect your phone to the Multimedia System using your phone's USB cable, the Multimedia system will connect via Bluetooth with your phone automatically, the Android Mirroring two way control will be activated once Bluetooth is connected successfully.



How to enable Android Assistive Touch function



TIPS

- If Android Mirroring mode does not function you should receive a pop up advisory message. Click the  icon to check the details.
- About the Smart Phone Connectivity help, you can go to Settings/Phone Connectivity Device/Q&A to study.

iPhone Mirroring

iPhone Mirroring is an easy way to mirror your phone onto the Multimedia System.

◆ Connect an iPhone



TIPS


- If the smart phone connection to the Multimedia System is not successful, please unplug and insert USB cable and try again.
- Compatible iPhone devices: iOS Version 8.0 or later.

◆ Authorization

Please follow the pop up authorization prompt on your phone and "trust" the device.



TIPS

- Your iPhone must "trust" the Multimedia System before you use the iPhone Mirroring.
- If you close the authorization message on your phone, you can unplug & re-insert USB cable to try again.
- iPhone IOS 11 or above may have issues playing audio. A third party media player App may be a solution.
- If iPhone mirroring mode does not function you should receive a pop up advisory message. Click on the  icon to check details.
- About the Smart Phone Connectivity help, you can go to Settings/Phone Connectivity Device/Q&A to study.

About Apple CarPlay

CarPlay is a smarter, safer way to use your iPhone while driving. CarPlay takes the things you want to do and displays them on the Multimedia system screen. You can get directions make calls, send and receive messages, and listen to your music from your iPhone while driving. You can also use Siri voice control to make it easier to operate your phone.

TIPS

Some features, applications, and services are not available in all areas. For details, see: <http://www.apple.com/ios/carplay/>

◆ Connect an iPhone

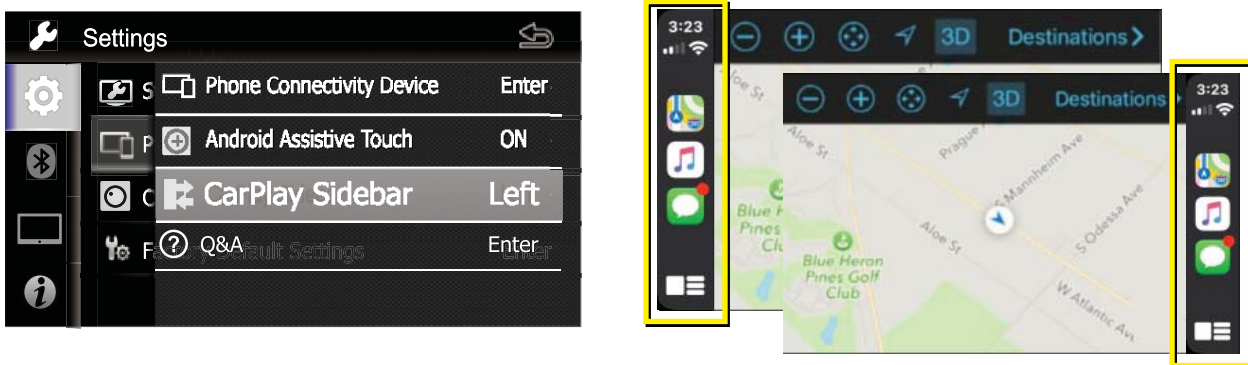


TIPS

If iPhone CarPlay does not function, unplug the USB and re-insert.

◆ Settings of Apple CarPlay

You can adjust the CarPlay Sidebar icon on the left or right side as shown below:

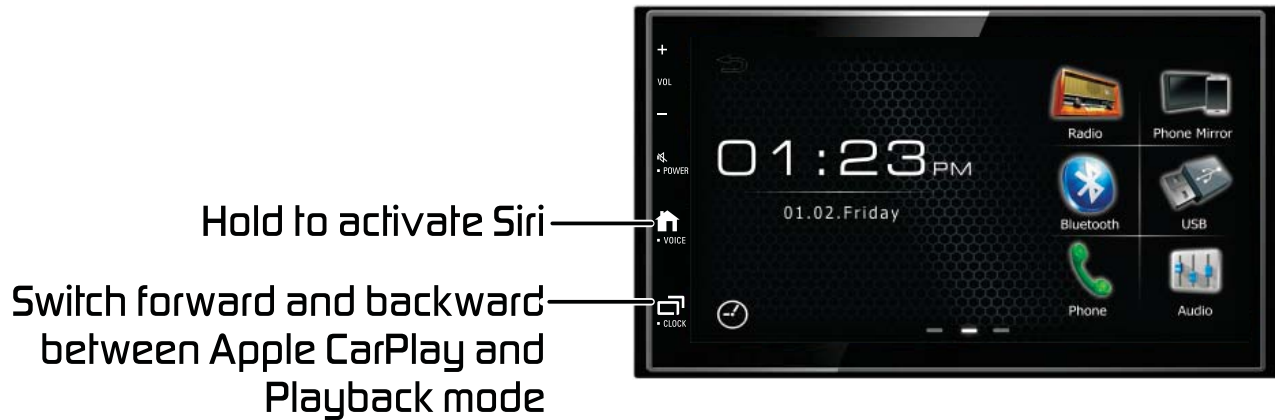


TIPS

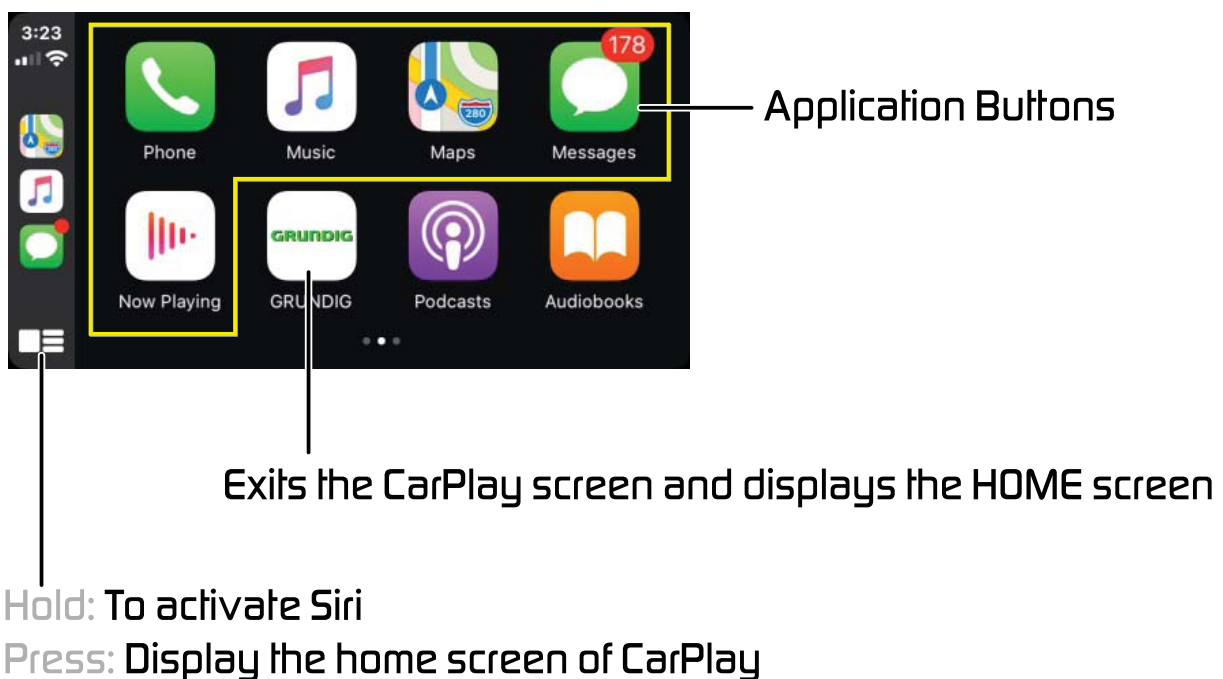
Please unplug and re-insert the USB cable after you change the CarPlay Sidebar option.

Operation of Apple CarPlay

◆ Operation button of Apple Carplay



◆ Operation button on CarPlay Home



About Android Auto

Android Auto enables you to use functions of your Android device convenient for driving. You can easily access route guidance, make calls, listen to music, and access convenient functions on the Android device while driving.

For details about Android Auto, visit the below address:

<https://www.android.com/auto>

<https://support.google.com/androidauto>.

TIPS

- Compatible Android devices
Android version 5.0(Lollipop) or later.
- Android Auto may not be available on all devices and is not available in all countries or regions.

◆ Connect Android phone

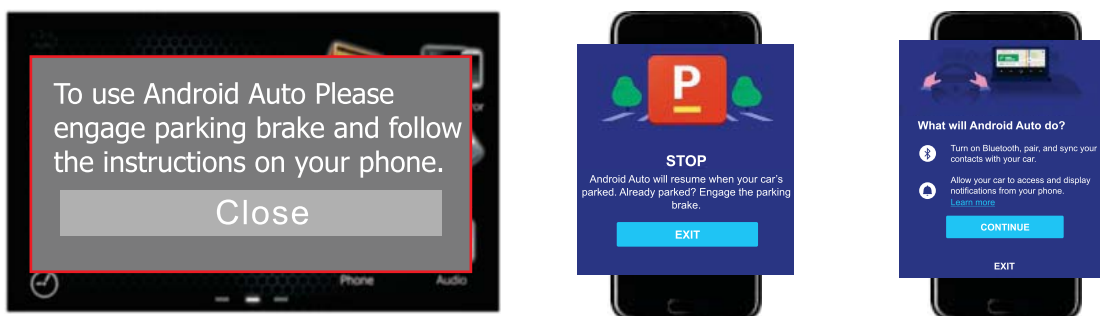


TIPS

If Android Auto mode does not function try unplugging the USB and re-inserting.

◆ Initial setup Android Auto

When you use Android Auto for the 1st time, make sure the parking brake is engaged and follow the instructions on your phone.



TIPS

You also can go to settings/System to set the Parking to On, to use Android Auto.

Operation of Android Auto

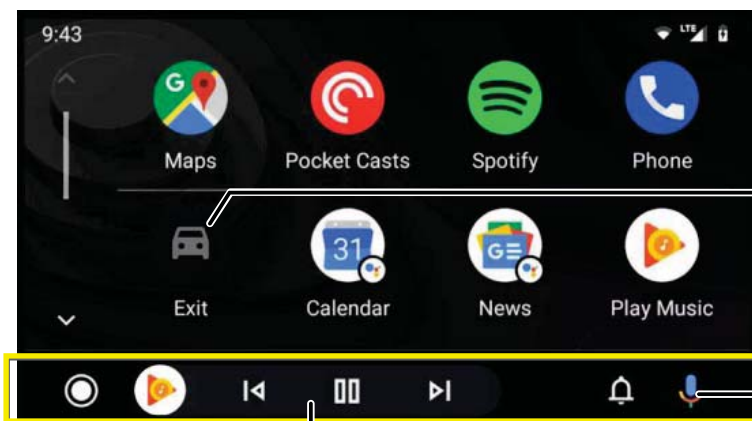
◆ Operation button of Android Auto

Hold to activate Google Assistant

Switch forward and backward between Android Auto and Playback mode



◆ Operation button on Android Auto Home

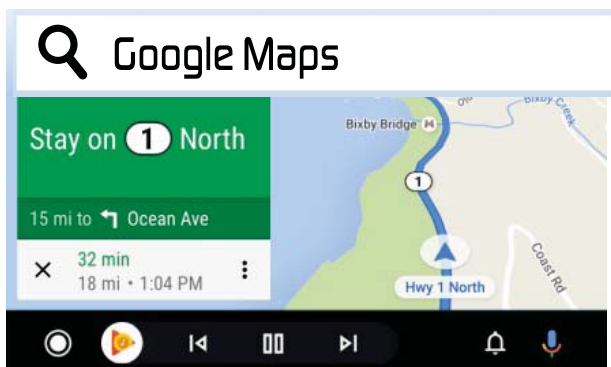


Return to Home screen

Google Assistant

Application/information buttons
Starts the application or displays information

◆ Voice only while driving



Typing is only available when parking brake is engaged.

24 Bit DSP Audio Operation

You can adjust the various settings:



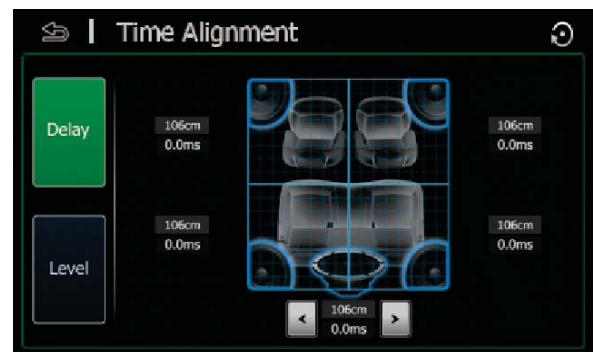
◆ 13 Band Equalizer



You can customize the equalizer, by adjusting each band.

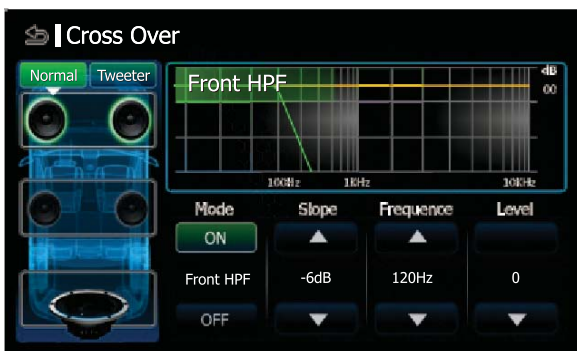
Once you have the desired setting, hold your finger on the **User1** or **User2** to lock in preset.



◆ Time Alignment



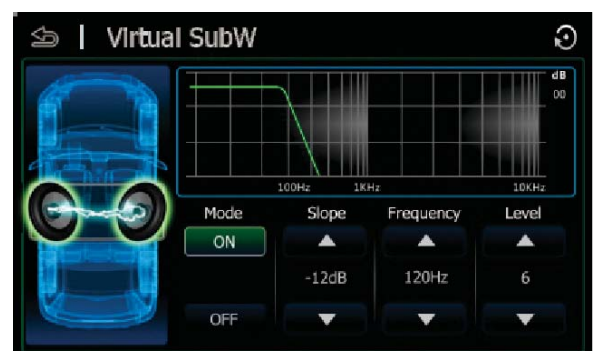
- Tap **Delay** to adjust the delay time of the selected speaker
- Tap **Level** to adjust the sound level of the selected speaker.

◆ Cross Over



- Tap **Tweeter** to set the virtual tweeter when you are selecting front speakers.
- Tap  to switch Front/Rear high pass filter function
- Tap  to switch Subwoofer low pass filter transfer function

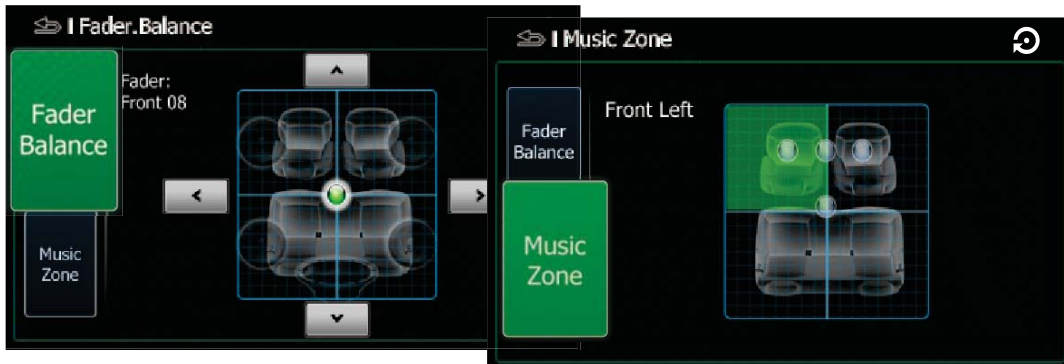
◆ Virtual Subwoofer



- Turn the Rear Speakers to Virtual Subwoofer. Enjoy the powerful Bass without install any real subwoofer.

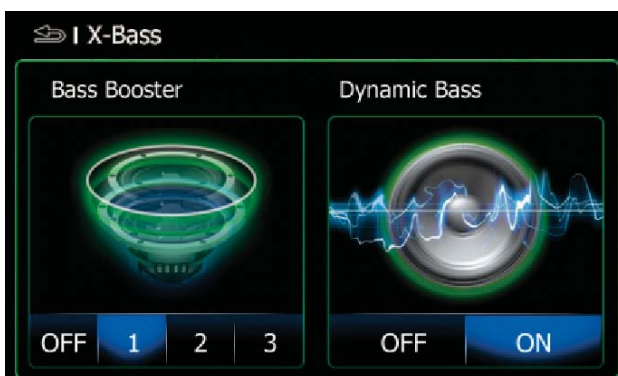
24 Bit DSP Audio Operation

◆ Fader . Balance / Music Zone



- Tap **Fader Balance** to adjust the volume balance around the touched area
- Tap **Music Zone** to select the perfect listening position

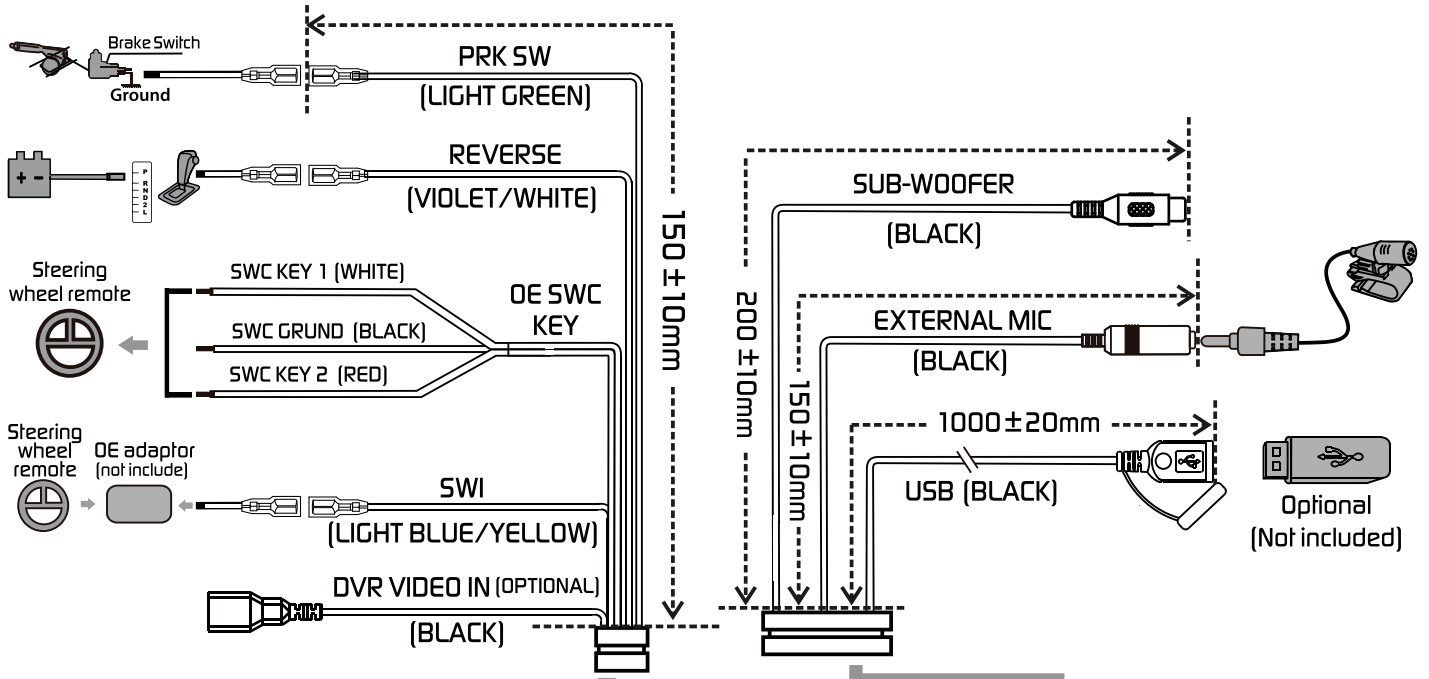
◆ X-Bass



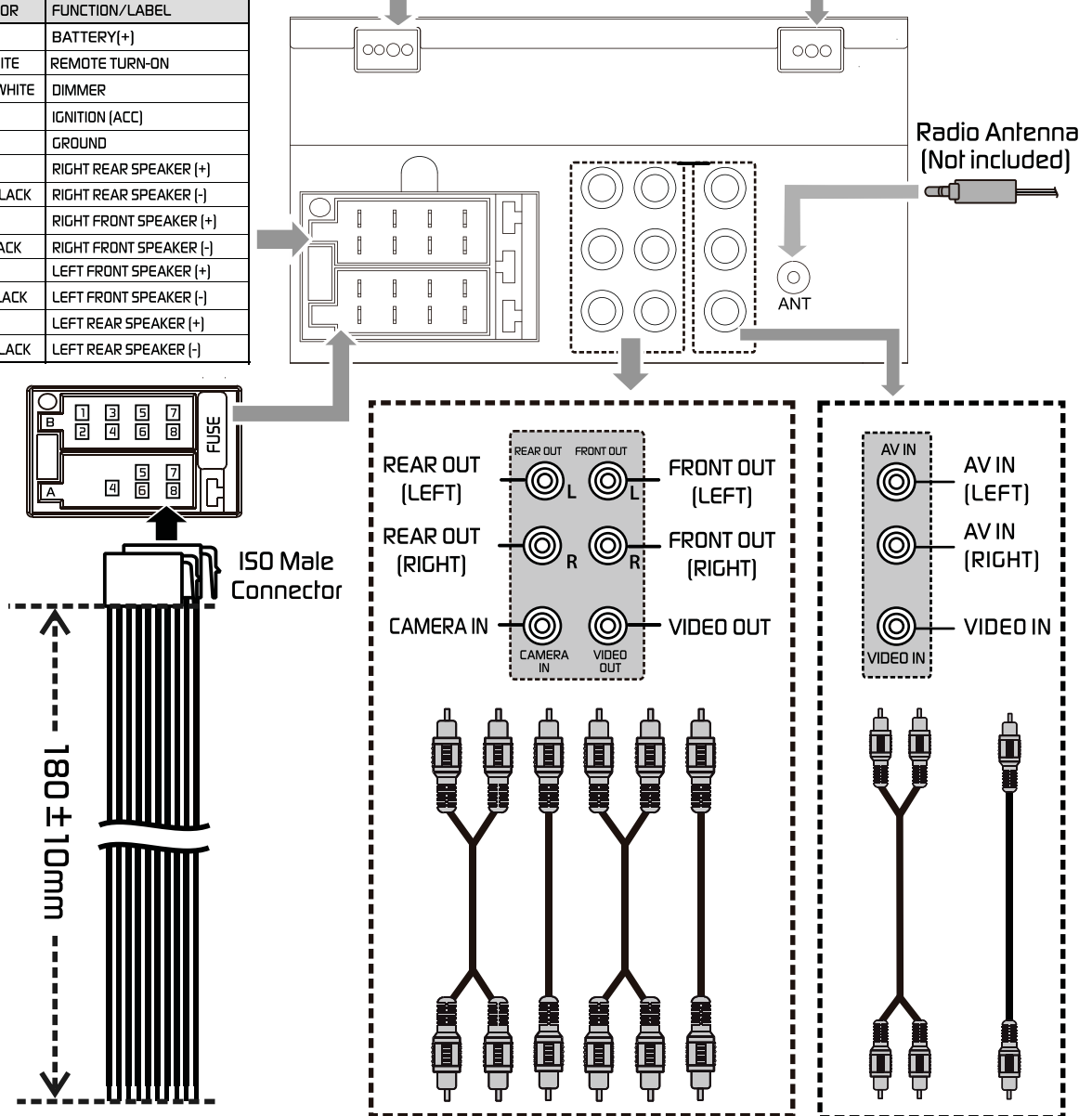
- Tap to Set the amount of bass boost, and set the amount of boost of low and high tones



Tap  resume to factory default value.



PIN	WIRE COLOR	FUNCTION/LABEL
A4	YELLOW	BATTERY(+)
A5	BLUE/WHITE	REMOTE TURN-ON
A6	ORANGE/WHITE	DIMMER
A7	RED	IGNITION (ACC)
A8	BLACK	GROUND
B1	VIOLET	RIGHT REAR SPEAKER (+)
B2	VIOLET/BLACK	RIGHT REAR SPEAKER (-)
B3	GREY	RIGHT FRONT SPEAKER (+)
B4	GREY/BLACK	RIGHT FRONT SPEAKER (-)
B5	WHITE	LEFT FRONT SPEAKER (+)
B6	WHITE/BLACK	LEFT FRONT SPEAKER (-)
B7	GREEN	LEFT REAR SPEAKER (+)
B8	GREEN/BLACK	LEFT REAR SPEAKER (-)



TFT Monitor section

Screen Size	:6.8 inches
Display Resolution	:1024x600 dots
Contrast Ratio	:500

USB interface section

USB Standard	:USB 2.0 Full Speed
File System	:FAT 16/32
Maximum Current	:DC 5V == 1.5A
D/A Converter	:24Bit

Bluetooth section

Communication System	: Bluetooth Ver 4.1
Output	: Bluetooth Standard Power Class 2
Maximum Communication Range	: Approx. 10meters
Frequency Band	: 2.4 GHz
Compatible Bluetooth Profiles	: HFP/SPP/A2DP/AVRCP /PBAP
Supported Codecs	: SBC (Sub Band Codec)

Radio section

Frequency FM range	: 87.5-107.9MHz
Frequency AM(MW) range	: 530-1710 KHz
Usable sensitivity	: 13.2 uV (FM) : 44.7 uV (AM)(MW)

Video section

Color System of External Video Input	: NTSC/PAL
External Video Input (RCA/3.5m Jack)	: 1 Vp-p /75Ω

Audio section

Maximum Power	: 50Wx4
Continuous Power Output (RMS)	: 22 Wx4
Preout Level (V)	: 4V/10kΩ
Preout Impedance	: ≤1.3kΩ
Speaker Impedance	: 4-8 Ω
Output Frequency Band	: 20-20000Hz

General

Operating Voltage	: 14.4V(10.5-16 V)
Operational Temperature Range	: -20°C-+80°C
Maximum Current Consumption	:15A

Support Formats

Support Audio Formats

- MP3/WMA Bit rate: 16-320 Kbps,VBR
- WMA Version V9 or earlier
- ID3 Tag Version 1.0/1.1/2.2/2.3/2.4

Support Video Formats

- MPEG 1 (.mpg,mpeg), 720x480(30fps)
- MPEG 2 (.mpg,mpeg), 720x480(30fps)
- MPEG 4 (.mp4,avi), 720x480(30fps)

Support File / Folder Formats

- Directory nesting up to a maximum of 8 levels
- Number of tracks/titles: maximum 999
- Number of albums/foldersmaximum 99

GRUNDIG

