

MRC-WLP43



# Wireless Backup Camera & Color Monitor Kit

## User Manual



ECHOMASTER



**MRC-WLP43**

Wireless Backup Camera  
& Color Monitor Kit

## Introduction

**Thanks for purchasing the EchoMaster Wireless Backup Camera and Color Monitor Kit.**

EchoMaster Camera & Monitor Kits are designed to improve safety by providing high quality images from camera inputs. This may help to improve vehicle maneuvering capabilities by displaying blind spots or areas not normally visible to the driver.

Please ensure you read and understand all aspects of this manual before fitting or using your EchoMaster products.

**For installation video, please visit [EchoMaster.com](http://EchoMaster.com)**

## Box Contents

- ▶ Wireless camera (with built-in transmitter)
- ▶ 4.3" Wireless color monitor (with built-in receiver)
- ▶ Mounting bracket arm
- ▶ Dual 2.4A USB CLA charger (provides power to the monitor, as well as an extra USB port to charge any device that is USB chargeable, up to 2.4A).
- ▶ 3.2ft USB to micro-USB cable to power monitor
- ▶ Install accessories (T-Taps, zip ties)

## Key Features

- ▶ Color monitor that can be mounted to your dash or windshield
- ▶ Adjustable monitor mounting arm
- ▶ Camera with 120° viewing angle
- ▶ Adjustable vertical camera angle
- ▶ System automatically activates when car is in reverse
- ▶ Additional USB port for charging a device

## MRC-WLP43

Wireless Backup Camera  
& Color Monitor Kit



## Installing the Camera

### Step 1

Remove the screws that hold the license plate to the vehicle and remove the license plate.



### Step 2

Find an opening (or drill a small hole) to feed the camera cable into the vehicle.



### Step 3

Position the camera mounting bracket behind the license plate.

Insert the screws to hold the camera and license plate in place.

Note: Camera height is adjustable via vertical slots in bracket directly behind camera.



### Step 4

The camera angle should be adjusted to a horizontal position relative to the ground to provide the best view behind the vehicle.

To adjust the camera angle, tilt the camera up or down to one of the five positions for your optimal viewing.

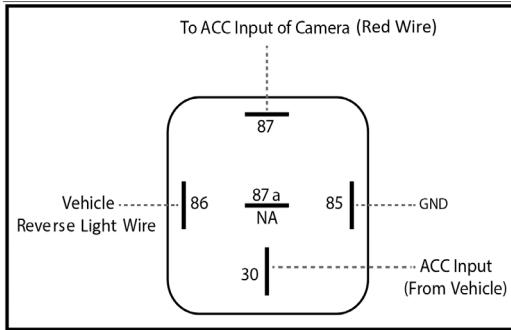


### PLEASE NOTE

These instructions are only a general guide. If more assistance is needed, please consult with a professional installer.

## Installing the Camera - continued

### Installer Notes

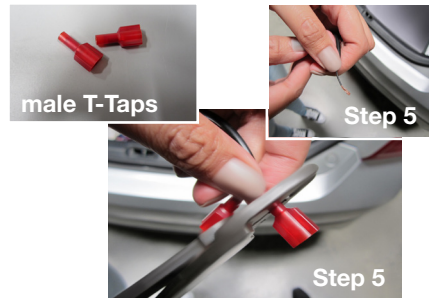


This system is completely signal sensing, there is no “reverse trigger wire” in the wire harness. Some vehicles’ reverse lamp wires are now variable voltage wires, and may cause a fuzzy or distorted image. If you experience this, please use a relay to power your camera, as shown in the diagram.

### Step 5

Insert each of the wire ends from the camera cable into the male T-Taps. Crimp the T-Tap onto the wire to secure its position.

**Red Wire** >> 12V / power  
(when vehicle is shifted to reverse gear)  
**Black Wire** >> Ground.



## MRC-WLP43

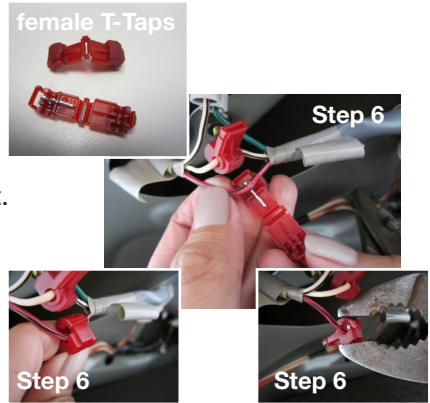
Wireless Backup Camera  
& Color Monitor Kit



### Step 6

Locate your reverse light wires. Position the female T-Taps onto each wire. Close the T-Tap onto the wire of the reverse light. You can use regular pliers for this.

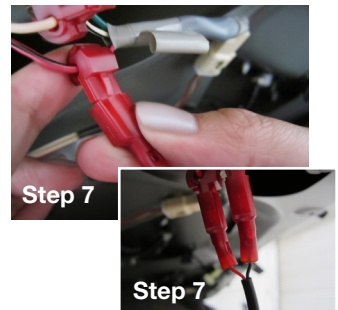
Make sure its connection is secure.



### Step 7

A voltmeter may be necessary to determine polarity, + and -.

Connect the T-Taps together.



## Setting Up the Monitor

### Step 1

Slide the arm onto the back of the monitor. Press on to the dash or windshield.

Push lever towards the base to secure in place.





## MRC-WLP43

Wireless Backup Camera  
& Color Monitor Kit

### Step 2

Fine tune the monitor's position and make sure to tighten the knobs on the bracket when finished.



### Step 3

Connect the USB cable to the USB power adapter and insert it into the vehicle's lighter / 12v socket.



### Note

If 12V socket is constant (powered on at all times), be sure to unplug monitor when leaving vehicle. Leaving connected for long periods of time could drain battery.



to order additional car chargers and power cables, please visit [iSimple.com](http://iSimple.com)



## MRC-WLP43

Wireless Backup Camera  
& Color Monitor Kit

## Setting Up the Monitor - continued

### Step 4

The blue LED will turn on once powered.

When in reverse, the monitor will display the camera view instantly.



## Adjusting Monitor Settings

### Step 1

Press the menu button to open the settings screen when vehicle is in reverse gear. When not in reverse gear, pressing the menu button will enter time and date set-up mode.

### Step 2

Press the arrow keys to change settings and press the menu button to scroll to next setting.

When vehicle is not in reverse gear, the following settings can be changed:

**Time and Date**

When vehicle is in reverse gear, the following settings can be changed:

**Brightness**

**Contrast**

**Color**

**Language**

**Reset to defaults**

**Please make sure you scroll through all settings to set desired settings.**

# Installation Guide



## MRC-WLP43

### Wireless Backup Camera & Color Monitor Kit

Camera	
Sensor	CMOS
LEDs	No
Illumination	1 Lux
Viewing Angle	120°
Mirror Image	Yes
Normal Image	No
Water/Debris-Proof	IP66
Audio	No
Power Supply	DC12-24V 1A
Current	<300 mA
Operating Temp	14°F - 140°F/-10°C - 60°C
Dimensions - mm (in)	68 (2.7) x 24 (1) x 40 (1.6)
System	NTSC
TV Lines	480
Resolution (HxV)	680 x 480

Built-in Transmitter	
Frequency	2.4G ± 0.3
Operating Temp	14°F - 140°F / -10°C - 60°C

Monitor	
Screen Size	4.3"
Aspect Ratio	16:9
Power Supply	DC 5V 1A
Resolution	640x480
Luminance	250 nits
Contrast	400
TV Format	NTSC
OSD Languages	Yes
Video Inputs	1 input
Audio Inputs	0
Triggers	1
Current	300mA
Operating Temp	14°F - 140°F / -10°C - 60°C
Parking Guidelines	Yes
Connection Type	Micro-USB
Dimensions - mm (in)	120 (4.72) x 25 (1.0) x 20 (0.78)





For installation video, please visit <http://echomaster.com/>



email - [support@aampglobal.com](mailto:support@aampglobal.com) (US)  
tel - 800-477-2267



EchoMaster is a Power Brand of AAMP Global.  
**EchoMaster.com**