



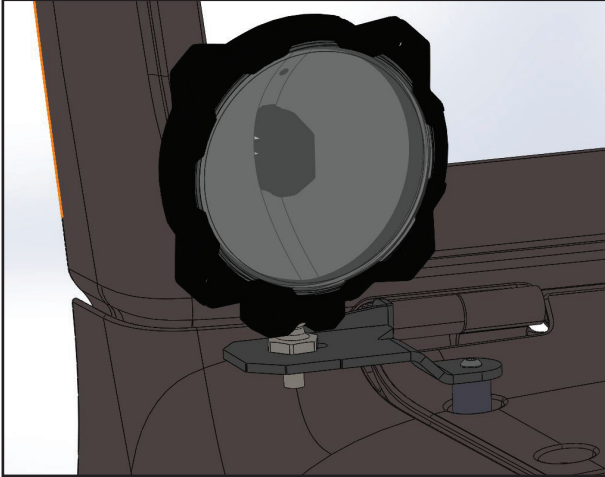
**ADVENTURE  
FURTHER®**

**2021+ JEEP JL /JT  
392 | MOJAVE | SANDSTORM (SP. EDITIONS)  
COWL LIGHT MOUNT BRACKETS**

## INSTALLATION INSTRUCTIONS

### **IMPORTANT:**

Please read all instructions before beginning installation. These guidelines are provided in good faith to help prevent any issues arising from errors during installation. The manufacturer of this product shall not be held responsible for any user actions taken or not taken during installation. There are many details of the installation that are assumed to be general mechanical knowledge to experienced installers; which are not detailed in these instructions. These installation guidelines are intended to serve as professional recommendations and are not as a step-by-step, fail-safe installation checklist. Selection of an experienced installer is the sole responsibility of the project owner.

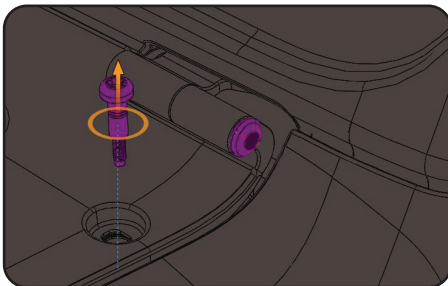


### **PARTS INCLUDED:**

- (1) - JL/JT 392 COWL LIGHT BRACKET SET  
(PASSENGER & DRIVER'S SIDE)
- (2) - 13MM (1/2") SPACERS
- (2) - M6\*80MM BUTTON HEAD CAP SCREWS
- (2) - M6 FLAT WASHERS

### STEP BY STEP INSTALLATION INSTRUCTIONS

TOOLS NEEDED: T40 & T45 TORX | METRIC ALLEN WRENCH

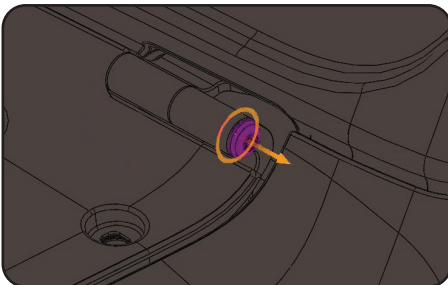


#### **STEP 1 - REMOVE FACTORY HARDWARE**

Starting with either Passenger or Driver's Side, begin by removing the Upper factory cowl mounting screw closest to the windshield hinge using a T40 TORX tool.

*Please note:*

*Save/store the factory T40 Torx Screw, as it will be replaced by the hardware supplied in this kit.*

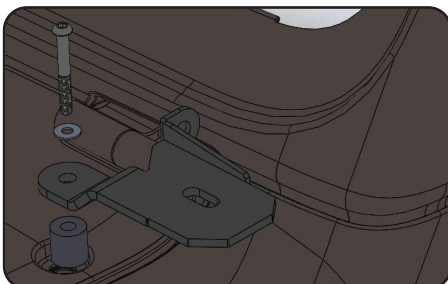


#### **STEP 2 - "LOOSEN" HINGE PIN NUT**

Using a T45 TORX tool, "loosen" (note remove) the factory pin-nut from the hinge approximately 1/8" to allow the Cowl bracket to 'hook' into position.

*Please note:*

*Due to OEM assembly tolerances, the bracket is slotted to compensate for the height location of the factory hinge.*



#### **STEP 3 - FINAL MOUNT ASSEMBLY**

Slide the Cowl Mount into position over factory pin-nut (do not tighten pin nut). Position the spacer over vehicle's upper cowl mounting hole & with the supplied M6\*80mm screw and washer, "hand-tighten" to prevent cross-threading. Using Allen Tool, tighten the M6 hardware (be careful not to over-tighten) first before final tightening of factory pin nut. Repeat on the other side.

Mount some rad lights and now you're ready to Adventure Further!