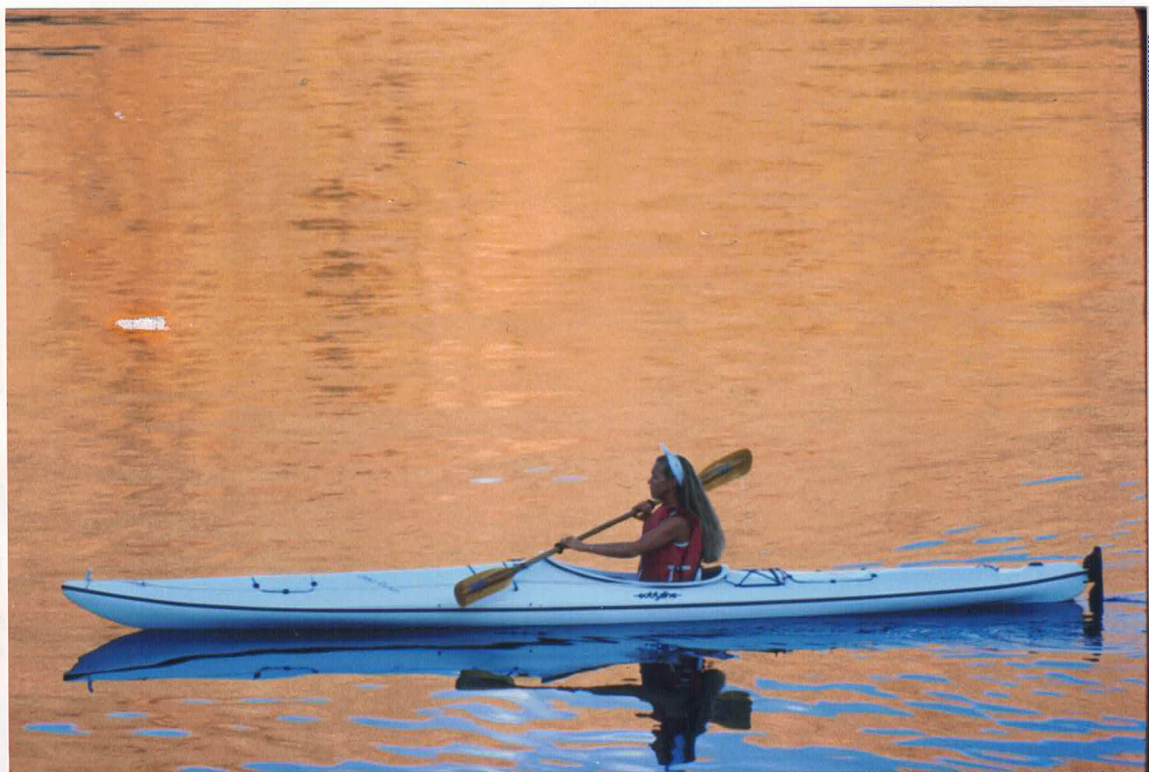


eobdyline



Kayaks for the Connoisseur

1989

Wind Dancer

Deluxe Paddling in Comfort, Safety & Style

Photo on front cover.

Design: Tom Derrer

Specifications:

Length Overall 17'
Beam 24"
Waterline Length 16'4"
Waterline Beam 22"
Cockpit Size 36" x 17"
Rear Hatch 12" x 14"
Front Hatch 7" x 9"
Load Capacity 400 lbs.
Weight: Standard 60 lbs.
Foamlite 52 lbs.

This 17 foot kayak, our best selling model, represents a breakthrough in rough water performance for a high volume recreational touring kayak. We have achieved a balanced windage requiring no directional correction in winds up to 20 knots. Wind Dancer's unique hull design gives the paddler ultimate control with the ability to either track effectively or turn with ease by carving. The bow lifts well in chop with little or no penetration and a large cockpit provides comfort for the larger paddler while molded thigh braces give even small paddlers excellent contact and control. Very favorably reviewed by Sea Kayaker Magazine (Spring 87), Wind Dancer is a very stable, secure yet efficient kayak and a delight in open water. Plenty of stowage for extended expeditions and the ease of loading will delight you.

Calypso

Lithe, Lively & Light Weight – A Sporty Responsive Kayak

CALYPSO manifests the beauty, grace and performance of her big sister the Wind Dancer but in a more slender, delicate expression. Smaller throughout and lighter as well, Calypso gives up a little of Wind Dancers' stability in the interest a sportier ride. Far from tippy however, her moderately rockered v-hull provides a comfortable and quick response to the paddle and a lively performance in weather that will encourage you to play. Calypso is well balanced and holds her own in wind and following seas without rudder assist. She surfs delightfully and her smaller cockpit and molded thigh braces help make her easy to roll up in event of a capsiz. The best simple description of the Calypso is "Sporty and Fun"!! Just enough volume for comfortable packing on one and two week trips.

Design: Tom Derrer

Specifications:

Length Overall 16'7"
Beam 23"
Waterline Length 16'
Waterline Beam 20"
Cockpit Size 30" x 16"
Rear Hatch 12" x 14"
Front Hatch 7" x 9"
Load Capacity 300 lbs.
Weight: Standard 52 lbs.
Foamlite 47 lbs.



WIND DANCER



DESIGN:
Tom Derrer

SPECIFICATIONS:

LENGTH OVERALL17'
BEAM24½"
MAXIMUM LOAD400 lbs.
FRONT HATCH 8.5x9.5"
WEIGHT55 lbs.
WATERLINE LENGTH16'4"
WATERLINE BEAM22"
COCKPIT SIZE36"x17"
REAR HATCH12"x14"

STANDARD FEATURES:

- High strength *vacuum bagged* fiberglass laminate.
- Uni-directional hull reinforcement.
- Double biased seams.
- Durable PVC trim extrusion at seam line.
- Foot-controlled rudder with auto kick-up, and hidden rudder cables.
- Adjustable backrest folds forward for behind the cockpit access, molded thigh braces, large supportive molded seat.
- Watertight foam bulkheads bow and stern flex with the hull and large *flush* hatches have six locking cams each for a very secure fit.
- Carrying toggles at bow and stern.
- Deck tie downs and bungis on rear deck arranged for paddle outrigger self rescue system.
- Eddyline's tradition of impeccable quality construction and attention to detail throughout.

*Deluxe Paddling in Comfort,
Safety and Style*

GRAND SAN JUAN



DESIGN:

Tom Derrer, Dennis Mullen

SPECIFICATIONS:

LENGTH OVERALL 20'
BEAM 32"
MAXIMUM LOAD 650 lbs.
FRONT HATCH 8.5x9.5"
WEIGHT 95 lbs.
WATERLINE LENGTH 18'9"
WATERLINE BEAM 29"
COCKPIT SIZE 36"x17"
REAR HATCH 12"x14"

STANDARD FEATURES:

- High strength *vacuum bagged* fiberglass laminate.
- Uni-directional hull reinforcement and integral PVC foam rib.
- Double biased seams.
- Durable PVC trim extrusion at seam line.
- Foot-controlled rudder with auto kick-up, easy *cable adjust*, foot rests and hidden rudder cables.
- Soft cover for center cockpit.

- Adjustable backrests fold forward for behind the cockpit access, large supportive molded seats.
- Watertight foam bulkheads bow and stern flex with the hull and large *flush* hatches have six locking cams each for a very secure fit.
- Carrying toggles at bow and stern.
- Eddyline's tradition of impeccable quality construction and attention to detail throughout.

*Versatility, Security
and Performance
for Family or Expedition
(with sailing options)*

Sea Star

A Stylish Blend of Efficiency, Speed & Grace with Room to Cruise



Design: Tom Derrer

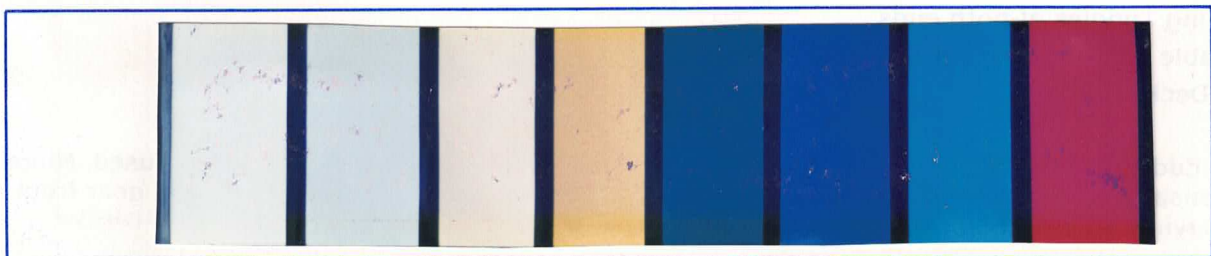
Specifications:

Length Overall 17'8"
Beam 22"
Waterline Length 17'
Waterline Beam 20"
Cockpit Size 30"x 16"
Rear Hatch 12"x 14"
Front Hatch 7"x 9"
Load Capacity 400 lbs.
Weight: Standard 60 lbs.
Foamlite 52 lbs.

The Sea Star is a touring boat for the paddler who wants to go places. Her extra length and narrow beam provide a very fast ride and a sporty feel. Outfitting is deluxe with deck lines, bow and stern bunjis, a recessed deck compass and foot controlled rudder. Thigh braces are molded into the deck and padded for an intimate fit. Sea Star has a moderately rockered v-hull, hardening chines aft for excellent carving and a low profile arched deck for reduced windage. Sea Star has been an immediate favorite of Northwest paddlers.

Colors

WHITE
CHAMPAGNE
CLOUD GRAY
ALASKAN IVORY
AZTEC YELLOW
AQUAMARINE
MARLIN BLUE
REGATTA BLUE
RASPBERRY



SWIFT PADDLES



Sea Swift — Mark II

The Sea Swift is our standard paddle. It is a unique asymmetrical blade and spoon configuration. It's lengthened center of effort provides extra power and bite while the center rib smooths the stroke and eliminates flutter. Eddyline's proprietary construction methods yield a distinctively elegant and light paddle while retaining extreme durability.

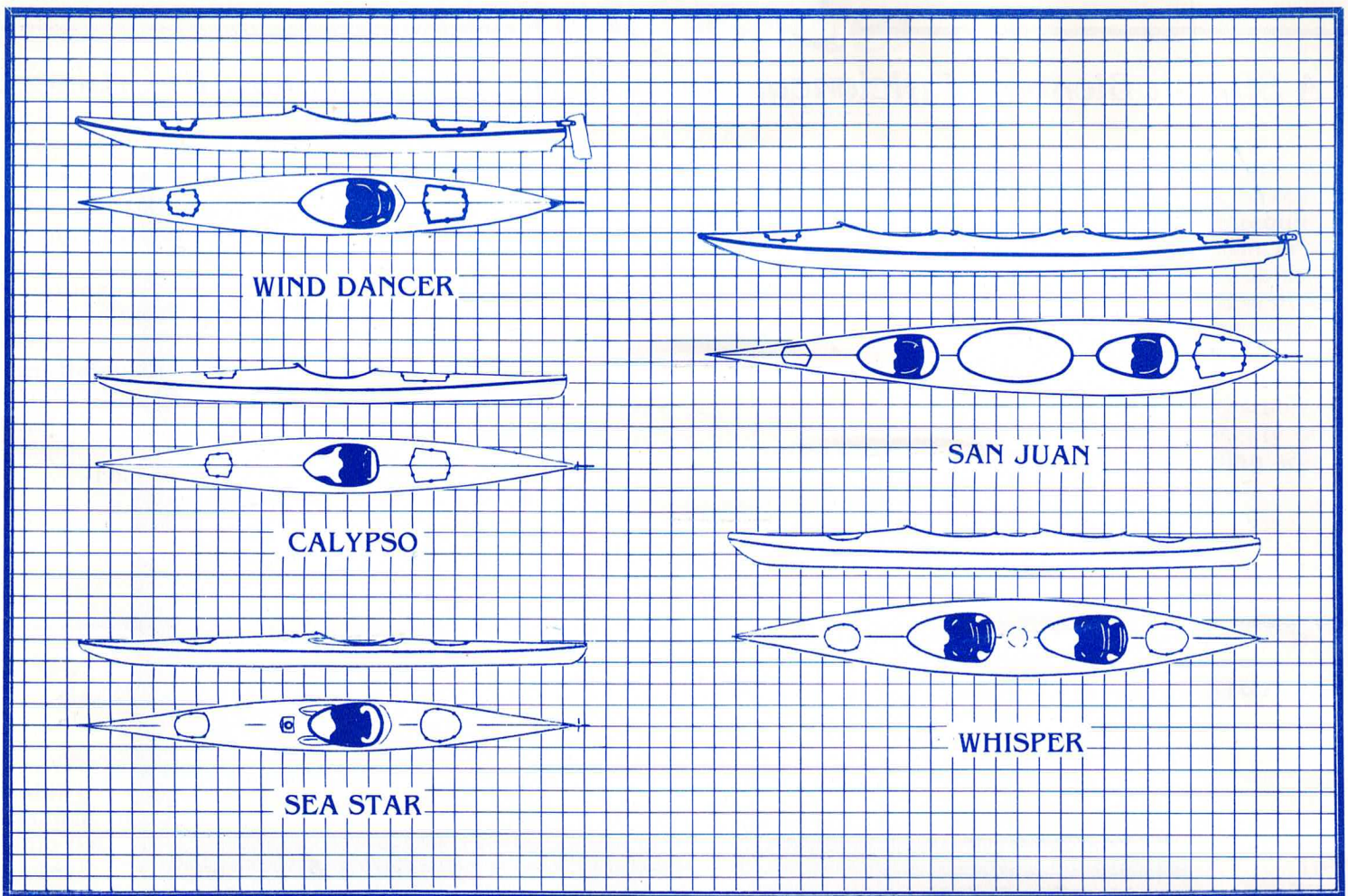
Wind Swift — Mark II

Combining the best of two worlds, we have blended history and technology to produce a paddle that provides very little wind resistance, but still performs like a modern paddle should with power for acceleration, bracing and rolling. This paddle is extra light and easy to use, a favorite for open water touring.

Competition Swift

Designed for the racer, this paddle is potent. Built in graphite and glass it is stiffer than a glass paddle with an incredible weight/strength ratio. It's larger blade area provides instant acceleration and very smooth follow through. It must be tried to be appreciated.

*Lightweight and Powerful Tools
for the Discerning Paddler
— Exquisitely Crafted —*



Standard Features

of All Eddyline Kayaks

- Laminated under Vacuum and Pressure: STANDARD GLASS, FOAMLITE and KEVLAR Laminates
- UV Resistant Gel Coats
- Reinforced wear areas (keels and center hull)
- Double Biased Seams and Seamlock Trim providing hidden and protected rudder cable passage
- Flush mount watertight hatches
- Closed Cell Foam Bulkheads at both Bow and Stern
- Abundant Interior Cockpit space for on-hand items
- Comfortable fiberglass seat with thigh support and an adjustable back rest which flips forward easily for interior loading
- Nylon covered removable back rest pad. NEW!!
- Integral padded Thigh Braces (except San Juan and Whisper)
- Foot Controlled Rudder System.
- EKW High Performance Flip-up Rudder with Foot Pedal Locks (except San Juan)
- Easy adjust spring loaded sliding Foot Pedals. NEW!!
- Carrying Toggles at both ends
- Lockable Safety Stainless Eye Strap
- Rear Deck Bunjis for Paddle Float Re-Entry System (except doubles)

Note: Eddyline warrants the integrity of the flotation system for safety when properly used. Minor seepage or condensation is possible in the enclosed areas of any boat. Please protect important gear from moisture when carrying it in your kayak.