



Punches, Dies, & Shear Blades

FOR SCOTCHMAN™ IRONWORKERS

☎ **USA:** 800-451-4342

☎ **International:** 330-296-4342

☎ **Fax:** 800-451-6877

💻 **Visit:** www.clevelandpunch.com

✉ **Email:** sales@clevelandpunch.com

📍 **Address:** 666 Pratt Street, Ravenna, OH 44266

CLEVELAND

PUNCH & DIE COMPANY

ESTABLISHED 1880

THE CLEVELAND ADVANTAGES

Going the Extra Mile and Delivering on Our Promises For Over 140 Years

THE WORLD LEADER IN THE TOOLING INDUSTRY

With over 140 years of experience in the industry, our team at Cleveland Punch & Die is dedicated to support our customer's needs. We have the industry's largest stocking inventory and are the OEM recommended supplier for machines across the industry. As the world-class leader in tooling and related components, you can be assured of our commitment to excellence.

THE GREEN TEAM

Our customer service team is here to provide the knowledge and service you deserve and strives to develop long lasting partnerships. We are available by phone, email or online chat 7am - 6pm EST.

WORLD CLASS ENGINEERING

Our Engineering team works hard to design the highest quality punches, dies, shear blades, and custom tooling on the market. Our high quality and innovative tools keep your shop on the leading edge of technology.

CONSISTENT QUALITY

We provide our customers with tooling manufactured from our own proprietary tool steel. By utilizing a consistent raw material and the latest metallurgical heat-treating technology, the tooling you receive from Cleveland Punch & Die is the industry's highest and most consistent quality.

DEPENDABLE DELIVERY

Our commitment to manufacturing innovation enables Cleveland Punch & Die to provide you with prompt shipment on the highest quality tools you need. Fast delivery means increased productivity for your operation.

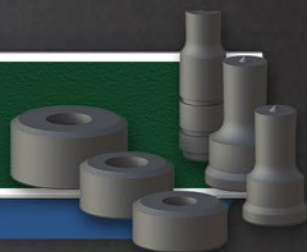
MODEL	SC-1000	H.P.	10	VOLT	115
SERIAL	1000000	KG	100	FLA	10
SCOTCHMAN INDUSTRIES, INC. PHILIP, SOUTH DAKOTA, U.S.A. PH. 605-859-2542				PH	10
MADE IN U.S.A.				BLADE LENGTH	10

TABLE OF CONTENTS

Punches, Dies, & Shear Blades For Scotchman™ Ironworkers

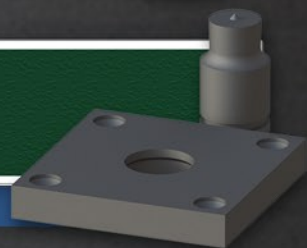
1 PUNCHES & DIES

Punches, Dies, Shape Options, & Punch-Easy®



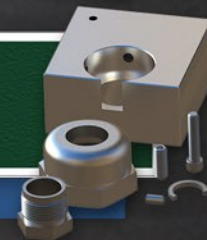
2 OVERSIZE TOOLING

Oversize Punches & Dies



3 ACCESSORIES

Headed & Snap Ring Style Accessories



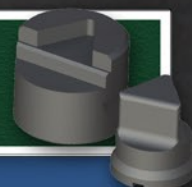
4 SHEAR BLADES

Flat Bars, Notchers, & Angles



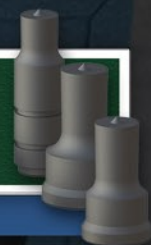
5 CUSTOM APPLICATIONS

Corner Radius, Picket, Offset, Bevel, & Bevel Serrated Dies, Pipe Notcher, & More



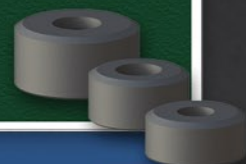
7 STOCK PUNCH CHARTS

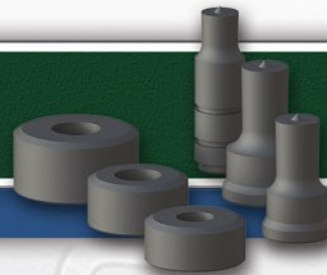
Stock Round, Square, Hexagon, & Oblong Punch Charts



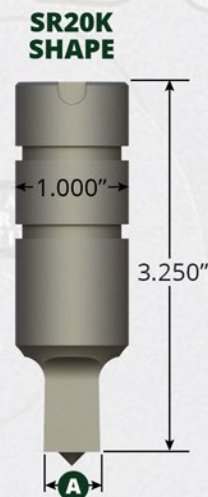
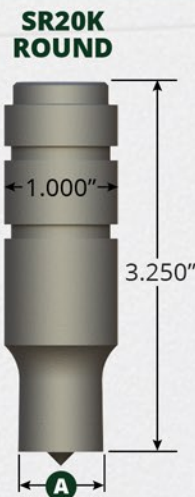
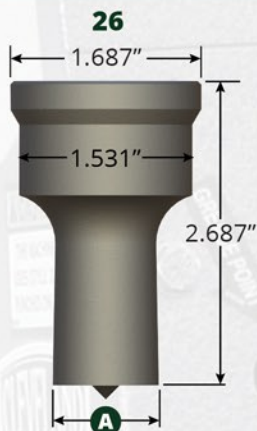
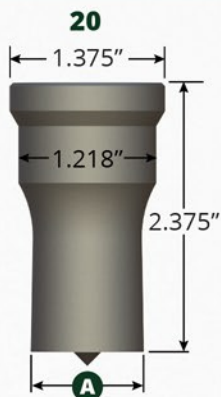
8 STOCK DIE CHARTS

Stock Round, Square, Hexagon, & Oblong Die Charts



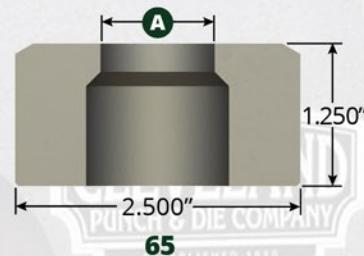
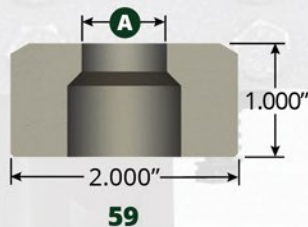
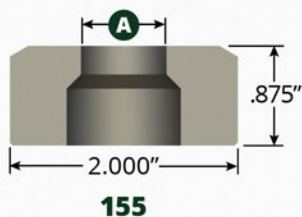


PUNCHES



See stock punch sizes on page 7.

DIES



See stock die sizes on page 8.

SHAPE OPTIONS

Shaped tooling is available upon request. When ordering, please provide size and desired shape. Punches and dies can be keyed and notched to index shape at desired orientation.



SQUARE



RECTANGLE



OBLONG



HEXAGON

PUNCH-EASY®

Our patented lubricant, Punch-Easy®, is formulated to increase tool life during punching and shearing applications.



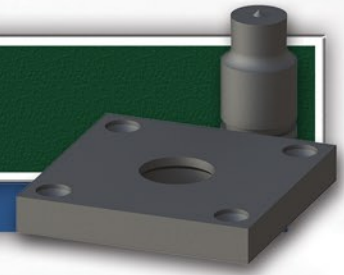
PART #	DESCRIPTION
PEHP	HALF PINT
PEQTL	QUART
PEGLL	GALLON
PE5GL	5 GALLON PAIL
PE55L	55 GALLON DRUM



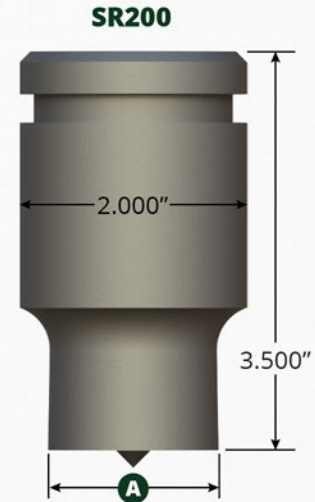
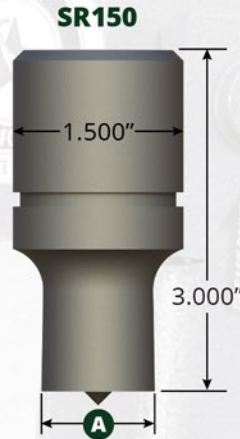
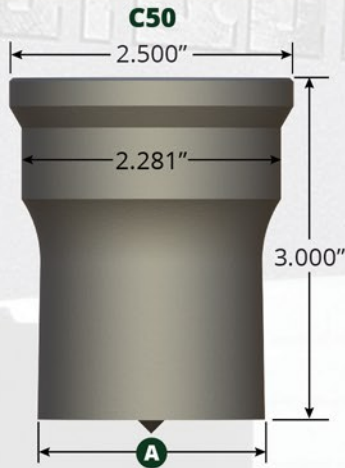
OSHA SAFETY WARNING: It is the users responsibility that the machine and tooling be setup and used in accordance with local and national OSHA laws and ANSI B11.5 standards for safety. Do not permit unqualified personnel to setup or operate the machine. Extreme care should be used at all times.

OVERSIZE TOOLING

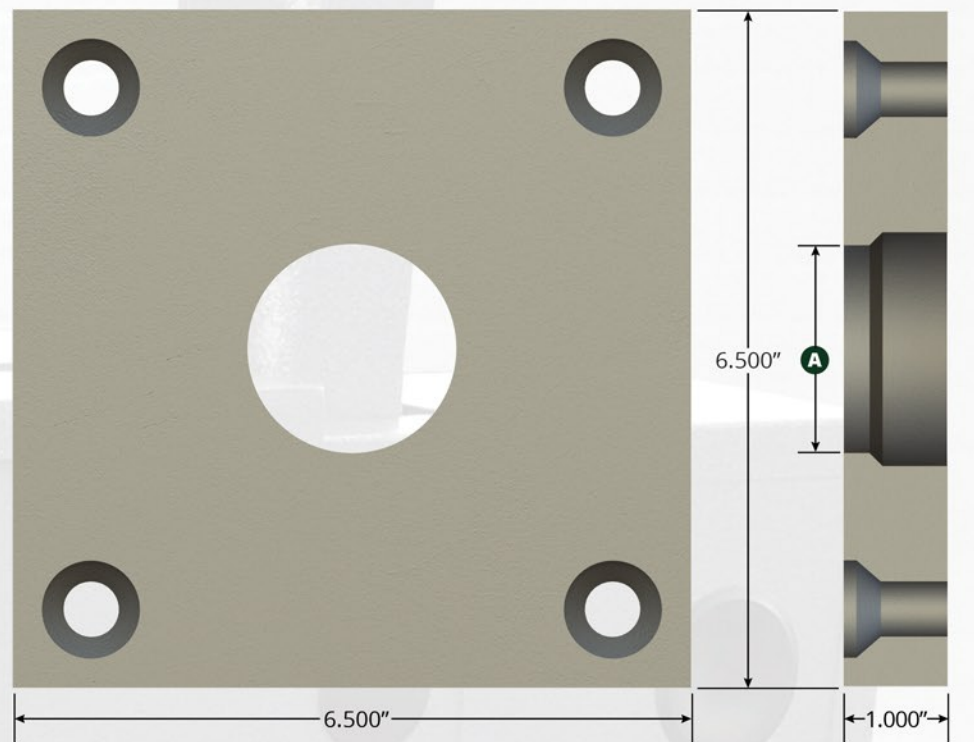
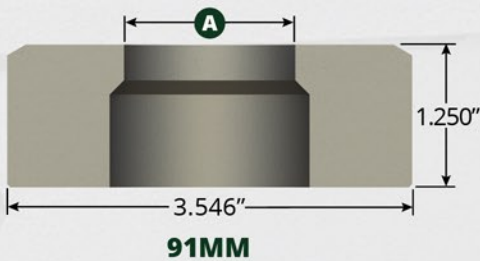
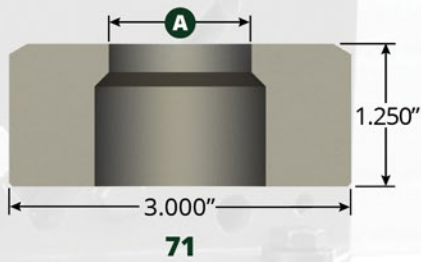
Oversize Punches & Dies



PUNCHES

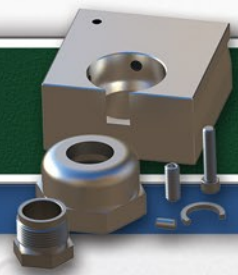


DIES

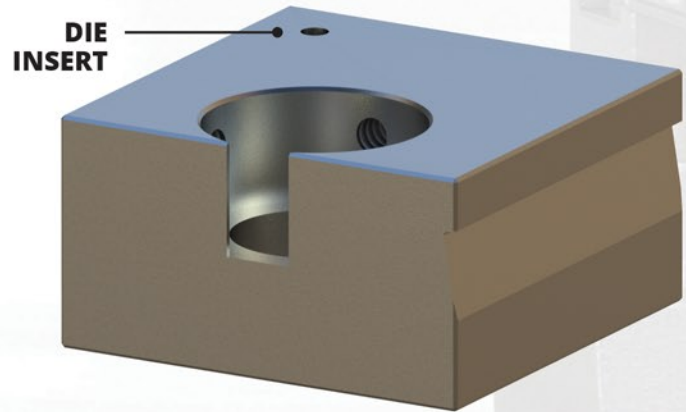
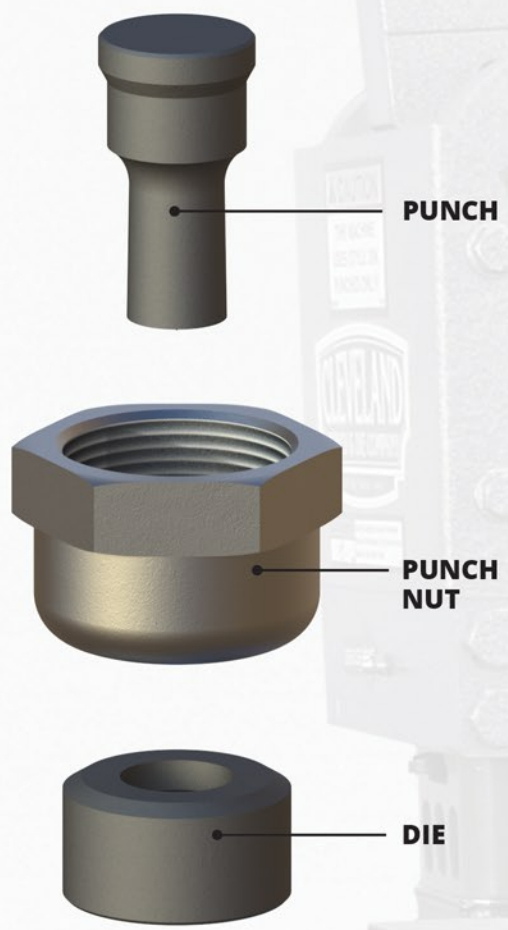


6" X 6"
TOP VIEW

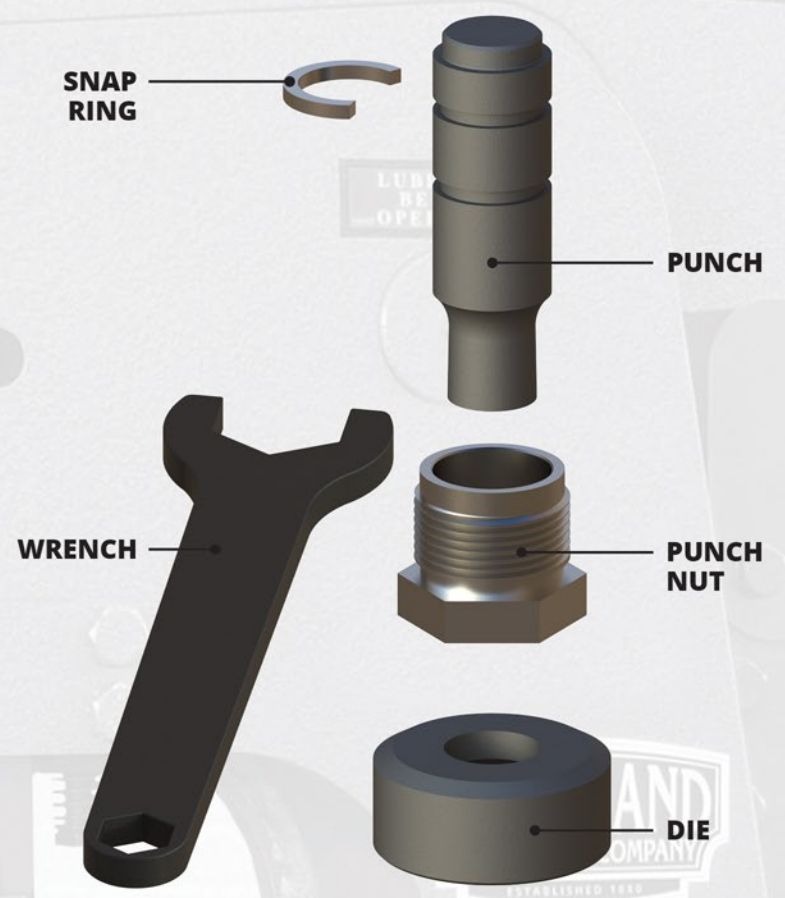
6" X 6"
SIDE VIEW



HEADED STYLE ACCESSORIES



SNAP RING STYLE ACCESSORIES



SNAP RING STYLE ACCESSORIES	
PART #	DESCRIPTION
CPDK0006	SNAP RING
CNSR20	SR20K PUNCH NUT
S10A0069	WRENCH

HEADED STYLE ACCESSORIES	
PART #	DESCRIPTION
CN20D	20 PUNCH NUT
S10R0001	59 DIE INSERT
S10R0002	65 DIE INSERT
S10R0003	71 DIE INSERT

Ask About Hardware For Your Scotchman™ Ironworker.

SHEAR BLADES

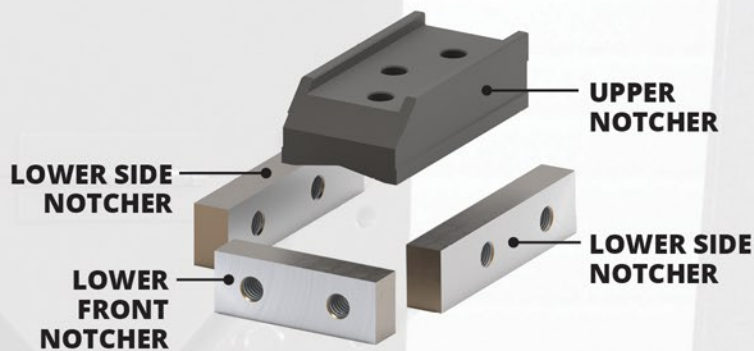
Flat Bars, Notchers, & Angles



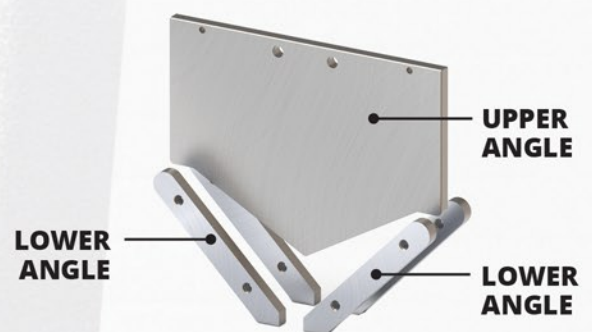
FLAT BAR



NOTCHER



ANGLE



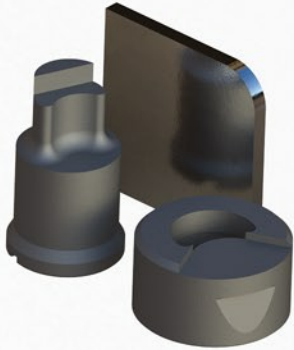
SCOTCHMAN™ IRONWORKERS

BLADES	4014	5014-ET	50514-EC	6509-24M	9012-24M	12012-24M	D0 70/ 110-24M	DO 8514 -20M	DO 95/ 140-24M	DO 120/ 200-24M	DO 135/ 220-24M	DO 150/ 240-24M	FI 8510-20M
FLAT BAR													
UPPER FLAT BAR	S10B0003	S10B0004	S10B0004	S10B0002	S10B0002	S10B0002	S10B0002	S10B0013	S10B0002	S10B0002	S10B0002	S10B0002	S10B0013
UPPER FLAT BAR (NON-DEFORMING)	-	S10B0026	S10B0026	-	-	-	-	-	-	-	-	-	-
LOWER FLAT BAR	S10B0003	S10B0004	S10B0004	S10B0002	S10B0002	S10B0002	S10B0002	S10B0014	S10B0002	S10B0002	S10B0002	S10B0002	S10B0014
NOTCHER													
UPPER NOTCHER	-	S10B0031	S10B0031	S10B0044	S10B0044	S10B0044	S10B0012	S10B0046	S10B0012	S10B0008	S10B0008	S10B0008	S10B0012
LOWER SIDE NOTCHER (2)	-	S10B0032	S10B0032	S10B0045	S10B0045	S10B0045	S10B0015	S10B0048	S10B0015	S10B0009	S10B0009	S10B0009	S10B0015
LOWER FRONT NOTCHER	-	S10B0032	S10B0032	S10B0045	S10B0045	S10B0045	S10B0010	S10B0047	S10B0010	S10B0010	S10B0010	S10B0010	S10B0010
ANGLE													
UPPER ANGLE	S10B0011	S10B0038	S10B0038	S10B0006	S10B0006	S10B0006	S10B0006	S10B0043	S10B0006	S10B0006	S10B0006	S10B0006	S10B0040
LOWER ANGLE (4)	S10B0030	S10B0039	S10B0039	S10B0007	S10B0007	S10B0007	S10B0007	-	S10B0007	S10B0007	S10B0007	S10B0007	-
LOWER ANGLE (2)	-	-	-	-	-	-	-	S10B0042	-	-	-	-	-
LOWER ANGLE	-	-	-	-	-	-	-	-	-	-	-	-	S10B0041
LOWER SHORT ANGLE	-	-	-	-	-	-	-	-	-	-	-	-	S10B0042



CORNER RADIUS

- Generate a specified radius on the corner of material.



STOCK CORNER RADIUS PUNCHES

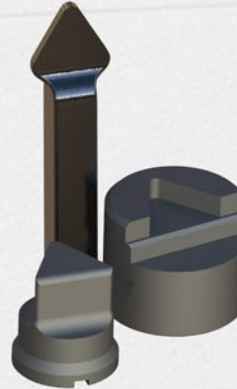
A	20
3/8"	•
7/16"	•
1/2"	•

STOCK CORNER RADIUS DIES

A	59
3/8"	•
7/16"	•
1/2"	•

PICKET

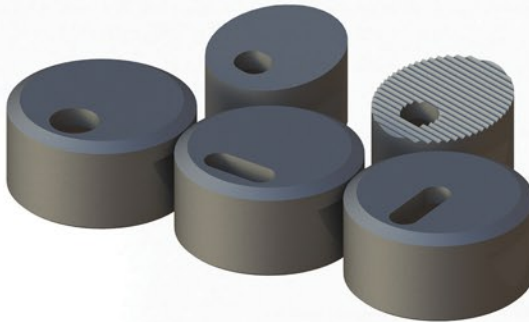
- Generate a spear point on square tubing for fence and ornamental iron.
- Flattens and cuts in one operation.



LUBRICATE
BEFORE
OPERATING

OFFSET, BEVEL, & BEVEL SERRATED DIES

- Offset dies are used to generate holes close to the inside leg of angle iron, I-beam, and channel.
- Plain bevel dies are recommended when punching material that does not have a uniform thickness.

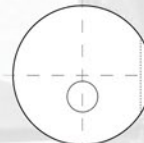


STOCK OFFSET ROUND DIES A-180°

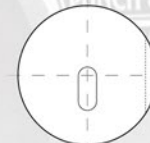
A	59	A	59
9/32"	•	21/32"	•
11/32"	•	11/16"	•
13/32"	•	23/32"	•
7/16"	•	3/4"	•
15/32"	•	25/32"	•
1/2"	•	13/16"	•
17/32"	•	27/32"	•
9/16"	•	7/8"	•
19/32"	•	29/32"	•
5/8"	•		

STOCK OFFSET OBLONG DIES B-180°

A	59
13/32" x 25/32"	•
13/32" x 1-1/32"	•
15/32" x 25/32"	•
15/32" x 1-1/32"	•
17/32" x 1-1/32"	•
19/32" x 25/32"	•
19/32" x 1-1/32"	•
23/32" x 1-1/32"	•
27/32" x 1-1/32"	•



RD. A-180°
STOCK



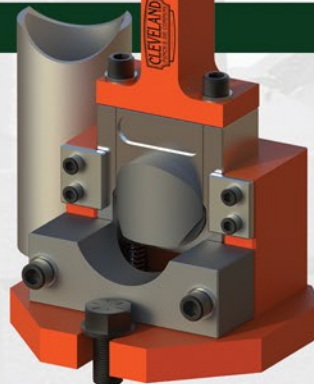
OB. A-180°



OB. B-180°
STOCK

PIPE/TUBE NOTCHER

- Used to notch the end of the pipe or tubing in preparation for fitting and welding.

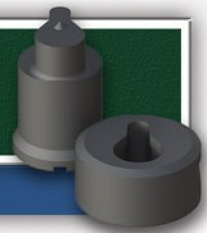


STOCK PIPE NOTCH TOOLING

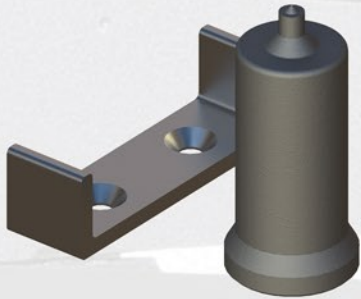
PART #	DESCRIPTION
S10A0068	STRIKER
CPDA0026	HOUSING
CPDA0111	1" SCHEDULE 40 TOOLING
CPDA0112	1-1/4" SCHEDULE 40 TOOLING
CPDA0020	1-1/2" SCHEDULE 40 TOOLING
CPDA0113	2" SCHEDULE 40 TOOLING
CPDA0134	1" SCHEDULE 80 TOOLING
CPDA0065	1-1/4" SCHEDULE 80 TOOLING
CPDA0066	1-1/2" SCHEDULE 80 TOOLING
CPDA0135	2" SCHEDULE 80 TOOLING
CPDN0030	1/2" X 3" DIE SPRINGS

CUSTOM APPLICATIONS

Countersink, Double Step, Keyhole, Lattice Bar, Louver, & Ripping Punch

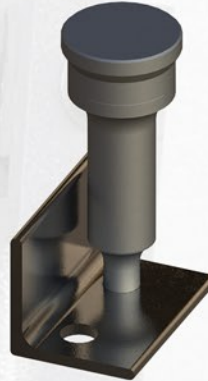


COUNTERSINK



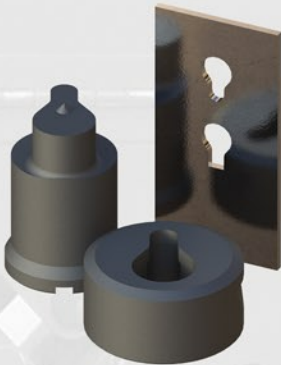
- Punch and form a countersink hole to allow flathead bolts or screws to sit flush with material surface.
- Please provide bolt/screw size and material thickness when ordering.

DOUBLE STEP



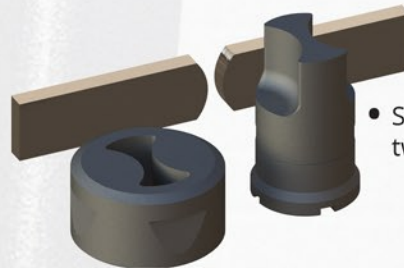
- Punch holes close to the inside leg of angle iron or channel.
- Please provide angle, channel, or I-beam specifications along with hole location when ordering.

KEYHOLE



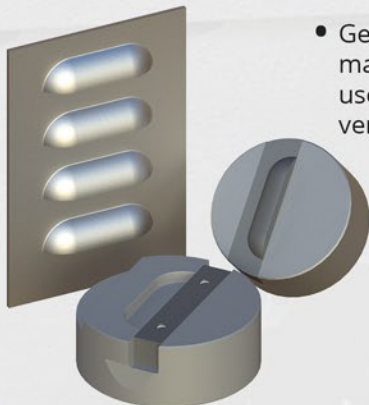
- Used in removable applications where a bolt, chain, or anchor needs to lock in place.
- Common uses include pallet racks, shelving, dump truck bodies, and tow trucks.

LATTICE BAR



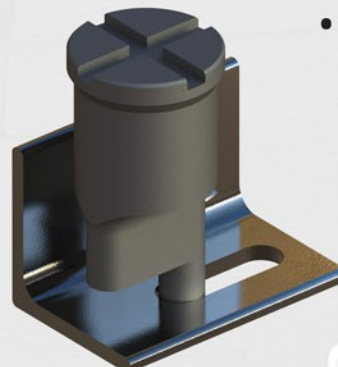
- Shear and generate one or two radii on flat bar material.

LOUVER



- Generate an angled slat in material. Most commonly used to allow for air ventilation.

RIPPING PUNCH



- Produce an elongated hole where the desired length exceeds the machine capacity.

CLEVELAND

PUNCH & DIE COMPANY

ESTABLISHED 1880

STOCK PUNCH CHARTS

Stock Round, Square, Hexagon, & Oblong Punch Charts



STOCK ROUND PUNCHES				
A	SR20K	20	26	C50
1/8"	•	•	•	
5/32"	•	•	•	
3/16"	•	•	•	
7/32"	•	•	•	
1/4"	•	•	•	
9/32"	•	•	•	
5/16"	•	•	•	
11/32"	•	•	•	
3/8"	•	•	•	
13/32"	•	•	•	
7/16"	•	•	•	
15/32"	•	•	•	
1/2"	•	•	•	
17/32"	•	•	•	
9/16"	•	•	•	
19/32"	•	•	•	
5/8"	•	•	•	
21/32"	•	•	•	
11/16"	•	•	•	
23/32"	•	•	•	
3/4"	•	•	•	
25/32"	•	•	•	
13/16"	•	•	•	
27/32"	•	•	•	
7/8"	•	•	•	
29/32"	•	•	•	
15/16"	•	•	•	
31/32"	•	•	•	
1"	•	•	•	
1-1/32"	•	•	•	
1-1/16"	•	•	•	•
1-3/32"	•	•	•	
1-1/8"	•	•	•	•
1-5/32"	•	•	•	
1-3/16"	•	•	•	•
1-7/32"	•	•	•	
1-1/4"	•	•	•	•
1-9/32"		•	•	
1-5/16"		•	•	•
1-11/32"		•	•	
1-3/8"		•	•	•
1-13/32"		•	•	
1-7/16"		•	•	•
1-15/32"		•	•	
1-1/2"		•	•	•
1-17/32"		•	•	
1-9/16"		•	•	•
1-5/8"			•	•
1-11/16"			•	•
1-3/4"			•	•
1-13/16"			•	•
1-7/8"			•	•
1-15/16"			•	•
2"			•	•
2-1/16"			•	•
2-1/8"			•	•
2-3/16"			•	•
2-1/4"			•	•

STOCK SQUARE PUNCHES		
A	20	26
7/32"	•	
1/4"	•	
9/32"	•	
5/16"	•	•
11/32"	•	•
3/8"	•	•
13/32"	•	•
7/16"	•	•
15/32"	•	•
1/2"	•	•
17/32"	•	•
9/16"	•	•
19/32"	•	•
5/8"	•	•
21/32"	•	•
11/16"	•	•
23/32"	•	•
3/4"	•	•
25/32"	•	•
13/16"	•	•
7/8"	•	•
15/16"		•
1"		•
1-1/16"		•

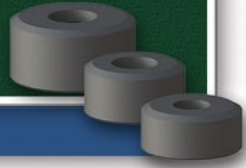
STOCK HEX PUNCHES		
A	20	26
11/32"	•	•
3/8"	•	•
13/32"	•	•
7/16"	•	•
15/32"	•	•
1/2"	•	•
17/32"	•	•
9/16"	•	•
19/32"	•	•
5/8"	•	•
21/32"	•	•
11/16"	•	•
23/32"	•	•
3/4"	•	•
25/32"	•	•
13/16"	•	•
27/32"	•	•
7/8"	•	•
29/32"	•	•
15/16"		•
31/32"		•
1"		•
1-1/32"		•
1-1/16"		•
1-3/32"		•
1-1/8"		•
1-5/32"		•
1-3/16"		•
1-7/32"		•
1-1/4"		•

STOCK OBLONG PUNCHES							
A	SR20K	20	26	A	SR20K	20	26
3/16" x 1"		•	•	17/32" x 1-1/4"		•	•
7/32" x 7/16"		•		17/32" x 1-1/2"			•
7/32" x 1"		•	•	9/16" x 3/4"		•	•
1/4" x 1/2"		•	•	9/16" x 1"	•	•	•
1/4" x 3/4"		•	•	9/16" x 1-1/16"		•	•
1/4" x 1"		•	•	9/16" x 1-1/8"		•	•
9/32" x 9/16"		•	•	9/16" x 1-1/4"		•	•
9/32" x 3/4"		•	•	9/16" x 1-1/2"			•
9/32" x 1"		•	•	5/8" x 1"	•	•	•
5/16" x 1/2"		•	•	5/8" x 1-1/4"		•	•
5/16" x 5/8"		•	•	5/8" x 1-1/2"			•
5/16" x 3/4"	•	•	•	11/16" x 1"		•	•
5/16" x 1"	•	•	•	11/16" x 1-1/16"		•	•
5/16" x 1-1/16"		•	•	11/16" x 1-1/8"		•	•
5/16" x 1-1/4"		•	•	11/16" x 1-1/4"		•	•
5/16" x 1-1/2"			•	11/16" x 1-1/2"			•
11/32" x 11/16"		•	•	3/4" x 1"		•	•
11/32" x 1"		•	•	3/4" x 1-1/4"		•	•
3/8" x 1/2"		•	•	3/4" x 1-1/2"			•
3/8" x 3/4"	•	•	•	13/16" x 1"		•	•
3/8" x 1"	•	•	•	13/16" x 1-1/16"		•	•
3/8" x 1-1/4"		•	•	13/16" x 1-1/8"		•	•
3/8" x 1-1/2"			•	13/16" x 1-1/4"		•	•
13/32" x 13/16"		•	•	13/16" x 1-1/2"			•
13/32" x 1"		•	•	7/8" x 1-1/4"		•	•
13/32" x 1-1/4"		•	•	7/8" x 1-1/2"			•
7/16" x 9/16"		•	•	15/16" x 1-1/16"		•	•
7/16" x 3/4"	•	•	•	15/16" x 1-1/8"		•	•
7/16" x 7/8"		•	•	15/16" x 1-1/4"		•	•
7/16" x 1"	•	•	•	15/16" x 1-1/2"			•
7/16" x 1-1/16"		•	•	15/16" x 1-9/16"			•
7/16" x 1-1/4"		•	•	1" x 1-1/4"		•	•
7/16" x 1-1/2"		•	•	1" x 1-1/2"			•
15/32" x 1"		•	•	1" x 1-9/16"			•
1/2" x 3/4"	•	•	•	1-1/16" x 1-1/4"		•	•
1/2" x 1"	•	•	•	1-1/16" x 1-5/16"			•
1/2" x 1-1/16"		•	•	1-1/16" x 1-1/2"			•
1/2" x 1-1/4"		•	•	1-1/16" x 1-9/16"			•
1/2" x 1-1/2"			•	1-1/8" x 1-1/2"			•
17/32" x 1"		•	•				

A36 MILD STEEL CLEARANCE	
MATERIAL THICKNESS	DIE CLEARANCE
1/4" - 15/32"	1/32"
1/2" - 23/32"	1/16"
3/4" - 31/32"	3/32"
1" and over	1/8"

STOCK DIE CHARTS

Stock Round, Square, Hexagon, & Oblong Die Charts



STOCK ROUND DIES			
A	155	59	65
5/32"	●	●	
3/16"	●	●	
7/32"	●	●	●
1/4"	●	●	●
9/32"	●	●	●
5/16"	●	●	●
11/32"	●	●	●
3/8"	●	●	●
13/32"	●	●	●
7/16"	●	●	●
15/32"	●	●	●
1/2"	●	●	●
17/32"	●	●	●
9/16"	●	●	●
19/32"	●	●	●
5/8"	●	●	●
21/32"	●	●	●
11/16"	●	●	●
23/32"	●	●	●
3/4"	●	●	●
25/32"	●	●	●
13/16"	●	●	●
27/32"	●	●	●
7/8"	●	●	●
29/32"	●	●	●
15/16"	●	●	●
31/32"	●	●	●
1"	●	●	●
1-1/32"	●	●	●
1-1/16"	●	●	●
1-3/32"	●	●	●
1-1/8"	●	●	●
1-5/32"	●	●	●
1-3/16"	●	●	●
1-7/32"	●	●	●
1-1/4"	●	●	●
1-9/32"	●	●	●
1-5/16"	●	●	●
1-11/32"	●	●	●
1-3/8"	●	●	●
1-13/32"	●	●	●
1-7/16"	●	●	●
1-15/32"	●	●	●
1-1/2"	●	●	●
1-17/32"	●	●	●
1-9/16"	●	●	●
1-19/32"	●	●	●
1-5/8"	●	●	●

STOCK SQUARE DIES		
A	59	65
1/4"	●	
9/32"	●	
5/16"	●	
11/32"	●	
3/8"	●	
13/32"	●	
7/16"	●	
15/32"	●	●
1/2"	●	●
17/32"	●	
9/16"	●	●
19/32"	●	
5/8"	●	●
21/32"	●	
11/16"	●	●
23/32"	●	
3/4"	●	●
25/32"	●	
13/16"	●	●
27/32"	●	
7/8"	●	●
29/32"	●	
15/16"	●	●
1"	●	●
1-1/16"	●	●
1-3/32"	●	●
1-1/8"	●	●

STOCK HEX DIES	
A	59
3/8"	●
13/32"	●
7/16"	●
15/32"	●
1/2"	●
17/32"	●
9/16"	●
19/32"	●
5/8"	●
21/32"	●
11/16"	●
23/32"	●
3/4"	●
25/32"	●
13/16"	●
27/32"	●
7/8"	●
29/32"	●
15/16"	●

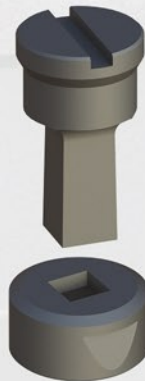
STOCK OBLONG DIES					
A	155	59	A	155	59
7/32" x 1-1/32"		●	19/32" x 1-1/32"		●
1/4" x 15/32"		●	19/32" x 1-3/32"		●
1/4" x 1-1/32"		●	19/32" x 1-5/32"		●
9/32" x 17/32"		●	19/32" x 1-9/32"		●
9/32" x 25/32"		●	5/8" x 13/16"		●
9/32" x 1-1/32"		●	5/8" x 1-1/16"		●
5/16" x 19/32"		●	5/8" x 1-1/8"		●
5/16" x 25/32"		●	5/8" x 1-3/16"		●
5/16" x 1-1/32"		●	5/8" x 1-5/16"		●
11/32" x 17/32"		●	21/32" x 1-1/32"	●	●
11/32" x 21/32"		●	21/32" x 1-9/32"		●
11/32" x 25/32"		●	11/16" x 1-1/16"		●
11/32" x 1-1/32"	●	●	11/16" x 1-5/16"		●
11/32" x 1-3/32"		●	23/32" x 1-1/32"		●
11/32" x 1-9/32"		●	23/32" x 1-3/32"		●
3/8" x 23/32"		●	23/32" x 1-5/32"		●
3/8" x 1-1/32"		●	23/32" x 1-9/32"		●
3/8" x 1-5/16"		●	3/4" x 1-1/16"		●
13/32" x 17/32"		●	3/4" x 1-1/8"		●
13/32" x 25/32"	●	●	3/4" x 1-3/16"		●
13/32" x 1-1/32"	●	●	3/4" x 1-5/16"		●
13/32" x 1-9/32"		●	25/32" x 1-1/32"		●
7/16" x 27/32"		●	25/32" x 1-9/32"		●
7/16" x 1-1/32"		●	13/16" x 1-1/16"		●
7/16" x 1-9/32"		●	13/16" x 1-5/16"		●
15/32" x 19/32"		●	27/32" x 1-1/32"		●
15/32" x 25/32"	●	●	27/32" x 1-3/32"		●
15/32" x 29/32"		●	27/32" x 1-5/32"		●
15/32" x 1-1/32"	●	●	27/32" x 1-9/32"		●
15/32" x 1-3/32"		●	7/8" x 1-1/16"		●
15/32" x 1-9/32"		●	7/8" x 1-1/8"		●
1/2" x 1-1/32"		●	7/8" x 1-3/16"		●
1/2" x 1-1/16"		●	7/8" x 1-5/16"		●
1/2" x 1-5/16"		●	29/32" x 1-9/32"		●
17/32" x 25/32"	●	●	15/16" x 1-5/16"		●
17/32" x 1-1/32"	●	●	15/16" x 1-9/16"		●
17/32" x 1-3/32"		●	31/32" x 1-3/32"		●
17/32" x 1-9/32"		●	31/32" x 1-5/32"		●
9/16" x 13/16"		●	31/32" x 1-9/32"		●
9/16" x 1-1/32"	●	●	1" x 1-1/8"		●
9/16" x 1-1/16"		●	1" x 1-3/16"		●
9/16" x 1-1/8"		●	1" x 1-5/16"		●
9/16" x 1-3/16"		●	1-1/32" x 1-9/32"		●
9/16" x 1-9/32"		●	1-1/16" x 1-5/16"		●
9/16" x 1-5/16"		●	1-3/32" x 1-9/32"		●
19/32" x 25/32"		●	1-1/8" x 1-5/16"		●

KEYWAY & NOTCH OPTIONS

Shaped punches & dies can be located with keyways or notches.

SINGLE KEYWAY

CROSS KEYWAY



ONE NOTCH



TWO NOTCHES



☎ **USA:** 800-451-4342

☎ **International:** 330-296-4342

☎ **Fax:** 800-451-6877

💻 **Visit:** www.clevelandpunch.com

✉ **Email:** sales@clevelandpunch.com

📍 **Address:** 666 Pratt Street, Ravenna, OH 44266

THE WORLD LEADER IN THE TOOLING INDUSTRY

Be a Part of Our Industry's Largest Online Community

Our Instagram, Facebook, and YouTube pages are full of valuable information on how to fully utilize your punching machine. While you're there, share your work and develop new relationships with others like yourself.

📷 [clevelandpunchdie](#)

📘 [cleveland.punch](#)

📺 [Cleveland Punch & Die Company](#)

Copyright © 2021 Cleveland Punch & Die. All rights, including without limitation all copyrights, in and to this catalog are owned solely and exclusively by Cleveland Punch & Die. Reproduction, distribution, or transmission of any part of this catalog, by any means or in any form of media, without the prior express written consent of Cleveland Punch & Die is strictly prohibited. All rights reserved.

Scotchman™ Ironworkers is a registered trademark of Scotchman™ Industries. Use of the Scotchman™ registered trademark and name in this catalog is for informational purposes only. It is the intention of Cleveland Punch & Die to recognize and provide credit to the fullest extent possible.