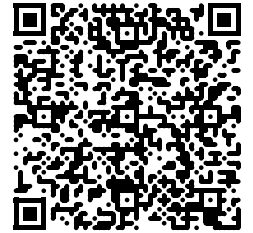


Hobitat
Professional Cleaning Supplies



#A10016

Rotary Floor polish and scrub machine



<https://www.cleaninghub.co.za/products/floor-polish-and-scrub-machine>

Table of Contents

1. Specifications	1
2. Caution	1
3. Instructions	2
4. Troubleshooting	4
5. Maintenance	5
6. Diagrams	6
7. Warranty	7

1. Specifications

Property	Value	Unit
Voltage	220-240	V
Frequency	50	Hz
Power	1200	W
Brush Speed	154	RPM
Motor Speed	1400	RPM
Cable Length	12	m
Base Diameter	430	mm
Max. Tank Capacity	16	l

2. Caution

Attention

- Before operation, please read this manual carefully in order to ensure correct operation of this machine. If you have any questions please contact CSC101 (Pty) Ltd T/A Cleaning Hub for additional information.

Power

- Please check to ensure the mains voltage is identical to the rated voltage marked on the nameplate before connecting the power cable.
- Pull out the power plug while not in use and wire the power cable properly, if it is not correctly wired.
- Check to ensure the power cable is undamaged before using.
- If the power cable was damaged or the machine is faulty, let a professional change or repair it, to prevent further damage.
- Never use spare parts from other companies, otherwise CSC101 (Pty) Ltd T/A Cleaning Hub will not be able to assist with any guidance.
- Do not use the machine outdoors while raining in order to avoid a short circuit and an electrical shock accident.
- Keep the machine in a dry place while not in use.
- Make sure the power plug is clear from any heavy items resting on it.
- Unplug the machine from mains before any maintenance and cleaning.

Safety

- This appliance does not intend to be operated by weak or psychotic individuals unless they are under correct directions or assistance from ones with responsibility for their safety.
- Children should be instructed strictly to always keep away from this machine.
- If at any point the machine is beyond control, simply release the handle entirely, the switches will switch off and the machine will stop
- DO NOT ATTEMPT TO HOLD ONTO THE MACHINE IF IT IS BEYOND CONTROL, LET GO!

3. Instructions

Mount brush and pad

- Hold the handle upright and tilt the scrubbing machine to load the proper brush or cleaning pad counter-clockwise onto the motor clip.

Mount water tank on the handle

- Place the scrubbing machine on the ground horizontally and keep handle vertical.
- Loosen upper and lower clips of the water tank and put the tank onto the handle, adjust the position of the tank on the handle.
- Tighten the water tank (screws have to be tightened, otherwise during operation the tank might fall off and cause damage), then connect one end of the plastic pipe to the outlet of the tank, and the other end to the inlet of the machine base.

Adjustment of handle

- Put the scrubbing machine on the surface to be cleaned, pull up the handle adjustment lever, adjust the handle to a proper working position (usually belt-height) to ensure correct posture and arms slightly bent when operating.
- Then loosen the handle adjustment lever, and move the handle up-and-down to check if the handle is locked in place by the adjusting gear.
- The machine will not start when following the startup procedure if the handle is in the upright position as there is a safety mechanism to prevent the machine from being started in this position.



1. 48201

ROTARY 425 STARTING CAPACITOR

2. 48202

ROTARY 425 RUNNING CAPACITOR

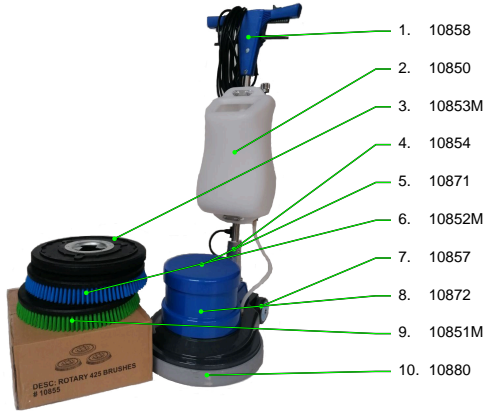
7. Warranty

Scrubbing Machines

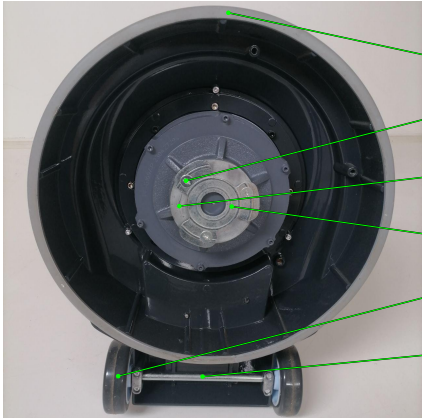
Days valid: 180

- The machine must not be plugged into an extension cord
- Ensure that the machine has a dedicated power outlet that is not shared with any other appliances
- The machine must not get wet
- The machine must be cleaned after use to prevent hardening of residues

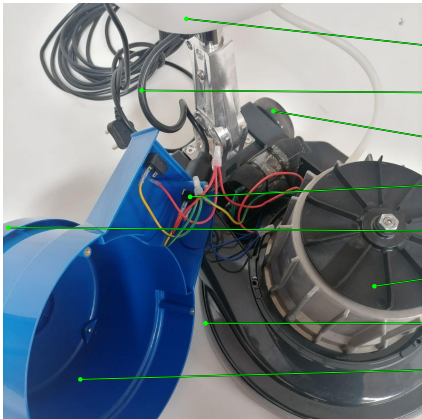
6. Diagrams



- 1. 10858 ROTARY 425 HANDLE BOX FRONT & BACK
- 2. 10850 ROTARY 425 TANK
- 3. 10853M ROTARY 425 PADDRIVE METAL CATCHPLATE
- 4. 10854 ROTARY 425 HANDLE
- 5. 10871 ROTARY 425 COVER TOP (SMALL) (NO. 50)
- 6. 10852M ROTARY 425 CARPET BRUSH METAL CATCHPLATE
- 7. 10857 ROTARY 425 WHEEL
- 8. 10872 ROTARY 425 COVER TOP (BIG) (NO. 51)
- 9. 10851M ROTARY 425 FLOOR BRUSH METAL CATCHPLATE
- 10. 10880 ROTARY 425 BASE RUBBER



- 1. 10880 ROTARY 425 BASE RUBBER
- 2. 10874 ROTARY 425 PLATE SCREWS SET OF 3
- 3. 10878 ROTARY 425 DRIVE HUB (NO. 61)
- 4. 10873M ROTARY 425 DRIVE PLATE METAL (NO. 62)
- 5. 10857 ROTARY 425 WHEEL
- 6. 10869 ROTARY 425 WHEEL AXLE



- 1. 10850 ROTARY 425 TANK
- 2. 10876 ROTARY 425 INTER CABLE (NO. 16)
- 3. 10857 ROTARY 425 WHEEL
- 4. 10877 ROTARY 425 SOCKET (GREY CABLE) (NO. 52)
- 5. 10871 ROTARY 425 COVER TOP (SMALL) (NO. 50)
- 6. 10859 ROTARY 425 FAN
- 7. 10880 ROTARY 425 BASE RUBBER
- 8. 10872 ROTARY 425 COVER TOP (BIG) (NO. 51)

Load water/solution

- Load water or solution into water tank according to required demand.
- It is important to mix the solution and water BEFORE loading it into the tank.
- The tank is not for mixing the solution, if concentrate is loaded directly into the tank or the solution is too strong, the sealing valve at the bottom of the tank will corrode away.
- The solution must be very clean, otherwise the valve at the bottom will be blocked and/or damaged due to friction within the valve causing it to corrode.

Wiring

- Connect base wire to the power plug of the handle.
- Check to ensure the voltage is identical to the rating voltage, then connect the power cable into the socket.
- The machine must not be plugged into an extension cord

Switching on

- Power is controlled by the left and right switch lever.
- For the sake of safety, the startup switch lever work jointly with the safety interlock lever, push the safety interlock lever from the middle to the bottom while pressing the switch lever.
- Let go of the the safety interlock lever after scrubbing machine startup.

Direction control

- After the scrubbing machine started up, pull up or press down the handle slightly, the scrubbing machine will move to the right or left automatically.
- Pressing down on the handle will increase the rear pressure of the drive plate, thus making the scrubbing machine move to the left.
- Pulling up on the handle will increase the forward pressure of the drive plate, thus making the scrubbing machine move to the right.

Water dispersion

- After startup the water can be dispersed to the floor/carpet surface.
- A tap at the top of the tank can be turned which will open the valve inside the tank at the bottom.
- Whenever too much solution is dispersed or work is finished and solution is no longer required, turn the tap in the opposite direction to close water flow again.

After usage

- After usage the tank must be drained of excess solution.
- The tank can be drained by disconnecting the transparent pipe from the tank at the base of the machine and letting it flow to a drain outlet or bucket for disposal.
- The brush plate MUST be removed and rinsed.
- If a solution with chemical compounds were used the drive plate of the machine must be rinsed to prevent continued corrosion to the machine.

4. Troubleshooting

Machine does not start

- Is the machine handle in the upright position? Lower it to belt height and try again
- Evaluate the integrity of the cable whether it is damaged
- Does it make a low-pitch noise? Was the brush plate removed after usage the last time used? The residues could have corroded the shaft stuck and must be loosened

Water does not flow

- Check the inside of the tank for dirt/hair
- Feel if there is a scratching feeling when turning the tank tap
- Clean out the tank and remove the valve inside, strip it apart, clean every component, and put back again

Water does not stop flowing

- The valve is damaged
- Try to take out the valve, take it apart, clean every component, put it back together and put it back into the tank
- There is a chance that limited usage might be recovered, but at this point the damage to the components is usually too much

The machine trips the mains power

- If the earth-leakage is tripped, consult CSC101 (Pty) Ltd T/A Cleaning Hub or an electrician as either the Earth wire is damaged or a short occurs with another wire

- If the wiring is intact, it is possible the capacitor(s) have worn out and needs replacement. To reiterate, do not use the machine with an extension cord as this behaviour occurs with bad power supply to the machine

A loud scratching noise when the machine is running

- Often the machine is used as a chair to be sat on or to pack things or to stand on, which should not happen
- When this is done, the top motor housing's inner joints break and the cover sits directly on the fan keeping the motor cool
- The best remedy is to remove the cover and replace new

5. Maintenance

Cleaning

- Regular cleaning, especially after usage, is critical to a long service life of the machine
- Do not wash the machine by spraying water on it, use a cloth and brush

Usage

- Maintain a good duty cycle of usage, an acceptable duty cycle would be 50%, that is, for every 1 hour worked the machine must cooldown 1 hour