

PROFESSIONAL EYEBROW LAMINATION TREATMENT PROCEDURE

Procedure - Step by step



InLei® BROW BOMBER is a revolutionary- professional eyebrow treatment designed to make the hair of the eyebrow obedient, soft, silky and nourished. It is a treatment reserved for professional brow artists. This treatment is well known as 'Brow Lamination'.

TO BE ABLE TO DO THE TREATMENT CORRECTLY, YOU WILL NEED:



- excellent products (from the InLei® Brow Bomber line of course, as our products are made to work in synergy with each other).

In these few steps we have laid out the essentials so that you can adapt using our high quality- Italian made products!

NO need to use plastic wrap for this product to work!

BROW BOMBER PROCEDURE STEPS

1 PREP THE BROWS



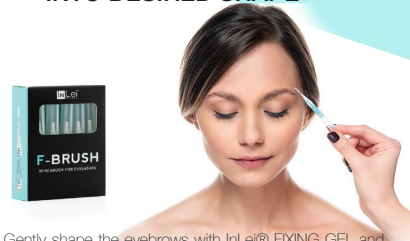
1. Use InLei® MOUSSE gentle cleanser to remove make up and cleanse the clients brows.
2. With the help of InLei® SALINE PRETREATMENT prepare the eyebrows for the BROW BOMBER treatment.
3. Comb the eyebrows neatly and/or in the desired direction.

2 USE INLEI® "BROW LIFT 1" (PERM)



1. Apply an even layer of InLei® BROW LIFT 1 to all hairs with the help of a brush. (Ex: InLei® 'F' Brush).
2. Leave on:
thin hair **6-8 min** | medium hair **8-10 min** | thick hair **10-12 min**.
3. Remove everything with a dry cotton pad.

3 SHAPE & FIX THE BROWS INTO DESIRED SHAPE



1. Gently shape the eyebrows with InLei® FIXING GEL and the InLei® F-Brush comb.
2. Position the hair to cover any gaps and balance the height of the arch.
3. Change the direction of the hair very carefully and never exceed 65° from the natural direction.

4 POSITIONING INLEI® "BROW LOCK 2"



1. Apply InLei® BROW LOCK 2 solution evenly to all hairs with the help of a brush.
2. Leave on for **5-8 minutes**.
3. At the end of the application time, remove with a damp cotton pad.

5 TINTING THE BROWS



1. Prepare the InLei® Tint (read the package insert for the full tinting instructions).
2. Place the tint on the eyebrows accurately and precisely, leave on for **6-12 min** - covering every hair. The application time depends on the type of hair to be colored. At the end of the time, remove the tint with a dry cotton pad.
3. For a three-dimensional (gradual) effect it is recommended to remove the dye from the beginning of the eyebrow **1-2 minutes** earlier than the rest of the arch.

6 INLEI® BROW BOMBER STEP 3- THE MAGIC POTION



1. InLei® Brow Bomber is used after steps #1, #2 & tint.
2. You only need to squeeze a few drops of the product from the bottle to cover both brows.
3. With the help of a brush/ or lip wand, place the product onto the brows, leave on for **5 min**. Then remove the excess (if necessary) by dabbing with a tissue.
4. It does not need to be rinsed.