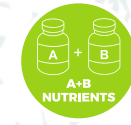


Hydroponic System

Quick Start Guide

- Full Season Home Garden
- Quick-growing
- Year-round herbs & veggies supply

Features



Adapter Input: 100-240VAC, 50/60Hz
Adapter Output: 12VDC 2.0A

Hydroponic System Instructions

WARRANTY PERIOD AND CONDITIONS

We devote special attention to selecting high-quality materials and use manufacturing techniques that enable us to create designer and durable product ranges.

The warranty covers product breakdowns and malfunctions under the condition that the product is used in accordance with its intended use and subject to installation and maintenance in accordance with good practice and the information contained in the user's manual.

This contractual warranty does not cover defects and damage caused by the natural wear and tear of parts, bad weather, flooding, heat releases, freezing, damage caused by water quality (hardness, aggressiveness, corrosion, etc.), by the presence of foreign bodies transported by water or otherwise (sand, filings, etc.) or the lack of room ventilation, and damages that could be the consequence of improper use, misuse, negligence, accident or maintenance that is defective or does not comply with good practice or the information in the user's manual.

The following are also excluded from the warranty: harmful consequences due to the use of accessories and/or non-original equipment manufacturer or improper replacement parts, disassembly or product modification.

SAFETY

These instructions are for your safety. Please read through them thoroughly prior to installation and retain them for future reference.

It is recommended to have a regular schedule of care and maintenance to keep the surface condition well.

Package Including



Hydroponics Garden Kit



A+B Plant Food



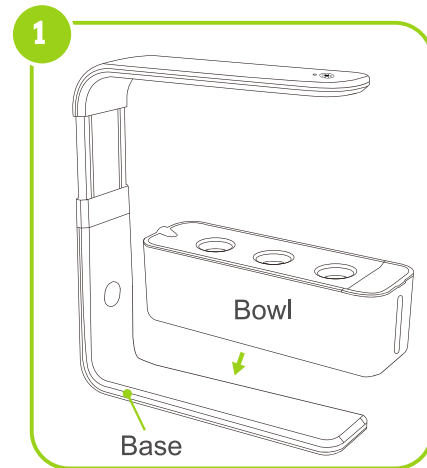
DC 12V 2A Output Adapter



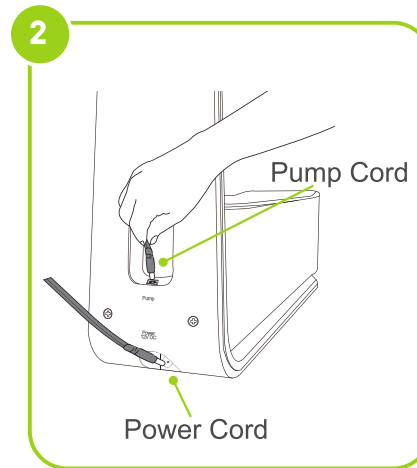
3PCS Pots Kit

5 EASY STEPS

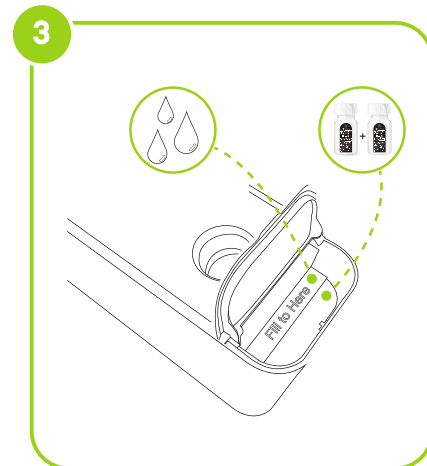
To Get Your Garden Up



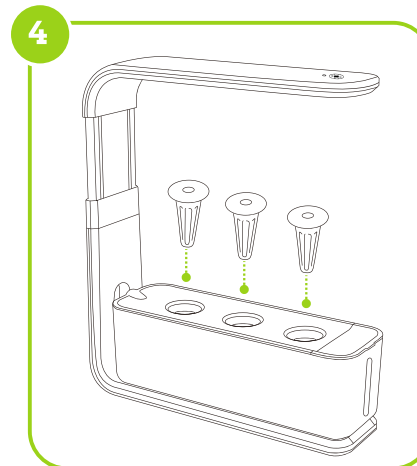
Place the bowl securely on the base.



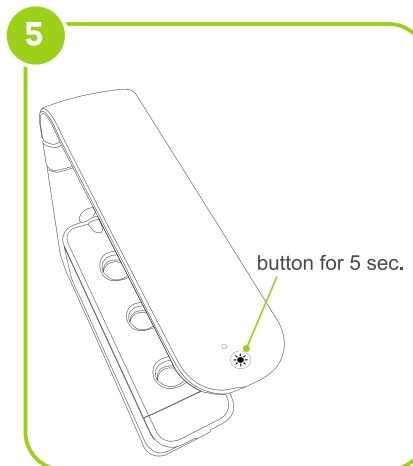
Make sure that pump cord is plugged in. Then plug in the power cord adapter.



Add water and plant food through the feeding window.



Place seed pods into the bowl.



Press the button for 5 sec. to start your hydroponic system.

NEXT: Planting Your Garden

Before planting, Please press the "☀️" button for 5 sec.

"☀️" Setting is a quick setup path to starting a new garden. LED timer pump will be reset once you press it for 5 sec.

1. Watering

- Add water through the feeding window till "Fill to Here".
- It's okay to add water to the indicator line any time. Keep the water topped up for quick growing.
- It's better to use RO water than Tap water.
- Your pump cycle is set to be ON for 14 hours and OFF for 10 hours.

2. Add Nutrients

- Fill the bottle containing the solid nutrients with RO water and shake the bottle to fully mix the content.
- Add 5 ML of both A and B nutrients each in 1L of RO water to prepare the final solution.

3. Growing Lights

- Hydroponic System has a built-in lighting timer. Once you set up, it will automatically turn on and off every day.
 - ON for 7 hours and OFF for 5 hours everyday.
 - Touch the button to temporarily turn on the light(It will not affect the lighting timer)
- If you want to change the timings of the lights, simply press the "☀️" button for 5 sec and your grow lights will turn on at this time.

4. Note

- Please do not use any other growing medium like cocoa peat, soil, coco coir, etc
- If you're growing leafy greens, then remove the grow cubes after the plant fully matures (4-6 months) and use new one to grow again.

SPECIFICATIONS

Grow Light	Power	15W
	LED Color	44* Daylight White, 12* Red & 4* Blue
Adapter	Input	100-240V AC, 50/60Hz
	Output	12V DC 2.0A