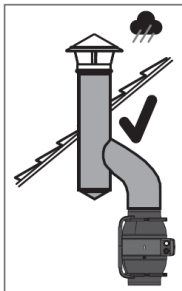
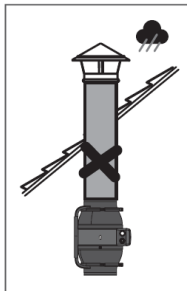
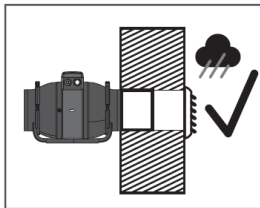
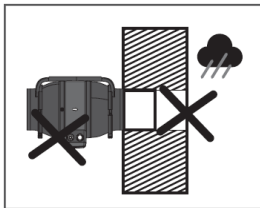


# SwiftAir

**Please make sure all power is off when installing or working around the unit.  
Only to be installed by a qualified electrician**

**ATTENTION!** In order to avoid damage to the fan, do not simultaneously connect a phase of the supply mains to terminals L1 and L2.  
**ATTENTION!** All work on installation and connection of fans should be carried out only with the mains voltage removed.



**ATTENTION!** It is prohibited to install and to use Swift XPRO fan with the terminal box facing down.

**ATTENTION!** The level of inclination of the Swift XPRO fan terminal box should not be lower than the central axis.

**ATTENTION!** In case of non-compliance with these requirements, the IP44 degree will not be provided.

## Safety requirements

According to the shock-hazard protection type, the fans refer to Class II devices (for models 100-200), Class I (for models 250-315), in accordance with GOST 12.2.007.0 -75. The degree of the fan protection against access to hazardous parts and water ingress is IP44 and the degree of the motor protection is IP44.

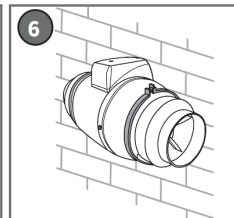
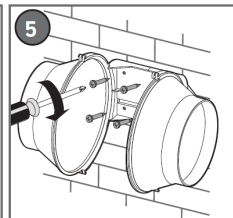
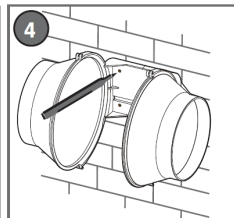
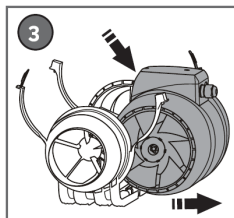
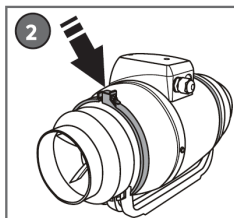
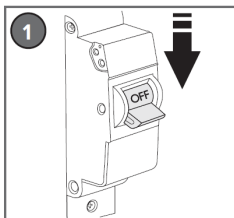
**ATTENTION!** The fan should not be operated outside the specified temperature range (from -10 °C to +55 °C). It is forbidden to install the fan in the same ventilation line with the smoke injector pipe from devices with fuel burners

**ATTENTION!**

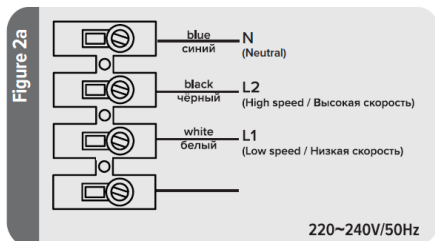
- All work on installation and connection of fans should be carried out only with the mains voltage removed.
- The fans shall be connected by electricians who have a special permit for the work performed. Means for disconnecting from the mains supply should be built into the fixed wiring, in accordance with the installation regulations. The disconnecting device should disconnect all poles. The grounding conductor should not break.

The device is not intended for use by persons (including children) with reduced physical, mental capacity, or mental abilities or lack of experience or knowledge, unless they are supervised or instructed to use the device by a person responsible for their safety. Children should be supervised to ensure that they do not play with the device.

1. Disconnect power supply.
2. Open the clamp by pulling the tab upwards.
3. Remove the fan casing from the base.
4. Attach the base to the mounting surface and mark the screw hole.
5. Drill holes; fix the fan base to the mounting surface with screws.
6. Install the body by tightly connecting the clamp.



Wiring connection diagram for models with flange diameter 100-200 (for fans without speed switch button)



Wiring connection diagram for models with flange diameter 100-200 (for fans with speed switch button)

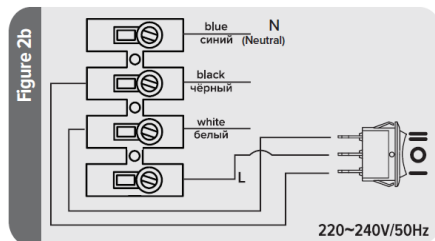
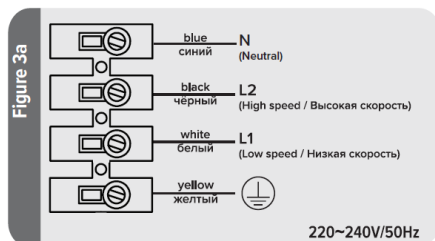
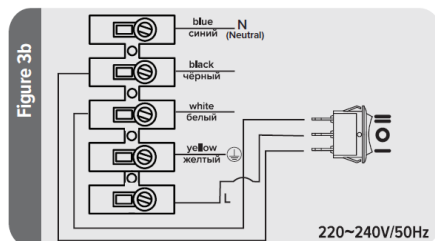


Figure 2.

Wiring connection diagram for models with flange diameter 250, 315 (for fans without speed switch button)



Wiring connection diagram for models with flange diameter 250, 315 (for fans with speed switch button)



**Warranty**  
XPRO Comes with a 1 year warranty  
for an extra 2 years please ask the electrician to fill in the below:

Name:  
Company Name:  
Address:  
Date of installation:  
\*Invoice of installation must be provided as proof  
We advise keeping this by the fan\*.