

# INSTALLATION INSTRUCTIONS

## Quiet Fan Range - IPX5 - SWQ100

**Switch off mains supply before making any electrical connections.**

**Installation must be completed by a qualified electrician.**

**This appliance can't be used by children and persons with reduced physical, sensory and mental capabilities or lack of experience and knowledge if they have been given supervision or instruction concerning the use of the appliance in a safe way and understand the hazards involved.**

**Children shall not play with the appliance.**

**Cleaning and user maintenance shall not be made by children without supervision.**

**Precautions must be taken to avoid the back-flow of gases into the room from the open flue of gas or other open-fire appliances when mounted in outside windows or walls.**

**Fan must be disconnected from electrical power before any maintenance is carried out.**

### Location

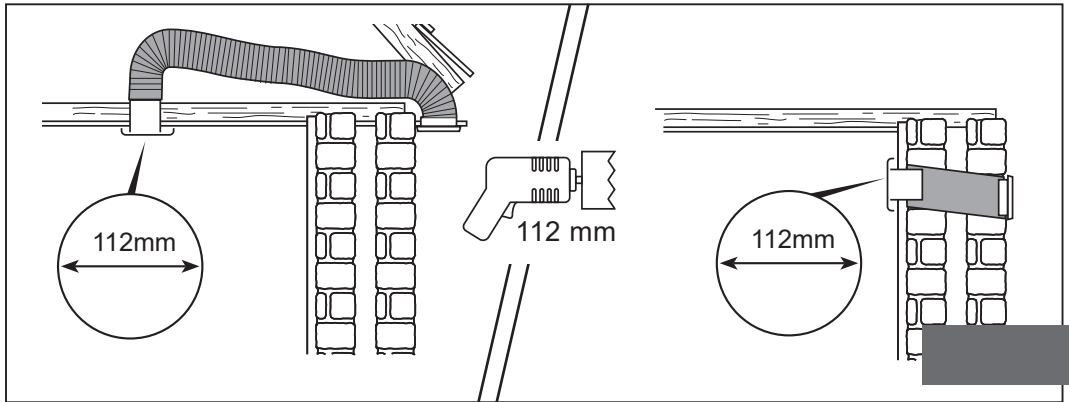
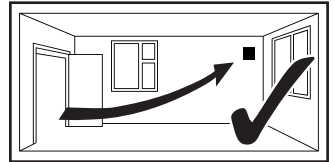
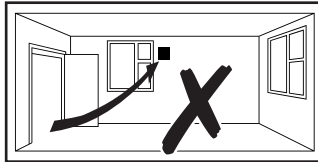
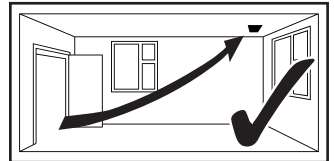
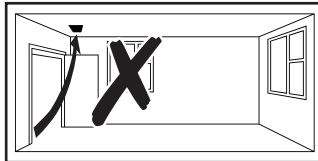
1. When installing fan through a wall, a external wall grille must be fitted.
2. For best results this Extractor Fan should be fitted as high on the wall as possible, or if preferred, on the ceiling.
3. ensure the electronic circuit board is at the top of the fan.
4. If the fan is installed in a room containing a fuel burning appliance, the installer must ensure that the air replacement is adequate for both the fan and the fuel burning appliance.
5. Where fans are used to handle moisture-laden air, such as a bathroom, a condensation trap should be fitted in vertical ducts.

All electrical work is to be carried out by a qualified electrician

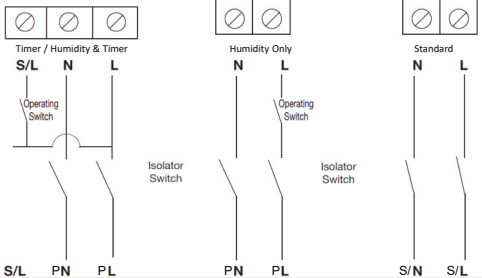
### Wiring

1. Switch off mains supply before making electrical connections. If in any doubt contact a qualified electrician.
2. These units are for fixed wiring only. A flexible cord must not be used. All wiring must be fixed securely and the cable to the fan should be a minimum of 1mm<sup>2</sup> in section. All wiring must comply with current I.E.E. Regulations or local regulations if outside the UK.
3. A double pole fused spur having contact separation of at least 3mm in all pole must be used and fitted with a 3A fuse.
4. This fan is double insulated and does not require an earth connection.

All electrical work is to be carried out by a qualified electrician



To access terminals on these models, lift off control cover

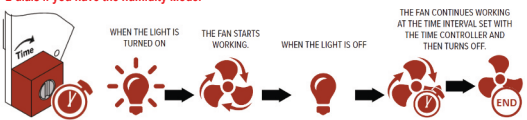


S = Switched P= Permanent L= Live N= Neutral  
Please always check makings on fan, wiring diagram is an example for reference. (Some fans may be different)

**The setting of the timer**

The working period of the timer (from 15 sec to 45 min) is set by means of rotating the TIME controller on the circuit board with a flat screwdriver with a 3mm slot. The left-most position corresponds to 15 sec, the rightmost position corresponds to 45 min.

**2 dials if you have the humidity Model**



**WARNING: ISOLATE ELECTRICITY SUPPLY BEFORE STARTING WORK**  
DO NOT INSTALL IN SHOWER CUBICLES (ZONES 0 or 1)  
MAXIMUM ROOM TEMPERATURE 40°C

All electrical work is to be carried out by a qualified electrician