

SwiftAir

T timer
H humidity sensor

WIRING INSTRUCTIONS

It is recommended that the fans be connected into the lighting circuit, with double pole (3mm) isolation provided before the room light switch and suitably fused, in accordance with current IEE Regulations.

Window mounted fans should be connected to power supply using a flexible cord with conductors of between 0.75mm² and 1.5mm² only. Wall and ceiling mounted fans for fixed wiring should be connected to the power supply via a cable with solid conductors of 1mm² to 1.5mm² only.

Window / Wall Fan

These high quality extractor fans are designed to provide effective ventilation and in order to achieve this, please read these instructions carefully BEFORE installing the fan unit. Failure to comply with these instructions could reduce the life of the product and may invalidate the warranty.

This product is suitable for use with up to 1.5 metres of ducting.

WARNING: ISOLATE ELECTRICITY SUPPLY BEFORE STARTING WORK

Some inline fans may come pre-wired to UK/EU plug

All electrical work is to be carried out by a qualified electrician

The fans are designed for connection to AC mains voltage 220-240 V (for a 12V fan with 12V option), frequency 50 Hz.

CLEANING

Disconnect power supply before cleaning.

It is important to clean fans regularly as cleaning helps maintain performance and ensure safe, reliable operation.

The front cover can be removed from the fan and gently washed in warm water, dry thoroughly.

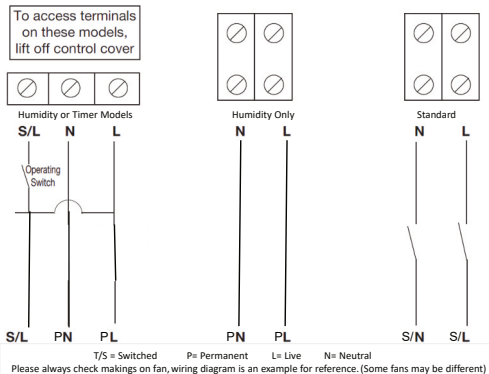
The interior of the fan can be dusted with a soft brush. Do not use water.

On humidity control models, please ensure that no water enters the sensor grille.

Safety requirements

Base on type of protection from electric shock the fans relate to the devices of class II (220-240V/50Hz) or class III (12V/50 Hz). The climate category «moderately cold» Type «4» (YX/14). The level of protection against solid objects and water is IP 24.

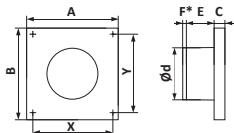
Always check PCB for wiring configuration



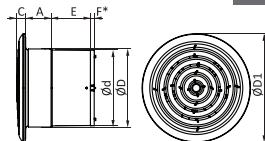
The setting of the timer

The working period of the timer (from 15 sec to 45 min) is set by means of rotating the TIME controller on the circuit board with a flat screwdriver with a 3mm slot. The left-most position corresponds to 15 sec, the rightmost position corresponds to 45 min.

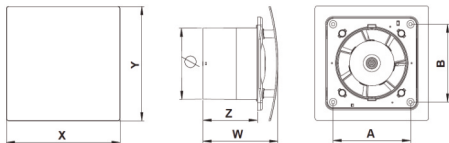
**WARNING: ISOLATE ELECTRICITY SUPPLY BEFORE STARTING WORK
DO NOT INSTALL IN SHOWER CUBICLES (ZONES 0 or 1)
MAXIMUM ROOM TEMPERATURE 40°C**



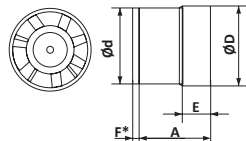
Model	d	A	E	B	C	X	Y	F*
SA100	100	150	55	150	22	135	135	7
SA125	125	175	61	175	23	160	160	8,5
SA150	150	200	62	200	24	185	185	10
SAS100A	100	160	62	160	30	140	140	7
SAS125A	125	187	66	187	30	160	160	8,5
SAS150A	150	213	70	213	30	187	187	10
SDSC100	100	159	48	159	37-46	125	125	7



Model	d	D	D1	E	A	C	F*
SFD100	100	103	143	52	33	11	8
SFD125	125	128	164	58	34	12	10
SFD150	150	153	200	69	42	13	10



INDEX / ИНДЕКС	Ø	A	B	X	Y	W	Z
SCT100	100	109	109	160	160	102	77
SCT125	125	137	137	200	200	102	77
SNB/SNI	100	109	109	160	160	102	77
STY100	100	135	135	170	170	112	74



Model	d	D	A	E	F*
S100	100	103	80	30	8
S125	125	128	87	30	10
S150	150	153	104	35	10