



*Custom Collars*  
BOUTIQUE  
Design Catalog

Table of Contents

Hunt Coats	2-3
Hunt Shirts & Dickies	4
Suits & Vests	5-6
Western Shirts	7-9
Ranch Vests & All Day Suits	10
Sizing Charts	11



# Hunt Coats

Hunt Coat  
Collar & Lapel Options



Jacket Fabric Collar



Suede Collar



Pattern Silky Collar



Two Tone Option

Choose a coordinating suiting fabric, velvet, suede or silky fabric. This is used on the jacket collar, lapel and pocket flaps



Velvet Collar



Velvet Collar



Pattern Silky Collar

Hunt Coat  
Collar & Lapel Trim Options

We offer hundreds of colors of solid and pattern trims to choose from. Velvet and Suede can also be used as trims.



No Trim on Collar or Lapel



Rolled Trim on Collar & Lapel



Flat Trim on Collar & Lapel



Flat Velvet Trim on Lapel



## Hunt Coat Pocket Options



No Pocket Trim



Contrasting Pocket



Pocket Top Trim



Rolled Edge Trim



Flat Edge Trim



Contrasting Pocket +  
Pocket Top Trim

## Hunt Coat Button Options



Cloth Covered Buttons



Bronze Metal Button



Silver Metal Buttons



Suede Buttons



Velvet Buttons



Contrasting Fabric  
Buttons



## Hunt Shirts & Dickies

### Custom Hunt Shirt

Choose your fabric, zip or button up and two customized collars.  
Can be ordered in a stock size or made-to-measure.

### Custom Signature Dickie

Choose your base fabric and design your two customized collars.  
Can be ordered in child size, regular or large.



#### Collar Design Options



1. Filled in V + Ribbon

2. Filled in V

3. Top & Bottom Trim



7. Double X

8. Diamond

9. Diamond + Trim

#### Collar Design Options



4. Thin Accent Band

5. Thick Accent Band

6. Filled in V + Trim



10. Two Thin Middle Bands  
\*Placket Trim Example

11. Filled in X

12. X with 2 Colors





SUITS  
& VESTS

Suit & Vest Styles



Single Breasted  
Three Button

Double Breasted  
Two Button

Single Breasted  
Four Button

Suit & Vest Styles



Double Breasted  
Four Button

Single Breasted  
Hidden Snaps  
Detachable Belt

Belted  
Single Breasted  
Four Button

### Suit Collar Options & Trim



Flat Collar + Lapel Trim



Rolled Collar + Lapel Trim



Collar & Lapel Contrasting Silk



Collar Only Contrasting Fabric



Flat Collar + Lapel Trim



Rolled Collar + Lapel Trim



Collar & Lapel Contrasting Fabric



Collar & Lapel Two Contrasting Fabrics

### Suit Pocket Options



Pocket Edge Trim  
Rolled



Pocket Edge Trim  
Flat



Two-Tone Flap



None



Pocket Flap &  
Pocket Top Trim



Besom  
(No Pocket Flap)

### Suit Pocket Options

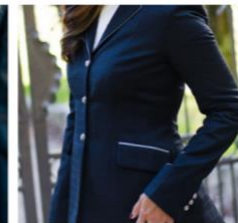
### Buttons



Cloth Covered Buttons



Bronze Metal Button



Silver Metal Buttons



Suede Buttons



Velvet Buttons



Contrasting Fabric  
Buttons





# Western Shirts



From Ranch to Trail to Western Riding, we can help you create the perfect show shirt.



Offering  
Ready-Made  
Semi Custom  
Full Custom



## Choose your Shirting Fabric

We have thousands of options available in Cotton, Cotton Stretch, Satin or our popular Performance Stretch fabrics.



Double Collar  
Choose Your Top & Bottom Collar  
Fabrics



Single Collar  
Choose Your Collar & Trim  
Fabrics

## Placket Options



Placket Trim



Contrasting Placket + Trim





Shirt Front Options



Plain Front  
Placket Trim



Princess Seams  
Placket Trim

Western Front Yoke



Western Yoke Trim  
Placket Trim



Contrasting Western Yoke + Trim  
Placket Trim

Plain Shirt Front



Plain Front  
Placket Trim

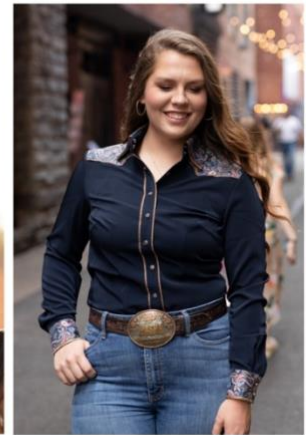


Plain Front  
Placket Trim

Front Western Yoke



Western Front Yoke Trim  
Placket Trim



Contrasting Western Front Yoke  
Placket Trim

Back Options



Back Princess Seams



Contrasting Back Panel

Western Back Yoke



Western Back Yoke Trim



Contrasting Western Back Yoke



Turned Diagonal Stripes



Turned Western Yoke



Western Back Yoke



Western Back Yoke Trim



Contrasting Western Back Yoke + Yoke Trim



Contrasting Front Panel



Contrasting Sleeves



Western Back Yoke



Contrasting Western Back Yoke No Yoke Trim



Contrasting Back Panel

Specialty Designs



Vertical Shoulder & Sleeve Accents



Ornate Western Front Vertical Sleeve Accents

Shirt Cuff Options



Edge Cuff Trim



Contrasting Cuff + Trim



Middle Cuff Trim



Contrasting Cuff + Trim

# Ranch Vests



Button Up Ranch Vest  
+ Matching Western  
Shirt



5 Snap Vest  
Contrasting Pockets  
Western Yoke Trim



4 Snap Vest  
Contrasting Pockets  
Contrasting Western Yoke

## Custom Collars All Day Suit

Use your hunt coat as your showmanship  
jacket by adding matching pants



Design a matching western and hunt shirt to  
finish off your look



### Hunt Coat, Vest & Jacket Chart

Use This Measurement chart to find your perfect size. If you are looking for an extremely tight fit or the fabric is stretchy, you can consider sizing down. If you are unsure or in between sizes, it is usually best to size up and have the garment tailored to you.

	YM	YL	0 XXS	2 XS	4 S	6 M	8 M	10 L	12 L	14 XL	16 XL
Chest	26-27	28-29	30-31	32-33	34-35	35-36.5	36.5-38	38-39	40-41	41-42.5	43-44
Waist	25-26	26-27	26.5-28	28-29	30-31	31-32	32-33	34-35	36-37	38-39	40-41
Hip	29-31	30-32	33-35	36-37	37-38	38-39	39-40	40-41	41-42	43-44	44-46
Front Jacket Length	22.5	23.5	24.5	25	25.5	26.5	26.5	27.5	27.5	28	29
Shoulder	13.5	14.25	15	15.5	15.75	16	16	16.5	17	17.5	17.75
Sleeve Length	22.5	23.5	24.5	24.5	25	25.5	25.5	26	26	26.5	26.5

### Hunt & Western Shirt Chart

Chest: Measure Under your arms around the fullest part of your chest

Waist: Measure around at the smallest part of your natural waist

Shirt Size	Chest	Waist	Shoulder	Sleeve Length	Shirt Length	HUNT SHIRTS Detachable Collar Height
Size 26 YM	26-27"	24-25"	13.5"	22"	23"	1.5"
Size 28 YL	28-29"	24-25"	14"	23"	24"	1.75"
Size 30 XXS	30-31"	26-27"	14.5"	23"	25"	2"
Size 32 XS	32-33"	28-29"	15"	23"	25"	2"
Size 34 S	34-35"	30-31"	15.5"	24"	26"	2"
Size 36 M	36-37"	32-33"	16"	24"	26"	2"
Size 38 M	38-39"	34-35"	16"	25"	26"	2"
Size 40 L	40-41"	36-37"	16.5"	25"	26"	2"
Size 42 L	42-43"	38-39"	17"	25.5"	27"	2"
Size 44 XL	44-45"	40-41"	17"	25.5"	27"	2"
Size 46 XXL	46-47"	42-43"	17"	25.5"	27"	2"