

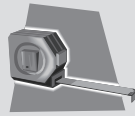
How to install your Roman Blind

#65101-50726-D

VENETA

Required Tools

measuring
tape



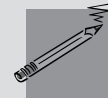
drill with
2mm bit



Phillips bit or
screwdriver



pencil



knife



Included Hardware

The hardware can be found in the end of every box.



Installation
Bracket



Child Safety
Guide
(attached to chain)



Long & Medium
Screws for Wood



Wall Plugs for Brick
or Cement using
a 6mm bit
(if requested)

WARNING
ALL WINDOW COVERINGS
WITH CORD OR CHAIN

To avoid creating a possible strangulation hazard for children, the corded or chained internal window covering must be installed in such a way that a loose cord or chain cannot form a loop 220 mm or longer at a height of less than 1600 mm above floor level.

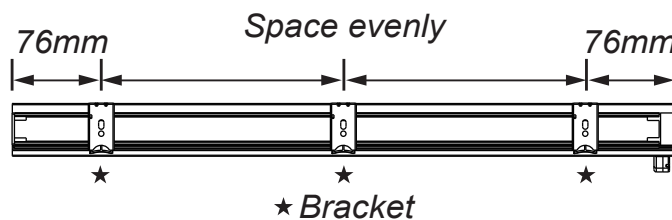
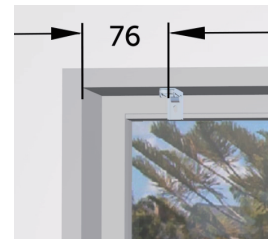
- A cord/chain guide may be installed lower than 1600mm above floor level if the cord/chain is sufficiently secured or tensioned to prevent a loop 220 mm or longer from being formed.
- If a cord/chain guide is installed lower than 1600 mm above floor level, it must be designed to prevent a child from being able to remove the cord/chain.
- If a cleat is used to secure the cord, it must be at least 1600 mm above floor level because a child is capable of unwinding a cord from a cleat.

<https://venetablinds.com.au/pages/child-safety>

1 Installation Brackets

Installing inside the window frame...

- At top of window frame, measure 76mm in from each end and 20mm back from the front of the window frame and mark with a pencil; this is the position of the front screw for the outer brackets.
- Place brackets in position and mark where the back screws will go.
- We recommend drilling pilot holes for the screws using a 2mm bit.
- Fix the brackets into position using 2 long screws for each bracket.
- If more brackets are supplied, space them evenly between the first two brackets.



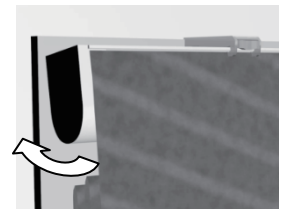
Installing outside the window frame...

- Measure 76mm in from the top left and top right of where the blind will be positioned and mark the centre of where the brackets will go.
- Place brackets in position and mark where the screws will go.
- We recommend using a spirit level if there is no architrave.
- We recommend drilling pilot holes for the screws using a 2mm bit.
- Fix the brackets into position using 1 long screw for each bracket.
- If more brackets are supplied, space them evenly between the first two brackets.



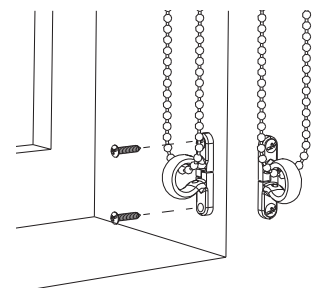
2 Install Blind

- Position the top front of the blind into the top front lip of the brackets.
- Push the blind up at the back to click into position as per diagram to the right.



3 Child Safety Guide

- Position the Child Safety Guide on the wall where the chain is at a slight tension but still ensuring smooth operation and mark where the screws will go.
- We recommend drilling pilot holes for the screws using a 2mm bit.
- Fix the Child Safety Guide into position using 2 medium screws.



Great Job... Enjoy your new Veneta Blinds!

Operating your Blind

- To operate your new Roman blind, simply pull the chain down at the front to raise the blind or pull the chain down at the back to lower the blind.

Maintaining your Blind

1 Dusting

- Dust can be removed using a feather duster or vacuum with brush attachment on low suction.

2 Spot Cleaning

- Use a warm damp cloth or a mild detergent if required for tougher stains.
- Dab the affected area, but do not rub the fabric. Finish with just a warm damp cloth.
- Allow the fabric to dry in the lowered position.

3 Washing

- Firstly lower the blind and remove the bottom bar and battens from the back of the blind. You will notice small slots in the fabric where the bar and battens can be removed.
- Untie the cord from the stoppers at the bottom back of the blind and slide the cord out from the O-rings.
- Remove the fabric from the headrail which is attached by a Velcro strip.
- Clean the blind by following the care label, sewn at the right bottom of the blind.
- Re-assemble the blind doing these steps in reverse.
- Fabric Care Symbols:



Machine Wash Cold



Machine Washed Warm



Hand Wash Cold



Bleach Is Allowed



Tumble Dry Medium



Line Dry



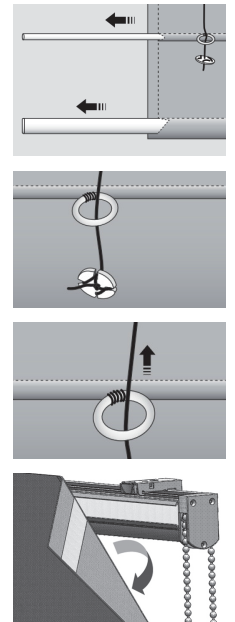
Warm Iron If Needed



Only Non-Chlorine Bleach When Needed



Can Be Dry Clean



Feedback?

We would love to know how you went with your installation...

Please write a review on our website at...

www.venetablinds.com.au

Troubleshooting

Problem	Solution
The blind slants to the side.	Make sure the mounting brackets are level and aligned.
The blind does not raise and lower evenly.	Make sure the cord length on each side of the blind is level and aligned.
The length of the blind is too long or short.	The length can be adjusted by re-sticking the Velcro.
Gap between the blind and top window frame	Slightly move up the velcro and re-stick at desired position to minimize the gap.

Need HELP?

Customer Service

1800 836 382

"the best compliment
you can give
is a referral"