

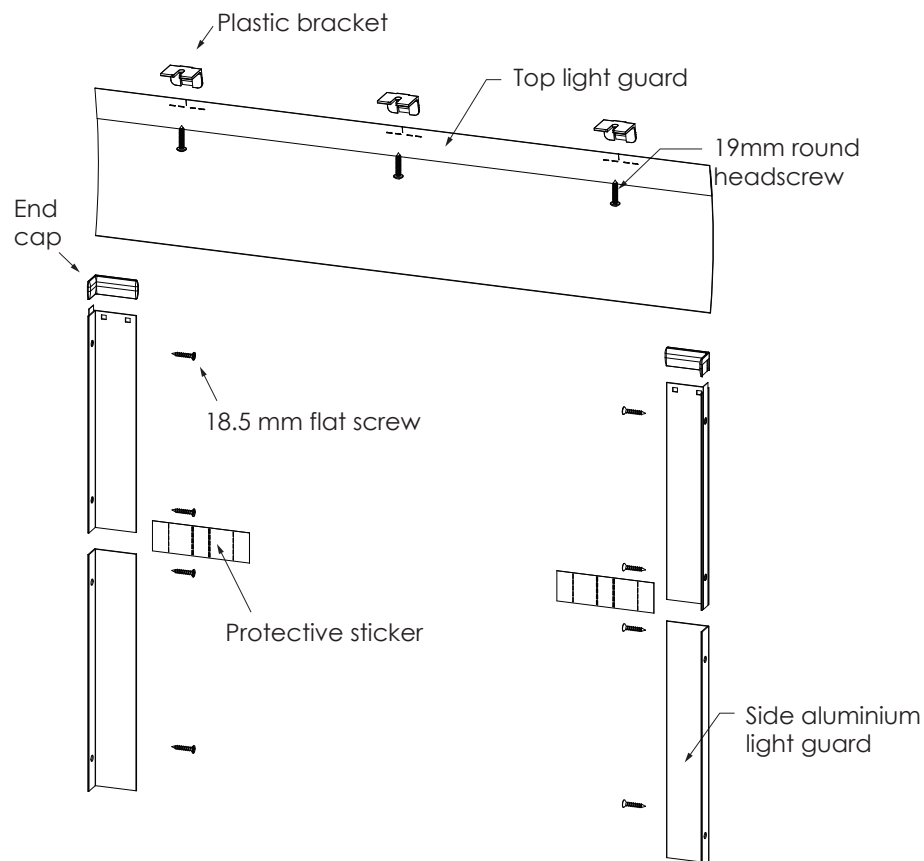
Install Light Guard (Optional for IM)

Hardware included

Hardware	Drawing	Usage
19mm round headscrew		To install plastic bracket
Plastic bracket		To install top light guard (mounted for regular roller blind)
Top light guard holder		To install top light guard (mounted on raceway)
Protective sticker		To join the spliced aluminium light guard
Aluminium light guard end cap		Pre-installed on the top of the aluminium light guard
18.5 mm flat screw		To install side light guard

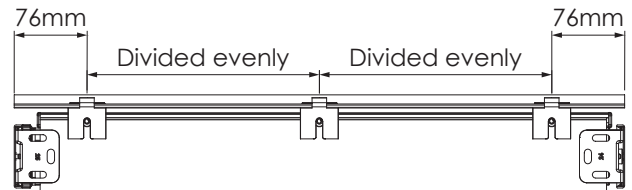
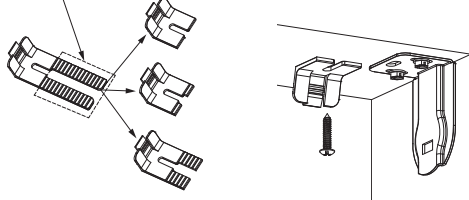
Installation of top light guard (regular blind)

Top light guard should be install before blind bracket.



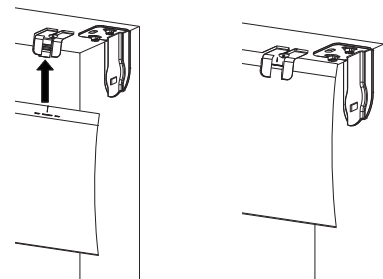
Install plastic bracket

This part can be broken off if needed.

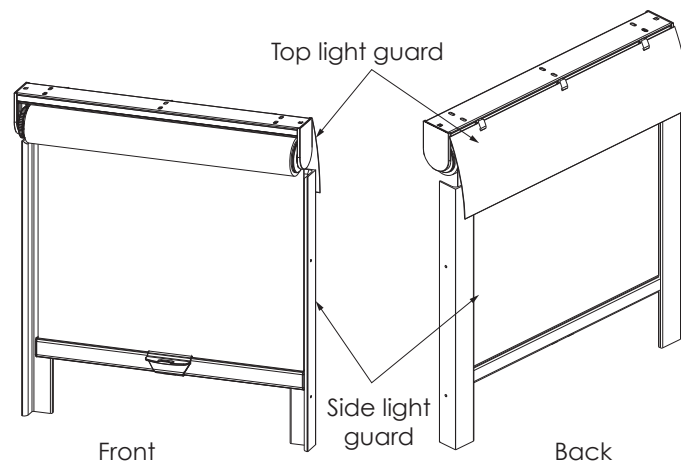


Install top light guard

Insert light guard to the back of plastic bracket and make sure the top of light guard meet the top of window firmly.

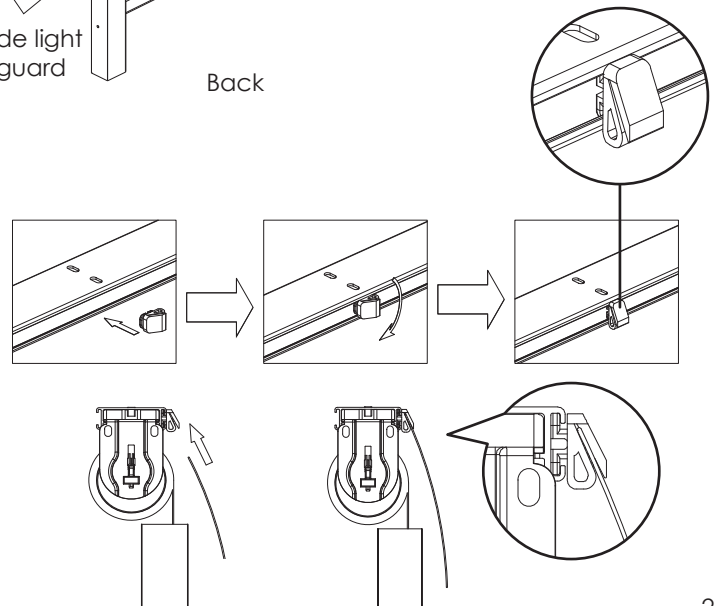


Installation of top light guard (raceway system)



Install top light guard

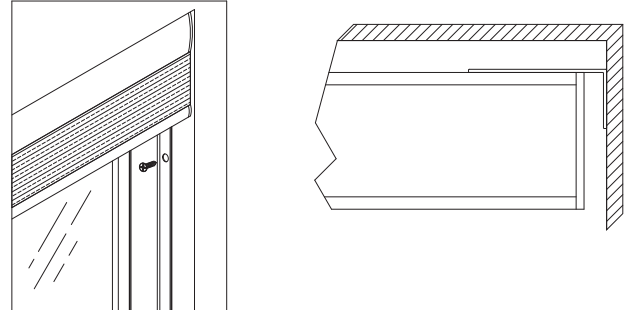
Insert the top light guard holder horizontally into the groove at the backside of raceway and turn 90 degrees to lock in the raceway groove. Then insert the top light guard into the groove of the top light guard holder.



Installation of Side Aluminium Light Guard

Fully lower the blind down and make the wide side of light guard be next to the back of blind fabric.

For better light blocking, the top of light guard should be placed next to the blind fabric and the bottom of light block is recommend to be installed sloping to the front.



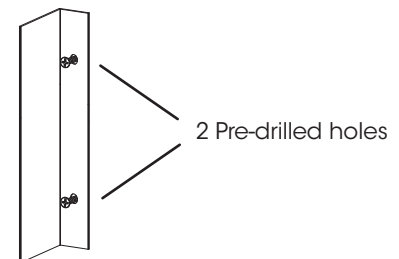
With light guard at back

End cap will be pre-installed on the top of the aluminium light guard. When installing the light guard, the end cap side should always be on top.

Remove the double sided tapes on the narrow side of the light guard and carefully paste the light guard to the window frame in position.

a. For better fixing the aluminium light guard to the window, use 18.5mm flat head screw to secure the light guard through the pre-drilled hole.

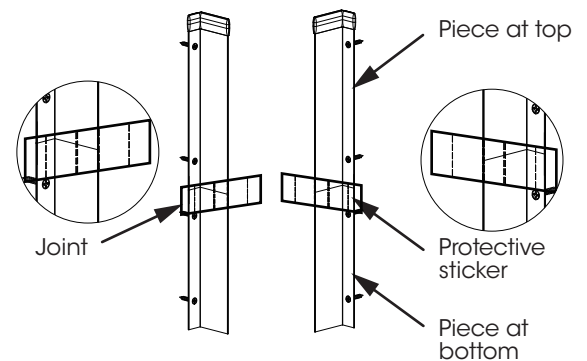
There will be 2 Pre-drilled holes on each piece of light guard.



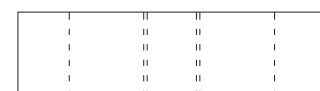
b. Aluminium light guard will be spliced in middle when blind length is equal to or greater than 1200mm.

When light guard sliced into 2pcs, firstly paste one piece of light guard with no end cap vertically towards the bottom window frame, and paste the other piece of light guard with end cap, and make sure the end cap is on top above the first one, the edges must be carefully aligned.

c. To avoid the edges from scraping the fabric, use the protective sticker to completely cover the joint of the two pieces of light guard on both front and back sides of light guard as diagram on the right.



Align the double dotted line with the edge of the light guard, and fold the transparent adhesive tape on both sides, as shown in the figure right.



Protective sticker