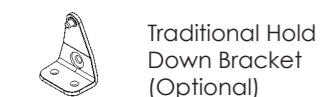
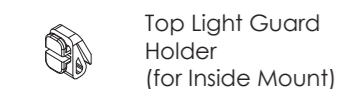
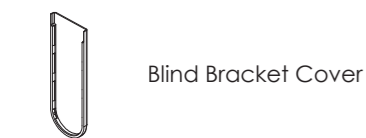
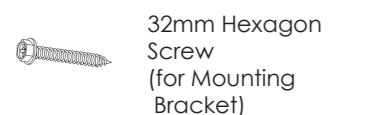


Required Tools



Included Hardware

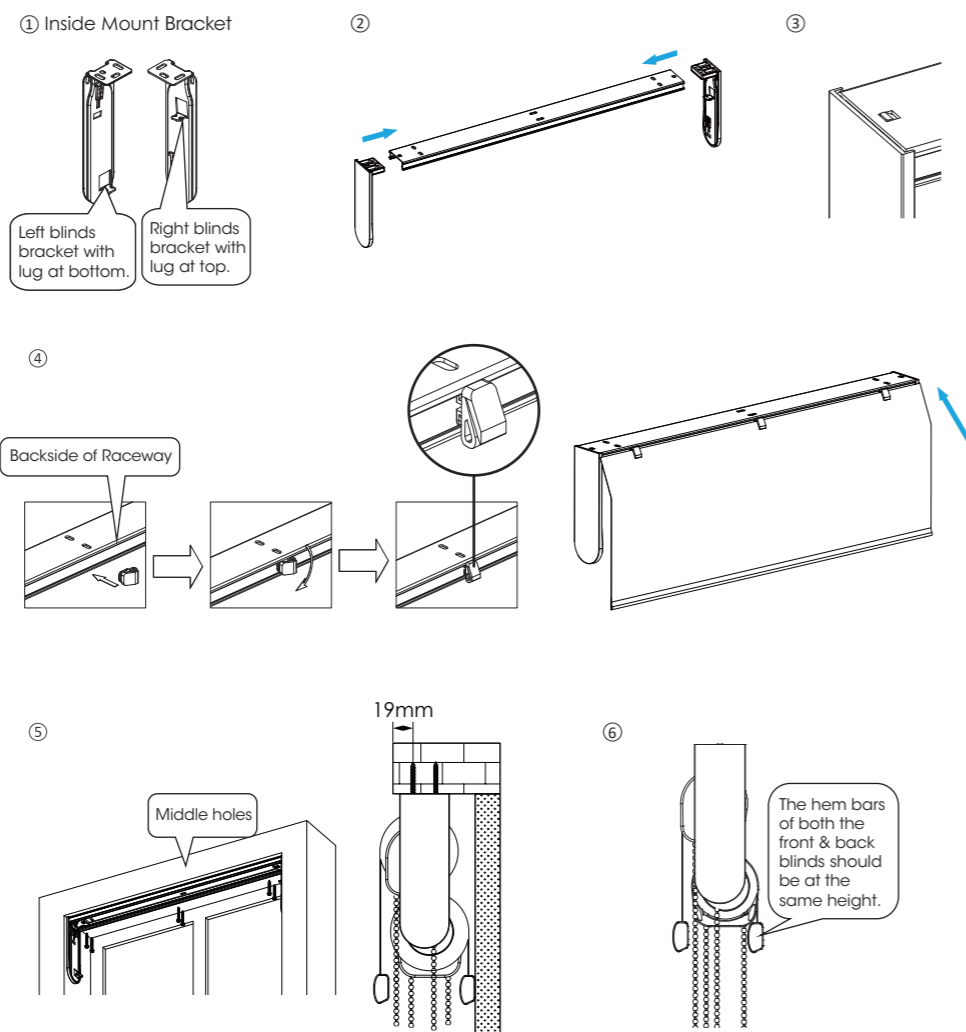
The hardware can be found in the small hardware box included with your blind.



Installing inside the window frame

1 Blind Bracket Installation

- See instructions below to locate the correct brackets first. Left blinds bracket with lug at bottom. Right blinds bracket with lug at top.
- Attach the Blind brackets and extensions into the two ends of the raceway.
- Make sure the extension bolt locks into the raceway's dedicated hole.
- Insert the top light guard holder horizontally into the groove at the backside of raceway and turn 90 degrees to lock in the raceway groove. Then insert the top light guard into the groove of the top light guard holder.
- First fit the blind bracket cover over the blind bracket. Install the raceway into the window opening. We recommend securing the screws into the middle holes of the raceway first. This would allow you to adjust the raceway left or right if required. Once the correct position has been located, secure the screws for the holes. Take care that the distance between the 1st screw and the window edge is at least 19mm.
- The hem bars of both the front & back blinds should be at the same height.



Installation continued...

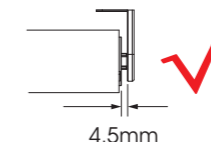
2 Blind Installation and Removal

Installation of the Blind...

Always start with the back blind before installing the front blind.

- The clutch end will be at the left side of back blind. First, insert the clutch of back blind into the lug at bottom of left bracket.

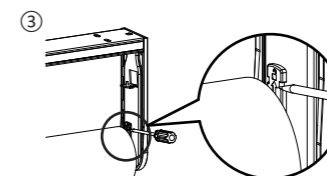
- Second, press the end plug and insert the end plug end into the hole of bracket of the other side.



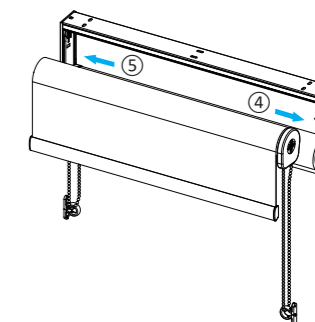
The gap on end plug end needs to be about 4.5mm.

- Finally slide the lock pin in the blind bracket downward into the end plug to prevent the blind from falling.

- The clutch end will be at the right side of front blind. Repeat the above steps for front blinds.



The lock pin in the blind bracket must be slide downward into the end plug to prevent the blind from falling.



WARNING

ALL WINDOW COVERINGS WITH CORD OR CHAIN

To avoid creating a possible strangulation hazard for children, the corded or chained internal window covering must be installed in such a way that a loose cord or chain cannot form a loop 220 mm or longer at a height of less than 1600 mm above floor level.

- A cord/chain guide may be installed lower than 1600mm above floor level if the cord/chain is sufficiently secured or tensioned to prevent a loop 220 mm or longer from being formed.
- If a cord/chain guide is installed lower than 1600 mm above floor level, it must be designed to prevent a child from being able to remove the cord/chain.
- If a cleat is used to secure the cord, it must be at least 1600 mm above floor level because a child is capable of unwinding a cord from a cleat.

<https://venetablinds.com.au/pages/child-safety>

Blind Installation Tips...

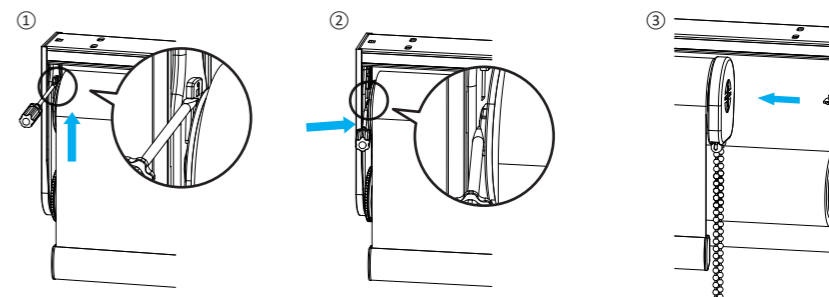
After blind is installed into blind brackets, use a Level to check if the fabrics roll is horizontal; if not, please adjust the position of blind brackets to keep the fabrics roll level.



Removal of the Blind...

Always remove the front blind first.

- Use a tool to push the lock pin on end plug bracket upward.
- Use tool to draw back the end plug from bracket.
- Finally remove blind from mounting bracket.

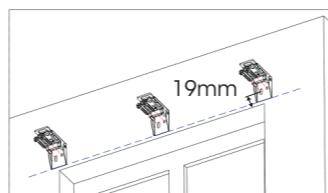


Installation continued...

Installing outside the window frame

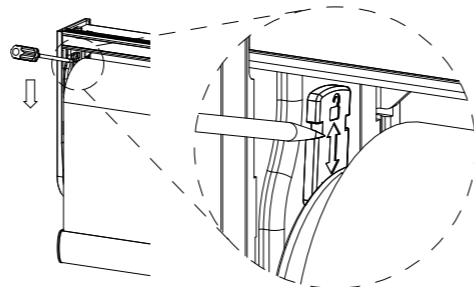
1 Blind Bracket Installation

- ① Measure 75mm in from top left and top right of where the blind will sit, and mark where the screws will go.
- ② When installing the mounting bracket, the distance from the bracket's mounting hole to the edge of the window frame should be at least 19mm.
- ③ Make sure all brackets line up with each other horizontally. Each bracket will require two 32mm hexagon screws for the installation.
- ④ If more brackets are supplied, space them evenly between the first two brackets.

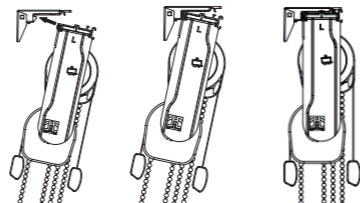


2 Blind Installation and Removal

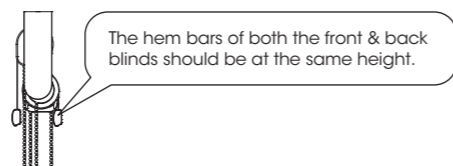
Before installing the shade into the mounting brackets, please locate the lock pin in the shade bracket on the end plug side. Slide the pin downward into the end plug to prevent the shade from falling.



Insert the back edge of the raceway into the back plastic part of the bracket, and then turn the raceway upwards so that the front rib of the raceway snaps into the bracket.

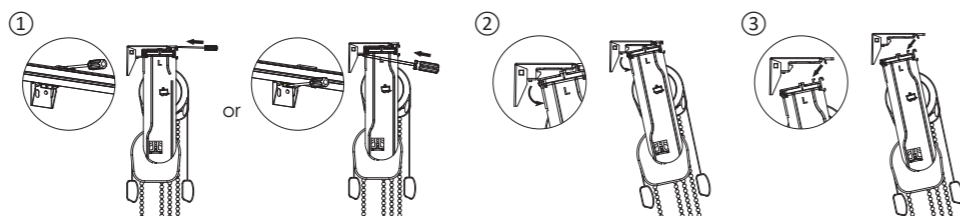


- The hem bars of both the front & back blinds should be at the same height.



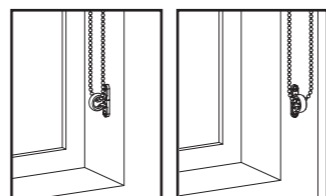
Removal of the Blind...

- ① Use a tool to push back the front or back plastic part of the brackets.
- ② Turn the back side of the raceway downward so that it detaches from the bracket.
- ③ Finally remove the raceway by pulling downward from the brackets.



3 Install Safety Tension Device

- Use two 19mm round head screws to install the safety device.
- The chain should be fully extended upon installation of the device.



Feedback?

We would love to know how you went with your installation...

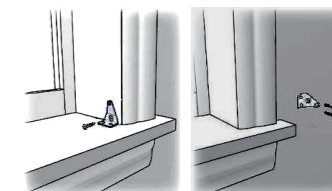
Please write a review on our website at...

www.venetablinds.com.au

Installation continued...

4 Hold Down Brackets Installation (optional)

- Use 19mm round head screw to secure each bracket.

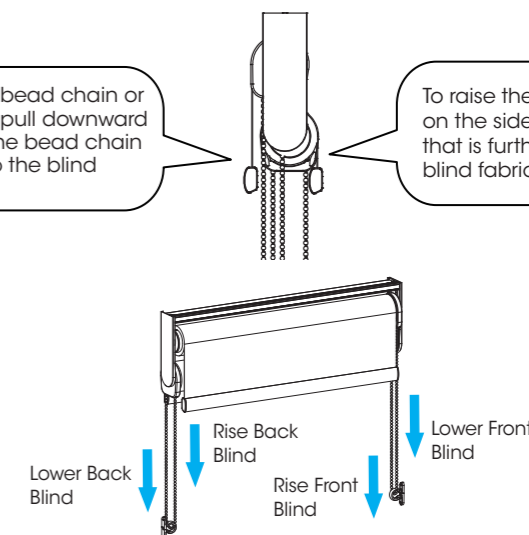


5 Blinds Operation

Cordloop...

To "release" the bead chain or lower the blind, pull downward on the side of the bead chain that is closest to the blind fabric.

To raise the blind, pull downward on the side of the bead chain that is furthest away from the blind fabric.



SmartRelease™...

- For the operation of SmartRelease™, gently pull the bead chain which is closer to the blind fabric downwards about 40mm and the blind will lower automatically. If there is a need to stop the blind while it is lowering, pull the bead chain which is farther away from the blind fabric and the blind will stop. If the blind cannot lower automatically after gently pulling the bead chain which is closer to the fabric, pull the bead chain which is further away from the fabric first, and then pull the bead chain on the other side.

Great Job... Enjoy your new Veneta Blinds!

Maintaining your Blind

1 Dusting

- Dust can be removed using a feather duster or vacuum with brush attachment on low suction.

2 Spot Cleaning

- Use a warm damp cloth or a mild detergent for tougher stains.
- Dab the affected area, but do not rub the fabric. Finish with just a warm damp cloth.
- Allow the fabric to dry in the lowered position.

Need HELP?

Call our Customer Service team for assistance

1800 836 382