

How to install your Cordless (Roller Blinds with No top treatment)

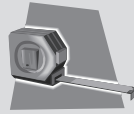
#65101-40159-D



Difficulty: ★☆☆☆☆

Required Tools

measuring tape



drill with 2mm bit



phillips bit or screwdriver



pencil



knife



Included Hardware

The hardware can be found in the small hardware box included with your blind.



32mm Hexagon Screw (for Blind Bracket)



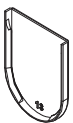
19mm Round Head Screw



Blind Bracket (on Tension Dial)



Blind Bracket (on End Plug end)



Blind Bracket Cover



Installation Template



Traditional Hold Down Bracket (Optional)

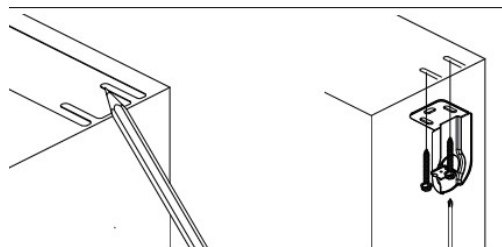


Handle

1 Blind Bracket Installation

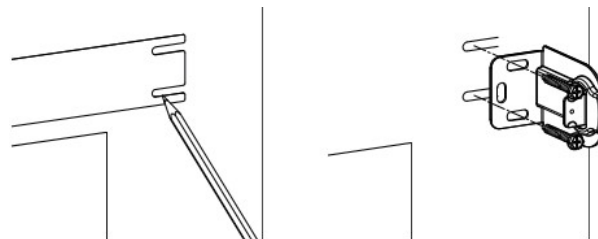
Installing inside the window frame...

- ① Uncover tape from installation template.
- ② Attach installation template into suitable position, mark mounting hole position by pencil.
- ③ Ensure both of the brackets are at the same horizontal line.
- ④ Each bracket needs two 32mm Hexagon screws for installing.



Installing outside the window frame...

- ① Uncover tape from installation template.
- ② Attach installation template into suitable position, mark mounting hole position by pencil.
- ③ Ensure both of the brackets are at the same horizontal line.
- ④ Each bracket needs two 32mm Hexagon screws for installing.

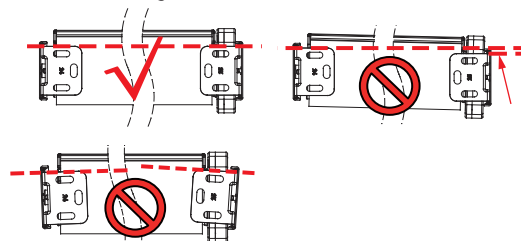


Blind Brackets Installation Tips...

- ① The top & bottom of left & right blind brackets should be at the same horizontal line.



- ② The front & back of left & right blind brackets should be at the same horizontal line.



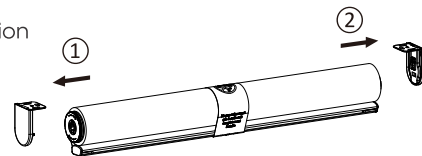
Installation
continued...

2

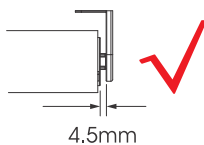
Blind Installation and Removal

Installation of the Blind...

- ① First, insert the tension dial into the tongue of tension dial bracket.

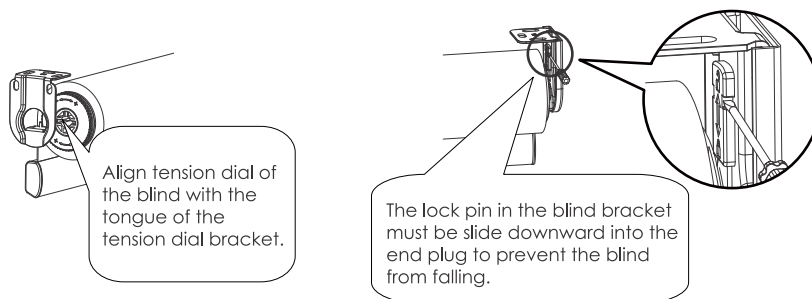


- ② Second, press the end plug and insert the end plug end into the hole of bracket of the other side.



The gap on end plug end needs to be about 4.5mm.

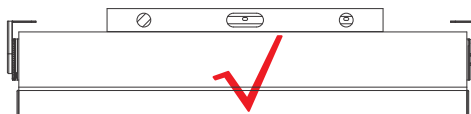
- ③ Slide the lock pin in the blind bracket downward into end plug to prevent the blind from falling.



- ④ Finally remove the paper band from the shade.

Blind Installation Tips...

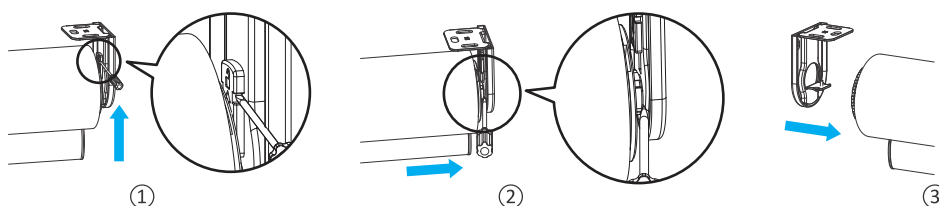
After blind is installed into blind brackets, use a level to check if the fabrics roll is horizontal; if not, please adjust the position of blind brackets to keep the fabrics roll level.



The blind needs to be level.

Removal of the Blind...

- ① Use a tool to push the lock pin on end plug bracket upward.
- ② Use tool to draw back the end plug from bracket.
- ③ Finally remove blind from mounting bracket.



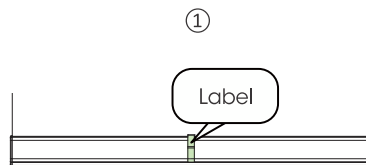
Installation
continued...

3

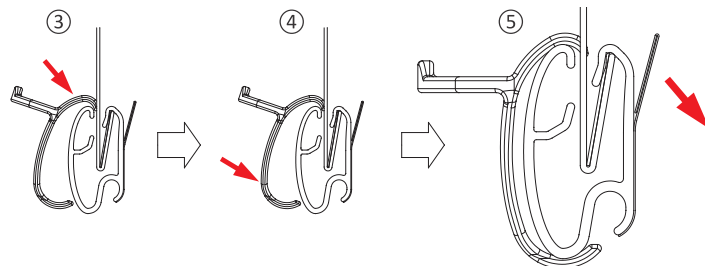
Handle installation and Removal

Attach Handle to Hem Bar...

- Step 1:** Turn over hem bar and you can see a label attached at the center of the hem bar.
- Step 2:** Align the center of the bottom of the handle with the label.
- Step 3:** Hook the handle to the hem bar from top to bottom.
- Step 4:** Press the handle from top to bottom to make the top of the handle clip into the hem bar.
- Step 5:** Tear off the label from hem bar.

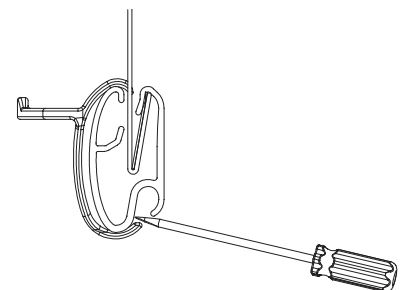


The center of handle should be aligned with the label.



Remove handle from hem bar...

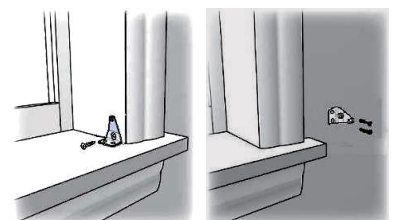
Use straight screwdriver to pry the bottom of handle from hem bar and then the handle can be removed.



4

Hold Down Brackets Installation (optional)

- Use 19mm round head screw to secure each bracket.



Cordless (Roller Blinds with No top treatment)

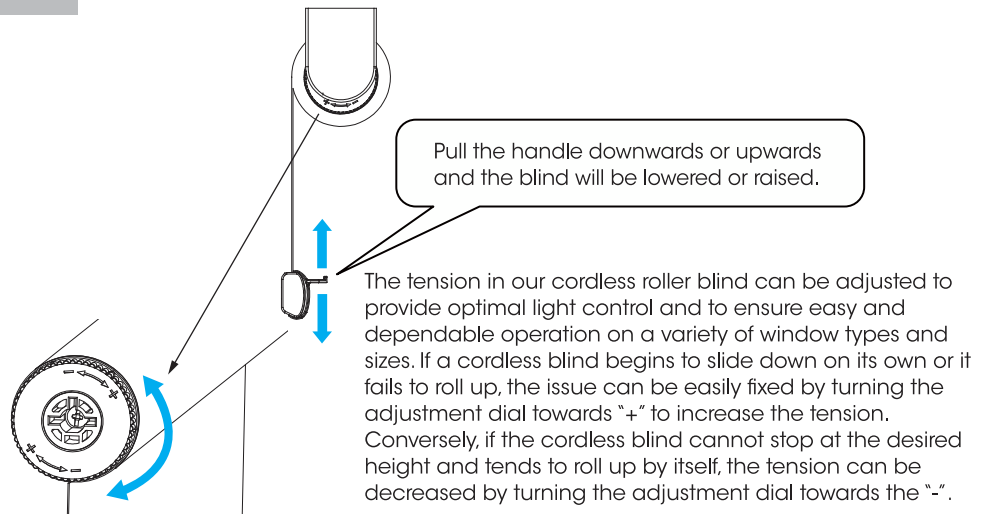
#65101-40159-D

Difficulty: ★☆☆☆☆

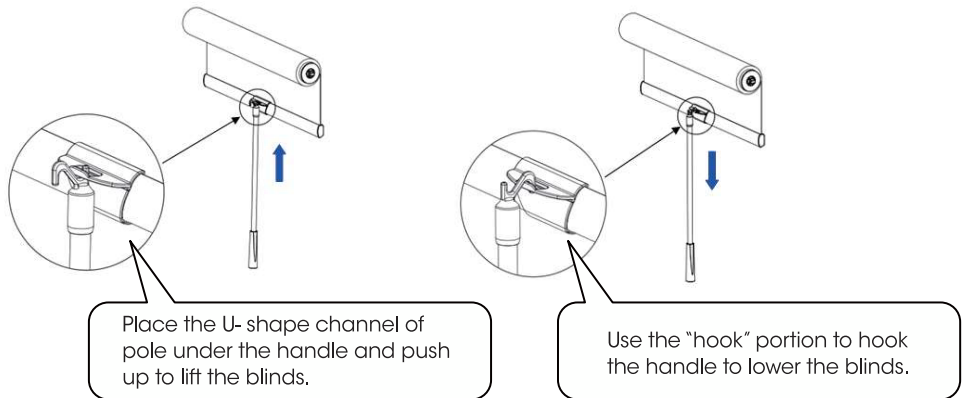
Installation continued...

5

Cordless Operation



*** The blind must be installed on the brackets when adjusting.**



Great Job... Enjoy your new Veneta Blinds!

Maintaining your Blind

1

Dusting

- Dust can be removed using a feather duster or vacuum with brush attachment on low suction.

Feedback?

We would love to know how you went with your installation...

Please write a review on our website at...

www.venetablinds.com.au

2

Spot Cleaning

- Use a warm damp cloth or a mild detergent for tougher stains.
- Dab the affected area, but do not rub the fabric. Finish with just a warm damp cloth.
- Allow the fabric to dry in the lowered position.

Need HELP?

Call our
Customer Service team
for assistance

1800 836 382