

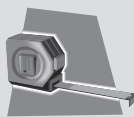
Cordloop (Roller Blinds with No top treatment)

#65101-40156-C

Difficulty: ★☆☆☆☆

Required Tools

measuring
tape



drill with
2mm bit



phillips bit or
screwdriver



pencil



knife



Included Hardware

The hardware can be found in the small hardware box included with your blind.



32mm Hexagon
Screw
(for Blind Bracket)



19mm Round Head
Screw



Blind Bracket
(on Clutch end
for Inside Mount)



Blind Bracket
(on End Plug end
for Inside Mount)



Blind Bracket
Cover



Installation Template

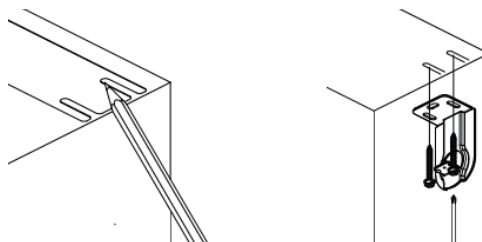


Traditional Hold
Down Bracket
(Optional)

1 Blind Bracket Installation

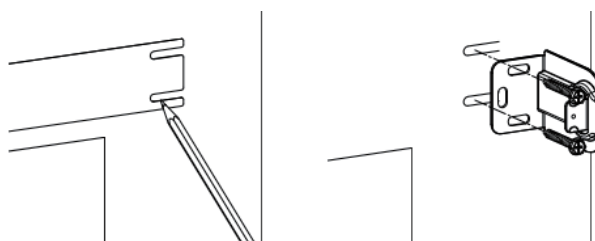
Installing inside the window frame...

- ① Uncover tape from installation template.
- ② Attach installation template into suitable position, mark mounting hole position by pencil.
- ③ Ensure both of the brackets are at the same horizontal line.
- ④ Each bracket needs two 32mm Hexagon screws for installing.



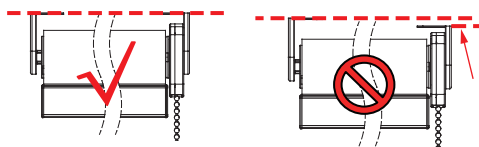
Installing outside the window frame...

- ① Uncover tape from installation template.
- ② Attach installation template into suitable position, mark mounting hole position by pencil.
- ③ Ensure both of the brackets are at the same horizontal line.
- ④ Each bracket needs two 32mm Hexagon screws for installing.

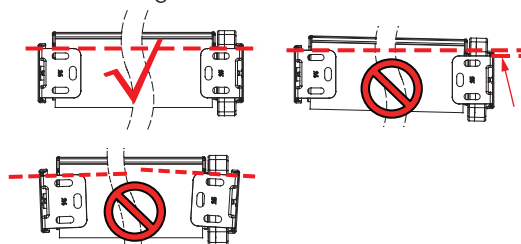


Blind Brackets Installation Tips...

- ① The top & bottom of left & right blind brackets should be at the same horizontal line.



- ② The front & back of left & right blind brackets should be at the same horizontal line.



How to install your
Cordloop
 (Roller Blinds with No top treatment)

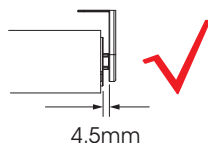
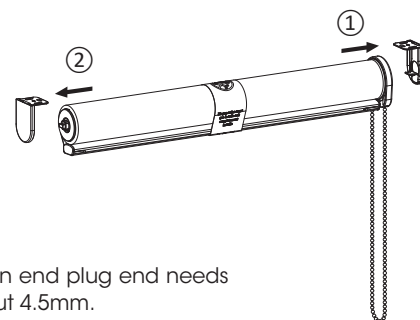
#65101-40156-C

Installation
 continued...

2 Blind Installation and Removal

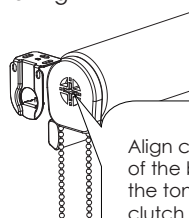
Installation of the Blind...

- ① First, insert the clutch end into the tongue of clutch bracket.
- ② Second, press the end plug and insert the end plug end into the hole of bracket of the other side.

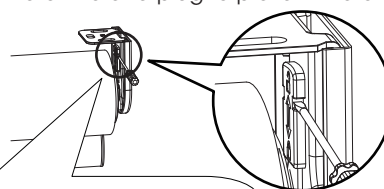


The gap on end plug end needs to be about 4.5mm.

- ③ Slide the lock pin in the blind bracket downward into end plug to prevent the blind from falling.



Align clutch end of the blind with the tongue of the clutch bracket.

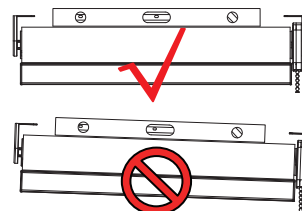


The lock pin in the blind bracket must be slide downward into the end plug to prevent the blind from falling.

- ④ Finally remove the paper band from the shade.

Blind Installation Tips...

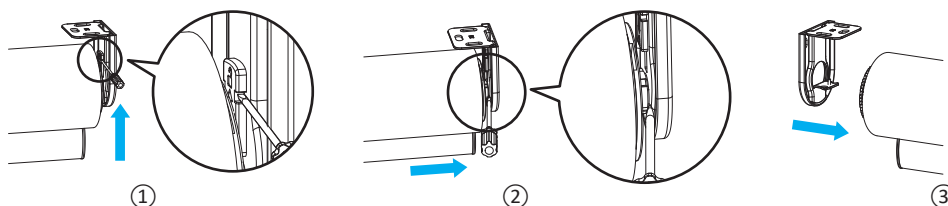
After blind is installed into blind brackets, use a level to check if the fabrics roll is horizontal; if not, please adjust the position of blind brackets to keep the fabrics roll level.



The blind needs to be level.

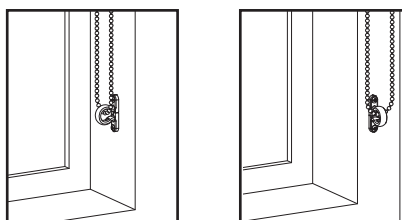
Removal of the Blind...

- ① Use a tool to push the lock pin on end plug bracket upward.
- ② Use tool to draw back the end plug from bracket.
- ③ Finally remove blind from mounting bracket.



3 Install Safety Tension Device

- Use two 19mm round head screws to install the safety device.
- The chain should be fully extended upon installation of the device.



! WARNING
ALL WINDOW COVERINGS WITH CORD OR CHAIN

To avoid creating a possible strangulation hazard for children, the corded or chained internal window covering must be installed in such a way that a loose cord or chain cannot form a loop 220 mm or longer at a height of less than 1600 mm above floor level.

- A cord/chain guide may be installed lower than 1600mm above floor level if the cord/chain is sufficiently secured or tensioned to prevent a loop 220 mm or longer from being formed.
- If a cord/chain guide is installed lower than 1600 mm above floor level, it must be designed to prevent a child from being able to remove the cord/chain.
- If a cleat is used to secure the cord, it must be at least 1600 mm above floor level because a child is capable of unwinding a cord from a cleat.

<https://venetablinds.com.au/pages/child-safety>

Cordloop (Roller Blinds with No top treatment)

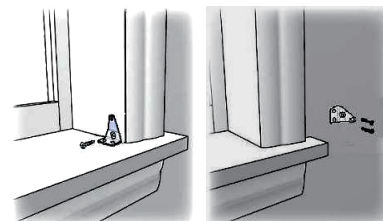
Difficulty: ★☆☆☆☆

#65101-40156-C

Installation continued...

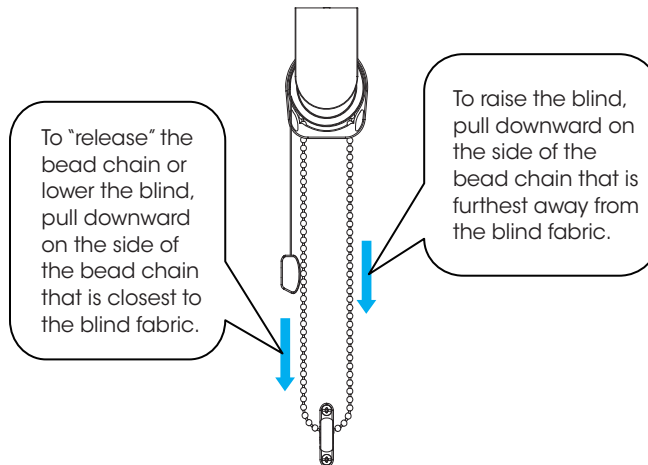
4 Hold Down Brackets Installation (optional)

- Use 19mm round head screw to secure each bracket.



5 Blinds Operation

Cordloop...



Great Job... Enjoy your new Veneta Blinds!

Maintaining your Blind

1 Dusting

- Dust can be removed using a feather duster or vacuum with brush attachment on low suction.

Feedback?

We would love to know how you went with your installation...

Please write a review on our website at...

www.venetablinds.com.au

2 Spot Cleaning

- Use a warm damp cloth or a mild detergent for tougher stains.
- Dab the affected area, but do not rub the fabric. Finish with just a warm damp cloth.
- Allow the fabric to dry in the lowered position.

Need HELP?

Call our Customer Service team for assistance

1800 836 382