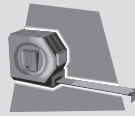


Required Tools

measuring
tape



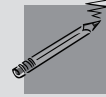
drill with
2mm bit



phillips bit or
screwdriver



pencil

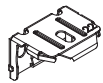


knife

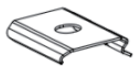


Included Hardware

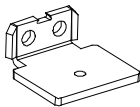
The hardware can be found in the end of every box.



Installation Bracket
(Top Rail)



Installation Bracket
(Bottom Rail)



L Bracket
(Bottom Rail)
(Outside Mount
Only)



L Bracket Cover



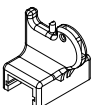
Long Screws
for Wood



Bolt



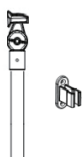
Handle



Regulator



Wall Plugs for Brick
or Cement using
a 6mm bit
(if requested)

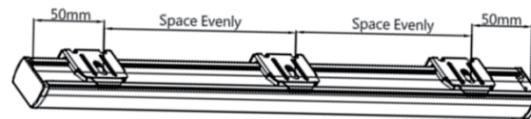


Extension Pole
(if requested)

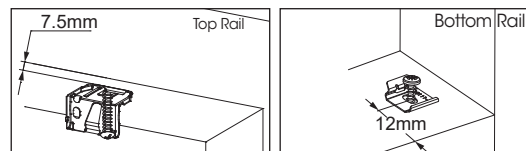
1 Installing INSIDE the window frame

Top and Bottom Rail Brackets:

- At top of window opening, measure 50mm in from each end 7.5mm back from the front of the window opening and mark with a pencil; this is the position of the screw for the outer brackets.

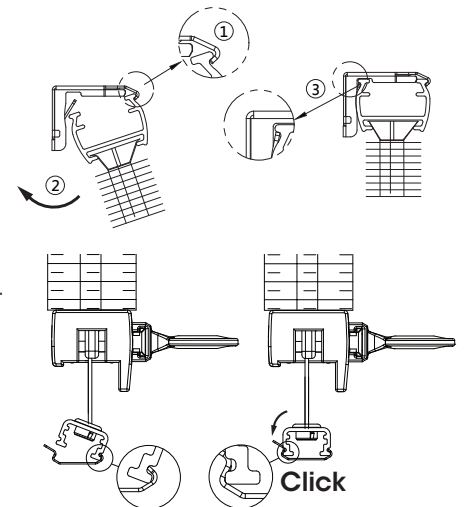


- At bottom of window opening, measure 25mm in from each side and 12mm back from the front of the window opening and mark with a pencil; this is the position of the screw for the outer brackets.
- We recommend drilling pilot holes for the screws using a 2mm bit.
- Fix the brackets into position using the long screws provided.
- If more brackets are supplied, space them evenly between the first two brackets.



Install Blind:

- Place the top front of the blind under the top front lip of the brackets.
- Push the blind up at the back to click into position.
- Extend the blind and place the bottom front of the blind under the front lip of the bottom brackets.
- Push the blind down at the back to click into position.
- Ensure the blind has clicked firmly into place.



2 Installing OUTSIDE the window frame

Top Rail Brackets:

- Place the top of the blind in position, mark the top corners with a pencil.
- Measure 50mm in from each mark; this is the position of the top centre of the brackets.
- Place brackets in position and mark where the screws will go.
- We recommend drilling pilot holes for the screws using a 2mm bit.
- Fix the brackets into position using the long screws provided.
- If more brackets are supplied, space them evenly between the first two brackets.

Install Top Rail:

- Place the top front of the blind under the top front lip of the brackets.
- Push the blind up at the back to click into position.
- Ensure the blind has clicked firmly into place.

Installation continued...

Feedback?

We would love to know how you went with your installation...

Please write a review on our website at...

www.venetablinds.com.au

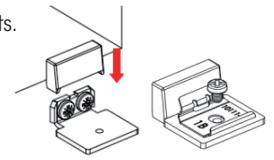
Need HELP?

Call our Customer Service team for assistance

1800 836 382

Bottom Rail Brackets:

- Extend the blind and place the bottom rail in position, mark the bottom corners with a pencil.
- Measure 25mm in from each mark; this is the position of the bottom centre of the L brackets.
- Place brackets in position and mark where the screws will go.
- We recommend drilling pilot holes for the screws using a 2mm bit.
- Fix the brackets into position using screws provided.
- If more brackets are supplied, space them evenly between the first two brackets.
- Attach the bottom rail brackets to the L bracket using one bolt per bracket.
- Slide the L bracket covers over the L brackets.

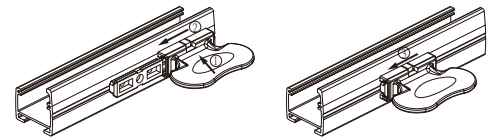


Install Bottom Rail:

- Place the bottom front of the blind under the top front lip of the brackets.
- Push the blind down at the back to click into position.
- Ensure the blind has clicked firmly into place.

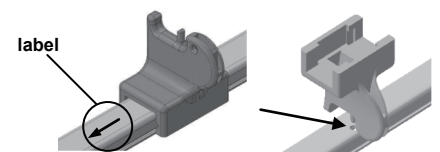
3 Attach Handle

- Attach the handle to the handle support pre-attached on the rail then slide against the handle support to the left until the handle can't move anymore.



4 Adjust Blind Tension

- To Tension the blind – On the bottom rail, slide the Regulator as per diagram.
- To Loosen the blind – Place the Regulator pin into the hole on the bottom rail and press down.



Great Job... Enjoy your new Veneta Blinds!

Operating your Blind

- Lower and raise the blind by using the handle on the middle rail.

Maintaining your Blind

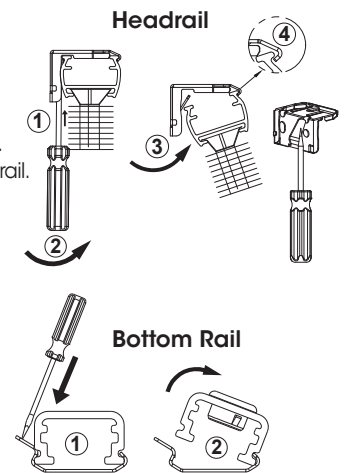
1 Removing your blind

For Headrail:

- Push a flat head screwdriver between the back of the headrail and bracket.
- Tilt screwdriver forward to disengage bracket tab from the back of the headrail.
- Pull back of headrail down to remove headrail from bracket.
- Repeat for all other brackets.

For Bottom Rail:

- Push a flat head screwdriver between the back of the bottom rail and bracket.
- Tilt screwdriver forward to disengage bracket from the back of the bottom rail.
- Pull back of bottom rail up to remove headrail from bracket.
- Repeat for all other brackets.



2 Dusting

- Dust can be removed using a feather duster or vacuum with brush attachment on low suction.

3 Spot Cleaning

- Use a warm damp cloth or a mild detergent for tougher stains.
- Dab the affected area, but do not rub the fabric. Finish with just a warm damp cloth.
- Allow the fabric to dry in the lowered position.

4 Ultrasonic

- If ultrasonically cleaning the blind please specify that a mild solution must be used.
- Note the rails should never be immersed in liquid.