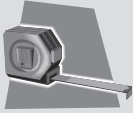






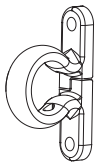
Required Tools	measuring tape	drill with 2mm bit	phillips bit or screwdriver	pencil	knife
					

## Included Hardware

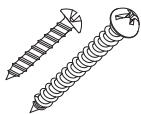
The hardware can be found in the end of every box.



Installation Bracket



Tension Device (Cleat)



Short & Medium Screws for Wood

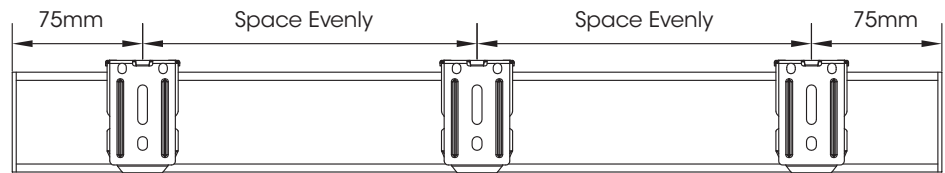
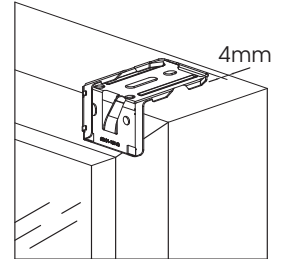


Wall Plugs for Brick or Cement using a 6mm bit (if requested)

## 1 Installation Brackets

### Installing inside the window frame...

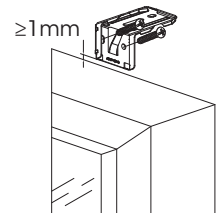
- At top of window frame, measure 75mm in from each side.
- Measure 4mm back from front of window frame and mark the position of the centre front of the window.
- Place brackets in position and mark where the screws will go.
- We recommend drilling pilot holes for the screws using a 2mm bit.
- Fix the brackets into position using the medium screws provided.
- If more brackets are supplied, space them evenly between the first two brackets.



Top View

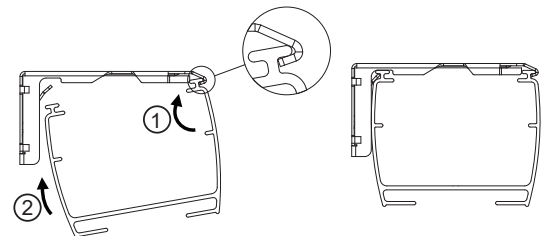
### Installing outside the window frame...

- Measure 75mm in from top left and top right of where the blind will sit (normally edge of architrave) and mark the centre of the brackets.
- Place brackets in position and mark where the screws will go.
- We recommend using a spirit level to align brackets if not installing on the architrave.
- We recommend drilling pilot holes for the screws using a 2mm bit.
- Fix the brackets into position using the medium screws provided.
- If more brackets are supplied, space them evenly between the first two brackets.



## 2 Install Blind

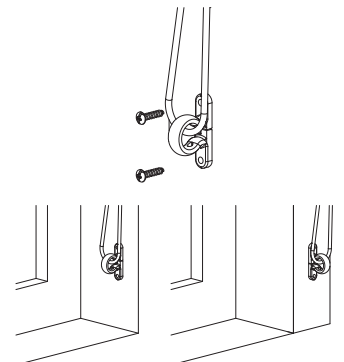
- Position the top front of the blind under the top front lip of the brackets.
- Push the blind up at the back and click into position as per diagram.



Side View

## 3 Install the Tension Device (Cleat)

- Mark the position where the tension device will be installed.
- The tension device shall be installed at the maximum distance possible from the control mechanism to prevent the looped pull cord(s) becoming slack.
- Install the tension device with two short screws which must be secured into a solid surface.
- When positioning and installing the tension device, make sure the cord is taut without stretching, twisting or crossing.



Need HELP?

Call our Customer Service team for assistance

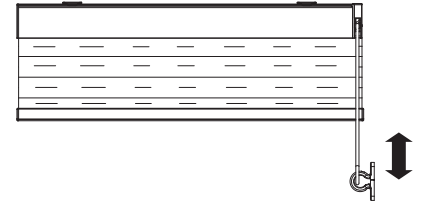
**1800 836 382**

# How to operate and maintain your Cordloop Honeycomb Blind



## Operating your Blind

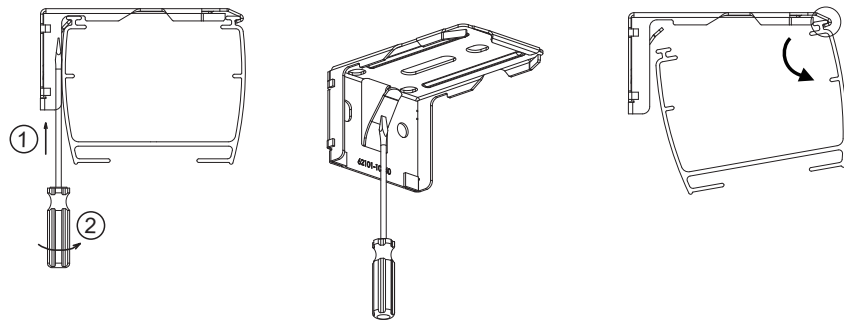
- Pull cord to operate blind.
- Tension device must be fully tightened prior to operating the blind.



## Maintaining your Blind

### 1 Removing your blind

- Position a flat head screw driver between the back of the headrail and center of the bracket, and push up the flip on the bracket.
- While pushing upwards, gently swing the screwdriver forward to pry the bracket off the head rail.
- Repeat for all other brackets.



### 2 Dusting

- Dust can be removed using a feather duster or vacuum with brush attachment on low suction.

### 3 Spot Cleaning

- Use a warm damp cloth or a mild detergent for tougher stains.
- Dab the affected area, but do not rub the fabric. Finish with just a warm damp cloth.
- Allow the fabric to dry in the lowered position.

### 4 Ultrasonic

- If ultrasonically cleaning the blind please specify that a mild solution must be used.
- Note the rails should never be immersed in liquid.

## **!WARNING** ALL WINDOW COVERINGS WITH CORD OR CHAIN

To avoid creating a possible strangulation hazard for children, the corded or chained internal window covering must be installed in such a way that a loose cord or chain cannot form a loop 220 mm or longer at a height of less than 1600 mm above floor level.

- A cord/chain guide may be installed lower than 1600mm above floor level if the cord/chain is sufficiently secured or tensioned to prevent a loop 220 mm or longer from being formed.
- If a cord/chain guide is installed lower than 1600 mm above floor level, it must be designed to prevent a child from being able to remove the cord/chain.
- If a cleat is used to secure the cord, it must be at least 1600 mm above floor level because a child is capable of unwinding a cord from a cleat.

<https://venetablinds.com.au/pages/child-safety>

## Feedback?

We would love to know how you went with your installation...

Please write a review on our website at...

[www.venetablinds.com.au](http://www.venetablinds.com.au)