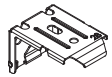
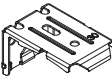

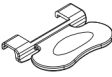


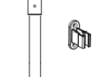



Required Tools



Included Hardware

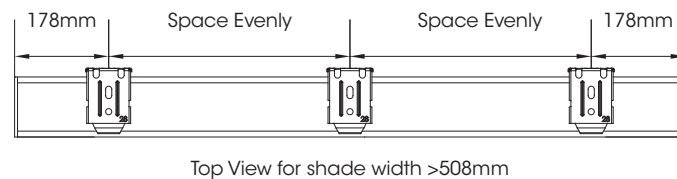
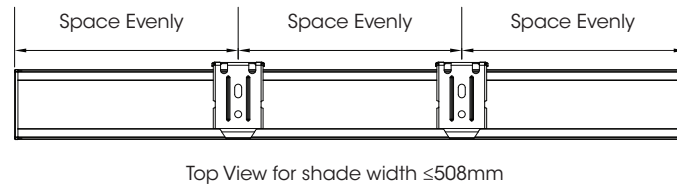
The hardware can be found in the end of every box.

-  Installation Bracket
-  25mm Single (Cordless Bottom Up only)
-  45mm Single 45mm Double (Cordless Bottom Up)
-  Cordless TDBU, Day&Night
-  Handle
-  Medium & Long Screws for Wood
-  Wall Plugs for Brick or Cement using a 6mm bit (if requested)
-  Extension Pole (if requested)

1 Installation Brackets

Installing inside the window frame...

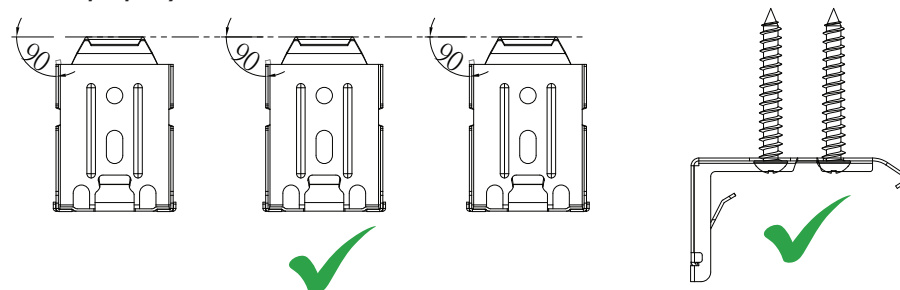
- For shade width $\leq 508\text{mm}$, please evenly space the bracket. For shade width $>508\text{mm}$, measure 178mm from both ends of the head rail as shown below. Mark the bracket location on the mounting surface. Proper alignment of brackets will make installation easier.
- Place brackets in position 5mm back from the front of the window opening and mark where the screws will go.
- We recommend drilling pilot holes for the screws using a 2mm bit.
- Fix the brackets into position using 2 long screws for each bracket into the first two holes closest to the front of the bracket.
- If more brackets are supplied, space them evenly between the first two brackets.



Installing outside the window frame...

- For shade width $\leq 508\text{mm}$, please evenly space the bracket. For shade width $>508\text{mm}$, measure 178mm from both ends of the head rail as shown above. Mark the bracket location on the mounting surface. Proper alignment of brackets will make installation easier.
- We recommend using a spirit level to align brackets if not installing on the architrave.
- We recommend drilling pilot holes for the screws using a 2mm bit.
- Fix the brackets into position using 2 long screws for each bracket.
- If more brackets are supplied, space them evenly between the first two brackets.

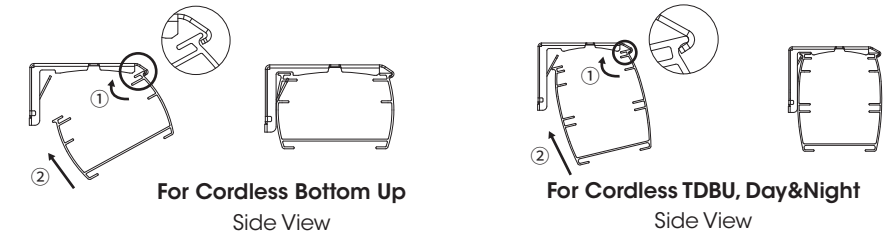
Note: Make sure all brackets line up with each other horizontally, and the screws are all secured properly.



Installation Continued...

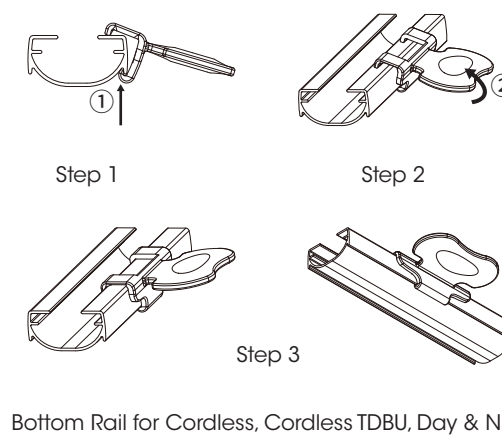
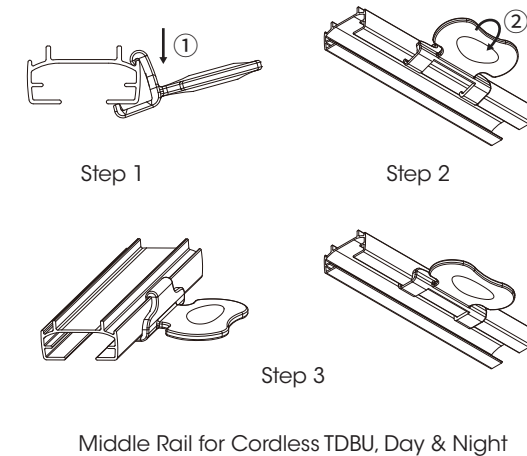
2 Install Blind

- Position the top front lip of the blind under the top front lip of the brackets.
- Push the blind up at the back to click into position as per diagram to the right.



3 Attach Handle

- Step 1. Position the handle at an angle as shown below so that it is hooked to the rail.
 Step 2. Then push it to snap into place, there will be a "Click" sound.
 Step 3. Check if handle's upper and lower hooks firmly hook to the rail.

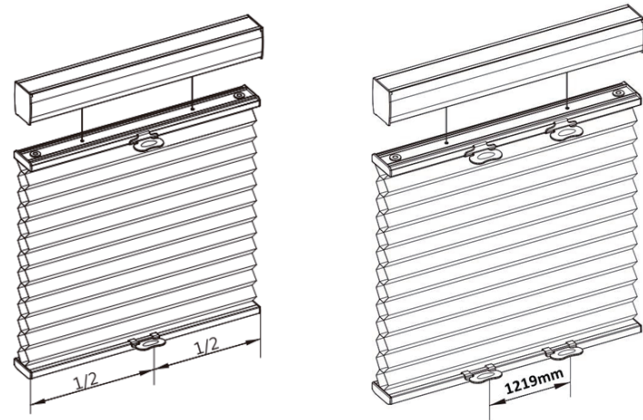


Child Safety

This product has no cord control or chain and is safe for use around young children!

Great Job... Enjoy your new Veneta Blind!

Operating your Blind



When two handles are required, the distance between the 2 handles should be 1219mm as shown above

Bottom Up

- Lower and raise the blind using the handle on the bottom rail.

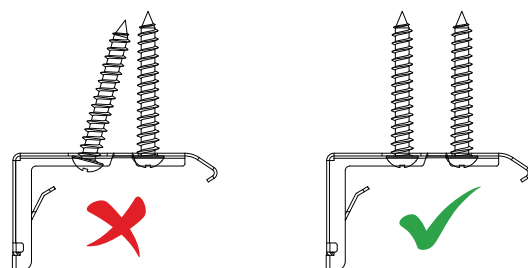
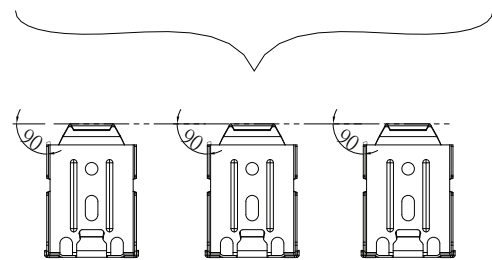
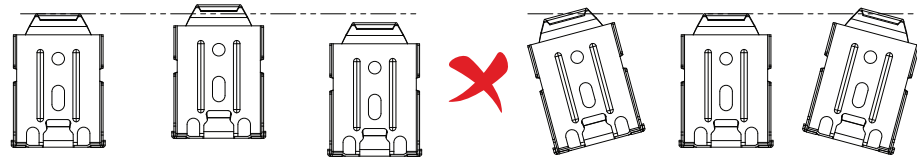
TDBU, Day&Night

- Lower and raise the blind using the handles on the bottom and middle rails.
- Note: You must first lower the bottom rail before lowering the middle rail.
- Note: You must first raise the middle rail before raising the bottom rail.

NOTE: If the shade doesn't lift properly. Please first check whether all brackets line up with each other horizontally, and the screws are all secured properly.

Then gently pull down on the bottom rail to reactivate the cordless mechanism. Repeat if necessary.

For TDBU, Day & Night, pull the midrail down fully to the bottom first and then raise the bottom rail together with midrail up.



Feedback?

We would love to know how you went with your installation...

Please write a review on our website at...

www.venetablinds.com.au

Maintaining your Blind

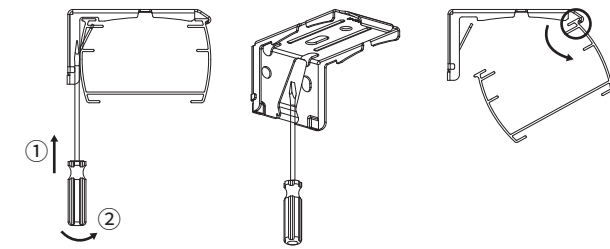
1 Removing your Blind

For Cordless Bottom Up

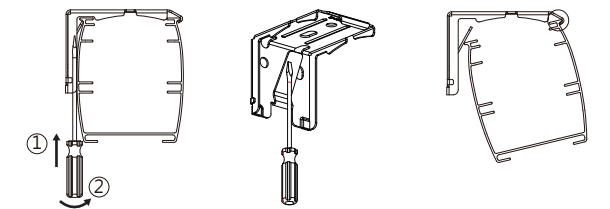
- Position a flat head screw driver between the back of the headrail and bracket.
- Push screw driver upwards.
- Pull back of headrail down to unclip bracket from headrail.
- Repeat for all other brackets.

For Cordless TDBU, Day & Night

- For Cordless TDBU, lower the middle rail.
- For Cordless Day & Night, fully raise the shade.
- Position a flat head screw driver between the back of the headrail and center of the bracket, and push up the flip on the bracket.
- While pushing upwards, gently swing the screwdriver forward to pry the bracket off the head rail.
- Repeat for all other brackets.



For Cordless Bottom Up



For Cordless TDBU, Day&Night

Need HELP?

Call our Customer Service team for assistance

1800 836 382

2 Dusting

- Dust can be removed using a feather duster or vacuum with brush attachment on low suction.

3 Spot Cleaning

- Use a warm damp cloth or a mild detergent for tougher stains.
- Dab the affected area, but do not rub the fabric. Finish with just a warm damp cloth.
- Allow the fabric to dry in the lowered position.

4 Ultrasonic

- If ultrasonically cleaning the blind please specify that a mild solution must be used.
- Note the rails should never be immersed in liquid.