

## FITTING INSTRUCTIONS: Garage Door Insulation (WS018)

### Tools required:

- Tape measure
- A pair of sharp scissors
- A pen / marker
- A ruler.

### Kit includes:

- Insulation roll
- Adhesive thermal tape
- Adhesive pads
- Fitting instructions

# GaraDry™

**Suitable for use on manual, automatic up-and-over, side-hinged, sectional, steel and GRP garage doors.**

**Preparation:** Brush the inside of the garage door and wipe the surface of the garage door with a clean cloth to remove any dust, oil or grease. This is vital to effective fitting.

**PLEASE NOTE: THE TEMPERATURE OF THE DOOR CAN ADVERSELY AFFECT THE ADHESIVE PADS. IF THE ADHESIVE PADS DO NOT STICK WELL, THE DOOR IS TOO COLD.**

### Step One

Using a brush, remove all dust and dirt from the back of the garage door. Wipe clean with a cloth as required.

### Step Two

Starting from the right side of the garage door, measure 714mm from the bottom of the door. Make a mark with a pen on the door/edge or bracing. Repeat this process in the centre and on the left of the garage door.

### Step Three

Place the double-sided adhesive pads in the centre of the markings. Then continue to distribute the adhesive pads evenly (use approximately 15 pads) across the bottom third of the garage door. Press down firmly on the pads to ensure a good bond. This will form the adhesive between the insulation and the garage door. **NB: Do not remove the backing paper from the pads at this point.**

### Step Four

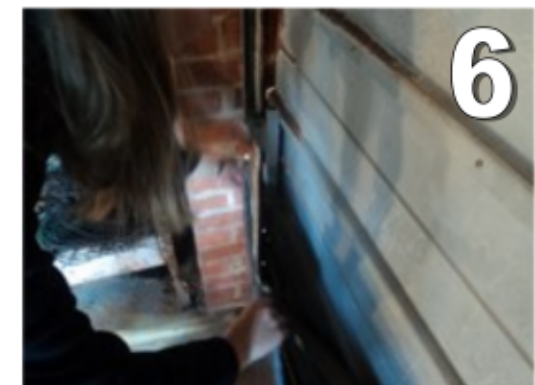
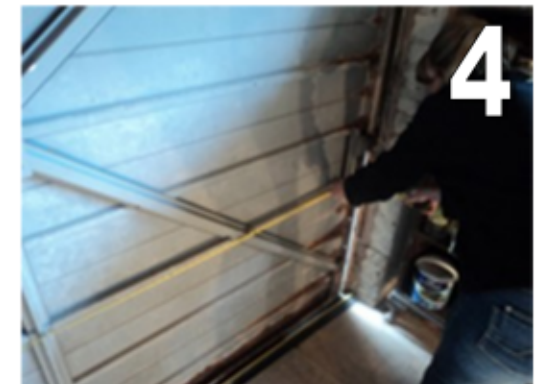
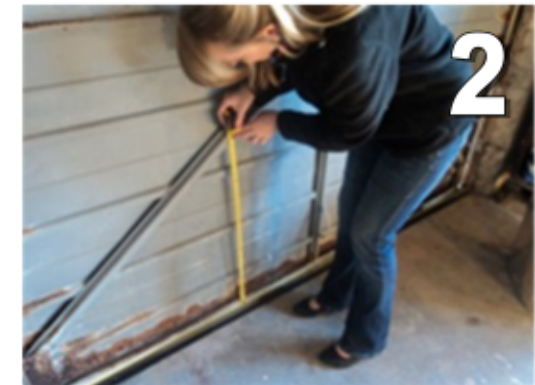
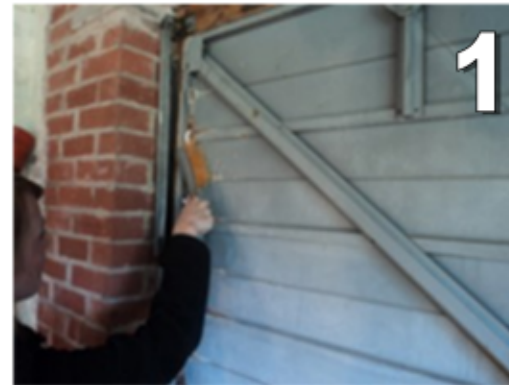
Using a tape measure, measure the width of the door. Note this measurement.

### Step Five

With a pen, mark the previously noted measurement on the insulation material. Then, using the scissors, cut the insulation to size.

### Step Six

Remove the backing paper from the foam pads. Working from one side, secure the insulation material to the pads. Ensure the insulation material is taut when bonding it to the pads.



## FITTING INSTRUCTIONS: Garage door insulation (WS018) CONTINUED...

### Step Seven

If appropriate, remove any fixed cables prior to fitting the insulation.

### Step Eight

Hold the insulation up to the door. For garage doors with protruding latches, draw the shape that is needed to be cut out of the insulation material. With scissors, cut the previously drawn shapes of the latch/cables. Tip: To replicate, fold the insulation material in half, trace the shape on the other side and cut the shape out with the scissors.

### Step Nine

Repeat step 2, 3, 4 and 5 for the remaining two-thirds of the garage door.

### Step Ten

To finish, apply the aluminium foil tape across the two joins on the insulation material.

### Step Eleven

Apply the aluminium tape along the side and top edges of the door. Over-hang half of the tape and then wrap the tape over the edge of the garage door to create an effective seal and a neat finish.

### Step Twelve

Secure latches in place once the laminating material is secured. Apply extra tape around the latches to create a tight seal and neat finish.

*Please see the full range of Weather Stop products for sealing the gaps at the top, side and bottom of your garage door.*

