

WISDOM TEETH AND WHAT TO DO ABOUT THEM

100 copies	@ \$1.05 each:	\$105	<input type="checkbox"/>
200 copies	@ 99 cents each:	\$198	<input type="checkbox"/>
500 copies	@ 95 cents each:	\$475	<input type="checkbox"/>

OROFACIAL PAIN

100 copies	@ 65 cents each:	\$65	<input type="checkbox"/>
200 copies	@ 59 cents each:	\$118	<input type="checkbox"/>

PATIENT RECALL MAILER

TIME FOR A CHECK-UP

100 copies	@ 75 cents each:	\$75	<input type="checkbox"/>
200 copies	@ 69 cents each:	\$138	<input type="checkbox"/>

ORAL HEALTH AND SMOKING

100 copies	@ 65 cents each:	\$65	<input type="checkbox"/>
200 copies	@ 59 cents each:	\$118	<input type="checkbox"/>

TOOTH ENAMEL DEFECTS

100 copies	@ 65 cents each:	\$65	<input type="checkbox"/>
200 copies	@ 59 cents each:	\$118	<input type="checkbox"/>

HOME DENTAL CARE (ENGLISH, 4 PAGES)

100 copies	@ 99 cents each:	\$99	<input type="checkbox"/>
200 copies	@ 95 cents each:	\$190	<input type="checkbox"/>

DENTAL IMPLANTS

100 copies	@ \$1.05 each:	\$105	<input type="checkbox"/>
200 copies	@ 99 cents each:	\$198	<input type="checkbox"/>
500 copies	@ 95 cents each:	\$475	<input type="checkbox"/>

DENTAL EXTRACTIONS

100 copies	@ 75 cents each:	\$75	<input type="checkbox"/>
200 copies	@ 69 cents each:	\$138	<input type="checkbox"/>
500 copies	@ 65 cents each:	\$325	<input type="checkbox"/>

THE FITTING AND CARE OF DENTURES

100 copies	@ \$1.05 each:	\$105	<input type="checkbox"/>
200 copies	@ 99 cents each:	\$198	<input type="checkbox"/>
500 copies	@ 95 cents each:	\$475	<input type="checkbox"/>

ENDODONTIC SURGERY

100 copies	@ 75 cents each:	\$75	<input type="checkbox"/>
200 copies	@ 69 cents each:	\$138	<input type="checkbox"/>

WOMEN'S DENTAL HEALTH

100 copies	@ \$1.05 each:	\$105	<input type="checkbox"/>
200 copies	@ 99 cents each:	\$198	<input type="checkbox"/>

ROOT CANAL TREATMENT

100 copies	@ 75 cents each:	\$75	<input type="checkbox"/>
200 copies	@ 69 cents each:	\$138	<input type="checkbox"/>
500 copies	@ 65 cents each:	\$325	<input type="checkbox"/>

BRUXISM

100 copies	@ 65 cents each:	\$65	<input type="checkbox"/>
200 copies	@ 59 cents each:	\$118	<input type="checkbox"/>
500 copies	@ 57 cents each:	\$285	<input type="checkbox"/>

TREATMENT OF GUM INFECTIONS

100 copies	@ 75 cents each:	\$75	<input type="checkbox"/>
200 copies	@ 69 cents each:	\$138	<input type="checkbox"/>
500 copies	@ 65 cents each:	\$325	<input type="checkbox"/>

FISSURE SEALANTS

100 copies	@ 65 cents each:	\$65	<input type="checkbox"/>
200 copies	@ 59 cents each:	\$118	<input type="checkbox"/>
500 copies	@ 57 cents each:	\$285	<input type="checkbox"/>

CRACKED TOOTH SYNDROME

100 copies	@ 65 cents each:	\$65	<input type="checkbox"/>
200 copies	@ 59 cents each:	\$118	<input type="checkbox"/>
500 copies	@ 57 cents each:	\$285	<input type="checkbox"/>

ORTHODONTICS

100 copies	@ \$1.05 each:	\$105	<input type="checkbox"/>
200 copies	@ 99 cents each:	\$198	<input type="checkbox"/>
500 copies	@ 95 cents each:	\$475	<input type="checkbox"/>

DENTAL X-RAY EXAMINATIONS

100 copies	@ 65 cents each:	\$65	<input type="checkbox"/>
200 copies	@ 59 cents each:	\$118	<input type="checkbox"/>

CONSCIOUS SEDATION IN THE DENTAL SURGERY

100 copies	@ 75 cents each:	\$75	<input type="checkbox"/>
200 copies	@ 69 cents each:	\$138	<input type="checkbox"/>

DENTAL EROSION

100 copies	@ 65 cents each:	\$65	<input type="checkbox"/>
200 copies	@ 59 cents each:	\$118	<input type="checkbox"/>

AMALGAM FILLINGS

100 copies	@ 65 cents each:	\$65	<input type="checkbox"/>
200 copies	@ 59 cents each:	\$118	<input type="checkbox"/>

TOOTH WHITENING

100 copies	@ 65 cents each:	\$65	<input type="checkbox"/>
200 copies	@ 59 cents each:	\$118	<input type="checkbox"/>

ORAL APPLIANCE THERAPY

100 copies	@ 65 cents each:	\$65	<input type="checkbox"/>
200 copies	@ 59 cents each:	\$118	<input type="checkbox"/>

CROWNS AND BRIDGES

100 copies	@ 75 cents each:	\$75	<input type="checkbox"/>
200 copies	@ 69 cents each:	\$138	<input type="checkbox"/>
500 copies	@ 65 cents each:	\$325	<input type="checkbox"/>

PREVENTION OF HEART INFECTION

FOLLOWING DENTAL TREATMENT

100 copies	@ 75 cents each:	\$75	<input type="checkbox"/>
200 copies	@ 69 cents each:	\$138	<input type="checkbox"/>

VENEERS, BONDING, BLEACHING & COMPOSITES

100 copies	@ \$1.05 each:	\$105	<input type="checkbox"/>
200 copies	@ 99 cents each:	\$198	<input type="checkbox"/>
500 copies	@ 95 cents each:	\$475	<input type="checkbox"/>

DENTAL CARE FOR BABIES

AND YOUNG CHILDREN

100 copies	@ \$1.05 each:	\$105	<input type="checkbox"/>
200 copies	@ 99 cents each:	\$198	<input type="checkbox"/>

ORAL HEALTH AND BISPHOSPHONATES MEDICATION

100 copies	@ 75 cents each:	\$75	<input type="checkbox"/>
200 copies	@ 69 cents each:	\$138	<input type="checkbox"/>

DISORDERS OF THE JAW JOINT

100 copies	@ 65 cents each:	\$65	<input type="checkbox"/>
200 copies	@ 59 cents each:	\$118	<input type="checkbox"/>
500 copies	@ 57 cents each:	\$285	<input type="checkbox"/>

INFECTION CONTROL IN THE DENTAL PRACTICE

100 copies	@ 65 cents each:	\$65	<input type="checkbox"/>
200 copies	@ 59 cents each:	\$118	<input type="checkbox"/>

HOME DENTAL CARE AND ORAL HYGIENE

(TICK THE BOXES OF LANGUAGES YOU REQUIRE)

ITALIAN	<input type="checkbox"/>	TURKISH	<input type="checkbox"/>
100 copies	@ 60 cents each:	\$60	<input type="checkbox"/>
200 copies	@ 55 cents each:	\$110	<input type="checkbox"/>

PAMPHLET HOLDERS (CLEAR ACRYLIC)

♦ Wall mounted

A4, single pocket, \$16 per unit
Number of units required:

♦ Free standing

A4, single pocket, \$19 per unit
Number of units required:

Sharps and Needlestick Injury Poster

Emergency steps for health professionals

Third edition updated and reviewed by expert

panel • 420x600mm • in full colour • laminated

\$29 each • Number of posters required:

Please return this form by facsimile to: **+61 3 9888 6465**
OR email: **orders@mitec.com.au**
OR order online: **www.mitec.com.au**
OR telephone orders: **+61 3 9888 6262**

OR post to: **ADA PATIENT EDUCATION**
MI-TEC MEDICAL PUBLISHING
P.O. Box 24
CAMBERWELL, VIC, 3124

JUNE 2019 TELEPHONE ORDERS +61 3 9888 6262 PRICES DO NOT INCLUDE 10% GST. GST APPLIES TO ORDERS WITHIN AUSTRALIA ONLY. PRICES MAY CHANGE OVER TIME. POSTAGE AND HANDLING ARE CHARGED AS AN AT-COST DISBURSEMENT. MI-TEC MEDIA PTY LTD A.C.N. 053 106 497 A.B.N. 65 053 106 497

If you have a practice stamp, please make an imprint below.

PLEASE PRINT CLEARLY

Name: DR..... Bill to:

Post Office Box or Street Address:

City/Town:..... State:..... Postcode:

Phone:..... Fax:.....

Please add your → 1.
email addresses 2.

All email addresses and customer details are confidential.

Pay now by credit card, or we can invoice with the shipment.
(If paying by cheque, please pay on receipt of invoice.)

Card number:

Name on card: Expiry date:

Signature: CVV:

Please tick

- ☐ Mastercard
- ☐ Visa
- ☐ American Express
- ☐ Diners Club

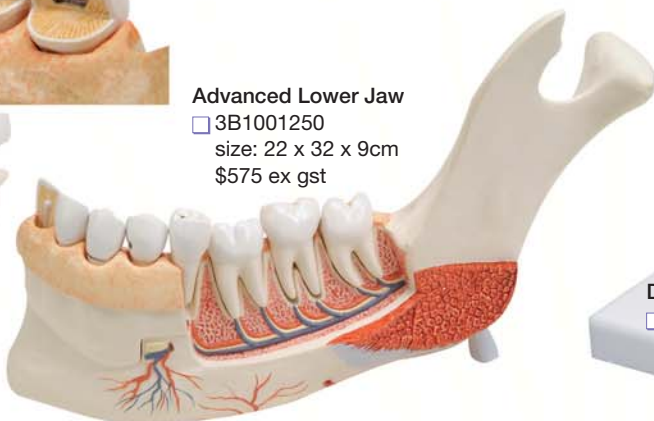
No
Card
Surcharge

ANATOMICAL MODELS



Advanced Lower Jaw

□ 3B1001250
size: 22 x 32 x 9cm
\$575 ex gst



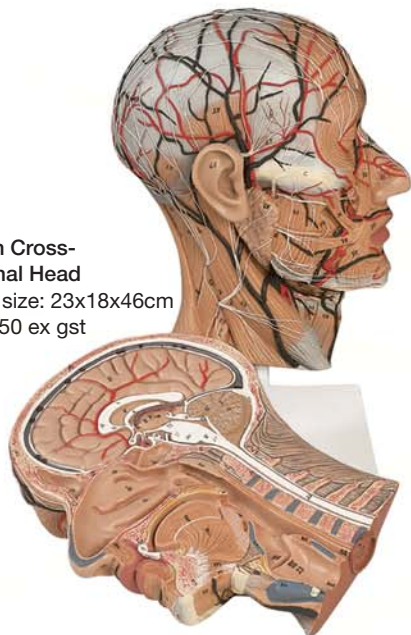
Dental Disease

□ 3B1000016 size: 25.5 x 18.5 x 18cm
\$553 ex gst



Human Cross-sectional Head

□ C14 size: 23x18x46cm
\$1,050 ex gst



Diseased Teeth and Gums

□ G286 size: 14 x 15 x 15cm
\$110 ex gst



Lower Twin-root Molar

□ 3B1000243
size: 29cm
\$273 ex gst

Upper Triple-root Molar

□ 3B1017580
size: 29cm
\$312 ex gst



Clear Human Jaw

□ 2861
size: 7x6x6cm
\$165 ex gst



Order form →

Flossing & Brushing Model

□ W3655 size: 9 x 10cm
\$195 ex gst



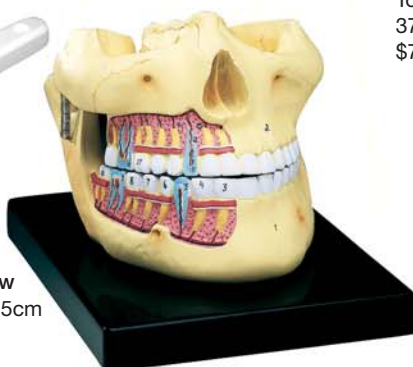
Giant Tooth Brushing Model

□ TH01 size: 15cm from molar to molar
Toothbrush 37cm long
\$71 ex gst



Upper and Lower Jaw

□ JS6519 size: 20x25cm
\$148 ex gst



TMJ Skull

□ A24 size: 14x20x15cm
\$390 ex gst

